

# Table of Contents

<b>Introduction</b>	<b>3</b>
Project Goals	3
ACME-1 Overview	3
<b>Project Scope and Objectives</b>	<b>3</b>
Scope	4
Objectives	4
<b>Technical Approach and Architecture</b>	<b>5</b>
AWS Amplify Architecture	5
Frontend Development	6
Backend Development	6
Third-Party Integrations	6
Scalability and Performance	6
<b>Development Roadmap and Timeline</b>	<b>7</b>
Project Roadmap	7
Development Phases	7
Milestones and Deliverables	7
Progress Tracking and Reporting	8
<b>Cost Estimation and Pricing</b>	<b>8</b>
Cost Breakdown	9
Detailed Cost Allocation	9
Optional Services	10
<b>Security and Compliance</b>	<b>10</b>
Security Measures	10
Data Protection	11
Compliance Standards	11
<b>Team and Expertise</b>	<b>11</b>
Key Team Members	11
Relevant Experience	11
<b>Deployment and DevOps Strategy</b>	<b>12</b>
Continuous Integration and Delivery	12
Post-Deployment Support	12
<b>Portfolio and Case Studies</b>	<b>13</b>
Similar Projects and Outcomes	13



Key Lessons and Best Practices .....	13
<b>Conclusion and Next Steps</b> .....	<b>13</b>
Project Initiation .....	13
Immediate Feedback .....	14



# Introduction

Docupal Demo, LLC presents this proposal to Acme, Inc (ACME-1) for custom development services utilizing AWS Amplify. This initiative aims to modernize ACME-1's document management processes, enhance security, and reduce operational costs. Our solution will provide a scalable and secure platform designed to efficiently manage and distribute documents, thereby improving user engagement through a modern and intuitive interface.

## Project Goals

The primary objectives of this project include:

- Developing a centralized document repository.
- Streamlining document workflows.
- Mitigating security risks associated with current document sharing practices.
- Improving collaboration among ACME-1's employees, clients, and partners.

## ACME-1 Overview

ACME-1, located in Wilsonville, Oregon, requires a robust solution to address inefficiencies in their current document handling procedures. This project presents an opportunity to transform their operations, enhance security protocols, and foster improved collaboration among their stakeholders. This platform will serve employees, clients, and partners, providing efficient access, sharing, and management of documents.

# Project Scope and Objectives

This document outlines the scope and objectives for the custom AWS Amplify development project for ACME-1. The project aims to deliver a robust document management system tailored to ACME-1's specific needs.

## Scope

The project encompasses the development of a document management system with the following key features:



- **User Authentication and Authorization:** Secure user login and role-based permissions to protect sensitive documents.
- **Document Uploading and Storage:** Functionality for uploading various document formats and securely storing them within AWS.
- **Document Search and Indexing:** Efficient search capabilities to quickly locate documents based on keywords and metadata.
- **Version Control:** Tracking and managing different versions of documents to maintain an audit trail.
- **Collaboration Features:** Tools for users to collaborate on documents through comments and annotations.
- **Role-Based Access Control:** Define and enforce access permissions based on user roles within ACME-1.
- **Integration with Existing Systems:** Seamless integration with ACME-1's current IT infrastructure.

The following items are explicitly excluded from the scope of this project:

- Migration of existing documents from legacy systems.
- OCR (Optical Character Recognition) functionality.
- Advanced analytics and reporting capabilities.

## Objectives

The successful completion of this project will be measured against the following objectives:

- **Increased User Adoption:** Achieve significant user engagement, measured by a target increase in monthly active users of the new system.
- **Reduced Document Processing Time:** Streamline document workflows to reduce the average time required to complete tasks.
- **Improved Security:** Enhance document security and minimize vulnerabilities, measured by a reduction in the number of security incidents.
- **Cost Savings:** Optimize storage and operational expenses related to document management.



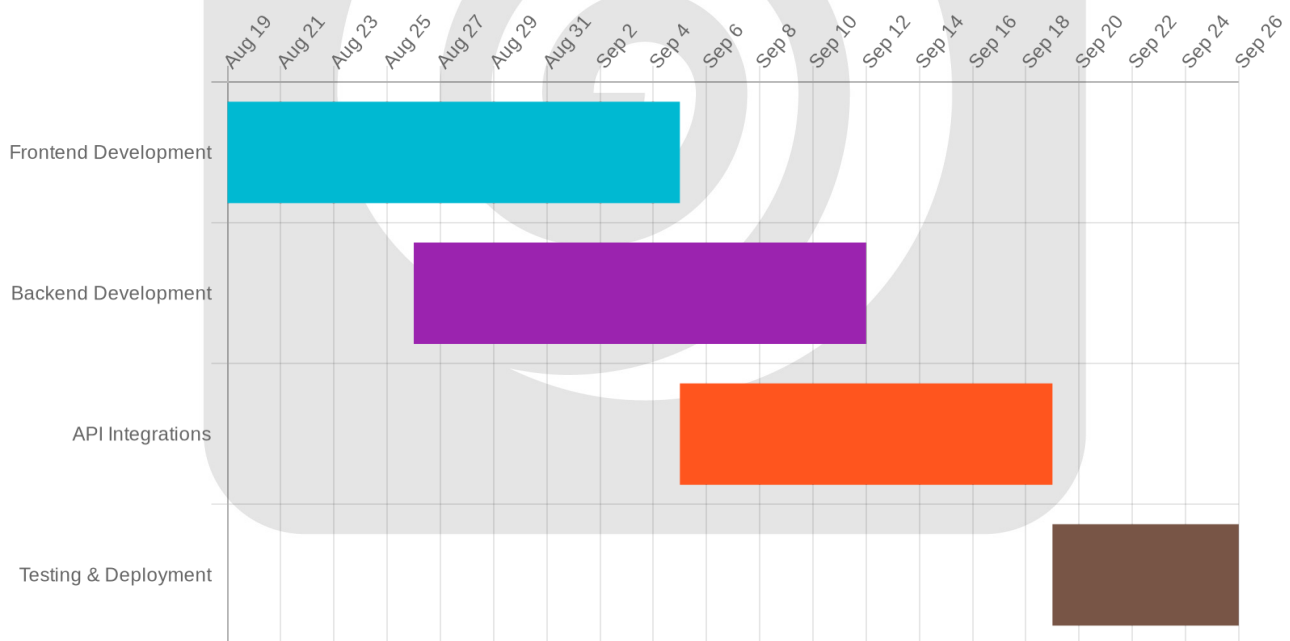
# Technical Approach and Architecture

Our approach centers on leveraging AWS Amplify to build a scalable and robust solution for ACME-1. This involves a React-based frontend, a serverless backend, and integrations with existing systems.

## AWS Amplify Architecture

We will use a suite of AWS Amplify services:

- **Amplify Hosting:** For hosting the React application with continuous deployment.
- **Amplify Authentication:** To manage user authentication and authorization.
- **Amplify Storage (S3):** For storing files and documents securely.
- **Amplify Functions (Lambda):** To execute server-side logic in a serverless environment.
- **Amplify DataStore (GraphQL API):** To create a data layer with offline capabilities and real-time updates.



## Frontend Development

The frontend will be a React-based single-page application (SPA). React was chosen for its component-based architecture, virtual DOM, and large community support. This allows for a modular and maintainable codebase, optimized rendering performance, and access to a wide range of libraries and tools.

## Backend Development

The backend will follow a serverless architecture, utilizing AWS Lambda functions. This approach offers scalability, cost-efficiency, and reduced operational overhead. We will define the data models and relationships using GraphQL, and Amplify DataStore will automatically provision the necessary AWS resources, including DynamoDB tables.

## Third-Party Integrations

We will integrate with ACME-1's existing CRM and ERP systems using REST APIs. Secure and reliable data exchange will be ensured. We will also integrate with third-party document signing services like DocuSign or Adobe Sign, enabling users to electronically sign documents within the application.

## Scalability and Performance

To ensure optimal performance and scalability, we will implement the following strategies:

- **Auto-scaling AWS Lambda functions:** Lambda functions will automatically scale based on demand.
- **CDN (Content Delivery Network):** Static assets will be served via a CDN for faster loading times.
- **Database optimization:** DynamoDB tables will be optimized for query performance.
- **Caching strategies:** Caching will be implemented at various layers to reduce database load and improve response times.



# Development Roadmap and Timeline

## Project Roadmap

Docupal Demo, LLC will follow a structured approach to deliver ACME-1's AWS Amplify custom development project. Our roadmap includes five key phases, each with specific milestones and deliverables. We will closely track progress and provide regular updates.

### Development Phases

- 1. Project Setup and Requirements Gathering:** This initial phase focuses on defining the project scope and gathering detailed requirements.
- 2. Frontend Development:** We will develop the user interface and user experience based on the approved requirements.
- 3. Backend Development:** This phase involves building the server-side logic and database integrations.
- 4. Integration and Testing:** We will integrate the frontend and backend components and conduct thorough testing to ensure quality.
- 5. Deployment and Training:** The final phase includes deploying the application to the production environment and providing user training.

### Milestones and Deliverables

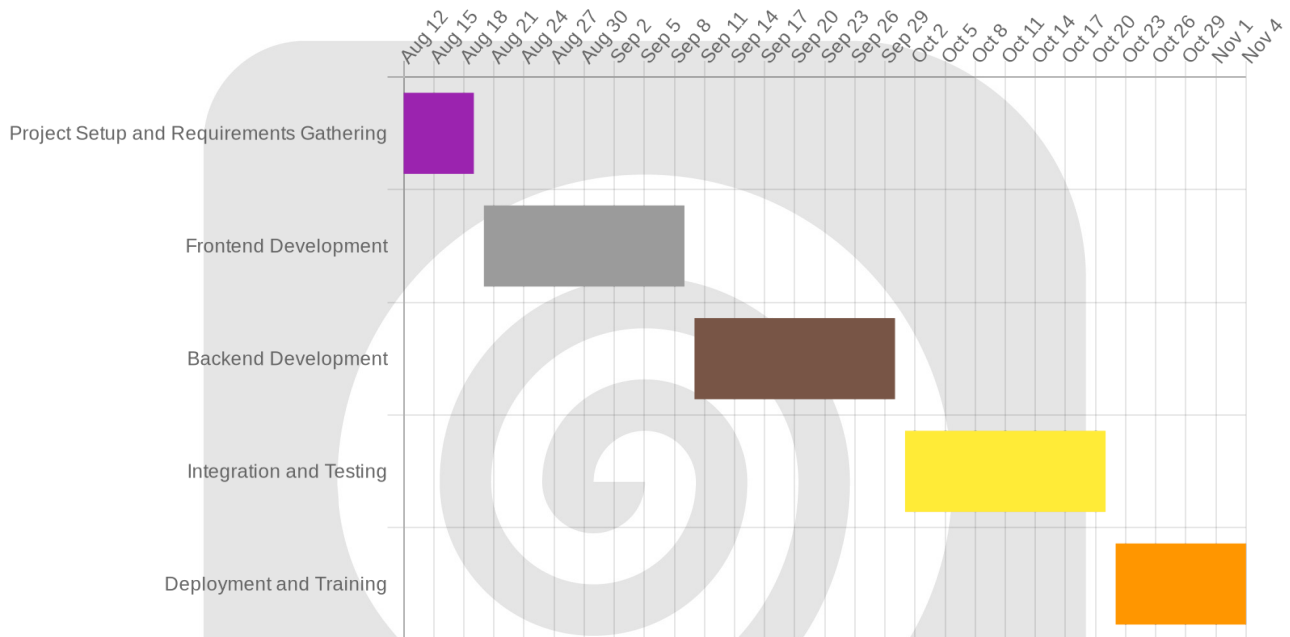
Milestone	Deliverable	Scheduled Date
Completion of project setup and requirements	Requirements document	2025-08-19
Completion of frontend development	Frontend codebase	2025-09-09
Completion of backend development	Backend codebase	2025-09-30
Completion of integration and testing	Test reports	2025-10-21
Successful deployment to production	Deployment plan, User Training Materials	2025-11-04





## Progress Tracking and Reporting

Docupal Demo, LLC will maintain transparency throughout the development process. Our team will conduct daily stand-up meetings to address any immediate concerns and keep the project on track. We will also provide weekly progress reports summarizing accomplishments, challenges, and upcoming activities. ACME-1 will have access to a project management dashboard displaying key performance indicators (KPIs), allowing real-time monitoring of progress against the established timeline.



## Cost Estimation and Pricing

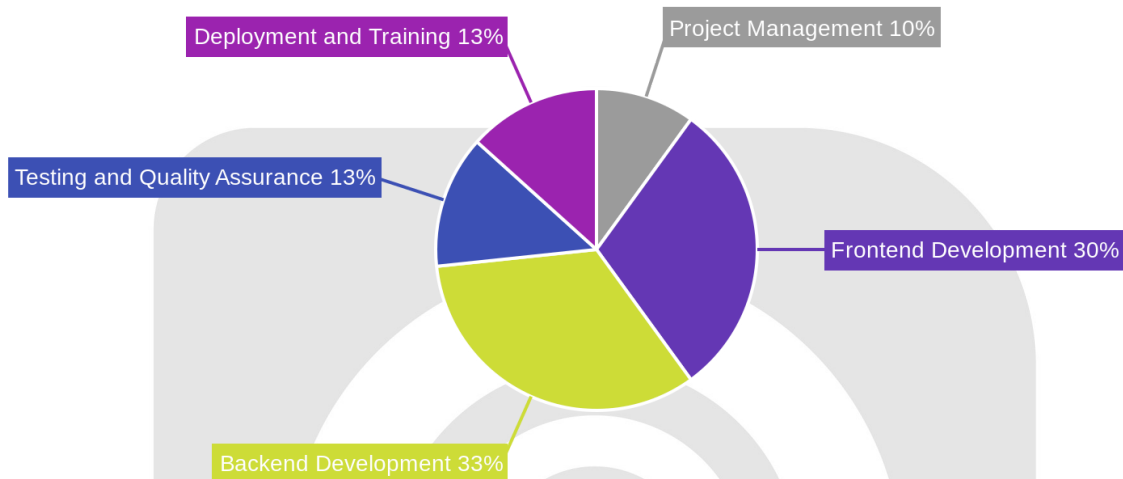
Our cost estimation for the AWS Amplify custom development project totals \$150,000. This figure represents a comprehensive estimate to deliver a high-quality, scalable, and maintainable solution tailored to ACME-1's specific needs.

### Cost Breakdown

The total project cost is divided into key areas. Each area reflects the effort and resources required for successful completion.



- **Project Management:** \$15,000
- **Frontend Development:** \$45,000
- **Backend Development:** \$50,000
- **Testing and Quality Assurance:** \$20,000
- **Deployment and Training:** \$20,000



## Detailed Cost Allocation

**Project Management (\$15,000):** This covers planning, coordination, communication, and risk management throughout the project lifecycle. It ensures the project stays on track and within budget.

**Frontend Development (\$45,000):** This involves building the user interface and ensuring a seamless user experience. It includes developing responsive designs and integrating frontend components with the backend.

**Backend Development (\$50,000):** This focuses on server-side logic, database design, and API development. It ensures the application is secure, scalable, and performs efficiently.

**Testing and Quality Assurance (\$20,000):** This includes rigorous testing to identify and fix bugs. It also covers performance testing and security audits to ensure a stable and reliable application.

**Deployment and Training (\$20,000):** This covers deploying the application to the AWS environment. It includes training ACME-1's team to manage and maintain the application.

## Optional Services

Additional services can be included to enhance the application's functionality. These services will impact the final project cost.

Service	Cost	Description
Migration of Existing Documents	\$10,000	Transferring documents from legacy systems to the new AWS Amplify application.
OCR Functionality	\$15,000	Implementing Optical Character Recognition to extract text from images and documents.
Advanced Analytics and Reporting	\$10,000	Providing detailed insights into application usage and performance through custom dashboards and reports.

## Security and Compliance

Docupal Demo, LLC prioritizes the security and compliance of all solutions developed for ACME-1. We will implement robust security measures throughout the AWS Amplify custom development project.

### Security Measures

We will adhere to AWS security best practices. This includes using IAM roles and policies to manage access permissions. Data encryption will be used both at rest and in transit to protect sensitive information. Regular security audits and vulnerability scanning will identify and address potential weaknesses.

### Data Protection

Data protection is paramount. We will encrypt data, enforce strict access controls, and perform regular backups. Our practices align with relevant data privacy regulations to ensure compliance.



## Compliance Standards

This project will comply with GDPR and HIPAA standards. Our development process incorporates these requirements to protect personal and health information. We will provide documentation and support to demonstrate compliance.

## Team and Expertise

Docupal Demo, LLC will provide a dedicated team of experienced professionals to ensure the success of your AWS Amplify custom development project. Our team's structure promotes clear roles, efficient communication, and streamlined decision-making throughout the project lifecycle. We have extensive experience designing, developing, and deploying cloud-based solutions.

### Key Team Members

- **Project Manager:** John Smith
- **Frontend Developer:** Jane Doe
- **Backend Developer:** Richard Roe
- **Security Architect:** Alice Brown

### Relevant Experience

Our team possesses the skills and experience necessary to deliver a high-quality solution that meets your specific needs.

- **John Smith** brings over 10 years of project management experience, including a proven track record of successfully delivering similar projects on time and within budget.
- **Jane Doe** has 5+ years of experience in frontend development, specializing in React.
- **Richard Roe** offers 7+ years of backend development expertise, with a focus on AWS Lambda and GraphQL.
- **Alice Brown** has 8+ years of experience in security architecture and compliance, ensuring the security of your application and data.



# Deployment and DevOps Strategy

We will use AWS Amplify Console for seamless deployment. Our workflow includes automated deployments triggered directly from your Git repository. This ensures that every code change is efficiently built, tested, and deployed to the appropriate environment.

## Continuous Integration and Delivery

Our CI/CD pipeline incorporates automated testing at each stage. This includes unit tests, integration tests, and end-to-end tests. These tests guarantee code quality and reliability. We will create continuous integration pipelines to automate the build, test, and deployment processes. Automated deployment scripts will further streamline releases.

### CI/CD Flow Diagram:

```
graph LR
  A[Code Commit] --> B[Build]
  B --> C[Tests]
  C -- Pass --> D[Deploy to Staging]
  C -- Fail --> E[Notify Developers]
  D --> F[User Acceptance Testing]
  F -- Pass --> G[Deploy to Production]
  F -- Fail --> E
  G --> H[Monitoring]
  E --> A
```

## Post-Deployment Support

We provide ongoing monitoring of the application's performance and stability. This includes bug fixes and feature enhancements as needed. We will define clear service level agreements (SLAs) to ensure responsiveness and reliability. Our team will address any issues promptly and efficiently.

# Portfolio and Case Studies

DocuPal Demo, LLC has a proven track record of successfully delivering custom AWS Amplify solutions. Our experience includes projects for companies such as Beta Corp and Gamma Inc., demonstrating our expertise in this technology.



## Similar Projects and Outcomes

Our past projects have focused on enhancing efficiency and improving security for our clients. These projects leveraged the power of AWS Amplify to create scalable and maintainable web and mobile applications. Clients have reported positive feedback, highlighting the improved performance and user experience of the solutions we delivered.

## Key Lessons and Best Practices

Throughout our project history, we've learned the importance of clear communication with clients, ensuring that project goals are aligned and expectations are met. We also emphasize thorough testing to identify and resolve any issues before deployment. Adherence to security best practices is a cornerstone of our development process, safeguarding client data and ensuring the integrity of their applications.

## Conclusion and Next Steps

Docupal Demo, LLC is prepared to deliver a custom AWS Amplify solution tailored to ACME-1's document management needs. We are confident in our ability to execute this project successfully, on schedule, and within the proposed budget.

## Project Initiation

To move forward, we request the following actions from ACME-1:

- Review and sign the proposal document.
- Grant Docupal Demo, LLC access to pertinent systems and stakeholders.
- Schedule a kickoff meeting to align on project specifics.

## Immediate Feedback

We kindly request ACME-1's approval of this proposal. Confirmation of the project scope will also allow us to begin the work.

