

Table of Contents

Executive Summary	3
Key Benefits	3
Recommendations	3
Introduction and Background	3
Current Vercel Environment at ACME-1	4
Drivers for Upgrade	4
Business and Technical Justification	4
Market and Technology Analysis	4
Market Trends	5
Competitor Platforms	5
Emerging Technologies	5
Proposed Features and Enhancements	6
Enhanced Monitoring Dashboard	6
Improved CI/CD Integration	6
Performance and Scalability Enhancements	7
User Experience Improvements	7
Security and Compliance Considerations	8
Security Enhancements	8
Compliance Maintenance	8
Cost Analysis and Budgeting	8
Cost Components	8
Expected ROI	9
Budget Considerations	9
Implementation Plan and Timeline	9
Upgrade Phases	9
Responsibilities	10
Timeline and Milestones	10
Integration and Compatibility	11
Maintaining Integrations	11
Migration and Integration Risks	11
Impact Assessment and Risk Management	11
Potential Risks	11
Mitigation Strategies	12



Impact on Users and Infrastructure	12
Customer Feedback and Adoption Strategy	13
Addressing Customer Needs	13
Adoption and Support Plan	13
Tracking Adoption Metrics	14
Conclusion and Next Steps	14
Required Approvals and Resources	14
Immediate Action Plan	14



Executive Summary

This document presents Docupal Demo, LLC's proposal to upgrade Acme, Inc's Vercel platform. The primary goals are to boost website performance, strengthen security measures, and unlock access to new functionalities. The upgrade focuses on enhancing the build process, the Edge Network, and serverless functions.

Key Benefits

This Vercel upgrade offers several significant advantages for ACME-1:

- **Faster Load Times:** Optimizations to the Edge Network and build process will lead to quicker page loading, improving user engagement.
- **Enhanced Security:** The latest Vercel updates include advanced security features, protecting against emerging threats.
- **Improved Developer Experience:** A streamlined development workflow and access to new tools will increase developer productivity and satisfaction.

Recommendations

We recommend a full upgrade to the newest Vercel platform version. This will ensure ACME-1 benefits from the latest performance improvements, security patches, and feature enhancements. This proposal details the technical aspects, costs, timelines, and responsibilities associated with this upgrade. We have also outlined potential risks and mitigation strategies to ensure a smooth transition.

Introduction and Background

Docupal Demo, LLC is submitting this proposal to Acme, Inc (ACME-1) to outline the recommended update and upgrade path for your existing Vercel deployment. This document details the current situation, the rationale for the proposed changes, and the anticipated benefits for ACME-1.



Current Vercel Environment at ACME-1

ACME-1 currently utilizes Vercel to host and deploy its web applications. Vercel's platform provides continuous integration, continuous deployment, and serverless functions. It allows ACME-1 to rapidly deploy and scale applications. However, the current implementation faces challenges that necessitate an upgrade.

Drivers for Upgrade

Several key factors drive the need for this Vercel update and upgrade:

- **Security Vulnerabilities:** The existing Vercel setup contains known security vulnerabilities. Addressing these is critical to protect ACME-1's data and users.
- **Scalability Limitations:** Current infrastructure struggles to support growing traffic volumes. The upgrade will enhance scalability to meet increasing demands.
- **New Feature Requirements:** ACME-1's development roadmap includes new features. These features require updated Vercel capabilities.

Business and Technical Justification

This upgrade directly supports ACME-1's business goals. The increased scalability ensures a seamless user experience. Mitigation of security vulnerabilities protects ACME-1's reputation and minimizes risk. The upgrade also enables the implementation of new features. It keeps ACME-1 competitive and innovative. The proposal balances costs, risks, and the need for improved performance, security, and user experience.

Market and Technology Analysis

The market for cloud-based web development platforms is rapidly expanding. ACME-1's decision to consider a Vercel upgrade aligns with industry trends favoring enhanced performance, security, and improved developer experience. This analysis explores these trends, examines competitor platforms, and highlights relevant emerging technologies.



Market Trends

The demand for faster, more secure, and scalable web applications is growing. Businesses need to deliver seamless user experiences across all devices. Vercel addresses these needs by offering a platform optimized for speed and reliability. The JAMstack architecture, which Vercel champions, is gaining traction as businesses seek to improve website performance and reduce infrastructure costs.

Values are in billions of USD.

The market trend shows consistent growth in cloud-based web development platforms, with projections indicating continued expansion through 2025.

Competitor Platforms

Several platforms compete with Vercel. These include Netlify, AWS Amplify, and Firebase. Netlify is a strong competitor with a similar focus on JAMstack architecture. AWS Amplify provides a more comprehensive suite of tools within the AWS ecosystem. Firebase, backed by Google, offers a range of services, including hosting and serverless functions. Vercel differentiates itself through its focus on developer experience, performance optimization, and seamless integration with modern frontend frameworks like React, Next.js, and Vue.js. ACME-1's current reliance on Next.js makes Vercel a particularly suitable choice.

Emerging Technologies

Several emerging technologies influence the evolution of web development platforms:

- **Serverless Functions:** These allow developers to run backend code without managing servers. Vercel's serverless functions offer scalability and cost-efficiency.
- **Edge Computing:** This brings computation closer to the user. It reduces latency and improves performance. Vercel's edge network is a key differentiator.
- **WebAssembly:** This enables near-native performance in the browser. It opens new possibilities for complex web applications.



- **GraphQL:** This query language for APIs allows clients to request specific data. It improves efficiency and reduces over-fetching.

Vercel is actively incorporating these technologies to enhance its platform. By upgrading to the latest Vercel version, ACME-1 can leverage these advancements to improve its web applications and stay ahead of the competition.

Proposed Features and Enhancements

This section outlines the planned features and enhancements for the Vercel upgrade, detailing improvements to monitoring, CI/CD integration, performance, scalability, and user experience.

Enhanced Monitoring Dashboard

We propose a significantly enhanced monitoring dashboard. This dashboard will offer a more comprehensive view of your application's performance and health. Key improvements include:

- **Real-time Metrics:** The dashboard will display real-time metrics for key performance indicators (KPIs), such as response time, error rates, and resource utilization.
- **Customizable Alerts:** You will be able to configure custom alerts based on specific thresholds, allowing for proactive identification and resolution of potential issues.
- **Improved Visualizations:** Data will be presented through improved visualizations, making it easier to identify trends and patterns.
- **Log Integration:** Direct integration with log management systems will streamline troubleshooting and debugging.

Improved CI/CD Integration

The upgrade will deliver a more streamlined and efficient CI/CD integration process. We aim to provide:

- **Automated Deployments:** Fully automated deployments triggered by code changes, reducing manual intervention and the risk of errors.
- **Rollback Capabilities:** Easy rollback to previous versions in case of issues with a new deployment.



- **Integration with Existing Tools:** Seamless integration with your existing CI/CD tools and workflows.
- **Parallel Builds:** Execute multiple builds in parallel to reduce overall deployment time.

Performance and Scalability Enhancements

The Vercel upgrade will include several key enhancements designed to improve both performance and scalability:

- **Improved Caching Mechanisms:** We will implement more efficient caching strategies to reduce latency and improve response times. This includes leveraging Vercel's edge network for optimal content delivery.
- **Optimized Serverless Function Execution:** We will optimize the execution of serverless functions to reduce cold starts and improve overall performance.
- **Enhanced Resource Allocation:** Dynamic resource allocation will ensure that your application has the resources it needs to handle peak loads.
- **Database Connection Pooling:** Implement database connection pooling to reduce the overhead of establishing new database connections.

User Experience Improvements

The updated Vercel platform will feature a more intuitive interface for content management, aimed at improving the user experience for your team:

- **Simplified Content Editing:** A WYSIWYG (What You See Is What You Get) editor will allow for easier and more intuitive content editing.
- **Drag-and-Drop Interface:** A drag-and-drop interface will simplify the process of organizing and managing content.
- **Improved Media Management:** Enhanced media management capabilities will make it easier to upload, organize, and use images and videos.
- **Version Control:** Content version control will allow you to track changes and revert to previous versions if needed.

Security and Compliance Considerations

This Vercel upgrade focuses on enhancing the security posture and ensuring ongoing compliance with data privacy regulations. The upgrade addresses critical security vulnerabilities, including cross-site scripting (XSS) and SQL injection risks,



to better protect ACME-1's data and users.

Security Enhancements

The upgrade introduces multi-factor authentication (MFA) for enhanced user access security. We are also implementing improved encryption protocols to safeguard data in transit and at rest. These measures will significantly reduce the risk of unauthorized access and data breaches.

Compliance Maintenance

This Vercel upgrade is designed to maintain and improve compliance with key data privacy standards, specifically GDPR and CCPA. The updated features and protocols will help ACME-1 adhere to data processing requirements, user consent protocols, and data security mandates outlined in these regulations. We are committed to ensuring that the upgraded Vercel environment aligns with ACME-1's compliance objectives.

Cost Analysis and Budgeting

The estimated budget for the Vercel upgrade project is \$50,000. This section outlines the cost components, expected return on investment (ROI), and budget considerations for ACME-1. The investment is justified by the anticipated improvements in efficiency and a reduction in operational risks.

Cost Components

The major cost drivers for this upgrade are development time, third-party integrations, and infrastructure expenses. A detailed breakdown is provided below:

- **Development Time:** \$25,000
- **Third-Party Integrations:** \$15,000
- **Infrastructure Costs:** \$10,000

Expected ROI

While a precise ROI calculation is dependent on ACME-1's specific usage patterns, the upgrade is expected to yield significant improvements. These improvements translate into tangible financial benefits, making the upgrade a worthwhile



investment.

Budget Considerations

ACME-1 should allocate the \$50,000 budget to ensure smooth project execution. Contingency funds should also be considered to address unforeseen issues.

Implementation Plan and Timeline

This section details the plan for upgrading ACME-1 to the latest Vercel platform. We will use a phased approach to minimize disruption and ensure a smooth transition. The upgrade begins on 2024-01-15 and is expected to be completed by 2024-03-15.

Upgrade Phases

The upgrade will consist of five key phases:

1. **Planning:** This initial phase involves detailed project scoping, resource allocation, and risk assessment.
2. **Development:** The development team will build and configure the new Vercel environment.
3. **Testing:** Rigorous testing will be performed to validate functionality, performance, and security.
4. **Deployment:** The operations team will deploy the upgraded application to the production environment.
5. **Monitoring:** Post-deployment monitoring will ensure ongoing stability and performance optimization.

Responsibilities

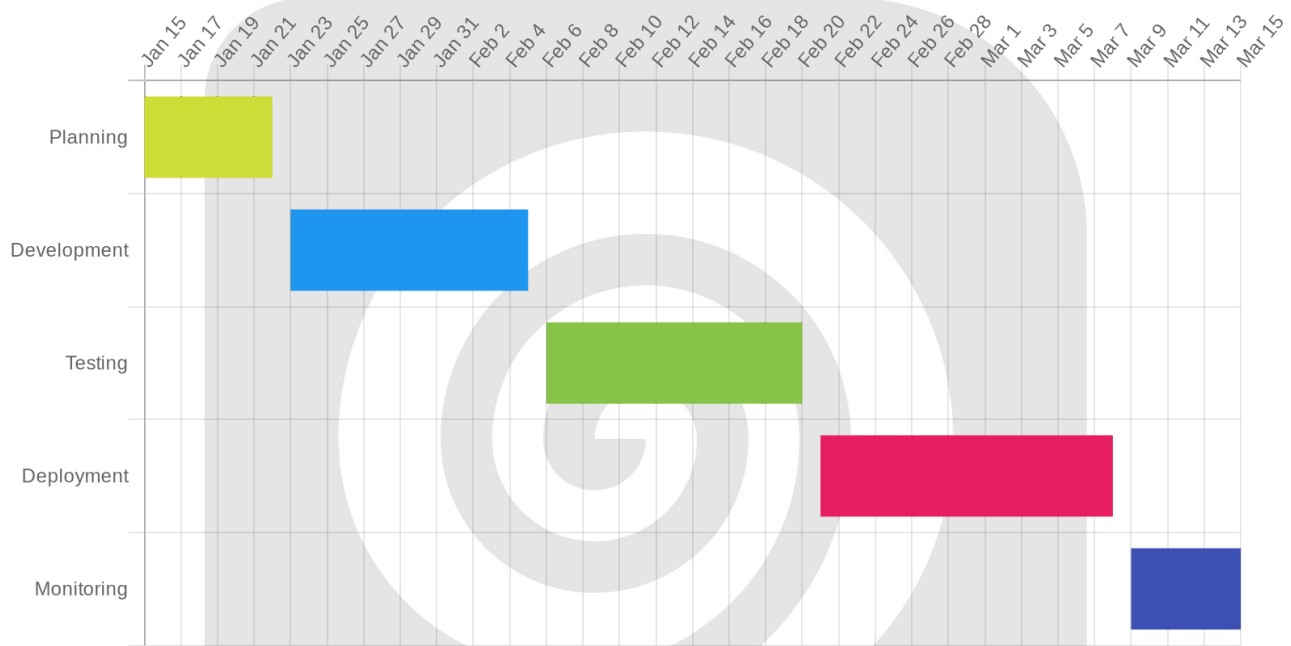
Each phase will be managed by specific teams:

- **Development Team:** Responsible for the development phase, including code migration and configuration.
- **Security Team:** Responsible for security audits, vulnerability assessments, and implementing security best practices during all phases.
- **Operations Team:** Responsible for the deployment phase, including infrastructure setup and application deployment.



Timeline and Milestones

Milestone	Target Date
Planning Complete	2024-01-22
Development Ready	2024-02-05
Testing Complete	2024-02-20
Deployment Complete	2024-03-08
Monitoring Review	2024-03-15



Integration and Compatibility

This Vercel upgrade ensures continued compatibility with Acme Inc's current systems. This includes maintaining full functionality with existing databases. We will also ensure seamless integration with your third-party marketing tools.



Maintaining Integrations

We will use updated APIs and integration libraries to maintain and improve existing integrations. This approach minimizes disruption and maximizes the benefits of the Vercel upgrade. Updated APIs and libraries allow for enhanced data flow and feature sets.

Migration and Integration Risks

Potential risks during migration and integration include data loss, downtime, and integration conflicts. We will address these risks through comprehensive mitigation strategies. These strategies include robust data backups, phased rollouts, and thorough testing. We will closely monitor all integrations during and after the upgrade. This will allow us to quickly address any potential conflicts.

Impact Assessment and Risk Management

The Vercel upgrade carries potential impacts that require careful consideration. We've identified key risks and outlined mitigation plans to minimize disruptions for ACME-1.

Potential Risks

The primary risks associated with this upgrade include:

- **Data Loss:** Although unlikely, data loss is a potential risk during any system migration.
- **System Downtime:** The upgrade process may require temporary system downtime, impacting user access.
- **Unexpected Costs:** Unforeseen issues during the upgrade could lead to additional expenses.

Mitigation Strategies

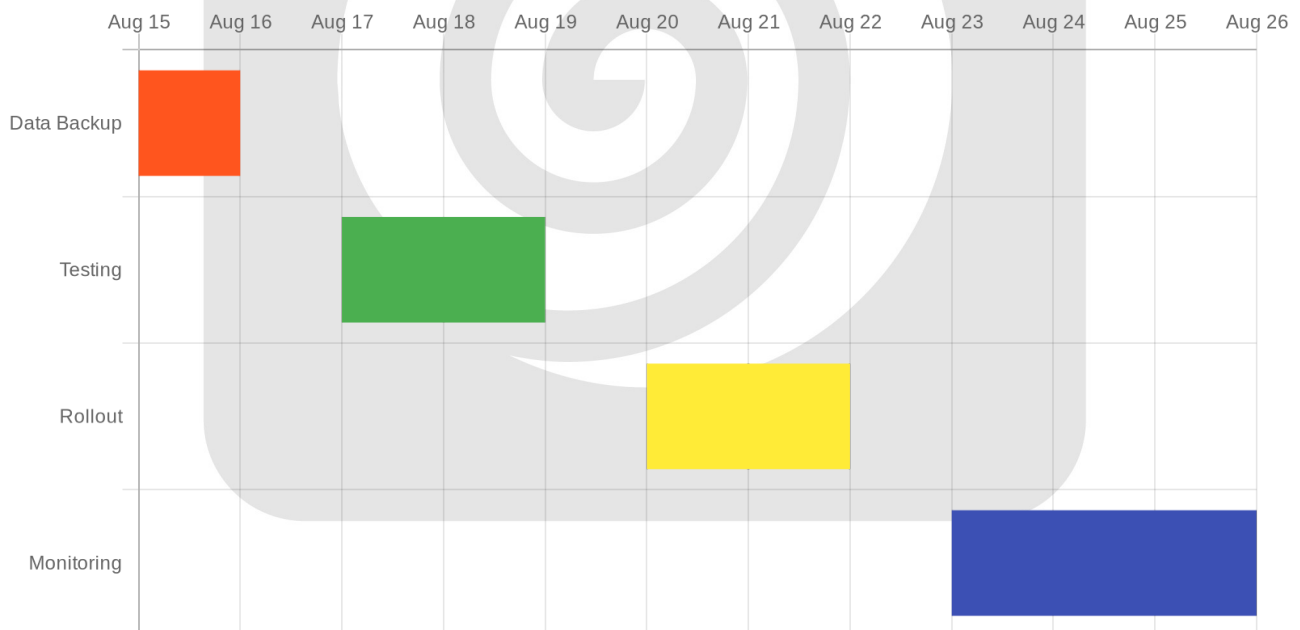
To address these risks, we will implement the following mitigation strategies:



- **Thorough Testing:** Before deployment, the upgraded environment will undergo rigorous testing to identify and resolve potential issues.
- **Data Backups:** Comprehensive data backups will be performed before initiating the upgrade to ensure data recovery in case of unforeseen problems.
- **Phased Rollout:** A phased rollout approach will be adopted, starting with a small group of users, to monitor performance and identify any issues before a full-scale deployment.
- **Contingency Plans:** We have developed rollback plans to quickly revert to the previous system in case of critical failures.
- **24/7 Support:** Our team will provide round-the-clock support during and after the upgrade to address any issues promptly.

Impact on Users and Infrastructure

The upgrade is expected to have a positive impact on users due to improved performance, enhanced security, and a better user experience. However, there may be a brief period of adjustment as users become familiar with the new features. The infrastructure will benefit from the latest Vercel updates, leading to greater stability and scalability.



Customer Feedback and Adoption Strategy

This section outlines how we've incorporated customer feedback into this Vercel upgrade proposal and details our strategy to ensure smooth user adoption.

Addressing Customer Needs

Customer feedback has been instrumental in shaping the scope and priorities of this upgrade. Specifically, we've focused on addressing two key areas:

- **Faster Load Times:** Customers have consistently requested improvements to website loading speed. This Vercel upgrade directly tackles this by leveraging the latest performance optimizations available within the platform.
- **Enhanced Security:** Heightened security is a recurring theme in customer feedback. The upgrade includes the newest security patches and features offered by Vercel, designed to provide a more secure user experience.

Adoption and Support Plan

To promote rapid and effective adoption of the upgraded Vercel platform, we will provide comprehensive support and training resources. These include:

- **Online Documentation:** Detailed documentation covering all aspects of the upgraded platform will be readily available.
- **Video Tutorials:** Step-by-step video tutorials will guide users through key features and functionalities.
- **Dedicated Support Channels:** Users can access dedicated support channels to address any questions or issues they may encounter.

Tracking Adoption Metrics

We will closely monitor key metrics to assess the success of the Vercel upgrade and user adoption. These metrics include:

- **Website Traffic:** Monitoring website traffic to gauge overall usage and engagement.



- **Conversion Rates:** Analyzing conversion rates to determine if the upgrade has positively impacted business outcomes.
- **User Engagement:** Tracking user engagement metrics to understand how users are interacting with the upgraded platform.

Conclusion and Next Steps

This Vercel upgrade promises substantial improvements for ACME-1. We anticipate increased website traffic, better conversion rates, and happier customers post-upgrade. These outcomes directly support ACME-1's business goals.

Required Approvals and Resources

To move forward, we need budget approval, the allocation of your team members, and stakeholder sign-off on this proposal.

Immediate Action Plan

Upon acceptance, we will schedule a kick-off meeting. This meeting will involve all stakeholders and the development team to align on project goals, timelines, and responsibilities. Following the meeting, our team will begin the upgrade process as outlined in the timeline.

