

# Table of Contents

<b>Executive Summary</b>	<b>3</b>
Project Goals and Value	3
Key Deliverables	3
<b>Project Scope and Objectives</b>	<b>4</b>
Project Scope	4
Project Objectives	4
<b>Technical Approach and Architecture</b>	<b>5</b>
Technology Stack	5
Vercel Deployment Strategy	5
Architectural Patterns	6
<b>Project Timeline and Milestones</b>	<b>6</b>
Project Phases	7
Key Milestones and Deliverables	7
Dependencies and Critical Path	7
Visual Timeline	8
<b>Budget and Cost Estimation</b>	<b>8</b>
Cost Breakdown	8
Payment Schedule	9
<b>Team and Roles</b>	<b>9</b>
Project Team	10
Key Personnel	10
Roles and Responsibilities	10
Organizational Chart	11
<b>Case Studies and Portfolio</b>	<b>11</b>
Relevant Experience	11
Project: Streamline	11
<b>Risk Management and Mitigation</b>	<b>11</b>
Technical Risks	12
Project Risks	12
<b>Maintenance and Support</b>	<b>12</b>
Support Levels and Response Times	12
Upgrade and Enhancement Plans	13
<b>Terms and Conditions</b>	<b>13</b>



Contractual Terms .....	13
Payment Terms .....	14
Intellectual Property .....	14
Confidentiality .....	14
Termination .....	14



# Executive Summary

DocuPal Demo, LLC is pleased to present this custom development proposal to Acme, Inc (ACME-1). This document outlines our approach to enhancing user engagement and streamlining content delivery on your platform. Our solution focuses on providing an improved user experience, more efficient content management, and enhanced platform scalability.

## Project Goals and Value

The primary objective of this project is to develop and deploy a web application that meets ACME-1's specific needs for content delivery and user interaction. This will be achieved through a user-centric design and a robust, scalable architecture. The value delivered includes:

- Improved user experience leading to increased engagement.
- Streamlined content management processes, saving time and resources.
- Enhanced platform scalability to accommodate future growth.

## Key Deliverables

The core deliverables of this project encompass a fully functional and deployed web application, complete with thorough documentation and ongoing support. Specific outcomes include:

- A production-ready web application hosted on Vercel.
- Comprehensive documentation covering application architecture, usage, and maintenance.
- Ongoing support and maintenance services to ensure continued optimal performance.

This proposal details our methodology, technology stack, project timeline, and associated costs. We are confident that our expertise in Vercel development and our commitment to client satisfaction make DocuPal Demo, LLC the ideal partner for ACME-1.



# Project Scope and Objectives

This document outlines the scope and objectives for the custom Vercel development project undertaken by Docupal Demo, LLC for Acme, Inc (ACME-1). This project aims to deliver a high-performance, scalable, and user-friendly platform tailored to ACME-1's specific needs.

## Project Scope

The project encompasses the development of a platform with the following key features and functionalities:

- **User Authentication:** Secure user login and registration system to manage access and personalize user experiences.
- **Personalized Content Delivery:** Dynamic content delivery based on user roles, preferences, and behavior to maximize engagement.
- **Intuitive Content Management System (CMS):** A user-friendly CMS enabling ACME-1's content creators to easily manage and update platform content.
- **Integration with Existing Systems:** Seamless integration with ACME-1's current systems to ensure data consistency and streamline workflows.

The project adheres to ACME-1's existing branding guidelines to maintain brand consistency across all digital assets. Any third-party integrations beyond those explicitly defined are excluded from the scope of this project.

## Project Objectives

The primary objectives of this project are to:

- **Enhance User Engagement:** Increase user engagement metrics, such as time spent on the site and pages visited per session. Success will be measured by tracking these metrics before and after the platform launch.
- **Streamline Content Management:** Reduce the time and effort required to manage platform content through the implementation of an intuitive CMS. We will measure the content management time before and after the new CMS deployment.
- **Improve Platform Performance:** Deliver a high-performance platform leveraging Vercel's capabilities to ensure optimal speed, reliability, and scalability. Platform performance metrics such as page load times and server



response times will be closely monitored.

- **Seamless Integration:** Ensure a smooth integration process with ACME-1's existing infrastructure, minimizing disruption and maximizing efficiency.
- **Scalability and Reliability:** Build a platform that can scale to accommodate future growth and maintain high reliability to ensure continuous availability.

These objectives will guide the development process and serve as key performance indicators (KPIs) for project success. The project's success will be determined by the achievement of these goals, resulting in a modern, efficient, and user-centric platform for ACME-1.

## Technical Approach and Architecture

This section outlines the technical approach and architecture for ACME-1 project, detailing the technology stack, deployment strategy, and architectural patterns.

### Technology Stack

Our approach leverages a modern technology stack to ensure performance, scalability, and maintainability.

- **Front-end:** React.js will be used for building the user interface. Its component-based architecture will enable efficient development and reusability.
- **Back-end:** Node.js with Express will power the application's server-side logic. This combination offers a robust and scalable environment for handling API requests and data processing.
- **Hosting:** Vercel will host the application. It provides a seamless deployment experience with built-in optimizations.

### Vercel Deployment Strategy

We will utilize Vercel's capabilities to optimize deployment and scalability.

- **Serverless Functions:** Vercel's serverless functions will be employed for handling specific tasks and API endpoints. This approach allows for automatic scaling and efficient resource utilization.
- **Global CDN:** Vercel's global content delivery network (CDN) will ensure fast loading times for users across different geographical locations. This enhances the user experience and improves overall performance.



- **Automatic Scaling:** Vercel automatically scales the application based on traffic demand. This eliminates the need for manual intervention and ensures consistent performance even during peak loads.
- **Continuous Integration/Continuous Deployment (CI/CD):** Vercel's built-in CI/CD pipeline automates the deployment process, enabling rapid iteration and faster time-to-market.

## Architectural Patterns

We will adopt a microservices architecture to promote modularity and scalability.

- **Microservices:** The application will be decomposed into smaller, independent services that communicate with each other. This approach enhances fault isolation, making it easier to update and scale individual components.
- **API Gateway:** An API gateway will manage incoming requests and route them to the appropriate microservices. This provides a single entry point for clients and simplifies the overall architecture.
- **Database:** We will choose a database solution that aligns with the application's specific needs, considering factors such as data volume, query patterns, and scalability requirements. The specific database will be determined during the detailed design phase.
- **Asynchronous Communication:** Message queues or similar mechanisms will be used for asynchronous communication between microservices. This improves system resilience and reduces dependencies between services.

## Project Timeline and Milestones

This section outlines the project's timeline, key milestones, and associated deliverables. We have structured the project into distinct phases to ensure a transparent and manageable development process.

### Project Phases

The project will proceed through the following phases:

1. **Discovery & Planning:** This initial phase involves gathering requirements, defining project scope, and establishing the project plan.





2. **Design & Prototyping:** This phase focuses on creating the user interface (UI) and user experience (UX) design, and developing interactive prototypes for review.
3. **Development:** During this phase, our team will build the core functionalities of the application based on the approved designs and specifications.
4. **Testing & QA:** This phase includes rigorous testing of the application to identify and resolve any bugs or issues.
5. **Deployment:** Following successful testing, we will deploy the application to the Vercel platform.
6. **Support & Maintenance:** We will provide ongoing support and maintenance to ensure the application's stability and performance.

## Key Milestones and Deliverables

Milestone	Description	Deadline
Milestone 1	Completion of Discovery & Planning phase, including finalized project plan.	[Date]
Milestone 2	Completion of Design & Prototyping phase, including approved prototypes.	[Date]
Milestone 3	Completion of Development phase, including core application functionalities.	[Date]
Milestone 4	Completion of Testing & QA phase, with all critical bugs resolved.	[Date]
Milestone 5	Successful Deployment of the application to the Vercel platform.	[Date]

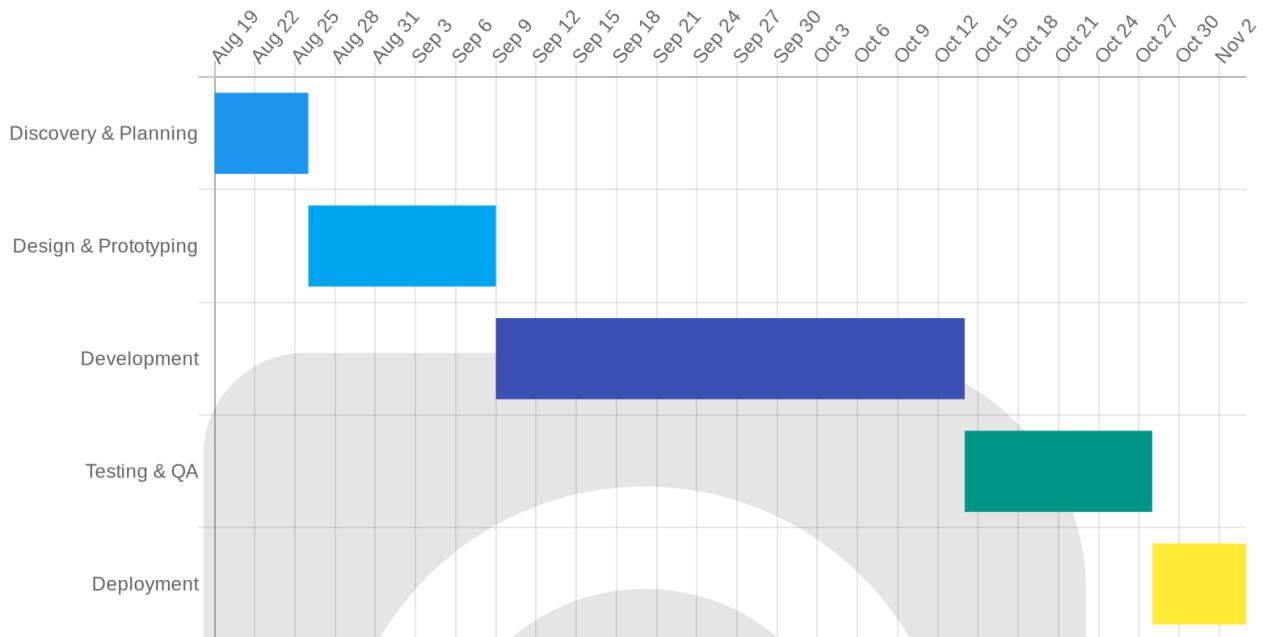
## Dependencies and Critical Path

A key dependency for the project is access to ACME-1's existing systems APIs. Timely access to these APIs is crucial for seamless integration and data flow.

The critical path for this project includes the completion of the CMS (Content Management System) development. The CMS is vital for effective content delivery and management within the application. Delays in CMS development could impact subsequent phases and the overall project timeline.



## Visual Timeline



## Budget and Cost Estimation

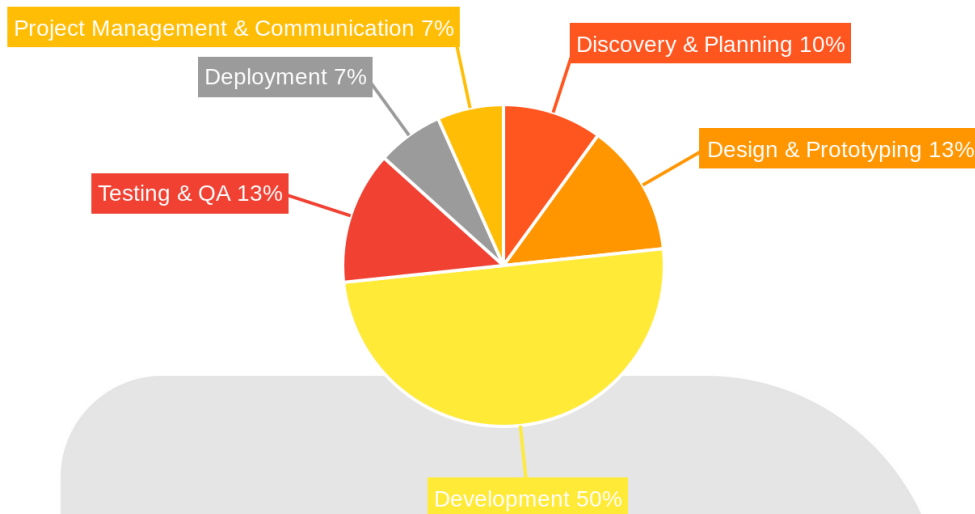
The total budget for this Vercel custom development project is \$150,000. This covers all phases, from initial planning to final deployment. The budget includes the cost of resources, project management, and ongoing communication.

### Cost Breakdown

The budget is allocated across the following key areas:

- **Discovery & Planning:** \$15,000
- **Design & Prototyping:** \$20,000
- **Development:** \$75,000
- **Testing & QA:** \$20,000
- **Deployment:** \$10,000
- **Project Management & Communication:** \$10,000





## Payment Schedule

We have structured the payment schedule to align with project milestones. This approach ensures transparency and shared accountability. Payments will be made according to the following schedule:

- 25% (\$37,500) upon signing the agreement.
- 25% (\$37,500) upon completion of Design & Prototyping.
- 30% (\$45,000) upon completion of Development.
- 20% (\$30,000) upon successful Deployment.

## Team and Roles

### Project Team

Docupal Demo, LLC will provide a dedicated team to ensure the success of ACME-1's Vercel custom development project. Our team's expertise spans project management, software development, and user experience design. We are committed to delivering high-quality results within the agreed-upon timelines and budget.

## Key Personnel

Our core team consists of three key members:

- **John Smith, Project Manager:** John will oversee the entire project lifecycle, ensuring effective communication, risk management, and adherence to the project plan. He brings over 10 years of experience in managing web development projects.
- **Alice Johnson, Lead Developer:** Alice will lead the development team, focusing on code quality, technical architecture, and implementation. She has 8+ years of experience in full-stack development, specializing in React and Node.js.
- **Bob Williams, UX/UI Designer:** Bob will be responsible for designing the user interface and ensuring a seamless user experience for ACME-1's application. He has 5+ years of experience in UX/UI design for web applications.

## Roles and Responsibilities

Team Member	Role	Responsibilities
John Smith	Project Manager	Overall project management, client communication, risk mitigation, timeline management, budget control, and reporting.
Alice Johnson	Lead Developer	Leading the development team, ensuring code quality, designing the technical architecture, implementing features, conducting code reviews, and resolving technical issues.
Bob Williams	UX/UI Designer	Designing the user interface, creating wireframes and prototypes, conducting user research, ensuring a seamless user experience, and collaborating with the development team to implement the design.

## Organizational Chart

Project Manager (John Smith) | |--- Lead Developer (Alice Johnson) | |--- UX/UI Designer (Bob Williams)



# Case Studies and Portfolio

## Relevant Experience

Our past projects showcase our expertise in delivering custom development solutions, particularly with technologies relevant to your needs. We leverage modern frameworks and serverless architectures to achieve tangible results for our clients.

### Project: Streamline

This project focused on enhancing user engagement through personalized content delivery.

- **Technologies:** React.js, Node.js, AWS Lambda, and a serverless architecture.
- **Outcomes:** By implementing personalized content delivery, we achieved a 40% increase in user engagement. This led to increased conversion rates, improved customer satisfaction, and reduced operational costs for the client.

We are confident in our ability to apply these skills and experiences to deliver a successful Vercel-based solution for ACME-1. Our approach prioritizes understanding your specific business goals and tailoring our development efforts to achieve measurable results.

## Risk Management and Mitigation

Docupal Demo, LLC recognizes that risks are inherent in any custom development project. We will actively monitor and manage these risks to ensure successful project delivery for ACME-1. Our approach includes identifying potential issues, assessing their impact, and implementing mitigation strategies.

### Technical Risks

Integration with ACME-1's existing systems poses a potential challenge. We will mitigate this through thorough planning, comprehensive testing, and employing alternative integration methods if needed. Scalability is another key consideration.



We will conduct performance testing throughout the development lifecycle and proactively scale the infrastructure on Vercel as required. Regular code reviews will also help identify and address potential technical issues early on.

## Project Risks

Scope creep is a common project risk. To mitigate this, we will maintain clear communication channels with ACME-1 and implement a formal change request process. Delays in receiving necessary information from ACME-1 could also impact the project timeline. We will work closely with ACME-1 to establish clear communication protocols and proactively follow up on any outstanding information requests. We will dedicate resources to address scope changes and maintain flexible timelines where possible. We will proactively assess and manage risks throughout the project lifecycle.

## Maintenance and Support

We offer comprehensive maintenance and support services to ensure your Vercel application runs smoothly and efficiently after deployment. Our support includes bug fixes, security updates, and technical assistance. We have designed our support services to provide you with peace of mind, allowing you to focus on your core business objectives.

### Support Levels and Response Times

We offer two support packages: Standard and Premium. Both packages ensure your application remains stable and secure.

Feature	Standard Support	Premium Support
Critical Issues	4-hour response	2-hour response
Standard Issues	24-hour response	12-hour response
Support Hours	Business Hours	24/7

Critical issues are defined as those that severely impact application functionality or availability. Standard issues include minor bugs and general inquiries.



## Upgrade and Enhancement Plans

Our upgrade plans encompass adding new features, improving performance, and maintaining compatibility with the latest technologies. We proactively monitor the Vercel platform and related technologies to identify opportunities for enhancement. These upgrades can include:

- **New Feature Implementation:** We can develop and integrate new features based on your evolving business needs.
- **Performance Optimization:** We continuously analyze application performance and implement optimizations to improve speed and efficiency.
- **Technology Updates:** We ensure your application remains compatible with the latest Vercel platform updates, libraries, and frameworks.

We will work closely with you to prioritize upgrades and enhancements based on your specific requirements and budget. We aim to provide flexible and scalable solutions.

## Terms and Conditions

These terms and conditions govern the Vercel custom development project undertaken by Docupal Demo, LLC ("Docupal") for Acme, Inc ("Client"). By engaging Docupal's services, the Client agrees to be bound by these terms.

### Contractual Terms

This agreement will commence on August 12, 2025, and will continue until the project's completion, unless terminated earlier as per the termination clause outlined below. Docupal will provide the services as described in the proposal, adhering to the project timeline and deliverables. Any changes to the project scope must be documented and agreed upon in writing by both parties.

### Payment Terms

The Client will pay Docupal according to the payment schedule outlined in the "Budget" section of this proposal. All invoices are payable within 30 days of the invoice date. Late payments may be subject to interest charges of 1.5% per month.



## Intellectual Property

Upon full and final payment, all intellectual property rights, title, and interest in the project deliverables will be transferred to the Client. Docupal retains the right to use its general knowledge, skills, and experience, including that gained from this project, in other projects.

## Confidentiality

Both parties agree to hold each other's confidential information in strict confidence. This includes, but is not limited to, business strategies, technical information, and customer data. Confidentiality obligations will survive the termination of this agreement. Docupal employs secure data storage practices to protect confidential information. A separate Non-Disclosure Agreement (NDA) can be provided if required.

## Termination

Either party may terminate this agreement with 30 days' written notice if the other party breaches a material term of this agreement and fails to cure such breach within the 30-day notice period. Upon termination, the Client will pay Docupal for all services performed up to the date of termination. Docupal will deliver all completed work and works in progress to the Client upon termination, subject to payment of outstanding fees.

