

Table of Contents

Introduction and Executive Summary	3
Purpose of the Upgrade	3
Current State and Proposed Enhancements	3
Current State Assessment	4
Performance Bottlenecks	4
Feature Limitations	4
Security and Compliance Gaps	4
Proposed Upgrade Solutions and Features	5
Enhanced Features and Capabilities	5
Improved Deployment Workflows	5
Integrations and Third-Party Services	6
Current vs Proposed Capabilities	6
Cost-Benefit and ROI Analysis	6
Investment Costs	6
Operational Benefits and Cost Savings	7
Revenue Benefits and Efficiency Gains	8
Return on Investment (ROI)	8
Security and Compliance Considerations	8
Vulnerability Mitigation	9
Compliance Frameworks	9
Data Protection Enhancements	9
Migration and Implementation Plan	9
Project Phases and Timeline	10
Resource Allocation	10
Risk Mitigation	11
Step-by-Step Implementation	11
Impact on Development and Operations Teams	12
Development Team	12
Operations Team	12
Monitoring and Performance Metrics Post-Upgrade	13
Post-Upgrade Monitoring Strategy	13
Key Performance Indicators (KPIs)	13
Monitoring Tools and Dashboards	13



Performance Benchmarks	14
Illustrative Performance Improvements	14
Conclusion and Recommendations	14
Recommended Action	14
Post-Approval Review Process	14



Introduction and Executive Summary

This document presents a proposal from Docupal Demo, LLC to Acme, Inc (ACME-1) for upgrading your existing Netlify infrastructure. ACME-1 currently uses Netlify for static site hosting and basic form handling. This upgrade addresses current limitations and prepares your platform for future growth.

Purpose of the Upgrade

The primary objective of this Netlify upgrade is to enhance website performance, fortify your security posture, and streamline content updates. This will directly benefit several key stakeholders, including the Marketing Team, Development Team, IT Security, and Content Creators.

Current State and Proposed Enhancements

ACME-1's current Netlify setup provides a foundation for your web presence. However, it now faces challenges in terms of scalability, advanced security features, and efficient content deployment. This upgrade will deliver:

- **Improved Website Performance:** Optimized content delivery networks (CDNs) and caching strategies will result in faster loading times and a better user experience.
- **Enhanced Security Posture:** Implementation of advanced security protocols and features will protect against emerging threats and ensure data integrity.
- **Streamlined Content Updates:** Simplified deployment workflows and content management integration will allow for quicker and more efficient content updates.

By implementing this upgrade, ACME-1 can expect to see significant improvements in website speed, security, and content management efficiency.

Current State Assessment

Acme Inc. currently utilizes Netlify for its web hosting and deployment needs. A review of the existing infrastructure reveals several areas that require attention to optimize performance, security, and scalability.



Performance Bottlenecks

Currently, Acme Inc. experiences slow build times on the Netlify platform. This is impacting the speed at which content updates can be deployed. Limited analytics capabilities also hinder the ability to effectively monitor website performance and user behavior. The content deployment processes are largely manual, leading to inefficiencies and potential for human error.

The above chart illustrates the increasing build times over the past four weeks, measured in minutes.

Feature Limitations

The current Netlify setup lacks several features that are crucial for Acme Inc.'s growth and evolving needs. There is a need for more advanced analytics to gain deeper insights into user engagement and conversion rates. The absence of built-in user authentication mechanisms poses challenges for implementing secure areas on the website. A/B testing capabilities are also missing, which are essential for optimizing content and user experience.

Security and Compliance Gaps

Several security and compliance gaps exist within the current Netlify infrastructure. The basic DDoS protection in place is inadequate for mitigating sophisticated attacks. There is a lack of role-based access controls, which limits the ability to granularly manage user permissions and ensure data security. The absence of detailed audit logs makes it difficult to track user activity and identify potential security breaches. These gaps expose Acme Inc. to potential security risks and compliance violations.

Proposed Upgrade Solutions and Features

This section outlines the solutions and features included in the proposed Netlify upgrade for ACME-1. The upgrade addresses current limitations and introduces enhancements to improve performance, security, and workflows.



Enhanced Features and Capabilities

The Netlify upgrade introduces several key features designed to enhance ACME-1's web infrastructure:

- **Enhanced Analytics Dashboards:** Gain deeper insights into website performance with comprehensive analytics dashboards. These dashboards will provide real-time data on user behavior, traffic patterns, and conversion rates, enabling data-driven decision-making.
- **User Authentication:** Implement secure user authentication to protect sensitive content and personalize user experiences. This feature allows for controlled access to specific website areas and enables the creation of member-only content. Integration with Auth0 is an available option.
- **A/B Testing:** Optimize website content and design through A/B testing. This feature allows for testing different versions of web pages to determine which performs best, leading to improved engagement and conversion rates.
- **Advanced DDoS Protection:** Protect against distributed denial-of-service (DDoS) attacks with advanced security measures. This feature ensures website availability and performance even during malicious attacks, safeguarding ACME-1's online presence.

These new features will provide ACME-1 with the tools needed to improve website performance, security, and user engagement.

Improved Deployment Workflows

The upgrade streamlines deployment workflows, making them more efficient and reliable:

- **Automated Deployments via Git Integration:** Trigger deployments automatically whenever changes are pushed to the Git repository. This eliminates manual deployment steps and ensures that the website is always up-to-date with the latest code.
- **Preview Deployments for Content Review:** Review changes in a staging environment before they go live with preview deployments. This allows content creators and stakeholders to provide feedback and ensure quality before updates are published.
- **Rollbacks for Failed Deployments:** Quickly revert to a previous version of the website in case of a failed deployment. This minimizes downtime and ensures a seamless user experience, even when issues arise.



These improvements will reduce deployment time and improve the reliability of website updates.

Integrations and Third-Party Services

The upgrade includes enhanced integrations with key third-party services:

- **Google Analytics:** Seamless integration with Google Analytics provides comprehensive website analytics and tracking.
- **Contentful CMS:** Improved integration with Contentful CMS streamlines content management and publishing workflows. This allows content creators to easily update website content without requiring technical expertise.
- **Auth0 (Potential Integration):** Potential integration with Auth0 for robust and scalable authentication services.

These integrations enhance the functionality and flexibility of ACME-1's web infrastructure.

Current vs Proposed Capabilities

Cost-Benefit and ROI Analysis

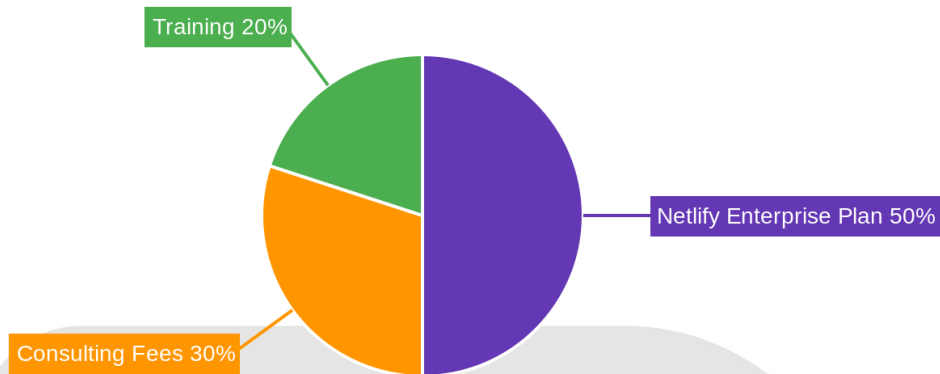
The Netlify upgrade represents a strategic investment in ACME-1's web infrastructure. This analysis details the costs, benefits, and projected return on investment (ROI).

Investment Costs

The total estimated cost for the Netlify upgrade is \$15,000. This includes several key components:

- **Netlify Enterprise Plan:** The cost of the Netlify Enterprise plan, providing enhanced features and support.
- **Consulting Fees:** Expert consulting services to ensure seamless upgrade and configuration.
- **Training:** Comprehensive training for ACME-1's team to maximize the benefits of the new system.

The cost distribution is illustrated below:



Operational Benefits and Cost Savings

The upgrade will lead to several operational improvements and cost savings:

- **Reduced Manual Deployment Efforts:** Automation features will significantly decrease the time and resources spent on manual deployments.
- **Optimized Resource Utilization:** Netlify's efficient infrastructure will optimize resource allocation and reduce hosting costs.
- **Lower Risk of Security Incidents:** Enhanced security features will minimize the risk of costly security breaches.

Revenue Benefits and Efficiency Gains

The Netlify upgrade is expected to generate significant revenue benefits and efficiency gains for ACME-1:

- **Improved Website Loading Times:** A 20% improvement in website loading times will enhance user experience and SEO rankings.
- **Increased Lead Generation:** A 15% increase in lead generation due to improved website performance and user engagement.
- **Reduced Content Deployment Time:** A 10% reduction in content deployment time will enable faster updates and marketing campaigns.



Return on Investment (ROI)

The following table summarizes the projected financial benefits of the Netlify upgrade:

Benefit	Estimated Value
Website Loading Time (20%)	\$5,000 per year
Lead Generation (15%)	\$7,500 per year
Content Deployment (10%)	\$2,500 per year
Total Annual Benefit	\$15,000

Based on these projections, the Netlify upgrade is expected to pay for itself within the first year. The projected ROI over a three-year period is substantial.

The projected ROI is visualized in the following chart:

Security and Compliance Considerations

This Netlify upgrade prioritizes enhancing the security posture of ACME-1's web infrastructure and ensuring adherence to key compliance standards. The upgrade directly addresses several critical vulnerabilities.

Vulnerability Mitigation

The proposed upgrade includes measures to mitigate risks associated with Distributed Denial-of-Service (DDoS) attacks. Enhanced security protocols are implemented to prevent unauthorized access to sensitive data and system resources. We strengthen defenses against potential threats by updating Netlify's security configurations.

Compliance Frameworks

This Netlify upgrade enables ACME-1 to meet and exceed the requirements of several important compliance frameworks. These include:

- **GDPR:** Ensures the protection of personal data and privacy of individuals within the European Economic Area.

- **CCPA:** Provides California residents with specific rights regarding their personal information.
- **SOC 2:** Validates the security, availability, processing integrity, confidentiality, and privacy controls of ACME-1's systems.

Data Protection Enhancements

We will implement several key enhancements to bolster data protection. These include:

- **Enhanced Encryption Protocols:** Upgrading to stronger encryption methods for data in transit and at rest.
- **Role-Based Access Controls:** Implementing granular access controls to limit data access to authorized personnel only.
- **Detailed Audit Logs:** Maintaining comprehensive audit logs to track data access and modifications for security monitoring and incident response.

Migration and Implementation Plan

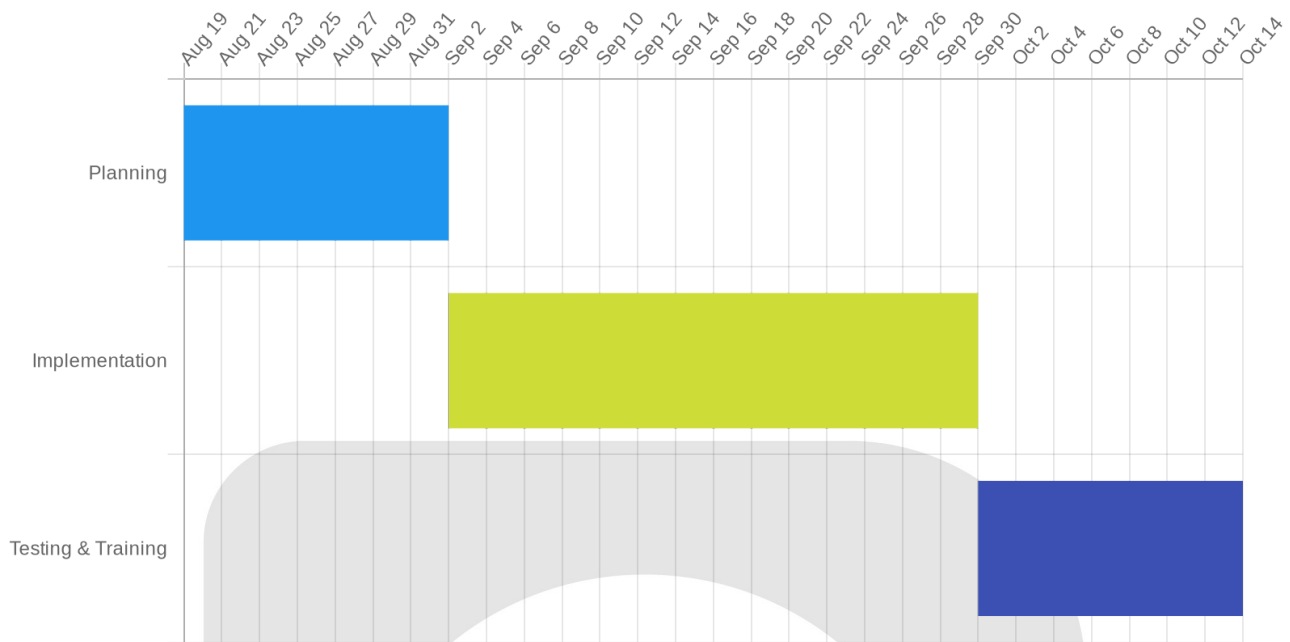
This section details the plan for upgrading ACME-1's Netlify infrastructure. Our approach focuses on minimizing disruption and ensuring a smooth transition. The project will span 8 weeks, encompassing planning, implementation, testing, and training.

Project Phases and Timeline

The upgrade will proceed in three main phases:

1. **Planning (2 weeks):** This initial phase involves a thorough assessment of the current Netlify setup, defining upgrade requirements, and designing the new architecture. We will also establish clear communication channels and project management protocols.
2. **Implementation (4 weeks):** This phase includes the actual upgrade of the Netlify infrastructure. We will configure new settings, migrate existing data, and integrate with other systems. Blue/green deployments will be used to minimize downtime.
3. **Testing and Training (2 weeks):** In this phase, rigorous testing will be conducted in staging environments to identify and resolve any issues. Training will be provided to ACME-1's team on the new features and functionalities.





Resource Allocation

The following resources will be required for the project:

- **Docupal Demo, LLC:** Netlify experts will lead the upgrade process.
- **ACME-1 Development Team (2 members):** Internal developers will assist with integration and customization.
- **ACME-1 IT Security Team (1 member):** Security personnel will ensure compliance and data protection.
- **ACME-1 Content Team (2 members):** Content specialists will help with content migration and testing.

Risk Mitigation

We will employ several strategies to minimize potential risks:

- **Blue/Green Deployments:** This approach allows us to switch between the old and new environments with minimal downtime.
- **Thorough Testing:** Extensive testing in staging environments will identify and resolve issues before they impact the production environment.
- **Rollback Plan:** A detailed rollback plan will be in place to quickly revert to the previous configuration if necessary.

- **Continuous Monitoring:** We will monitor the upgraded infrastructure closely to ensure optimal performance and stability.

Step-by-Step Implementation

1. **Assessment and Planning:** Conduct a detailed review of the current Netlify configuration and identify upgrade requirements.
2. **Environment Setup:** Create staging and production environments for the upgraded infrastructure.
3. **Configuration and Migration:** Configure new settings, migrate data, and integrate with existing systems.
4. **Testing:** Perform thorough testing in the staging environment.
5. **Deployment:** Deploy the upgraded infrastructure to the production environment using blue/green deployments.
6. **Monitoring and Optimization:** Continuously monitor performance and optimize the configuration.
7. **Training:** Provide training to ACME-1's team on the new features.

Impact on Development and Operations Teams

The Netlify upgrade will significantly improve workflows for both development and operations teams at ACME-1. We anticipate faster, more reliable deployments, streamlined collaboration, and enhanced security.

Development Team

- **Improved Deployment Frequency:** Developers can expect to deploy code more frequently, aiming for daily deployments.
- **Branch-Based Deployments:** New Netlify features, such as branch-based deployments, will allow developers to test and preview changes in isolated environments before merging to production.
- **Automated Testing:** Integration of automated testing into the CI/CD pipeline will help catch bugs earlier in the development cycle, reducing the risk of production issues.
- **Enhanced Collaboration:** Content creators will receive training on new Netlify features, improving their ability to manage and update website content independently.



- **Comprehensive Documentation:** Developers will have access to detailed documentation covering all aspects of the upgraded Netlify infrastructure.

Operations Team

- **Increased Deployment Success Rate:** We are targeting a 99.9% deployment success rate, minimizing downtime and ensuring a smooth user experience.
- **Streamlined CI/CD Pipelines:** Modifications to existing CI/CD pipelines will simplify the deployment process and improve overall efficiency.
- **Reduced Manual Intervention:** Automation features will reduce the need for manual intervention in the deployment process, freeing up operations team members to focus on other tasks.
- **Ongoing Support:** Docupal Demo, LLC will provide ongoing support to the operations team, addressing any issues or questions that may arise.
- **Enhanced Monitoring and Alerting:** Improved monitoring and alerting capabilities will enable the operations team to quickly identify and resolve any performance issues or security threats.

Monitoring and Performance Metrics Post-Upgrade

Post-Upgrade Monitoring Strategy

To ensure the Netlify upgrade meets Acme, Inc's objectives, we will continuously monitor key performance indicators (KPIs). These metrics will provide insights into the upgrade's impact on website performance, security, and user experience.

Key Performance Indicators (KPIs)

We will track the following KPIs:

- **Website Loading Times:** Measures the time it takes for web pages to load. Faster loading times improve user experience and SEO rankings.
- **Deployment Frequency:** Tracks how often code changes are deployed. Increased frequency indicates improved agility and faster release cycles.
- **Error Rates:** Monitors the number of errors encountered by users. Lower error rates signify a more stable and reliable website.



- **User Engagement Metrics:** Analyzes user behavior on the website, including bounce rate, time on page, and conversion rates. Improved engagement reflects a more effective website.
- **Security Incident Reports:** Tracks the number and severity of security incidents. Fewer incidents demonstrate enhanced security posture.

Monitoring Tools and Dashboards

We will use the following tools and dashboards to monitor these KPIs:

- **Netlify Analytics Dashboard:** Provides built-in analytics for website performance, traffic, and deployments.
- **Google Analytics:** Offers comprehensive insights into user behavior, demographics, and conversion tracking.
- **Security Monitoring Tools:** Continuously monitors for security threats and vulnerabilities.

Performance Benchmarks

We will establish performance benchmarks based on Acme, Inc's current performance, industry standards, and desired improvements. These benchmarks will serve as targets for measuring the success of the upgrade. Post-upgrade, we will compare the monitored KPIs against these benchmarks to assess the upgrade's impact.

Illustrative Performance Improvements

The area chart below shows the expected improvement in website loading times post-upgrade.

Conclusion and Recommendations

This Netlify upgrade directly addresses ACME-1's critical needs. It enhances website performance, fortifies security, and streamlines content management. These improvements translate into tangible business benefits. Expect a more efficient workflow, reduced operational risk, and improved customer experiences.



Recommended Action

We strongly recommend approving this Netlify upgrade proposal. Allocate the required resources to initiate the project promptly. This investment ensures ACME-1 remains competitive and secure.

Post-Approval Review Process

Following approval, we propose a structured review process. This includes:

- Weekly progress meetings to track milestones.
- KPI reviews to assess performance improvements.
- Regular status updates to keep stakeholders informed.

This transparent approach ensures accountability and project success.

