

Table of Contents

Introduction	3
Project Overview	3
Addressing Key Challenges	3
Objectives	3
Market Analysis	3
Industry Trends	4
Market Growth Projections	4
Proposed Solution and Services	4
Technology Stack	5
Netlify Feature Integration	5
Scalability and Performance	5
Services Offered	5
Deliverables	6
Technology Stack and Architecture	6
Front-End Development	6
Hosting and Deployment	6
Integrations	7
Architecture Diagram	7
Project Timeline and Milestones	7
Project Phases	7
Key Milestones	8
Project Schedule	8
Pricing and Payment Terms	8
Project Pricing	9
Payment Schedule	9
Ongoing Maintenance and Support	9
Payment Methods	9
Currency	9
Team and Expertise	9
Our Team and Expertise	9
Key Personnel	10
Quality Assurance and Timely Delivery	10
Case Studies and Previous Work	10



Relevant Experience	10
Project Showcase	11
Measurable Results	11
Relevance to ACME-1's Needs	11
Security and Compliance	12
Security Best Practices	12
Data Protection	12
Conclusion and Next Steps	12
Proposal Summary	13
Next Steps	13



Introduction

Project Overview

Docupal Demo, LLC presents this proposal to ACME-1 outlining our plan to redesign and rebuild your website using Netlify and a modern Jamstack architecture. ACME-1, as a prominent e-commerce business, aims to increase online sales and significantly improve customer experience. This project directly addresses the challenges posed by your current website's outdated design, slow loading times, suboptimal mobile experience, and cumbersome content update process.

Addressing Key Challenges

The proposed solution focuses on creating a fast, responsive, and user-friendly website that enhances ACME-1's online presence. By leveraging Netlify's capabilities and a modern Jamstack approach, we will improve website performance, simplify content management, and deliver a superior experience for your customers. This will provide ACME-1 with a competitive edge in the e-commerce landscape.

Objectives

The primary objectives of this project include:

- Boosting online sales through an enhanced user experience.
- Improving customer satisfaction with a faster and more responsive website.
- Simplifying content updates for ACME-1's team.
- Modernizing the website's design and architecture.

Market Analysis

The market for Netlify custom development is experiencing substantial growth, driven by the increasing adoption of Jamstack architecture. ACME-1 stands to benefit significantly from this trend by leveraging Netlify's capabilities for improved website performance, security, and scalability.



Industry Trends

Several key industry and technology trends are shaping the Netlify and Jamstack landscape:

- **Growing Demand for Web Performance:** Users expect fast and seamless web experiences. Jamstack, with its pre-rendered static assets and CDN delivery, offers superior performance compared to traditional dynamic websites.
- **Rise of Headless CMS:** Headless CMS solutions are gaining popularity. They allow developers to decouple the content repository from the presentation layer, providing greater flexibility and control over the front-end. Netlify integrates seamlessly with various headless CMS platforms.
- **Serverless Architecture:** Serverless functions are becoming increasingly prevalent. They enable developers to build and deploy backend logic without managing servers. Netlify Functions provides a simple and efficient way to incorporate serverless functionality into Jamstack applications.
- **Increased Focus on Security:** Web security is a top priority for businesses. Netlify's platform offers built-in security features, such as automated SSL certificates and DDoS protection.
- **Jamstack Adoption:** Jamstack architecture is gaining momentum as businesses seek faster, more secure, and scalable websites. Netlify is a leading platform for deploying and managing Jamstack applications.

Market Growth Projections

The Jamstack market has seen exponential growth in recent years. Market analysis suggests a continued upward trajectory.

Proposed Solution and Services

Docupal Demo, LLC will deliver a tailored Netlify solution for ACME-1. Our approach centers on a modern, scalable, and high-performance web application built on the Netlify platform.

Technology Stack

We will leverage the following technologies:

- **Frontend:** React, JavaScript



- **Backend:** Headless CMS (Contentful)
- **Platform:** Netlify

Netlify Feature Integration

Our solution will deeply integrate with Netlify's core features to maximize efficiency and performance:

- **Netlify Functions:** We will use Netlify Functions for dynamic tasks and server-side logic.
- **Netlify Forms:** Netlify Forms will handle form submissions.
- **Netlify Identity:** We will implement Netlify Identity for user authentication.
- **Netlify's Global CDN:** We will use Netlify's global CDN for optimal content delivery.

Scalability and Performance

We will ensure scalability and performance through several strategies:

- **Netlify's Global CDN:** Content will be delivered via Netlify's globally distributed CDN.
- **Optimized Code:** Our code will be optimized for speed and efficiency.
- **Serverless Functions:** We will use serverless functions to handle dynamic tasks.

Services Offered

Our services encompass the following:

- **Requirements Gathering & Planning:** We'll start by deeply understanding ACME-1's needs and goals.
- **Custom Development:** We will develop the web application using React, JavaScript, and Contentful CMS.
- **Netlify Configuration:** We will configure Netlify to support the application.
- **Integration:** We will integrate Netlify Functions, Forms, and Identity.
- **Testing:** We'll conduct thorough testing to ensure quality.
- **Deployment:** We will deploy the application to Netlify.
- **Training & Support:** We'll provide training and ongoing support.



Deliverables

The key deliverables include:

- A fully functional web application hosted on Netlify.
- Complete source code.
- Documentation.
- Training materials.

Technology Stack and Architecture

Our proposed solution for ACME-1 leverages a modern technology stack centered around Netlify for hosting and deployment. We use React as our primary JavaScript framework. This choice allows for building a fast and interactive user interface.

Front-End Development

We will develop the front-end using React. React's component-based architecture promotes code reusability. It also ensures maintainability of the ACME-1 application. JavaScript will be the core programming language.

Hosting and Deployment

We will host the application on Netlify. Netlify provides a robust platform for deploying static sites and single-page applications. Our deployment process will be automated through Git. Each push to the main branch triggers a new build and deployment on Netlify. This automated CI/CD pipeline ensures fast and reliable updates.

Integrations

The ACME-1 application will integrate with several third-party services:

- **Payment Gateway:** We will integrate Stripe for secure and reliable payment processing.
- **Email Marketing:** Mailchimp will be used for email marketing campaigns and customer communication.
- **CRM:** We will integrate with Salesforce to streamline customer relationship management.



Architecture Diagram

```
graph LR
  A[User] --> B[Netlify CDN]
  B --> C[React Application]
  C --> D[Stripe API]
  C --> E[Mailchimp API]
  C --> F[Salesforce API]
  G[Git Repository] --> H[Netlify Build Server]
  H --> B
  style A fill:#f9f,stroke:#333,stroke-width:2px
  style B fill:#ccf,stroke:#333,stroke-width:2px
  style C fill:#ccf,stroke:#333,stroke-width:2px
  style D fill:#f9f,stroke:#333,stroke-width:2px
  style E fill:#f9f,stroke:#333,stroke-width:2px
  style F fill:#f9f,stroke:#333,stroke-width:2px
  style G fill:#ccf,stroke:#333,stroke-width:2px
  style H fill:#ccf,stroke:#333,stroke-width:2px
```

This architecture ensures a scalable and maintainable application for ACME-1.

Project Timeline and Milestones

This section outlines the project's timeline, key milestones, and deliverables. The project is expected to take 10 weeks from the date of proposal acceptance.

Project Phases

The project will be executed in three phases:

- 1. Discovery & Planning (2 weeks):** This initial phase focuses on gathering detailed requirements, defining the project scope, and creating a comprehensive project plan. Deliverables include a detailed project plan and finalized requirements document. Client review of design mockups will occur at the end of this phase.
- 2. Design & Development (6 weeks):** This phase involves the design and development of the Netlify custom solution based on the approved project plan and design mockups. Deliverables include the developed application and associated documentation.
- 3. Testing & Deployment (2 weeks):** This final phase includes rigorous testing of the developed solution, bug fixing, and deployment to the Netlify platform. Client sign-off is required before deployment at the end of this phase.

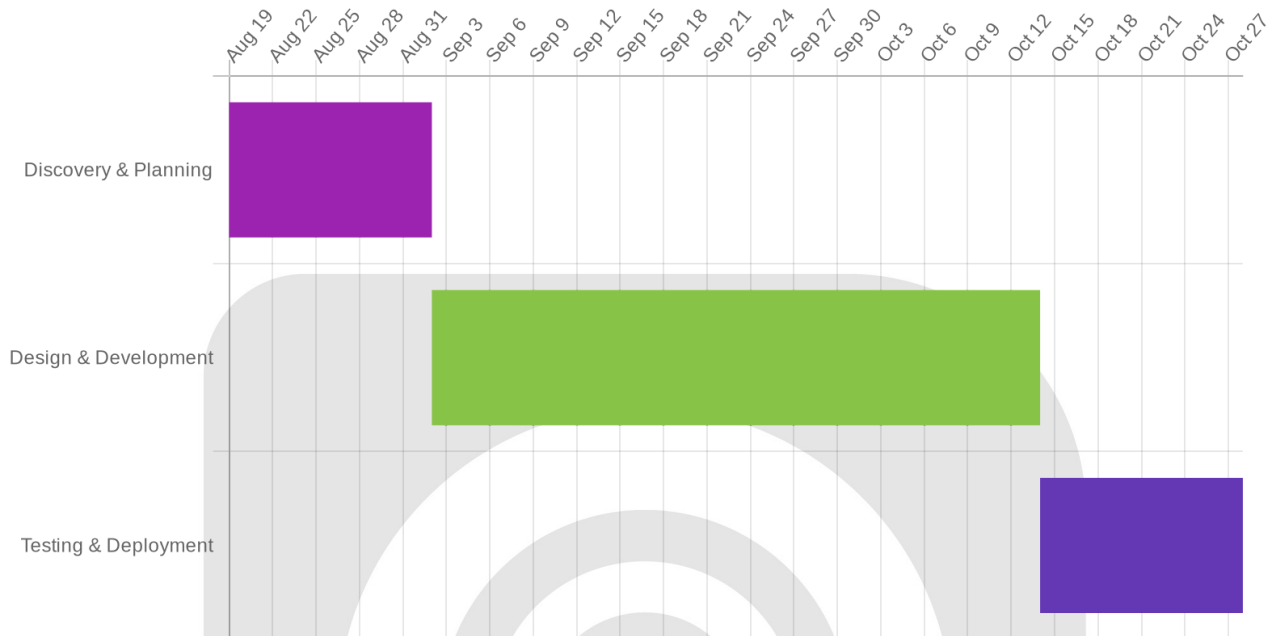
Key Milestones

- **End of Phase 1:** Client review and approval of design mockups.
- **End of Phase 3:** Client sign-off for final deployment.



- **Project Completion:** [Date 10 weeks from proposal acceptance]

Project Schedule



Pricing and Payment Terms

This section outlines the pricing structure and payment terms for the Netlify custom development project for ACME-1. Our pricing model is based on a fixed price for each project phase.

Project Pricing

We have structured the pricing around key project phases to ensure transparency and predictability. A detailed breakdown of the fixed price for each phase will be provided in the attached project scope document.

Payment Schedule

To initiate each phase of the project, we require an upfront payment. The payment schedule is as follows:



- **50% Upfront:** Due upon commencement of each project phase.
- **50% Upon Completion:** Due upon successful completion and acceptance of each phase.

Ongoing Maintenance and Support

Docupal Demo, LLC offers an optional ongoing maintenance and support plan to ensure the continued optimal performance of your Netlify application. Details regarding the scope and cost of this plan are available upon request.

Payment Methods

We accept payment via bank transfer and ACH. Payment details will be provided on our invoices.

Currency

All pricing is listed in United States Dollars (USD).

Team and Expertise

Our Team and Expertise

Docupal Demo, LLC will provide a dedicated team to ensure the success of ACME-1's Netlify custom development project. Our team's combined skills and experience will deliver a high-quality solution on time.

Key Personnel

- **[Project Manager Name]:** [Project Manager Name] will serve as the primary point of contact. [He/She/They] bring [Project Manager skills] to the project, ensuring clear communication, efficient workflow, and adherence to project timelines.
- **[Lead Developer Name]:** [Lead Developer Name] will lead the development efforts, bringing extensive experience in Netlify development and related technologies. [He/She/They] possess [Lead Developer skills], ensuring a robust and scalable solution.



- **[UI/UX Designer Name]:** [UI/UX Designer Name] will focus on creating a user-friendly and visually appealing interface. [He/She/They] bring [UI/UX Designer skills] to create intuitive designs.

Quality Assurance and Timely Delivery

Our team follows Agile development methodologies, promoting iterative development and continuous feedback. We incorporate code reviews and a thorough testing process to ensure the quality and reliability of the solution. This approach allows us to adapt to changing requirements and deliver the project on schedule and within budget.

Case Studies and Previous Work

Relevant Experience

Docupal Demo, LLC brings extensive experience to ACME-1, creating custom Netlify solutions. Our past projects demonstrate our ability to deliver high-quality, performant web applications. We tailor our approach to meet each client's specific needs.

Project Showcase

We've successfully completed several projects that showcase our expertise:

- **Project 1:** We developed a marketing website for a SaaS company using Netlify, React, and headless CMS. This project focused on improving website speed and lead generation.
- **Project 2:** We built an e-commerce platform using Netlify, Next.js, and a third-party API. The focus was on creating a scalable and secure online shopping experience.

Measurable Results

Our work has yielded significant results for our clients:

- **Project 1:** Website load times decreased by 40%, and lead generation increased by 25% within the first quarter.

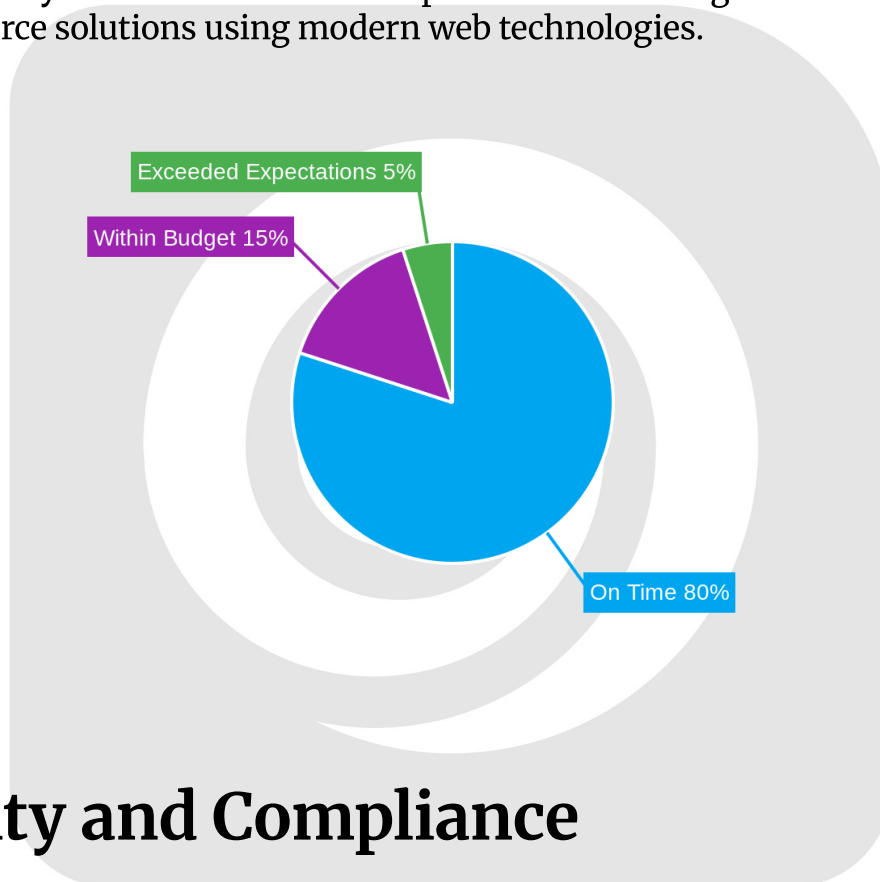


- **Project 2:** The e-commerce platform saw a 30% increase in online sales and a 99.99% uptime.

Relevance to ACME-1's Needs

These case studies demonstrate our capabilities directly relevant to ACME-1's proposed solution:

- **Case Study 1:** Showcases our ability to build performant websites on Netlify that drive business results.
- **Case Study 2:** Demonstrates our experience in building scalable and secure e-commerce solutions using modern web technologies.



Security and Compliance

Docupal Demo, LLC prioritizes the security and compliance of all solutions developed for ACME-1. We implement robust security measures to protect your data and ensure the reliability of our services.

Security Best Practices

We adhere to industry-leading security best practices throughout the development lifecycle. This includes utilizing HTTPS for secure communication, employing secure coding practices to minimize vulnerabilities, and conducting regular security audits to identify and address potential risks.

Data Protection

Protecting ACME-1's data is of utmost importance. We employ encryption to safeguard data both in transit and at rest. Access to data is strictly controlled through defined authorization mechanisms. Our approach ensures that only authorized personnel can access sensitive information. We will work to ensure compliance with relevant privacy regulations, including GDPR and CCPA. These regulations guide our data handling procedures and ensure that user data is managed responsibly and transparently.

Conclusion and Next Steps

Proposal Summary

This proposal outlines a custom development solution leveraging a modern Jamstack architecture on Netlify. The approach will deliver improved performance, enhanced user experience, and a highly scalable solution tailored to ACME-1's specific needs.

Next Steps

To move forward, ACME-1 should review and sign this proposal. Following the signature, we will schedule a kickoff meeting to align on project timelines, introduce the team, and solidify communication channels. Throughout the project, we will provide weekly progress updates and hold regular meetings. A dedicated Slack channel will also be established for efficient communication and quick issue resolution.

