

Table of Contents

Executive Summary	3
Business Imperatives	3
Proposed Solution & Expected Outcomes	3
Current State Assessment	3
Power Platform Components in Use	4
Challenges and Limitations	4
User Adoption and Performance Measurement	4
Upgrade Objectives and Scope	4
Objectives	4
Scope	5
Success Metrics	5
Proposed Solution and Architecture	5
Upgrade Approach	6
New Capabilities	6
Integration	6
Technical Architecture	7
Implementation Plan and Timeline	7
Project Phases	7
Roles and Responsibilities	7
Detailed Steps	8
Risk Mitigation	9
Timeline	9
Governance, Security, and Compliance	10
Data Governance	10
Security Protocols	10
Compliance Standards	10
Cost-Benefit and ROI Analysis	11
Upgrade Costs	11
Tangible Benefits	11
Intangible Benefits	11
Return on Investment (ROI)	11
Financial Summary	12
Cost vs. Benefits Chart	12



Training and Change Management	12
User Training	12
Change Management Strategies	13
Adoption Measurement and Encouragement	13
Migration and Data Strategy	13
Phased Migration Approach	14
Ensuring Data Integrity	14
Rollback and Contingency Plans	14
About Us	14
Our Expertise	15
Proven Track Record	15
Conclusion and Next Steps	15
Immediate Actions	15
Stakeholder Requirements	15
Communication Plan	16



Executive Summary

This document outlines a comprehensive plan to update and upgrade Acme, Inc's (ACME-1) existing Power Platform environment. Docupal Demo, LLC, proposes this upgrade to address key business challenges and unlock new opportunities for ACME-1. The upgrade focuses on enhancing automation, boosting efficiency, and enabling better data-driven decisions across the organization.

Business Imperatives

ACME-1 currently faces challenges including inefficient workflows, data silos hindering comprehensive analysis, and limited reporting capabilities affecting strategic decision-making. This Power Platform upgrade directly tackles these issues by modernizing the technology and streamlining processes.

Proposed Solution & Expected Outcomes

The proposed upgrade includes several key improvements designed to deliver tangible results. These include enhanced automation capabilities to streamline processes, improved data integration to break down silos, and advanced reporting tools to provide actionable insights. The expected outcomes are streamlined processes, increased productivity, and improved business insights. By implementing these upgrades, ACME-1 can expect to see a significant return on investment through improved operational efficiency and better-informed strategic decisions.

Current State Assessment

ACME-1 currently utilizes several key components of the Microsoft Power Platform. These include Power Apps, Power Automate, and Power BI. This assessment outlines the current state of these tools, highlighting limitations, challenges, and user adoption metrics.



Power Platform Components in Use

ACME-1 leverages Power Apps for specific application needs. Power Automate is used to automate workflows. Power BI provides data visualization and reporting capabilities.

Challenges and Limitations

Several limitations impact ACME-1's current Power Platform environment. Scalability is a key concern, making it difficult to adapt to growing data volumes and user demands. Limited customization options restrict the ability to tailor solutions to specific business requirements. Performance bottlenecks affect user experience and productivity.

User Adoption and Performance Measurement

User adoption is monitored through feedback surveys and adoption rates. System performance metrics are also tracked to identify areas for improvement. These metrics provide insight into the effectiveness of the Power Platform implementation and areas needing attention.

Upgrade Objectives and Scope

This section details the objectives, scope, and success metrics for the Power Platform upgrade at ACME-1. The upgrade aims to modernize and enhance ACME-1's business processes within Sales, Marketing, and Operations.

Objectives

The primary objectives of this Power Platform upgrade are:

- **Modernize Power Apps:** Transition existing Canvas apps to Model-driven apps. This will leverage the benefits of a data-centric approach, improved user interface, and enhanced security features.
- **Enhance Automation:** Implement Robotic Process Automation (RPA) capabilities within Power Automate. Automating repetitive tasks will free up employees. They will be able to focus on higher-value activities.



- **Improve Analytics:** Empower ACME-1 with advanced analytics capabilities in Power BI. Enable deeper insights into business performance and support data-driven decision-making.

Scope

The scope of this upgrade encompasses the following:

- **Business Units:** Sales, Marketing, and Operations departments at ACME-1.
- **Power Platform Components:** Power Apps, Power Automate, and Power BI.
- **Geographic Location:** All ACME-1 locations.
- **Data Migration:** Migration of relevant data from existing systems to the upgraded Power Platform environment.
- **User Training:** Comprehensive training for ACME-1 employees on the upgraded Power Platform features and functionalities.

Success Metrics

The success of this Power Platform upgrade will be measured by the following metrics:

- **Increased Process Efficiency:** A measurable improvement in the speed and efficiency of key business processes within Sales, Marketing, and Operations.
- **Improved Data Accuracy:** A reduction in data errors and inconsistencies across the Power Platform environment.
- **Higher User Satisfaction:** Positive feedback from ACME-1 employees regarding the usability, functionality, and overall value of the upgraded Power Platform. Surveys and feedback sessions will assess user satisfaction.

Proposed Solution and Architecture

This section outlines Docupal Demo, LLC's proposed solution for upgrading ACME-1's Power Platform environment. Our approach focuses on a seamless transition, enhanced functionality, and robust integration with existing systems.

Upgrade Approach

We recommend a phased rollout to minimize disruption and ensure a smooth transition. This approach involves the following stages:



1. **Assessment and Planning:** A thorough review of your current Power Platform environment, including identifying dependencies, customizations, and potential risks.
2. **Development and Testing:** Building and testing the upgraded platform in a separate environment. This will allow us to validate functionality and address any issues before deployment.
3. **Pilot Deployment:** Deploying the upgraded platform to a small group of users for initial feedback and validation.
4. **Full Deployment:** Rolling out the upgraded platform to all users.
5. **Post-Deployment Support:** Providing ongoing support and monitoring to ensure the upgraded platform is running smoothly.

New Capabilities

The upgraded Power Platform will introduce several new capabilities, including:

- **AI-Powered Automation:** Leverage AI to automate repetitive tasks, improve decision-making, and enhance productivity.
- **Enhanced Data Analytics:** Gain deeper insights into your data with advanced analytics and reporting tools.
- **Improved User Interface:** A modern and intuitive user interface that improves user experience and adoption.

Integration

The upgraded platform will seamlessly integrate with ACME-1's existing systems, including:

- **CRM:** Integrate with your CRM system to provide a unified view of customer data and interactions.
- **ERP:** Connect to your ERP system to streamline business processes and improve data accuracy.
- **Legacy Systems:** Integrate with legacy systems to ensure data consistency and avoid data silos.

Technical Architecture

The upgraded Power Platform will be based on a cloud-based architecture with secure data connections.



- **Cloud-Based:** The platform will be hosted in the cloud, providing scalability, reliability, and security.
- **Secure Data Connections:** All data connections will be secured with encryption and access controls to protect sensitive information.
- **Scalable:** The platform can be scaled to meet the growing needs of ACME-1.

Implementation Plan and Timeline

The following outlines the plan to upgrade ACME-1's Power Platform environment. It details the steps, resources, and timeline required for a successful update.

Project Phases

The upgrade project is divided into five key phases:

1. **Project Kickoff:** This phase includes initial meetings, defining project scope, and assembling the project team.
2. **Environment Setup:** A dedicated test environment will be configured to mirror ACME-1's production environment.
3. **Testing:** Rigorous testing will be conducted in the test environment to identify and resolve any issues.
4. **Deployment:** The updated Power Platform will be deployed to ACME-1's production environment using a phased rollout approach.
5. **User Training:** Comprehensive training will be provided to ACME-1's users to ensure they can effectively use the upgraded platform.

Roles and Responsibilities

Successful execution requires clearly defined roles:

- **Project Manager (Docupal Demo, LLC):** Responsible for overall project planning, execution, and communication.
- **Developers (Docupal Demo, LLC):** Responsible for performing the technical upgrade and resolving any technical issues.
- **Testers (Docupal Demo, LLC & ACME-1):** Responsible for testing the upgraded platform and providing feedback.
- **Trainers (Docupal Demo, LLC):** Responsible for developing and delivering user training.



Detailed Steps

1. Project Kickoff (Week 1):

- Hold a kickoff meeting with ACME-1 to confirm project goals and expectations.
- Finalize the project plan and timeline.
- Assign roles and responsibilities.

2. Environment Setup (Week 2-3):

- Provision a dedicated test environment.
- Migrate a copy of ACME-1's production data and configurations to the test environment.
- Verify the integrity of the test environment.

3. Testing (Week 4-6):

- Conduct functional testing to ensure all features are working as expected.
- Perform user acceptance testing (UAT) with ACME-1's key users.
- Identify and document any issues or bugs.
- Resolve any identified issues and retest.

4. Deployment (Week 7-8):

- Develop a detailed deployment plan, including rollback procedures.
- Perform a full backup of ACME-1's production environment.
- Deploy the upgraded Power Platform to the production environment during off-peak hours.
- Monitor the system closely after deployment to ensure stability.

5. User Training (Week 9-10):

- Develop training materials tailored to ACME-1's users.
- Conduct training sessions for all users.
- Provide ongoing support and answer any questions.

Risk Mitigation

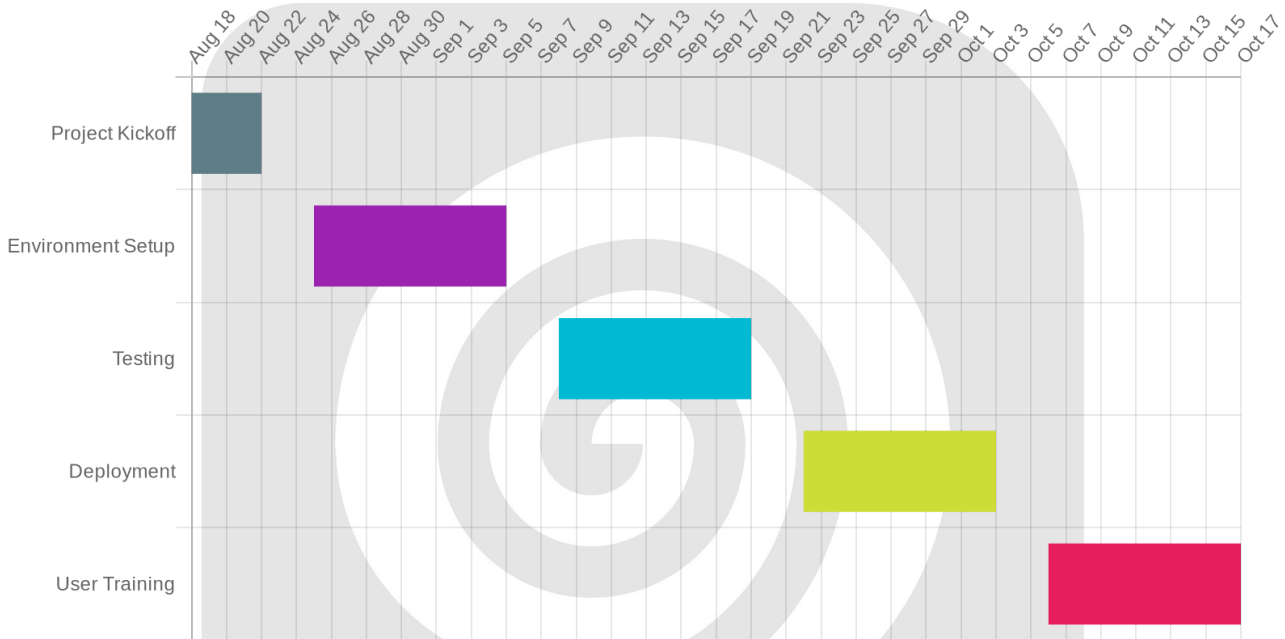
Potential risks and our mitigation strategies:



- **Data Loss:** Comprehensive backups will be performed before any changes are made to the production environment.
- **System Downtime:** The deployment will be scheduled during off-peak hours to minimize disruption.
- **User Resistance:** User training and clear communication will be provided to address any concerns.

Timeline

The estimated timeline for the upgrade is 10 weeks.



Governance, Security, and Compliance

This section outlines the governance frameworks, security enhancements, and compliance considerations that will be implemented with the Power Platform upgrade for ACME-1. Docupal Demo, LLC is committed to ensuring a secure and compliant environment for your Power Platform deployment.



Data Governance

Following the upgrade, platform usage will be governed by comprehensive data governance policies. These policies will define data ownership, access rights, and data lifecycle management. ACME-1 will be able to manage and control data within the Power Platform environment effectively. We will work with ACME-1 to tailor these policies to your specific business needs. Usage guidelines will also be established to promote responsible and efficient use of the platform's resources.

Security Protocols

Data security and user access will be managed through robust security protocols. Role-based access control (RBAC) will be implemented to ensure that users only have access to the data and functionalities necessary for their roles. Data encryption will be utilized both in transit and at rest to protect sensitive information. Regular security audits will be conducted to identify and address potential vulnerabilities. This proactive approach will help maintain a strong security posture and minimize risks.

Compliance Standards

ACME-1's Power Platform environment will adhere to relevant compliance standards, including GDPR and CCPA. The upgraded platform will be configured to support data privacy requirements and provide tools for managing consent and data subject rights. Docupal Demo, LLC will provide guidance and support to help ACME-1 meet its compliance obligations. This includes documentation and training on how to use the platform in a compliant manner. We will assist ACME-1 in maintaining compliance with evolving regulations.

Cost-Benefit and ROI Analysis

This section details the costs, benefits, and return on investment (ROI) expected from upgrading ACME-1's Power Platform. We have analyzed both the tangible and intangible impacts of this upgrade.



Upgrade Costs

The estimated cost for the Power Platform upgrade is \$75,000. This includes all necessary resources and services for a seamless transition.

Tangible Benefits

The Power Platform upgrade offers several tangible benefits for ACME-1. These benefits directly contribute to financial improvements.

- **Reduced Operational Costs:** The upgrade streamlines processes, automating tasks, and improving efficiency.
- **Increased Sales:** Improved data insights and customer engagement tools should drive higher sales.

Intangible Benefits

The Power Platform upgrade also offers significant intangible benefits. These benefits improve employee satisfaction and customer loyalty.

- **Improved Employee Morale:** A modern, efficient platform makes daily tasks easier and more enjoyable.
- **Enhanced Customer Satisfaction:** Better tools for customer service and engagement lead to happier customers.

Return on Investment (ROI)

We project that ACME-1 will realize a return on its investment within 12-18 months. This is based on the anticipated operational cost reductions and sales increases. The improved efficiency and data insights will contribute to this rapid ROI.

Financial Summary

The following table summarizes the projected costs and benefits over a three-year period.

Item	Year 1	Year 2	Year 3
Upgrade Cost	\$75,000	\$0	\$0
Reduced Operational Costs	\$30,000	\$40,000	\$50,000



Item	Year 1	Year 2	Year 3
Increased Sales	\$50,000	\$75,000	\$100,000
Total Benefit	\$80,000	\$115,000	\$150,000

Cost vs. Benefits Chart

The following bar chart visually compares the upgrade costs with the projected benefits over three years.

Training and Change Management

Effective training and change management are critical for the successful adoption of the upgraded Power Platform. Docupal Demo, LLC will employ a comprehensive strategy to ensure ACME-1 users are well-prepared and supported throughout the transition.

User Training

We will provide ACME-1 users with multiple training resources to facilitate a smooth transition to the upgraded platform. These resources will include:

- **Online Training Modules:** Self-paced online modules will cover all new features and functionalities. These modules will be accessible anytime, allowing users to learn at their own speed.
- **Workshops:** Interactive workshops will provide hands-on experience with the upgraded Power Platform. These sessions will be tailored to specific user roles and needs within ACME-1.
- **User Guides:** Detailed user guides will serve as a reference for users as they navigate the upgraded platform. These guides will include step-by-step instructions and troubleshooting tips.

Change Management Strategies

Docupal Demo, LLC will implement proactive change management strategies to minimize disruption and maximize user adoption:



- **Communication:** Regular communication will keep ACME-1 users informed about the upgrade progress, new features, and training opportunities. Communication channels will include email updates, newsletters, and team meetings.
- **Support:** Dedicated support channels will be available to address user questions and concerns. This includes a help desk, online forums, and direct access to Docupal Demo, LLC experts.

Adoption Measurement and Encouragement

To ensure successful adoption of the upgraded Power Platform, we will track usage, collect feedback, and implement incentives.

- **Usage Tracking:** We will monitor platform usage to identify areas where users may need additional support or training.
- **Feedback Collection:** Regular feedback surveys and focus groups will gather user input on their experience with the upgraded platform. This feedback will inform ongoing improvements and support efforts.
- **Incentives:** We will implement incentives to encourage users to actively engage with the new platform and its features. These incentives may include recognition programs or gamified challenges.

Migration and Data Strategy

Our approach to migrating and upgrading your Power Platform environment focuses on a phased implementation to minimize disruption to your business operations. We prioritize data integrity throughout the entire process, and have thorough rollback and contingency plans in place.

Phased Migration Approach

We will execute a phased migration. This approach allows us to move workloads and data in manageable stages. It also allows us to validate each phase before moving on to the next, reducing overall risk. This approach minimizes downtime for ACME-1.

Ensuring Data Integrity

Data integrity is critical. We will implement a multi-faceted strategy including:



- **Data Validation:** Before migration, we will validate your existing data to identify any inconsistencies or errors.
- **Data Cleansing:** We will cleanse the data to correct errors and ensure consistency.
- **Data Verification:** After migration, we will rigorously verify the migrated data against the original data to confirm accuracy and completeness.

Rollback and Contingency Plans

We will implement several layers of protection to address unforeseen issues.

- **Full System Backup:** Before initiating any migration activities, we will create a full backup of your existing Power Platform environment. This backup serves as the foundation for our rollback plan.
- **Rollback Procedures:** We have well-defined rollback procedures. These procedures enable us to revert to the previous environment quickly if issues arise during the migration.
- **Testing Environment:** We will conduct thorough testing in a separate testing environment before migrating to your production environment. This testing helps to identify and resolve potential problems before they impact your live systems.

About Us

Docupal Demo, LLC, based in Anytown, California, is pleased to present this Power Platform Update/Upgrade Proposal to Acme, Inc (ACME-1).

Our Expertise

We are a United States based company with extensive experience in Power Platform implementations. Our commitment is to provide customized solutions that meet your specific business needs.

Proven Track Record

Docupal Demo, LLC has a proven track record of successful Power Platform projects for clients similar to ACME-1. Our team of certified consultants ensures a smooth and efficient upgrade process. We differentiate ourselves through our deep



understanding of the Power Platform and our dedication to delivering solutions that drive tangible business value.

Conclusion and Next Steps

This proposal outlines how Docupal Demo, LLC can assist ACME-1 in updating and upgrading its Power Platform environment. This upgrade offers significant benefits, including enhanced performance, improved security, and access to the latest features and capabilities. The proposed solutions are designed to align with ACME-1's specific business needs and objectives.

Immediate Actions

To move forward, we recommend scheduling a kickoff meeting. During this meeting, we will discuss project timelines, roles, and responsibilities in detail. We will also finalize the project plan and address any initial questions.

Stakeholder Requirements

To ensure a smooth and successful implementation, we require access to ACME-1's systems, key personnel, and relevant requirements documentation. These resources will enable our team to effectively assess the current environment and develop tailored upgrade strategies.

Communication Plan

Docupal Demo, LLC is committed to providing regular status updates, progress reports, and demonstrations throughout the project lifecycle. This transparent communication strategy will keep ACME-1 informed of our progress and allow for timely feedback and adjustments.

