

Table of Contents

Executive Summary	3
Key Benefits	3
Objectives	3
Current Environment Assessment	3
Key Pain Points and Inefficiencies	3
User Adoption and Engagement	4
Data Analysis and Insights	4
Power Platform Usage by Department	4
Proposed Optimization Strategy	4
Power Apps Enhancements	4
Power Automate Optimization	5
Power BI Dashboard Improvements	5
Power Virtual Agents Enhancement	5
AI and Automation Integration	5
Security and Compliance Measures	5
Efficiency Gains Forecast	6
Business Impact and ROI Analysis	6
Improved Efficiency and Reduced Costs	6
Quantitative ROI Projections	7
Project Timeline and Milestones	7
Technical Architecture and Integration	8
Solution Architecture	8
Integration with Existing Systems	8
Data Security	8
Implementation Plan and Timeline	9
Project Phases	9
Resource Allocation	9
Timeline and Milestones	10
Risks and Mitigation	10
Change Management and Training	11
User Adoption Strategy	11
Training Programs	11
Stakeholder Engagement	11



About Us	12
Our Expertise	12
Differentiated Approach	12
Case Studies and Portfolio	12
Streamlined Invoice Processing for Contoso	13
Automated Lead Qualification for AdventureWorks	13
Quantifiable Benefits Delivered	13
Conclusion and Next Steps	13
Immediate Actions	14
Approval and Kickoff	14



Executive Summary

This proposal outlines a plan to optimize Acme, Inc's Power Platform environment. Our goal is to enhance efficiency, reduce costs, and improve user experience. We aim to boost productivity across your organization.

Key Benefits

The optimization efforts will deliver several key benefits to ACME-1. These include increased efficiency through automation, reduced manual effort via streamlined processes, and better data insights for improved decision-making. Enhanced user satisfaction is also a primary focus.

Objectives

Our main objectives are to streamline processes and provide better data insights. We will focus on increasing overall productivity while reducing operational costs. The proposed solution directly addresses the needs of the IT Department, Business Unit Managers, End Users, Compliance Officers, and Executive Sponsors.

Current Environment Assessment

ACME-1 currently uses several components of the Power Platform. These include Power Apps, Power Automate, Power BI, and Power Virtual Agents. Our assessment, based on available data and user feedback, reveals both strengths and areas for improvement.

Key Pain Points and Inefficiencies

ACME-1 faces challenges related to manual data entry across departments. Approval processes are often slow, hindering overall efficiency. The company also struggles with a lack of real-time insights, impacting decision-making. Disconnected systems further compound these issues, creating data silos and process bottlenecks.



User Adoption and Engagement

ACME-1 actively tracks user adoption and engagement. Measurement methods include app usage statistics, user feedback surveys, and automated task completion rates. These metrics provide valuable insights into how employees interact with Power Platform solutions.

Data Analysis and Insights

We analyzed data from the Power Platform Admin Center logs. Application usage data and user feedback forms were also reviewed. This data supports our understanding of the current environment and helps identify areas for optimization.

Power Platform Usage by Department

The following chart illustrates Power Platform usage across different departments within ACME-1. It highlights areas where usage is high and areas where there is room for growth.

Proposed Optimization Strategy

Our proposed strategy focuses on enhancing ACME-1's Power Platform environment to improve efficiency, security, and overall user experience. The implementation will be completed within an estimated 12-week timeframe.

Power Apps Enhancements

We will focus on improving the user interface (UI) and user experience (UX) of existing Power Apps. We will add new features based on ACME-1's specific needs. This includes streamlining navigation, improving data input methods, and ensuring mobile responsiveness.



Power Automate Optimization

Our team will optimize existing Power Automate workflows to reduce errors and improve processing times. We'll implement robust error handling mechanisms to minimize disruptions and ensure data integrity. New workflows will be developed to automate repetitive tasks, freeing up ACME-1 employees for more strategic activities.

Power BI Dashboard Improvements

We will enhance ACME-1's Power BI dashboards and reports to provide more insightful data visualization. This includes creating interactive dashboards, adding new metrics, and ensuring data accuracy. We will also provide training to ACME-1 personnel on how to effectively use these enhanced dashboards.

Power Virtual Agents Enhancement

We plan to improve the accuracy and expand the knowledge base of ACME-1's Power Virtual Agents. This involves refining the chatbot's natural language processing capabilities and adding new topics to address a wider range of user inquiries. The aim is to provide faster and more accurate support to both internal and external users.

AI and Automation Integration

We propose integrating AI capabilities into ACME-1's Power Platform environment to automate key processes. This includes:

- **Intelligent Document Processing:** Automating the extraction of data from documents, reducing manual data entry.
- **Automated Data Validation:** Implementing rules to automatically validate data, ensuring data quality and consistency.
- **AI-Powered Recommendations:** Providing AI-driven recommendations to users, improving decision-making.

Security and Compliance Measures

Maintaining security and compliance is a priority. The following measures will be implemented:

- **Multi-Factor Authentication (MFA):** Requiring users to verify their identity through multiple channels.
- **Data Encryption:** Encrypting sensitive data at rest and in transit.
- **Role-Based Access Control (RBAC):** Limiting user access to only the data and resources they need.
- **Compliance Monitoring:** Continuously monitoring the Power Platform environment for compliance violations.

Efficiency Gains Forecast

The following chart illustrates the forecasted efficiency gains over time post optimization, measured by time saved on key processes.

Business Impact and ROI Analysis

This section outlines the anticipated business impact and return on investment (ROI) that Acme, Inc (ACME-1) can expect from optimizing its Power Platform environment. Our analysis focuses on key performance indicators (KPIs) directly influenced by the proposed improvements. We project significant gains in process efficiency, user satisfaction, and overall cost-effectiveness.

Improved Efficiency and Reduced Costs

The optimization of ACME-1's Power Platform will lead to a measurable reduction in process completion time. Streamlined workflows and automated tasks will minimize manual intervention, directly translating to lower operational costs. We anticipate a decrease in error rates due to improved data validation and standardized processes. This will minimize rework and improve data accuracy.

We will measure cost savings through a detailed analysis of reduced manual labor hours. Optimization will allow for better resource allocation, focusing employee efforts on higher-value activities. Increased sales conversion rates, resulting from more efficient customer engagement processes within the Power Platform, will also contribute to revenue enhancement.



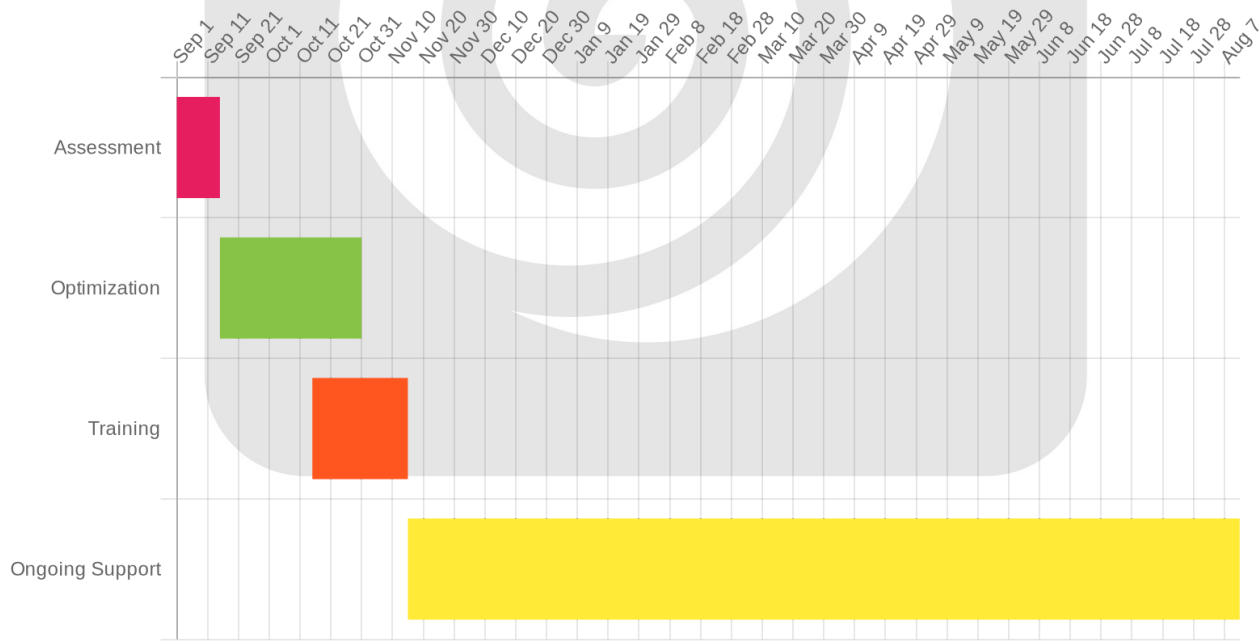
Quantitative ROI Projections

Our ROI projections are based on ACME-1’s current operational costs and the time spent on manual tasks. We will track and measure efficiency gains resulting from the Power Platform optimization. We expect a substantial return on investment within the first year, with continued benefits accruing over the long term.

Metric	Current State	Projected Improvement
Process Completion Time	X minutes	Y% Reduction
User Satisfaction Score	Z	A% Increase
Error Rate	B%	C% Reduction
Manual Labor Costs	\$D	E% Reduction
Sales Conversion Rate	F%	G% Increase

Project Timeline and Milestones

The following Gantt chart illustrates the project timeline, key milestones, and expected benefits realization:



Technical Architecture and Integration

Our proposed Power Platform optimization will integrate seamlessly within ACME-1's existing technology landscape. This includes a strong focus on data security and adherence to industry best practices.

Solution Architecture

The solution leverages the core components of the Microsoft Power Platform, including Power Apps, Power Automate, and Power BI. These components will be configured to interact with ACME-1's Dynamics 365 Sales and Marketing modules. This will allow for a unified and streamlined data flow across the organization.

The Power Apps will provide user-friendly interfaces for data input and process management. Power Automate will automate workflows, reducing manual tasks and improving efficiency. Power BI will deliver insightful data visualizations and reports, aiding in informed decision-making.

Integration with Existing Systems

A key aspect of this optimization is the seamless integration with ACME-1's existing Dynamics 365 environment. Data connectors will be used to establish secure and reliable connections between the Power Platform and Dynamics 365. This will ensure that data flows smoothly between the systems, eliminating data silos and improving data accuracy. The integration will primarily focus on the Sales and Marketing modules, enabling improved lead management, customer engagement, and sales performance. We will configure the solution to minimize any disruption to ACME-1's current operations.

Data Security

Data security is paramount. We will implement robust security protocols to protect ACME-1's sensitive information. This includes data encryption both at rest and in transit. Regular security audits will be conducted to identify and address any potential vulnerabilities. Our approach is fully compliant with relevant industry standards and regulations. We will also work with ACME-1's IT team to ensure that the solution aligns with their existing security policies and procedures. Access to the Power Platform environment will be restricted to authorized personnel only.



Implementation Plan and Timeline

Our approach to optimizing your Power Platform environment at ACME-1 involves a phased implementation, ensuring minimal disruption and maximum value delivery. Key phases include requirements gathering, solution design, development, testing, deployment, and user training.

Project Phases

1. **Requirements Gathering:** We will collaborate with ACME-1 to fully understand your current Power Platform usage, pain points, and business objectives.
2. **Solution Design:** Based on the gathered requirements, Docupal Demo, LLC will architect an optimized Power Platform solution, including specific improvements to your apps, flows, and data integrations.
3. **Development:** Our Power Platform developers will implement the solution design, building and configuring the necessary components.
4. **Testing:** Thorough testing will be conducted to ensure the solution functions as expected and meets ACME-1's requirements.
5. **Deployment:** We will carefully deploy the optimized Power Platform environment to minimize any downtime or disruption to your business operations.
6. **User Training:** Docupal Demo, LLC will provide comprehensive training to ACME-1 users to ensure they can effectively utilize the optimized Power Platform environment.

Resource Allocation

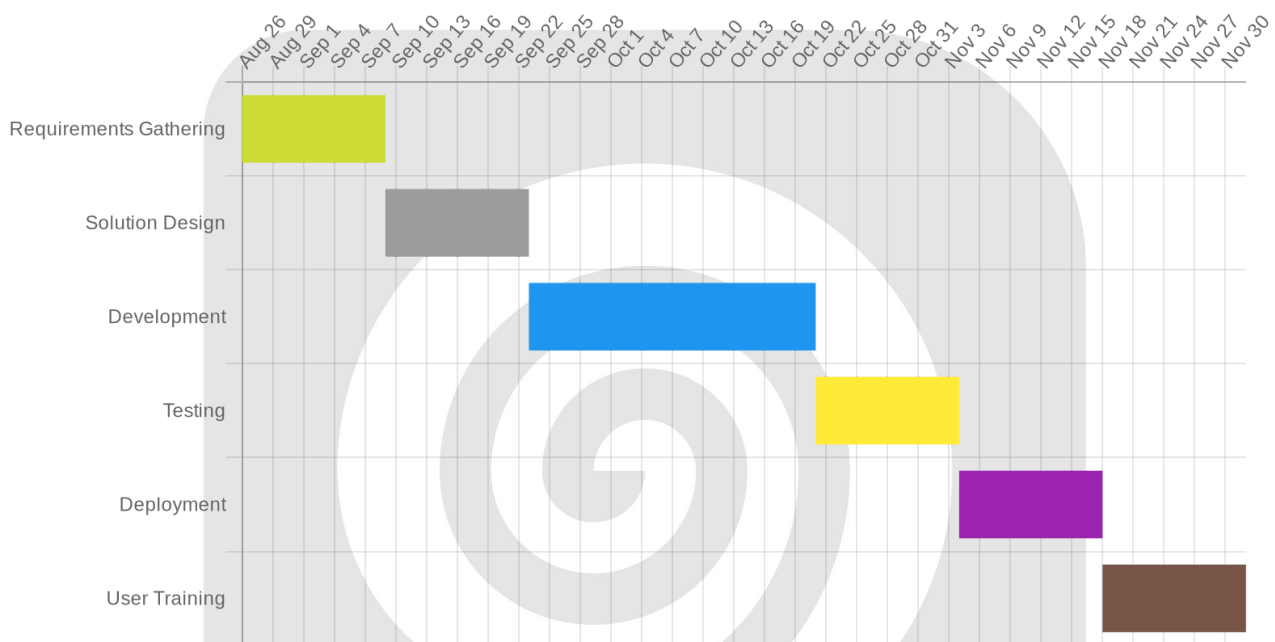
Each phase will involve dedicated resources. A Project Manager will oversee the entire implementation. Power Platform Developers will handle the technical build. Business Analysts will facilitate requirements gathering and solution design. IT Support will assist with deployment and ongoing maintenance.

Timeline and Milestones

The estimated project timeline is detailed below. We are committed to delivering the optimized Power Platform environment within the agreed-upon timeframe.



Task	Start Date	End Date
Requirements Gathering	2025-08-26	2025-09-09
Solution Design	2025-09-09	2025-09-23
Development	2025-09-23	2025-10-21
Testing	2025-10-21	2025-11-04
Deployment	2025-11-04	2025-11-18
User Training	2025-11-18	2025-12-02



Risks and Mitigation

We recognize potential risks during implementation. These include data migration issues, user resistance to change, and integration challenges. To mitigate these risks, we will implement thorough planning, comprehensive user training programs, and robust testing protocols.

Change Management and Training

Effective change management and comprehensive training are critical for the successful adoption of the optimized Power Platform at ACME-1. Our approach focuses on clear communication, robust training programs, and ongoing support to ensure a smooth transition and high user adoption.

User Adoption Strategy

We will implement a multi-faceted strategy to drive user adoption. This includes:

- **Early Communication:** Regular email updates will keep users informed about the optimization progress, new features, and upcoming training opportunities.
- **Project Status Meetings:** We will conduct regular project status meetings with key stakeholders to provide updates, gather feedback, and address any concerns.
- **Dedicated Communication Channels:** We will establish dedicated communication channels, such as a Microsoft Teams channel or a SharePoint site, to facilitate easy access to information and support.

Training Programs

To ensure users are proficient in using the optimized Power Platform, we will provide a range of training options:

- **Online Training Modules:** Self-paced online training modules will be available for users to learn at their own convenience. These modules will cover all key features and functionalities of the updated platform.
- **Live Webinars:** Interactive live webinars will provide users with the opportunity to learn from experts and ask questions in real-time.
- **Hands-on Workshops:** Hands-on workshops will offer practical experience using the new features in a supported environment. These workshops will be tailored to different user roles and skill levels.

Stakeholder Engagement

Engaging stakeholders throughout the optimization process is essential for its success. We will:



- **Identify Key Stakeholders:** We will work with ACME-1 to identify key stakeholders across different departments and roles.
- **Gather Feedback:** We will actively solicit feedback from stakeholders through surveys, interviews, and focus groups. This feedback will be used to refine the optimization plan and training programs.
- **Provide Ongoing Support:** A dedicated support team will be available to answer questions, troubleshoot issues, and provide ongoing assistance to users. A ticketing system will be implemented to track and manage support requests efficiently. Regular feedback sessions will be conducted to continuously improve the user experience and address any emerging needs.

About Us

Docupal Demo, LLC is a United States-based company located at 23 Main St, Anytown, CA 90210. We focus on delivering impactful business outcomes through expert Power Platform optimization. We understand that ACME-1 has limited experience with Power Platform beyond basic usage. Our approach is built on a proven methodology and deep expertise.

Our Expertise

We specialize in helping organizations like ACME-1 maximize their Power Platform investment. Our focus extends beyond technical implementation. We emphasize how the Power Platform can drive tangible business improvements.

Differentiated Approach

Our approach stands out due to our commitment to business outcomes. We use our proven methodology and our team's deep Power Platform expertise to achieve those outcomes. We tailor our optimization strategies to ACME-1's specific needs and goals.

Case Studies and Portfolio

Our experience demonstrates a proven track record of successfully optimizing Power Platform implementations for diverse businesses. We deliver tangible results, maximizing your return on investment.



Streamlined Invoice Processing for Contoso

We streamlined invoice processing for Contoso using Power Automate and Power Apps. The solution automated data extraction, validation, and approval workflows. Contoso realized a 30% reduction in processing time. Errors decreased, and staff could focus on higher-value tasks.

Automated Lead Qualification for AdventureWorks

AdventureWorks sought to improve its lead conversion rates. We implemented a Power Platform solution using AI Builder and Power Automate. It automatically qualified leads based on pre-defined criteria. The system then routed qualified leads to the appropriate sales team. AdventureWorks experienced a 20% increase in lead conversion rates. The sales team was equipped to prioritize promising opportunities.

Quantifiable Benefits Delivered

Our optimization strategies consistently deliver significant, measurable improvements:

- Reduced processing times.
- Increased conversion rates.
- Cost savings.

These benefits translate directly into improved efficiency, increased revenue, and a stronger bottom line for our clients. We are confident that we can deliver similar results for ACME-1.

Conclusion and Next Steps

Docupal Demo, LLC, has presented this proposal to ACME-1 outlining how we can optimize your Power Platform environment. Our team is confident that our expertise and proven methodologies will deliver significant improvements to your business processes. We believe we can help ACME-1 unlock the full potential of your Power Platform investment.



Immediate Actions

We recommend a detailed assessment of your current Power Platform usage. This assessment will identify key areas needing improvement. We will analyze your existing apps, flows, and data connections to pinpoint inefficiencies and opportunities for optimization.

Approval and Kickoff

To move forward, ACME-1 should review this proposal. Following the review, please schedule a kickoff meeting with our team. This meeting will allow us to discuss project timelines, resource allocation, and specific goals. It will also be important to assign internal resources who will collaborate with us throughout the optimization process.

