

# Table of Contents

<b>Executive Summary</b>	<b>3</b>
Project Overview	3
Key Benefits	3
Impacted Stakeholders	3
<b>Current State Assessment</b>	<b>3</b>
Performance Bottlenecks	4
Limited Accessibility and Features	4
Security Considerations	4
<b>Proposed Solution and Features</b>	<b>4</b>
Tableau 2023.3 Implementation	5
Key Features and Improvements	5
Impact on User Productivity and System Performance	5
<b>Cost and Benefit Analysis</b>	<b>6</b>
Cost Breakdown	6
Quantifiable Benefits and ROI	6
Financial Alignment	6
<b>Implementation Plan and Timeline</b>	<b>7</b>
Project Phases	7
Rollout Approach	7
Testing and Quality Assurance	8
User Training	8
Deployment and Support	8
<b>Risk Assessment and Mitigation</b>	<b>8</b>
Potential Risks	9
Mitigation Strategies	9
<b>Stakeholder Roles and Responsibilities</b>	<b>10</b>
Key Roles	10
Responsibilities and Communication	10
<b>Technical Requirements and Dependencies</b>	<b>10</b>
Infrastructure Requirements	11
Software Dependencies	11
Security Considerations	11
<b>Conclusion and Next Steps</b>	<b>11</b>



Required Approvals .....	11
Implementation Readiness .....	11



# Executive Summary

## Project Overview

Docupal Demo, LLC presents this proposal to ACME-1 for a comprehensive Tableau update or upgrade. This initiative aims to enhance your organization's data analytics capabilities through improved performance, strengthened security, and access to new features within the Tableau environment.

## Key Benefits

The proposed update/upgrade is expected to deliver significant business benefits. ACME-1 can anticipate increased efficiency in data processing and analysis, leading to faster insights. Furthermore, the new features will empower better data-driven decisions across various departments. Improved reporting capabilities will provide clearer and more actionable information to stakeholders.

## Impacted Stakeholders

This project will directly impact several key stakeholder groups within ACME-1. Data analysts will benefit from enhanced tools and performance. Business users will gain access to improved reporting and data visualization. The IT department will see improvements in system security and maintainability. Executive leadership will receive more timely and insightful data for strategic decision-making.

## Current State Assessment

Acme, Inc. currently utilizes Tableau Server 2021.1 and Tableau Desktop 2021.1 for its data visualization and analytics needs. While this version has served ACME-1 adequately, several challenges have emerged that necessitate an update or upgrade to a more current version. These challenges impact both technical performance and user experience.



## Performance Bottlenecks

One of the primary concerns is slow dashboard loading times. This latency hinders efficient data analysis and decision-making. Users are experiencing delays when accessing and interacting with dashboards, which reduces productivity and can lead to frustration.

*This chart shows average dashboard loading times (in seconds) for frequently used dashboards.*

## Limited Accessibility and Features

The current Tableau 2021.1 environment presents limitations in mobile access. The lack of optimized mobile capabilities restricts users from accessing critical data insights on their mobile devices, impacting on-the-go decision-making. Furthermore, users are finding it difficult to use new Tableau features, likely due to a lack of familiarity or training resources. This indicates a potential need for user training and support to maximize the value of existing and new features.

## Security Considerations

Security protocols in the 2021.1 version are now considered outdated. Maintaining a secure environment is crucial for protecting sensitive data and ensuring compliance with industry regulations. Upgrading to a more recent version of Tableau will provide enhanced security features and address potential vulnerabilities.

## Proposed Solution and Features

Docupal Demo, LLC proposes an upgrade to Tableau Server and Tableau Desktop, both to version 2023.3, for ACME-1. This upgrade is designed to provide ACME-1 with improved data handling, better team collaboration, and more powerful analytical tools. The upgrade directly addresses current limitations and positions ACME-1 for enhanced data-driven decision-making.

## Tableau 2023.3 Implementation

We recommend a full deployment of Tableau 2023.3 across ACME-1's relevant departments. This includes upgrading the Tableau Server infrastructure and deploying the latest Tableau Desktop version to all users. This unified approach



ensures everyone benefits from the newest features and improvements.

## Key Features and Improvements

The Tableau 2023.3 upgrade offers several key enhancements:

- **Improved Data Connectivity:** The new version offers broader and more efficient connections to various data sources. This reduces the time spent accessing and preparing data.
- **Enhanced Collaboration Tools:** Tableau 2023.3 improves how teams work together. New features make it easier to share dashboards, provide feedback, and co-author reports.
- **Advanced Analytics Features:** This upgrade introduces more advanced analytical capabilities. These include predictive analytics, improved statistical functions, and more flexible data modeling.
- **Performance Improvements:** Tableau 2023.3 includes under-the-hood optimizations. These lead to faster loading times, quicker interactions, and a more responsive user experience.

## Impact on User Productivity and System Performance

We expect the Tableau 2023.3 upgrade to boost user productivity. The faster performance and improved features will allow users to complete tasks more efficiently.

While the upgrade should improve overall system performance, we will closely monitor the system during and after deployment. We will apply optimization strategies to minimize any potential negative impacts. These strategies include:

- Optimizing data extracts.
- Tuning server configurations.
- Providing user training on efficient dashboard design.

These steps will help ensure that ACME-1 experiences the full benefits of the Tableau 2023.3 upgrade without disruption.



# Cost and Benefit Analysis

The proposed Tableau update/upgrade represents a strategic investment for ACME-1. This analysis details the associated costs and quantifies the anticipated benefits, demonstrating a clear return on investment (ROI).

## Cost Breakdown

The total estimated cost for this project is \$50,000. This encompasses all aspects of the update/upgrade, including:

- **Licensing:** Costs associated with updated Tableau licenses.
- **Infrastructure:** Any necessary upgrades to hardware or cloud services.
- **Training:** Training for ACME-1 staff on new features and functionalities.
- **Support:** Ongoing support and maintenance costs.

## Quantifiable Benefits and ROI

The Tableau update/upgrade is projected to yield significant quantifiable benefits for ACME-1. We forecast \$20,000 in cost savings due to increased efficiency in data analysis and reporting. Furthermore, the upgrade is expected to result in a 15% improvement in report generation time. This translates to:

- **Reduced Operational Costs:** Streamlined processes and faster report generation minimize labor hours.
- **Improved Decision-Making:** More timely and accurate data insights empower better business decisions.

## Financial Alignment

This upgrade aligns with ACME-1's approved budget and supports long-term financial goals. By reducing operational expenses and enhancing decision-making capabilities, the upgrade contributes to improved profitability and a stronger competitive advantage. The projected cost savings and efficiency gains demonstrate a positive ROI, making this a financially sound investment for ACME-1.





# Implementation Plan and Timeline

Docupal Demo, LLC will execute the Tableau update/upgrade using a phased approach, ensuring minimal disruption to ACME-1's operations. The project spans approximately nine weeks, from initiation to final deployment. We will proactively manage risks through regular status meetings and a risk assessment matrix.

## Project Phases

1. **Planning (2 weeks):** This initial phase focuses on detailed project planning, environment assessment, and requirement finalization.
2. **Implementation (4 weeks):** The installation and configuration of the Tableau software, along with any necessary data migration activities, will occur during this phase.
3. **Testing & Training (2 weeks):** Thorough testing of the upgraded environment and comprehensive user training will be conducted to ensure a smooth transition.
4. **Deployment (1 week):** The final phase involves deploying the updated Tableau environment to production and providing ongoing support.

## Rollout Approach

Our rollout strategy prioritizes a seamless transition. The process includes:

- **Environment Setup:** Configuring the necessary server and network infrastructure.
- **Software Installation:** Installing the Tableau update/upgrade on the designated servers.
- **Data Migration:** Migrating existing data to the new Tableau environment, ensuring data integrity.
- **User Training:** Providing comprehensive training sessions for ACME-1 users, covering new features and functionalities.

## Testing and Quality Assurance

Rigorous testing is a critical component of our implementation plan. We will conduct unit testing, integration testing, and user acceptance testing (UAT) to validate the functionality and performance of the upgraded Tableau environment. Any identified issues will be promptly addressed and resolved.

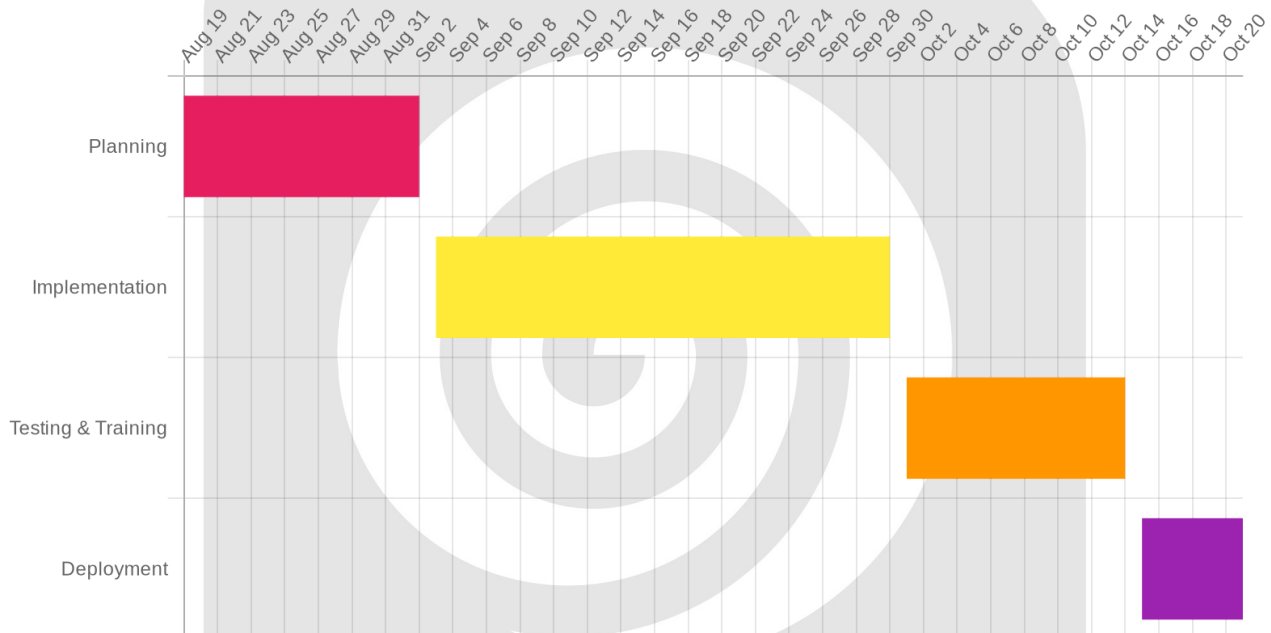


## User Training

Docupal Demo, LLC will provide customized training sessions tailored to ACME-1's specific needs. Training will cover the new features, functionalities, and best practices for utilizing the upgraded Tableau environment effectively. Training materials and ongoing support will also be provided.

## Deployment and Support

The final deployment phase involves migrating the updated Tableau environment to the production environment. Docupal Demo, LLC will provide ongoing support to ACME-1 to ensure a stable and efficient operation.



## Risk Assessment and Mitigation

This section identifies potential risks associated with the Tableau update/upgrade for ACME-1 and outlines mitigation strategies to minimize their impact.

### Potential Risks

Several technical and organizational risks could affect the success of this project:



- **Data Migration Issues:** Moving data to the upgraded Tableau environment might cause errors or data loss.
- **Compatibility Problems:** The new Tableau version might not work seamlessly with ACME-1's existing systems and data sources.
- **User Adoption Challenges:** ACME-1 users may face difficulties adapting to the updated interface or new features, impacting productivity.
- **Data Security Breaches:** Security vulnerabilities during or after the upgrade could expose sensitive data.

## Mitigation Strategies

Docupal Demo, LLC will implement the following strategies to address these potential risks:

- **Data Backup and Recovery:** Before any data migration, a complete backup of ACME-1's Tableau data will be created. A detailed recovery plan will be in place to quickly restore data if issues arise during the migration.
- **Rollback Strategy:** A clear rollback strategy will allow a return to the previous Tableau version if the upgrade causes critical problems. This includes documented steps and resources for a swift and safe reversion.
- **Dedicated Support Team:** Docupal Demo, LLC will provide a dedicated support team to assist ACME-1 users during and after the upgrade. This team will address questions, troubleshoot issues, and provide training to ensure smooth user adoption.
- **Data Encryption and Access Controls:** Data encryption will be used to protect sensitive information during migration and in the upgraded environment. Strict access controls will be enforced to limit data access to authorized personnel only. Security audits will be performed to identify and address potential vulnerabilities.

## Stakeholder Roles and Responsibilities

Effective collaboration is vital for the Tableau update/upgrade project. This section outlines the roles, responsibilities, and communication channels for all stakeholders.



## Key Roles

- **Project Manager (John Doe):** John Doe will oversee the entire project lifecycle. He will manage timelines, resources, and communication. He will also be responsible for risk mitigation.
- **IT Lead (Jane Smith):** Jane Smith will lead the technical aspects of the upgrade. This includes infrastructure setup, software installation, and system integration. She will ensure compatibility and security.
- **Business Analyst (Peter Jones):** Peter Jones will represent the business users. He will gather requirements, test the upgraded system, and provide feedback. He ensures the upgrade meets business needs.

## Responsibilities and Communication

We will use regular status meetings to keep everyone informed. We will also use project management software for task tracking. Weekly progress reports will provide a summary of accomplishments and any potential issues. Docupal Demo, LLC will offer online training modules to ACME-1 users. We will also conduct in-person workshops for hands-on experience. Ongoing support will be available to address any questions or concerns after the upgrade.

## Technical Requirements and Dependencies

The Tableau update/upgrade for ACME-1 necessitates specific infrastructure and system considerations to ensure a smooth transition and optimal performance.

### Infrastructure Requirements

To support the upgraded Tableau environment, ACME-1's server infrastructure will require enhancements. We recommend increasing server capacity to meet the demands of the new Tableau version. This includes upgrading network infrastructure components to facilitate efficient data transfer and access. Minimum specifications for optimal performance include 64GB RAM, an 8-core processor, and SSD storage.



## Software Dependencies

The Tableau upgrade has dependencies on ACME-1's existing software ecosystem. Compatibility testing will be performed against current database systems to guarantee seamless integration. The upgrade process relies on the availability and proper configuration of ACME-1's Active Directory for user authentication and authorization. All existing drivers and connectors will be reviewed and updated to ensure compatibility with the new Tableau version.

## Security Considerations

Security is paramount during the upgrade. Security protocols will be reviewed and updated to align with the latest Tableau security best practices. Access controls and permissions within Tableau will be re-evaluated to ensure alignment with ACME-1's security policies.

## Conclusion and Next Steps

This proposal outlines how upgrading your Tableau environment will improve performance and security. You will also gain access to the latest features. These enhancements are designed to help ACME-1 make more efficient and informed data-driven decisions.

## Required Approvals

To move forward, we require approval of the proposed budget and project plan.

## Implementation Readiness

Before deployment, we will conduct thorough user acceptance testing. This will ensure system stability and that the upgraded environment meets ACME-1's needs. Once testing is complete and confirmed, we can schedule the upgrade.

