

# Table of Contents

<b>Executive Summary</b>	<b>3</b>
Project Goals	3
Expected Benefits	3
Scope and Timeline	3
<b>Project Scope and Objectives</b>	<b>3</b>
Project Scope	4
Project Objectives	4
<b>Migration Strategy and Approach</b>	<b>5</b>
Migration Phases	5
Ensuring Data Integrity and Accuracy	6
Tools and Automation	6
Team Roles and Responsibilities	7
Quality Assurance	7
Migration Timeline and Milestones	7
<b>Current State Analysis</b>	<b>8</b>
Data Volume and Report Complexity	8
Performance Limitations	8
Justification for Migration	9
<b>Risk Assessment and Mitigation</b>	<b>9</b>
Potential Risks	9
Mitigation Strategies	9
Contingency Plans	10
Risk Impact Matrix	10
<b>Cost and Resource Analysis</b>	<b>10</b>
Cost Breakdown	10
Resource Requirements	11
Ongoing Maintenance and Support	11
<b>Implementation Timeline and Milestones</b>	<b>11</b>
Project Phases and Deliverables	12
Timeline	12
Milestones	12
Gantt Chart	13
<b>Stakeholder Engagement and Communication Plan</b>	<b>13</b>



Key Stakeholders and Roles .....	13
Communication Channels and Frequency .....	14
Communication Schedule and Responsibilities .....	14
Feedback Incorporation .....	14
<b>Post-Migration Support and Maintenance .....</b>	<b>15</b>
Training and Documentation .....	15
Ongoing Support .....	15
Performance Monitoring .....	15
<b>Appendices and References .....</b>	<b>15</b>
Appendix A: Glossary of Terms .....	16
Appendix B: Technical Specifications .....	16
Appendix C: Data Integrity Measures .....	16
Appendix D: Risk Management Plan .....	16
Appendix E: Reference Materials .....	17



# Executive Summary

Docupal Demo, LLC proposes a comprehensive migration plan for Acme, Inc's Business Intelligence (BI) environment to Tableau. This migration aims to modernize ACME-1's analytics capabilities, addressing key limitations of their current system.

## Project Goals

The primary goals are to improve performance of reporting and dashboards, enhance scalability to accommodate growing data volumes, and reduce the overall maintenance overhead associated with the existing BI platform.

## Expected Benefits

Post-migration, ACME-1 will experience several key benefits. These include faster report generation, enabling quicker access to critical business insights. The new Tableau environment will also improve data accessibility, empowering users to explore and analyze data more effectively. Furthermore, the migration will enhance self-service analytics capabilities, allowing users to create and customize their own reports and dashboards with minimal IT support.

## Scope and Timeline

The project scope encompasses the migration of all existing reports and dashboards to the Tableau platform. The estimated timeline for completing the migration is six months. This includes data validation, user training, and ongoing support during the transition phase.

# Project Scope and Objectives

This section defines the scope and objectives for migrating ACME-1's business intelligence (BI) environment to Tableau. The migration aims to modernize ACME-1's data analytics capabilities, enhance decision-making processes, and improve overall business performance.



## Project Scope

The project encompasses a complete migration of ACME-1's existing BI infrastructure to Tableau. This includes:

- **BI Platform Replacement:** Replacing the current legacy Business Objects platform with Tableau.
- **Data Integration:** Integrating Tableau with Salesforce to provide a unified view of sales and customer data.
- **Data Source Migration:** Migrating all existing reports and dashboards connected to the following data sources:
  - SQL Server databases
  - Oracle databases
  - Excel spreadsheets
- **Report and Dashboard Migration:** Recreating and optimizing existing reports and dashboards in Tableau, ensuring data accuracy and visual appeal.
- **User Training:** Providing comprehensive training to ACME-1's users on how to effectively use Tableau.
- **System Testing and Validation:** Conducting thorough testing to ensure data integrity and system functionality after the migration.

## Project Objectives

The primary objectives of this Tableau migration are to:

- **Enhance Sales Forecasting:** Improve the accuracy and efficiency of sales forecasting through interactive dashboards and advanced analytics in Tableau.
- **Improve Customer Segmentation:** Enable more effective customer segmentation strategies by leveraging Tableau's data visualization and analytical capabilities.
- **Optimize Inventory Management:** Provide real-time insights into inventory levels and trends, leading to better inventory management decisions.
- **Reduce Reporting Time:** Decrease the time required to generate reports and dashboards, allowing users to access critical information more quickly.
- **Increase Data Accessibility:** Make data more accessible to a wider range of users within ACME-1 through Tableau's user-friendly interface and self-service analytics features.
- **Improve Data-Driven Decision Making:** Foster a data-driven culture within ACME-1 by providing users with the tools and training they need to analyze data and make informed decisions.



- **Ensure Data Integrity:** Maintain the accuracy and consistency of data throughout the migration process, minimizing the risk of data loss or corruption.
- **Seamless Transition:** Ensure a smooth and seamless transition to Tableau with minimal disruption to ACME-1's business operations.
- **Scalability:** Provide ACME-1 with a scalable BI platform that can accommodate future growth and evolving business needs.

By achieving these objectives, ACME-1 will be well-positioned to leverage the full potential of its data assets and gain a competitive advantage in the market.

## Migration Strategy and Approach

Our migration strategy ensures a smooth transition to Tableau. We focus on minimizing disruption and maximizing the value of your data.

### Migration Phases

We will follow a structured five-phase approach:

1. **Assessment:** We begin by thoroughly analyzing your current BI environment. This includes understanding your existing data sources, reports, dashboards, and user base. We identify dependencies and potential challenges.
2. **Planning:** Based on the assessment, we develop a detailed migration plan. This plan outlines the scope, timeline, resource allocation, and risk mitigation strategies. It also includes a communication plan to keep stakeholders informed.
3. **Migration:** This phase involves the actual transfer of data and reports to Tableau. We will use a combination of automated tools and manual processes to ensure accuracy and efficiency. We will use Tableau Content Migration Tool and custom scripting.
4. **Testing:** After the migration, we conduct rigorous testing to validate data integrity and report accuracy. This includes unit testing, integration testing, and user acceptance testing. We will perform parallel testing to compare results with your existing system.



5. **Deployment:** Once testing is complete and successful, we deploy the Tableau environment to your users. We provide training and support to ensure a smooth transition.

## Ensuring Data Integrity and Accuracy

Data integrity is paramount. We will implement several measures to guarantee accuracy:

- **Data Validation:** We will perform thorough data validation checks at each stage of the migration. This includes comparing data counts, verifying data types, and identifying any data discrepancies.
- **Parallel Testing:** We will run parallel tests, comparing the results of reports in Tableau with those from your existing BI system. This ensures that the data is accurately reflected in Tableau.
- **Data Reconciliation:** We will reconcile any data discrepancies that are identified during testing. This involves identifying the root cause of the discrepancy and implementing corrective actions.

## Tools and Automation

We will leverage a range of tools and automation techniques to streamline the migration process:

- **Tableau Content Migration Tool:** This tool helps automate the migration of Tableau workbooks, data sources, and permissions.
- **Custom Scripting:** We will use custom scripting to automate tasks such as data transformation, data cleansing, and data validation.
- **Data Profiling Tools:** These tools help us understand the structure and content of your data, which is essential for accurate migration.

## Team Roles and Responsibilities

Our team will consist of experienced Tableau consultants, data engineers, and project managers. Key roles include:

- **Project Manager:** Responsible for overall project planning, execution, and communication.





- **Tableau Consultant:** Responsible for designing and developing Tableau dashboards and reports.
- **Data Engineer:** Responsible for data extraction, transformation, and loading (ETL) processes.
- **Quality Assurance Analyst:** Responsible for testing and validating data integrity and report accuracy.

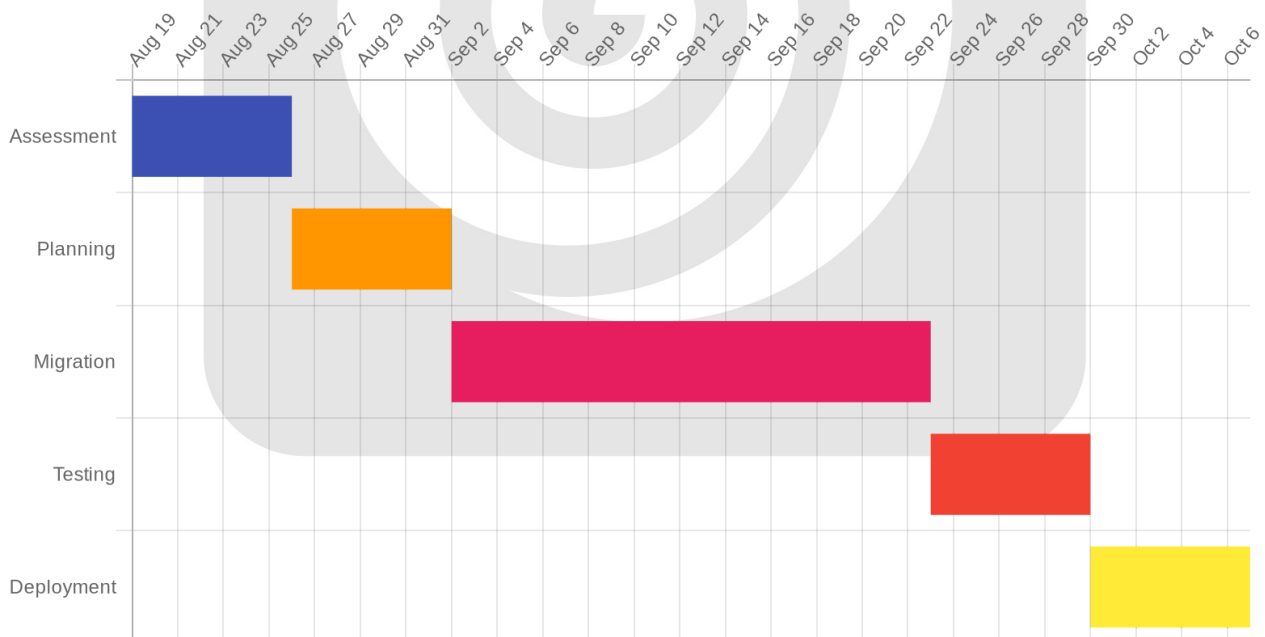
## Quality Assurance

Quality assurance is integrated into every phase of the migration. We will:

- Develop a detailed test plan that covers all aspects of the migration.
- Conduct regular testing throughout the migration process.
- Track and resolve any issues that are identified during testing.
- Obtain sign-off from stakeholders at each phase of the migration.

## Migration Timeline and Milestones

The following is a sample Gantt chart illustrating the project timeline (in weeks) and key milestones:



This timeline is subject to change based on the assessment phase.

# Current State Analysis

ACME-1's current Business Intelligence (BI) environment faces several challenges that impede its ability to effectively leverage data for decision-making. The existing system struggles with scalability, leading to performance bottlenecks as data volumes grow. High maintenance costs further strain resources, diverting them from more strategic initiatives.

## Data Volume and Report Complexity

The current data warehouse holds 5TB of data. The reports are complex, involving intricate calculations and data transformations. This complexity contributes to the system's slow performance and increases the effort required for maintenance and updates.

## Performance Limitations

Report generation times are a significant concern. Currently, it takes an average of 30 minutes to generate a single report. This delay hinders timely access to critical insights and limits the ability of business users to react quickly to changing market conditions. The goal is to reduce report generation time to under 5 minutes, a substantial improvement needed to meet business demands.

## Justification for Migration

The limitations of the current system necessitate a migration to a more robust and scalable BI platform. Tableau offers the potential to address these challenges by providing improved performance, reduced maintenance costs, and enhanced data visualization capabilities. The following chart illustrates the current report generation time compared to the target:

The current system's constraints directly impact ACME-1's operational efficiency and decision-making agility. Migrating to Tableau will provide a modern, high-performance BI environment that empowers users to access and analyze data more effectively.





# Risk Assessment and Mitigation

Migrating ACME-1's BI environment to Tableau involves inherent risks. Docupal Demo, LLC will proactively manage these risks to ensure a smooth and successful transition.

## Potential Risks

We have identified three key risk areas:

- **Data Loss:** Data may be lost or corrupted during the migration process.
- **User Adoption:** Users may resist adopting the new Tableau environment.
- **Integration Issues:** Compatibility problems may arise when integrating Tableau with existing systems.

## Mitigation Strategies

To minimize risk exposure, Docupal Demo, LLC will implement the following strategies:

- **Data Backups:** Comprehensive data backups will be performed before, during, and after the migration. This ensures data can be restored in case of any unforeseen issues.
- **User Training Programs:** Tailored training programs will be developed to help users quickly adapt to Tableau. These programs will cover basic and advanced features, empowering users to effectively utilize the new platform.
- **Phased Rollouts:** A phased rollout approach will be adopted. This involves migrating departments or data sets incrementally, allowing us to identify and address any integration issues early on.

## Contingency Plans

We have developed contingency plans to address critical risks:

- **Rollback Plan:** A dedicated rollback plan is in place. If significant problems occur during migration, we can quickly revert to the original system with minimal data loss.



- **Extended Support Period:** We will provide an extended support period after the migration. This ensures users have access to assistance and troubleshooting resources as they become familiar with Tableau.

## Risk Impact Matrix

The table below shows the Risk Impact Matrix.

Risk	Likelihood	Impact	Mitigation Strategy	Contingency Plan
Data Loss	Medium	High	Data Backups	Rollback Plan
User Adoption	Medium	Medium	User Training Programs	Extended Support Period
Integration Issue	Low	Medium	Phased Rollouts	Extended Support Period

## Cost and Resource Analysis

The Tableau migration project for ACME-1 is projected to cost \$250,000. This figure encompasses all aspects of the migration, from initial setup to ongoing support. The following sections detail the breakdown of these costs and the resources required for successful implementation.

### Cost Breakdown

The total project cost of \$250,000 is divided into four key areas: licensing, manpower, tools, and training.

- **Licensing:** This category covers the cost of Tableau licenses required for ACME-1's users.
- **Manpower:** This includes the salaries and associated costs of the project team.
- **Tools:** This covers the cost of any additional software or utilities needed for the migration process.
- **Training:** This includes the cost of training ACME-1's staff on the new Tableau environment.

## Resource Requirements

Successful migration requires a dedicated team with specific skill sets. The core team will consist of:

- **Tableau Developers:** They will build and migrate dashboards and reports.
- **Data Engineers:** They will ensure data integrity and optimize data pipelines.
- **Project Manager:** Responsible for overall project coordination and execution.
- **Trainers:** They will conduct training sessions for ACME-1's users.

## Ongoing Maintenance and Support

Following the migration, a dedicated support team will provide ongoing maintenance and support. This includes proactive monitoring of the Tableau environment to identify and resolve potential issues. The support team will also be available to answer user questions and provide assistance as needed. This ongoing support ensures the long-term success of the Tableau implementation and maximizes ACME-1's return on investment.

# Implementation Timeline and Milestones

The migration project will be executed in phases, each with specific milestones and deliverables. Progress will be tracked through weekly status reports and milestone reviews with ACME-1 stakeholders.

## Project Phases and Deliverables

The project includes these major phases:

- **Assessment:** A comprehensive analysis of the current BI environment.
  - **Deliverable:** Assessment Report
- **Migration Planning:** Development of a detailed migration strategy.
  - **Deliverable:** Migration Plan
- **Implementation:** Execution of the migration plan, including data migration and dashboard creation.
  - **Deliverable:** Deployed Dashboards

- **Training and Handover:** Training ACME-1 personnel on the new Tableau environment.
  - **Deliverable:** Training Materials

## Timeline

The project is expected to take approximately 6 months from the start date.

Phase	Duration	Start Date	End Date
Assessment	4 weeks	2025-08-19	2025-09-16
Migration Planning	4 weeks	2025-09-17	2025-10-14
Implementation	16 weeks	2025-10-15	2026-02-04
Training and Handover	4 weeks	2026-02-05	2026-03-05

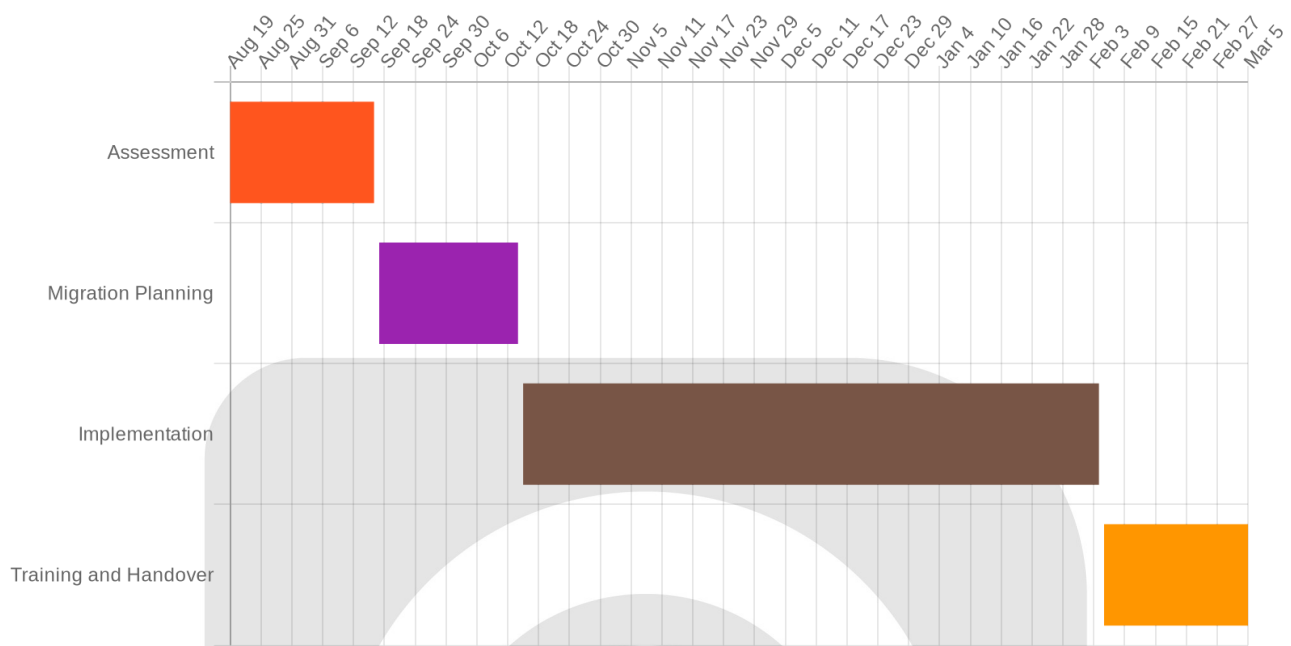
## Milestones

These are the key milestones for the migration:

- **Assessment Completion:** Comprehensive report detailing the current state and migration recommendations. Target Date: 2025-09-16.
- **Migration Plan Approval:** Sign-off on the detailed migration strategy and timeline. Target Date: 2025-10-14.
- **Data Migration Complete:** All data successfully migrated to the Tableau environment. Target Date: 2026-01-21.
- **Dashboard Development Complete:** All key dashboards are developed and tested. Target Date: 2026-02-04.
- **User Training Complete:** ACME-1 users are fully trained on the new Tableau environment. Target Date: 2026-03-05.
- **Project Sign-off:** Final project review and sign-off from ACME-1. Target Date: 2026-03-05.



Gantt Chart



Stakeholder Engagement and Communication Plan

Effective communication and stakeholder engagement are critical for the successful migration of Acme Inc's BI environment to Tableau. Docupal Demo, LLC will ensure all stakeholders are informed and involved throughout the project lifecycle.

Key Stakeholders and Roles

The key stakeholders for this project include:

- **Project Sponsor:** John Smith, responsible for overall project success.
- **Project Manager:** Jane Doe, responsible for managing the project execution.
- **BI Team Lead:** Mike Brown, responsible for the BI team's involvement and knowledge transfer.



## Communication Channels and Frequency

We will use multiple communication channels to keep stakeholders informed:

- **Email:** For regular updates, announcements, and document sharing.
- **Weekly Meetings:** To discuss progress, address concerns, and gather feedback.
- **Dedicated Project Website:** A central repository for project documentation, timelines, and status updates.

## Communication Schedule and Responsibilities

Communication Activity	Frequency	Responsible Party	Audience	Purpose
Project Status Updates	Weekly	Jane Doe	All Stakeholders	Inform on progress, risks, and issues.
Steering Committee Meetings	Bi-weekly	Jane Doe	John Smith, Mike Brown	Discuss key decisions, escalate issues, and provide guidance.
Feedback Sessions	Monthly	Jane Doe	BI Team, Key Users	Gather feedback on the migration process and Tableau implementation.
Training Sessions	As needed	Docupal Demo, LLC	BI Team, End Users	Provide training on Tableau functionality and best practices.

## Feedback Incorporation

Stakeholder feedback will be actively solicited and incorporated into the project plan. Regular meetings and dedicated feedback sessions will provide opportunities for stakeholders to share their insights and concerns. All feedback will be carefully reviewed and addressed, with changes documented and communicated to all stakeholders.

## Post-Migration Support and



# Maintenance

Following the successful migration of your BI environment to Tableau, Docupal Demo, LLC will provide comprehensive support and maintenance services. These services are designed to ensure the stability of your Tableau platform, promote user adoption, and optimize performance.

## Training and Documentation

We will deliver tailored training sessions to both end-users and administrators. These sessions will cover Tableau's core functionalities and best practices. Comprehensive online documentation will also be available, offering step-by-step guidance and troubleshooting tips. We will also offer one-on-one support to address specific user questions and challenges.

## Ongoing Support

Acme, Inc. will have access to our help desk support for timely issue resolution. Our dedicated Tableau support team will be available to address more complex technical issues and provide expert guidance. We are committed to providing prompt and effective support to minimize disruptions and ensure user satisfaction.

## Performance Monitoring

We will continuously monitor the performance of your Tableau Server using built-in monitoring tools. This proactive approach allows us to identify and address potential bottlenecks before they impact users. We will also actively solicit user feedback to identify areas for optimization and improvement, ensuring the Tableau environment meets the evolving needs of ACME-1.

# Appendices and References

## Appendix A: Glossary of Terms

Term	Definition
BI	Business Intelligence



Term	Definition
ETL	Extract, Transform, Load
GDPR	General Data Protection Regulation
CCPA	California Consumer Privacy Act
Tableau Server	Tableau's enterprise platform for hosting, sharing, and collaborating on workbooks.
Workbook	A file containing one or more dashboards, worksheets, and stories.

## Appendix B: Technical Specifications

- **Server Sizing:** Specifications for the Tableau Server environment, including CPU, memory, and storage requirements, will be determined during the assessment phase.
- **Network Configuration:** Detailed network settings to ensure optimal performance and security for Tableau Server.
- **Security Protocols:** Comprehensive security measures implemented to protect sensitive data, including encryption, access controls, and authentication methods.

## Appendix C: Data Integrity Measures

To ensure data accuracy during the migration, the following measures will be implemented:

- **Data Profiling:** Analysis of source data to identify inconsistencies or errors before migration.
- **Data Validation:** Verification of migrated data against source data to ensure completeness and accuracy.
- **Reconciliation Reports:** Generation of reports to compare data between the old and new systems.

## Appendix D: Risk Management Plan

Risk	Mitigation Strategy	Contingency Plan
Data Loss	Implement robust backup and recovery procedures.	Restore from backup; manual data entry if necessary.



Risk	Mitigation Strategy	Contingency Plan
Migration Delays	Maintain a detailed project schedule with buffer time.	Reallocate resources; adjust project scope if needed.
Performance Issues	Conduct thorough performance testing after migration.	Optimize server configuration; scale up resources if necessary.
Security Vulnerabilities	Implement security best practices and conduct regular security audits.	Patch vulnerabilities; implement additional security measures.
User Adoption Issues	Provide comprehensive training and support to end-users.	Offer additional training sessions; create user-friendly documentation.

## Appendix E: Reference Materials

- Tableau Online Help: <https://help.tableau.com/>
- Tableau Server Best Practices: <https://www.tableau.com/en-gb/solutions/best-practices>
- Industry Standards: Adherence to generally accepted Business Intelligence (BI) and data warehousing standards.

