

Table of Contents

Executive Summary	3
Project Overview	3
Solution & Benefits	3
Strategic Alignment	3
About Us	3
About Docupal Demo, LLC	4
Our Expertise	4
Certifications and Partnerships	4
Relevant Experience	4
Project Scope and Objectives	4
Scope of Work	4
Project Objectives	5
Deliverables	5
Expected Outcomes	6
Technical Approach and Methodology	6
Development Methodology	6
Tools and Technologies	6
Data Security and Governance	7
Development Phases and Timeline	7
Best Practices	8
Team and Roles	8
Key Personnel	8
Communication and Collaboration	9
Data and Integration Strategy	9
Data Extraction, Transformation, and Loading (ETL)	9
Data Quality and Validation	10
Sample Visualizations and Dashboards	10
Dashboard Themes and Chart Types	10
Enhancing Interactivity and User Experience	11
Industry-Specific Examples	11
Project Timeline and Milestones	11
Project Schedule	12
Key Milestones and Dates	12



Gantt Chart	12
Pricing and Payment Terms	13
Payment Schedule	13
Payment Terms	13
Refund Policy	13
Support and Maintenance	14
Post-Launch Support	14
Updates and Patches	14
Issue Escalation	14
Terms and Conditions	14
Contractual Terms	15
Confidentiality	15
Intellectual Property	15
Limitation of Liability	15
Conclusion and Next Steps	15
Project Initiation	16
Immediate Next Steps	16
Key Contacts	16



Executive Summary

Project Overview

This proposal outlines a custom Tableau development project for Acme, Inc (ACME-1), designed to transform its data into actionable insights. Docupal Demo, LLC will deliver a tailored Tableau solution addressing ACME-1's core business objectives. The primary goals are to improve sales performance, optimize marketing spend, and enhance operational efficiency across the organization.

Solution & Benefits

The Tableau solution will provide ACME-1 with increased data visibility across key performance indicators. This will empower informed decision-making at all levels. The custom dashboards and reports will significantly enhance reporting capabilities, offering a more streamlined and insightful view of business operations. Ultimately, ACME-1 will realize substantial time savings through automated reporting and improved data accessibility.

Strategic Alignment

This project directly aligns with ACME-1's strategic vision of becoming a data-driven organization. By providing accessible and actionable insights, the Tableau solution will foster a culture of informed decision-making. The project's success will contribute directly to ACME-1's ability to leverage data as a strategic asset, driving growth and improving overall business performance.

About Us

About Docupal Demo, LLC

Docupal Demo, LLC, located at 23 Main St, Anytown, CA 90210, United States, is a leading provider of custom Tableau solutions. We help businesses like ACME-1 unlock the power of their data through insightful visualizations and actionable analytics. Our base currency is USD.



Our Expertise

We possess deep Tableau domain expertise. This includes dashboard design, data modeling, advanced analytics, and effective deployment strategies. We are committed to delivering solutions that drive meaningful business outcomes.

Certifications and Partnerships

Our team holds key industry certifications. We have Tableau Desktop Certified Professionals and Tableau Server Certified Associates on staff. Docupal Demo, LLC is also a proud Tableau Partner. This partnership gives us access to the latest resources and support from Tableau.

Relevant Experience

We have a proven track record of success across multiple industries. We've delivered impactful Tableau solutions for clients in retail, finance, and healthcare. These solutions have led to significant improvements in key performance indicators for our clients. We understand the unique challenges and opportunities within these sectors and tailor our approach accordingly.

Project Scope and Objectives

This section outlines the scope, objectives, and deliverables for the Tableau custom development project for ACME-1. Docupal Demo, LLC will deliver interactive dashboards and provide comprehensive support to enhance ACME-1's data visualization and analytical capabilities.

Scope of Work

The project encompasses the development of three core dashboard types:

- **Sales Dashboards:** Providing insights into sales performance, trends, and key metrics.
- **Marketing Performance Dashboards:** Tracking marketing campaign effectiveness, website traffic, and customer engagement.
- **Operational Efficiency Dashboards:** Monitoring key operational metrics to identify areas for improvement.



The scope includes integrating data from various sources, including Salesforce, Google Analytics, Excel spreadsheets, SQL Server databases, and ACME-1's internal databases. We will also develop custom calculations and implement advanced analytics techniques within the dashboards.

Project Objectives

The primary objectives of this project are to:

- Create interactive and user-friendly Tableau dashboards tailored to ACME-1's specific needs.
- Provide actionable insights into sales, marketing, and operational performance.
- Improve data-driven decision-making across ACME-1's departments.
- Streamline data analysis processes and reduce the time spent on manual reporting.
- Enhance ACME-1's ability to identify trends, patterns, and opportunities for growth.

Deliverables

At the completion of the project, Docupal Demo, LLC will deliver the following:

- **Fully Functional Tableau Dashboards:** Production-ready dashboards for sales, marketing, and operations.
- **Comprehensive Documentation:** Detailed documentation outlining dashboard functionality, data sources, and calculations.
- **User Training Materials:** Training guides and materials to enable ACME-1's users to effectively utilize the dashboards.
- **Ongoing Support:** Post-implementation support to address any issues and ensure continued dashboard performance.

Expected Outcomes

ACME-1 can expect the following outcomes upon successful completion of this project:

- Improved visibility into key performance indicators (KPIs) across sales, marketing, and operations.
- Enhanced ability to track progress towards strategic goals.



- Increased efficiency in data analysis and reporting.
- Better-informed decision-making based on accurate and timely data.
- A stronger data-driven culture within the organization.

Technical Approach and Methodology

Docupal Demo, LLC will use a structured approach to deliver ACME-1's Tableau custom development project. Our methodology ensures a high-quality, secure, and scalable solution that meets your specific business needs.

Development Methodology

We will employ an Agile methodology. This iterative approach allows for flexibility and continuous improvement throughout the project lifecycle. We will work in short development cycles, or sprints, with regular feedback sessions to ensure alignment with ACME-1's evolving requirements. This promotes transparency and allows for adjustments as needed.

Tools and Technologies

Our development process leverages the full power of Tableau, enhanced with custom extensions and features:

- **Tableau Desktop:** For dashboard design and data visualization.
- **Tableau Server/Cloud:** For secure hosting and sharing of dashboards.
- **Calculated Fields:** To derive new insights from existing data.
- **Parameters:** To enable user interactivity and dynamic analysis.
- **Sets and Groups:** To categorize and segment data for focused analysis.
- **Forecasting and Trend Lines:** To identify patterns and predict future outcomes.
- **Custom Extensions:** To extend Tableau's functionality and integrate with other systems as needed.

Data Security and Governance

Data security is a top priority. We will implement the following measures:

- **Data Encryption:** Protecting sensitive data at rest and in transit.

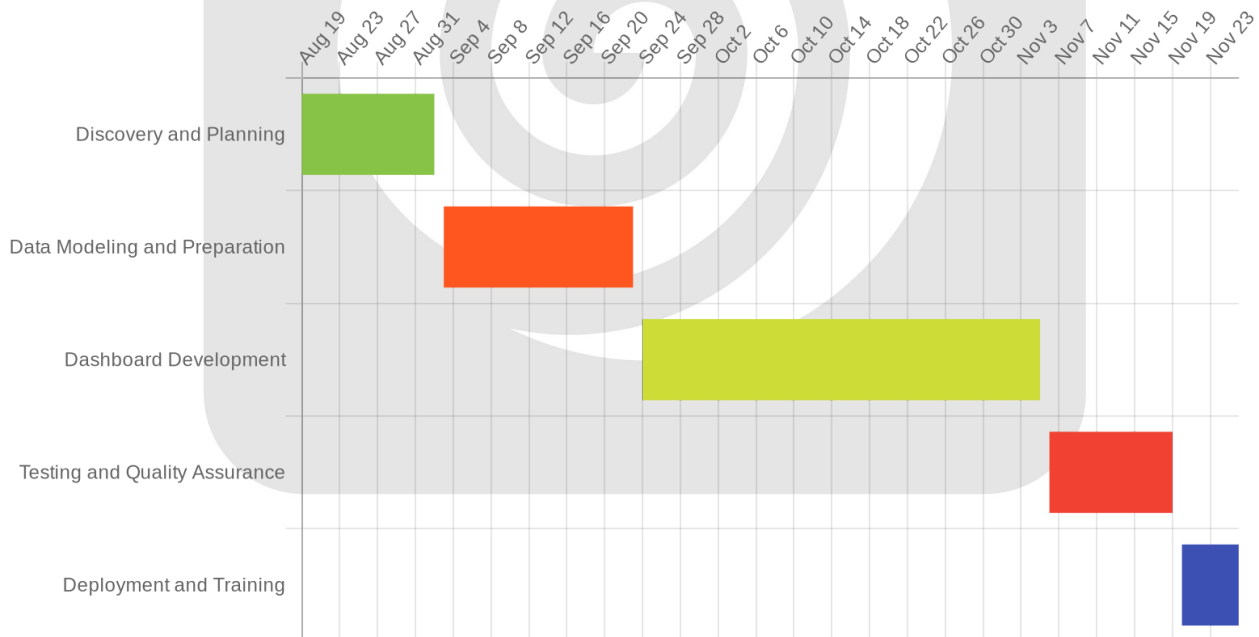


- **Role-Based Access Control:** Limiting access to data based on user roles and permissions.
- **Regular Security Audits:** Identifying and addressing potential vulnerabilities.
- **Compliance:** Adhering to industry regulations and best practices for data privacy.

Development Phases and Timeline

The project will be divided into the following phases:

1. **Discovery and Planning:** Understanding ACME-1's requirements and defining the project scope. (2 weeks)
2. **Data Modeling and Preparation:** Connecting to data sources and preparing data for analysis. (3 weeks)
3. **Dashboard Development:** Creating interactive dashboards and visualizations. (6 weeks)
4. **Testing and Quality Assurance:** Ensuring the accuracy and reliability of the solution. (2 weeks)
5. **Deployment and Training:** Deploying the solution and training ACME-1 users. (1 week)



Best Practices

We adhere to industry best practices for Tableau development, including:

- **Data Source Optimization:** Ensuring efficient data retrieval and processing.
- **Dashboard Performance Tuning:** Optimizing dashboard load times and responsiveness.
- **User-Centered Design:** Creating intuitive and user-friendly dashboards.
- **Version Control:** Using Git for code management and collaboration.
- **Documentation:** Providing comprehensive documentation for the solution.

Team and Roles

Docupal Demo, LLC will provide a dedicated team to ensure the successful completion of ACME-1's Tableau custom development project. Our team's expertise spans Tableau development, consulting, and data analysis, ensuring a comprehensive approach to your needs.

Key Personnel

- **John Smith, Senior Tableau Developer:** John is a Tableau Desktop Certified Professional with over seven years of experience in designing and implementing impactful Tableau solutions.
- **Jane Doe, Tableau Consultant:** Jane brings five years of experience as a Tableau Consultant, specializing in data visualization and dashboard creation.
- **David Lee, Data Analyst:** David has three years of experience as Data Analyst and will support the team with data preparation and validation.

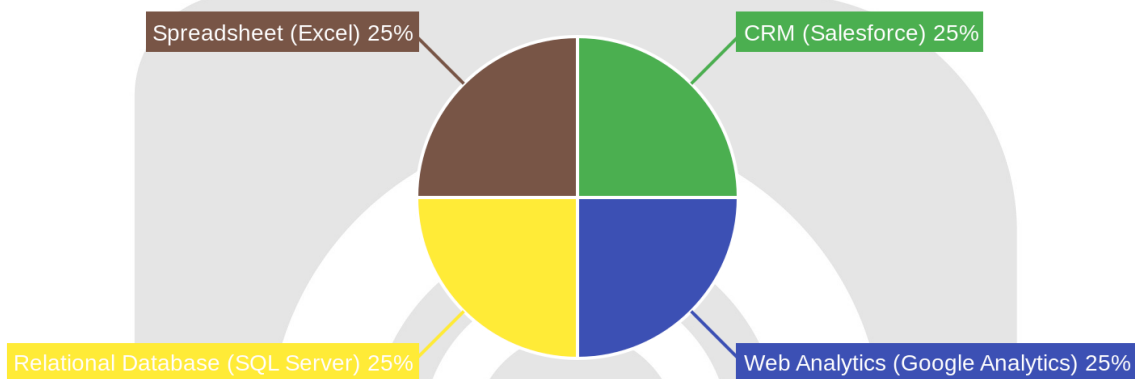
Communication and Collaboration

We will maintain consistent communication through regular project meetings and weekly progress reports. A dedicated communication channel via Slack and email will ensure prompt responses to your queries. We will use Asana to manage tasks and track progress.



Data and Integration Strategy

Our approach ensures seamless data integration and optimal quality for your Tableau dashboards. We will connect to a variety of data sources, including your Salesforce CRM, Google Analytics web analytics, SQL Server relational database, and Excel spreadsheets.



Data Extraction, Transformation, and Loading (ETL)

We will use Tableau Prep Builder to cleanse, shape, and transform your data. This tool allows for visual and intuitive data preparation, ensuring accuracy and consistency. For automated ETL processes, we will leverage Python scripts. These scripts will streamline data extraction, transformation, and loading into Tableau, reducing manual effort and ensuring timely data updates.

Data Quality and Validation

Maintaining data quality is a priority. We will implement a multi-faceted approach to ensure the accuracy and reliability of your data:

- **Data Profiling:** We will analyze the structure, content, and relationships within your data sources to identify potential issues.

- **Data Validation Rules:** We will establish rules to validate data against expected values and formats, flagging any discrepancies.
- **Automated Data Quality Checks:** We will implement automated checks to continuously monitor data quality and identify anomalies.
- **Regular Data Audits:** We will conduct periodic audits to review data quality metrics and ensure adherence to established standards.

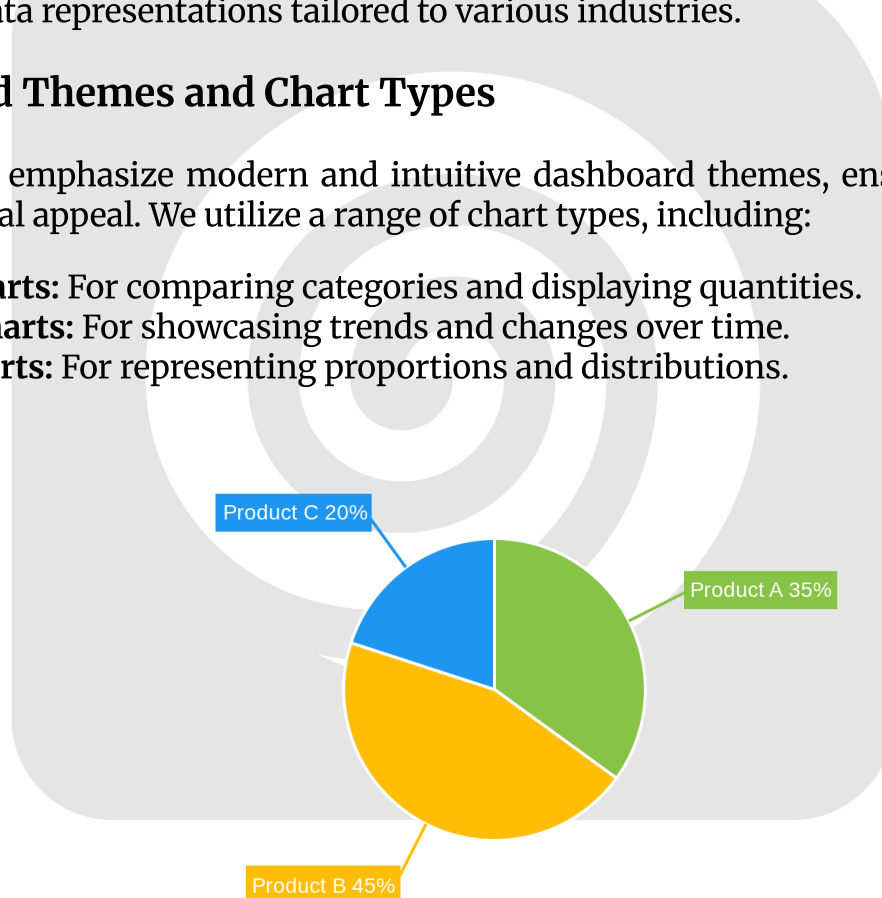
Sample Visualizations and Dashboards

To illustrate the potential of Tableau, we've included examples of visualizations and dashboard designs. These samples highlight our ability to create interactive and insightful data representations tailored to various industries.

Dashboard Themes and Chart Types

Our designs emphasize modern and intuitive dashboard themes, ensuring ease of use and visual appeal. We utilize a range of chart types, including:

- **Bar charts:** For comparing categories and displaying quantities.
- **Line charts:** For showcasing trends and changes over time.
- **Pie charts:** For representing proportions and distributions.



- **Scatter plots:** For identifying correlations and relationships between variables.
- **Geographic maps:** For visualizing location-based data and regional patterns.

Enhancing Interactivity and User Experience

We focus on delivering an engaging user experience through interactive elements:

- **Interactive filters:** Allow users to dynamically refine data based on selected criteria.
- **Drill-down capabilities:** Enable users to explore data at different levels of granularity.
- **Tooltips:** Provide contextual information and detailed data points on hover.
- **User-friendly navigation:** Ensures seamless exploration and efficient data discovery.

Industry-Specific Examples

We have developed dashboards across diverse industries. For example, our retail dashboards provide insights into sales trends and customer behavior. Our finance dashboards track key performance indicators and financial metrics. Our healthcare dashboards monitor patient outcomes and operational efficiency.

Project Timeline and Milestones

This section outlines the project's timeline, key milestones, and associated deadlines. We will use proactive risk management, contingency planning, and clear communication to manage any potential delays.

Project Schedule

The project will follow these key phases:

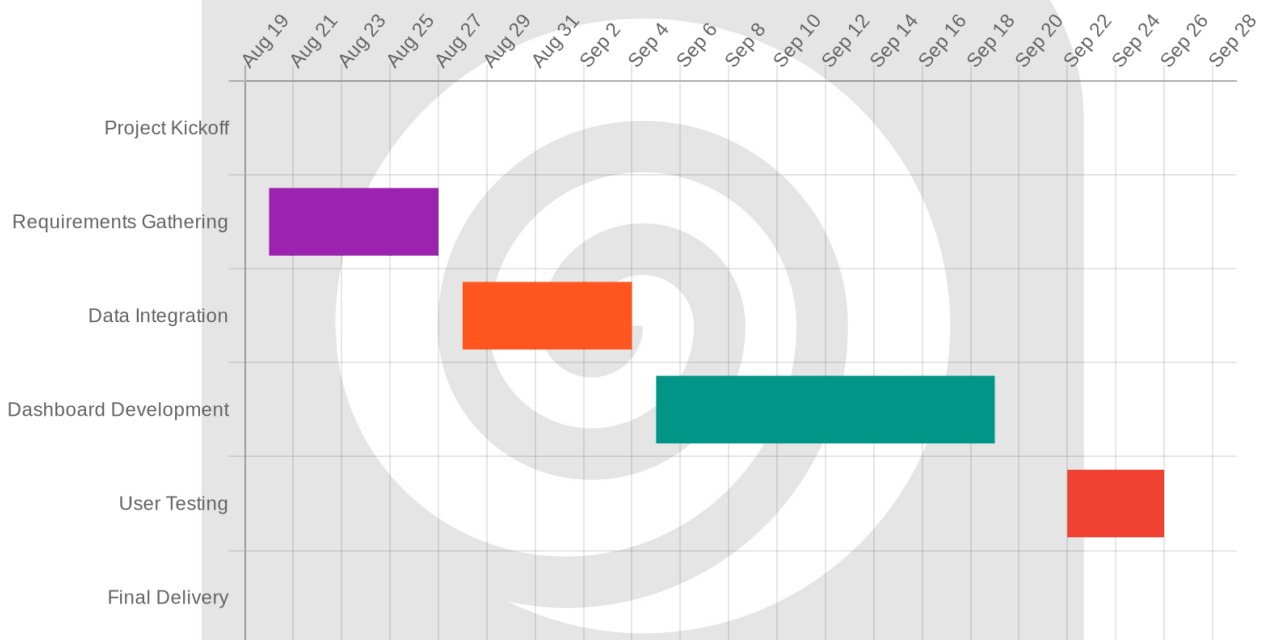
1. **Project Kickoff:** This marks the official start of the project.
2. **Requirements Gathering:** We will collect and analyze your specific needs for the Tableau dashboards.
3. **Data Integration:** We will connect to and prepare your data sources for use in Tableau.
4. **Dashboard Development:** We will build the dashboards according to the gathered requirements.
5. **User Testing:** You will have the opportunity to test the dashboards and provide feedback.
6. **Final Delivery:** We will deliver the completed Tableau dashboards.

Key Milestones and Dates

Milestone	Date
Project Kickoff	[Date]
Dashboard Prototype	[Date]
User Testing	[Date]
Final Delivery	[Date]

Gantt Chart

The following Gantt chart provides a visual representation of the project schedule.



Pricing and Payment Terms

The total project cost for the Tableau custom development is \$50,000. Docupal Demo, LLC offers both fixed price and time & materials pricing options.

Payment Schedule

The payment schedule for this project is structured as follows:

- **Upfront Payment:** 30% of the total project cost (\$15,000) is due upon signing the agreement.
- **Dashboard Completion Payment:** 40% of the total project cost (\$20,000) is due upon completion of the dashboard development phase.
- **Final Payment:** 30% of the total project cost (\$15,000) is due upon final delivery, ACME-1 acceptance, and sign-off.

Payment Terms

All invoices are payable within 30 days (Net 30) of the invoice date. Payments can be made via wire transfer or check. Details for payment will be included on each invoice.

Refund Policy

Docupal Demo, LLC is committed to delivering high-quality solutions that meet ACME-1 requirements. Should the delivered solution not conform to the agreed-upon specifications, a mutually agreeable refund may be issued. The specific terms of any refund will be determined on a case-by-case basis and outlined in writing.

Support and Maintenance

Docupal Demo, LLC is committed to providing ongoing support and maintenance for your Tableau custom development project. We offer several channels to address your needs after the launch of your solution.

Post-Launch Support

We provide comprehensive support options, including phone support, email support, and access to an online knowledge base. Our team is readily available to assist with any questions or issues that may arise.

Updates and Patches

To ensure optimal performance and security, we deliver updates and patches on a regular schedule. Expect quarterly updates, along with timely patches as needed to address critical security vulnerabilities.



Issue Escalation

Should you encounter an issue requiring escalation, we have a clearly defined process. First, contact your dedicated project manager. If further assistance is needed, reach out to the account manager. Finally, for critical matters, the executive team is available to ensure prompt resolution.

Terms and Conditions

This section outlines the terms and conditions governing the Tableau custom development project between Docupal Demo, LLC ("Producer") and ACME-1 ("Client"). By proceeding with this project, both parties agree to adhere to the following terms.

Contractual Terms

This agreement will commence on the date of the last signature and will continue until the project's completion, as defined in the project scope. Any changes to the project scope must be documented and agreed upon in writing by both parties. Payments will be made according to the schedule outlined in the "Investment" section of this proposal. Late payments may incur interest charges. Either party may terminate the agreement with written notice if the other party breaches its obligations.

Confidentiality

Both Producer and Client acknowledge that they may have access to confidential information belonging to the other party. Both parties agree to protect this information and not disclose it to third parties. Non-disclosure agreements (NDAs) are in place to ensure the protection of sensitive data. Strict data handling protocols will be followed throughout the project.

Intellectual Property

ACME-1 will retain ownership of all data provided for the project and the final dashboard designs. Docupal Demo, LLC will retain ownership of the underlying code, methodologies, and tools used in the development of the Tableau dashboards.



Limitation of Liability

Docupal Demo, LLC's liability for any claims arising out of this agreement shall be limited to the total fees paid by ACME-1 under this agreement. In no event shall Docupal Demo, LLC be liable for any indirect, incidental, or consequential damages. Standard liability clauses are included in the full contract for further clarification.

Conclusion and Next Steps

This proposal outlines a custom Tableau development solution tailored to ACME-1's specific needs. It details our understanding of your requirements, our proposed approach, and the expected deliverables. We are confident that our expertise in Tableau development will enable you to unlock valuable insights from your data and achieve your business objectives.

Project Initiation

To move forward, ACME-1 should review, sign, and return this proposal along with a purchase order.

Immediate Next Steps

Upon acceptance, we will schedule a kickoff meeting to formally commence the project. This meeting will allow us to:

- Introduce the project team.
- Finalize the project timeline.
- Establish communication protocols.
- Gain access to relevant data sources.

Key Contacts

For any questions or clarifications, please reach out to:

- Project Manager: [Email Address], [Phone Number]
- Account Manager: [Email Address], [Phone Number]

