

Table of Contents

Introduction	3
Project Overview	3
Expected Outcomes and Benefits	3
Proposal Highlights	3
Market Analysis	4
Ecommerce Industry Trends	4
Target Market Analysis	4
Project Scope and Requirements	4
Core Features	5
Custom Requirements and Integrations	5
Project Milestones and Timelines	5
Deliverables	6
Technical Approach	6
Laravel Framework Utilization	7
Architecture and Scalability	7
Development Methodology	7
Design and User Experience	8
User Interface (UI) and User Experience (UX) Design	8
Mobile-First Approach	8
Branding and Style Guidelines	8
Design Strategy for Customer Engagement	9
Security and Compliance	9
Security Best Practices	9
Data Protection	9
Compliance Standards	9
Team and Expertise	10
Our Team and Expertise	10
Key Personnel	10
Ensuring Project Success	10
Project Timeline and Milestones	10
Project Schedule	11
Key Deliverables	11
Phase Breakdown	11



Pricing and Payment Terms	12
Project Cost Breakdown	12
Payment Schedule	12
Payment Methods and Terms	13
Maintenance and Support	13
Maintenance Services	13
Support Services	13
Service Level Agreement (SLA)	14
Conclusion and Next Steps	14
Initiating the Project	14
Follow-Up and Contact Information	14



Introduction

This document presents a comprehensive proposal from DocuPal Demo, LLC to Acme, Inc (ACME-1) for the development of a new ecommerce platform. Our aim is to provide ACME-1 with a robust and scalable solution built on the Laravel framework, empowering you to expand your market reach and substantially increase online sales.

Project Overview

The core purpose of this project is to create an ecommerce platform tailored to ACME-1's specific needs. This platform will enable ACME-1 to streamline operations, improve customer satisfaction, and enhance brand visibility in the online marketplace.

Expected Outcomes and Benefits

This ecommerce platform is designed to deliver several key benefits:

- **Increased Online Sales:** By providing a user-friendly and efficient shopping experience, the platform will drive higher conversion rates and overall sales volume.
- **Improved Customer Satisfaction:** A seamless and intuitive interface will enhance the customer journey, leading to greater satisfaction and loyalty.
- **Streamlined Operations:** Automated processes and integrated systems will reduce administrative overhead and improve operational efficiency.
- **Enhanced Brand Visibility:** A modern and visually appealing design will strengthen ACME-1's brand presence and attract new customers.

Proposal Highlights

This proposal outlines our approach to achieving these outcomes, including technical specifications, design strategies, and project timelines. We have detailed the core features, development phases, and associated costs to provide ACME-1 with



a clear understanding of the project scope and our commitment to its success. We believe this platform will provide ACME-1 with a competitive edge in the ecommerce landscape.

Market Analysis

Ecommerce Industry Trends

The ecommerce sector continues its strong growth trajectory. Several key trends shape the market. These include the increasing use of mobile devices for online shopping. Personalization is also a major factor, with customers expecting tailored experiences. Furthermore, social commerce, where sales occur directly on social media platforms, is gaining traction. Finally, businesses are focused on improving the customer experience through better website design, faster shipping, and easier returns.

Target Market Analysis

ACME-1's target market consists of online consumers seeking [Inferred: products ACME-1 sells]. These consumers value convenience, competitive pricing, and a wide selection. Understanding their preferences and online behavior is crucial. ACME-1 needs to focus on providing a seamless and user-friendly online shopping experience. This includes easy navigation, detailed product information, and secure payment options. Mobile optimization is also essential, as many customers will access the site via smartphones and tablets. ACME-1 should prioritize building trust through customer reviews, clear return policies, and responsive customer support. Effective marketing strategies, including search engine optimization (SEO) and social media marketing, will be necessary to reach the target audience and drive traffic to the online store.

Project Scope and Requirements

This section defines the scope of the ecommerce development project for ACME-1. It details the features, functionalities, and deliverables that DocuPal Demo, LLC will provide. The platform will be built using the Laravel framework.



Core Features

The ecommerce platform will include these core features:

- **Product Catalog:** A comprehensive and easily navigable catalog to showcase ACME-1's products.
- **Shopping Cart:** A user-friendly shopping cart system allowing customers to add, remove, and modify items before checkout.
- **User Accounts:** Secure user accounts for customers to manage their profiles, order history, and saved addresses.
- **Order Management:** A robust order management system for ACME-1 to process, track, and fulfill customer orders.
- **Payment Gateway Integration:** Seamless integration with secure payment gateways to facilitate online transactions.
- **CMS Functionality:** Content Management System (CMS) capabilities, enabling ACME-1 to easily manage website content.

Custom Requirements and Integrations

In addition to the core features, the platform will include these custom requirements and third-party integrations specific to ACME-1:

- **Inventory Management System Integration:** Integration with ACME-1's existing inventory management system to ensure accurate stock levels and prevent overselling.
- **Custom Reporting Dashboard:** A custom reporting dashboard providing ACME-1 with key insights into sales, customer behavior, and product performance.

Project Milestones and Timelines

The project will be completed in four phases, with the following estimated timelines:

- **Phase 1: Requirements Gathering & Design (4 weeks)**
 - Detailed requirements gathering sessions to finalize specifications.
 - Creation of wireframes and mockups for user interface (UI) and user experience (UX) design.
 - Design approval from ACME-1.
- **Phase 2: Development (12 weeks)**



- Front-end and back-end development of the ecommerce platform using Laravel.
- Implementation of core features, custom requirements, and third-party integrations.
- Regular code reviews and quality assurance checks.
- **Phase 3: Testing & Deployment (4 weeks)**
 - Thorough testing of the platform to identify and fix any bugs or issues.
 - User acceptance testing (UAT) by ACME-1 to ensure the platform meets their requirements.
 - Deployment of the platform to a production environment.
- **Phase 4: Training & Support (Ongoing)**
 - Training sessions for ACME-1 personnel on how to use and manage the ecommerce platform.
 - Ongoing technical support and maintenance to ensure the platform runs smoothly.

Deliverables

The following deliverables will be provided to ACME-1 throughout the project:

- Detailed project plan with timelines and milestones.
- Wireframes and mockups of the user interface.
- Fully functional ecommerce platform built using Laravel.
- Integration with ACME-1's existing inventory management system.
- Custom reporting dashboard.
- User manuals and training materials.
- Ongoing technical support and maintenance.

Technical Approach

Our technical approach focuses on building a robust, scalable, and secure e-commerce platform for ACME-1 using the Laravel framework. We will adhere to industry best practices and leverage Laravel's extensive features to deliver a high-quality solution.



Laravel Framework Utilization

We'll use Laravel as the foundation for ACME-1's e-commerce platform due to its elegant syntax, powerful features, and strong community support. Laravel's Model-View-Controller (MVC) architecture will promote code organization and maintainability. The Eloquent ORM will simplify database interactions, while the Blade templating engine will allow for dynamic and reusable user interfaces.

Laravel's built-in security features, such as protection against cross-site scripting (XSS) and SQL injection, will be implemented. We will also incorporate encryption for sensitive data and conduct regular security audits to identify and address potential vulnerabilities.

Architecture and Scalability

The system architecture will be designed for scalability and high performance. Laravel's queue system will manage asynchronous tasks, such as sending emails and processing orders, ensuring that the platform remains responsive even during peak loads. We will use caching mechanisms to reduce database queries and improve page load times. Optimized database interactions will further enhance performance.

Development Methodology

We will follow an Agile development methodology, with iterative development cycles and continuous integration. This allows for flexibility and ensures that ACME-1 is involved throughout the development process. We will use Git for version control to manage code changes and facilitate collaboration among the development team. Composer will manage project dependencies, ensuring that all required libraries and packages are properly installed and updated.

We will adhere to PSR coding standards to ensure code consistency and readability. This will make the codebase easier to maintain and extend in the future. Our development team will conduct thorough testing throughout the development process, including unit tests, integration tests, and user acceptance testing (UAT), to ensure the quality and reliability of the platform.



Design and User Experience

We will craft a user experience focused on simplicity and engagement. Our design strategy is centered around providing ACME-1 customers with seamless navigation, visually appealing layouts, and informative product details. This approach aims to maximize conversions and foster customer loyalty.

User Interface (UI) and User Experience (UX) Design

Our UI/UX design process prioritizes intuitive navigation. Customers should effortlessly find what they need. Visual appeal is also key. We'll create a design that is modern, clean, and aligns with ACME-1's brand. We'll present products with high-quality images and engaging descriptions. This encourages purchases and reduces customer hesitation. The goal is to create a smooth, enjoyable shopping experience.

Mobile-First Approach

Recognizing the importance of mobile commerce, we will adopt a mobile-first approach. The website will be fully responsive. It will adapt seamlessly to different screen sizes and devices. This ensures an optimal experience for all users, regardless of their device. Key elements include:

- Optimized images for faster loading times on mobile networks.
- Touch-friendly navigation for easy browsing on smartphones and tablets.
- A streamlined checkout process that is quick and secure on any device.

Branding and Style Guidelines

We will closely follow ACME-1's brand guidelines and style guides. This ensures consistency across all design elements. Your brand colors, typography, and imagery will be integrated seamlessly. This reinforces your brand identity. It also creates a cohesive and recognizable experience for your customers. We believe in creating a design that enhances your brand's message.

Design Strategy for Customer Engagement

We'll use several design strategies to boost customer engagement. These include:



- **Clear Calls to Action:** Strategically placed buttons and prompts guide users towards key actions, such as adding products to their cart or proceeding to checkout.
- **Visually Appealing Design:** A well-designed website is more engaging. We will use high-quality images, videos, and graphics to capture the attention of your visitors.
- **Engaging Product Descriptions:** We'll craft compelling product descriptions that highlight the benefits of each item. This helps customers make informed purchase decisions.
- **Easy Navigation:** Intuitive menus and search functionality make it easy for customers to find what they're looking for.

Security and Compliance

We are committed to providing a secure and compliant ecommerce platform for ACME-1. We will implement robust security measures to protect sensitive data and ensure a safe user experience.

Security Best Practices

Our development process follows OWASP guidelines. This ensures that we address common web application vulnerabilities. We will also conduct regular security updates to patch any newly discovered vulnerabilities. Penetration testing will be performed to identify and resolve potential weaknesses in the system.

Data Protection

Protecting payment data and personal information is a top priority. We will comply with PCI DSS standards for handling credit card information. Tokenization will be used to protect sensitive payment data. Encryption will be implemented to safeguard all personal information.

Compliance Standards

Our platform will be designed to comply with relevant compliance standards. This includes PCI DSS for payment processing. We will also address GDPR requirements for handling user data.



Team and Expertise

Our Team and Expertise

DocuPal Demo, LLC brings together a skilled team to ensure the success of your e-commerce project. Our team's expertise spans project management, Laravel development, and UI/UX design. We are committed to delivering a high-quality e-commerce solution tailored to ACME-1's needs.

Key Personnel

- **Project Manager:** [Name] will oversee all aspects of the project, ensuring timely delivery and adherence to the agreed-upon scope. [Name] has extensive experience in managing similar e-commerce projects.
- **Lead Developer:** [Name] is our Laravel expert, responsible for the technical architecture and development of the e-commerce platform. [Name] possesses significant experience with Laravel and e-commerce development.
- **UI/UX Designer:** [Name] will create an intuitive and engaging user interface for ACME-1's customers. [Name]'s portfolio showcases a range of successful design projects.

Ensuring Project Success

Our team uses agile methodologies to manage the project efficiently. Daily stand-up meetings will keep everyone informed and aligned. We also employ continuous integration and continuous deployment (CI/CD) practices. These practices help us deliver updates and improvements quickly and reliably. Our approach emphasizes collaboration and transparency. We strive to maintain open communication with ACME-1 throughout the development process.

Project Timeline and Milestones

We will follow a structured approach, dividing the project into four key phases. These phases are: Requirements Gathering & Design, Development, Testing & Deployment, and Training & Support.



Project Schedule

Our project schedule is designed to ensure timely delivery and incorporates buffer time for contingencies. We have allocated two weeks as a buffer during the development phase. An additional week is included as a buffer during the testing phase.

Key Deliverables

We have identified the following key deliverables with target completion dates:

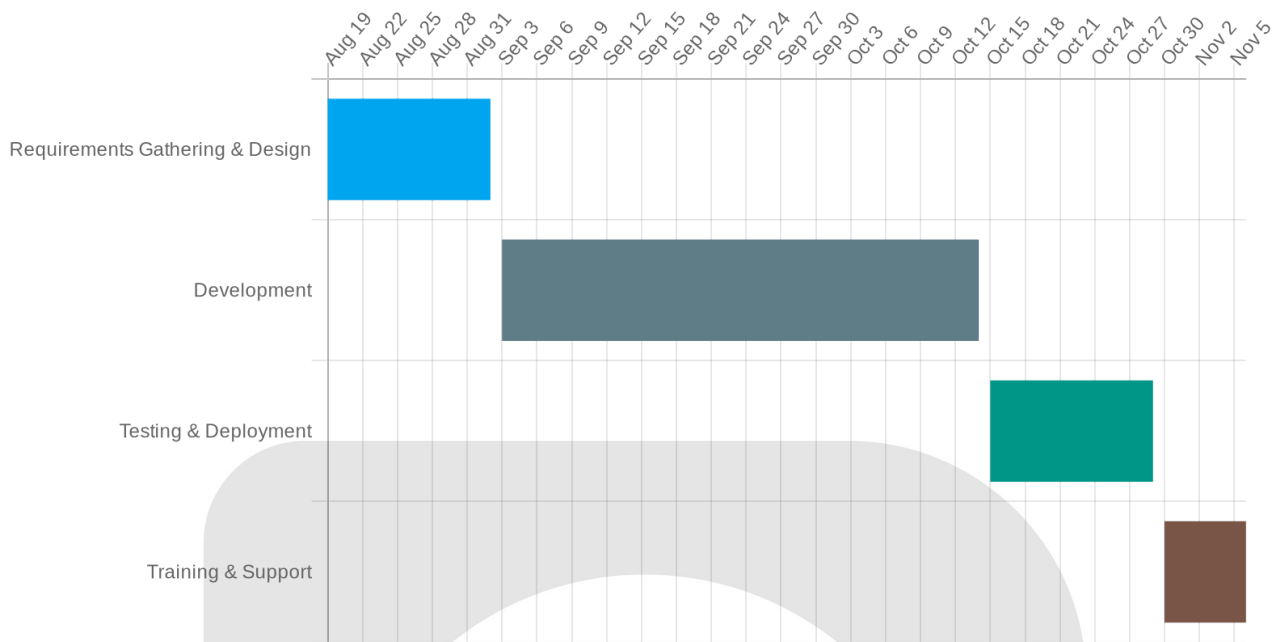
- **Design Mockups:** [Date]
- **MVP Release:** [Date]
- **Final Product Launch:** [Date]

Phase Breakdown

The project will progress through the following phases:

1. **Requirements Gathering & Design:** This initial phase involves understanding ACME-1's specific needs and translating them into detailed design specifications.
2. **Development:** In this phase, our team will build the e-commerce platform based on the approved designs and technical specifications.
3. **Testing & Deployment:** Rigorous testing will be conducted to ensure the platform functions flawlessly. Following successful testing, the platform will be deployed to the production environment.
4. **Training & Support:** We will provide comprehensive training to ACME-1's staff. We will also offer ongoing support to address any issues or questions that may arise.





Pricing and Payment Terms

The following details the investment required for the Laravel Ecommerce Development project and the payment terms. All costs are in United States Dollars (USD).

Project Cost Breakdown

The total project cost is broken down into the following key areas:

- Project Management: [Cost]
- Design: [Cost]
- Development: [Cost]
- Testing: [Cost]
- Deployment: [Cost]
- Training: [Cost]

Payment Schedule

We offer a phased payment schedule to align with project milestones. This approach helps ensure transparency and mutual accountability throughout the development process. The payment schedule is as follows:

- 30% of the total project cost is due upfront.
- 30% is due upon completion of the design phase.
- 30% is due upon completion of the development phase.
- The final 10% is due upon final deployment and ACME-1's acceptance of the completed project.

Payment Methods and Terms

We accept payments via bank transfer and credit card. Our payment terms are net 30 days from the date of invoice. Please note that work on subsequent phases will commence upon receipt of payment for the preceding phase.

Maintenance and Support

DocuPal Demo, LLC understands the importance of ongoing maintenance and reliable support for your e-commerce platform. We offer comprehensive maintenance and support services to ensure your ACME-1 store operates smoothly and efficiently.

Maintenance Services

Our maintenance services include:

- **Bug Fixes:** We will promptly address any bugs or issues that arise to maintain the functionality of your store.
- **Security Updates:** We will implement the latest security patches and updates to protect your store and customer data from potential threats.
- **Performance Optimizations:** We will continuously monitor and optimize your store's performance to ensure fast loading times and a seamless user experience.

Support Services

We provide support via email and phone during business hours (9:00 AM to 5:00 PM Pacific Time, Monday through Friday). Our support team is readily available to assist with any questions or issues you may encounter.



Service Level Agreement (SLA)

We guarantee a 99.9% uptime for your e-commerce platform. In the event of downtime exceeding this threshold, we will provide compensation as outlined in our full Service Level Agreement, which will be provided upon project commencement. This agreement details the specific credits or remedies available based on the duration and impact of any downtime.

Conclusion and Next Steps

DocuPal Demo, LLC is confident that our proposed solution will provide ACME-1 with a robust, scalable, and user-friendly e-commerce platform. This platform is designed to enhance your online presence, streamline sales processes, and drive customer satisfaction. Our expertise in Laravel development, coupled with our commitment to security and performance, ensures a high-quality product tailored to your specific needs.

Initiating the Project

To move forward with this exciting project, we kindly request that you:

1. Review and sign this proposal, indicating your acceptance of the terms and conditions outlined herein.
2. Submit the initial payment as per the agreed-upon payment schedule.

Upon receipt of the signed proposal and initial payment, we will promptly commence the project's initiation phase, as detailed in the project timeline.

Follow-Up and Contact Information

We understand that you may have further questions or require additional clarification. Please do not hesitate to contact [Name] via email at [Email] or by phone at [Phone Number].

We have scheduled a follow-up call for 2025-08-19 to address any outstanding queries and ensure a smooth transition into the project's execution phase. We look forward to partnering with ACME-1 on this venture and delivering a successful e-commerce solution that exceeds your expectations.

