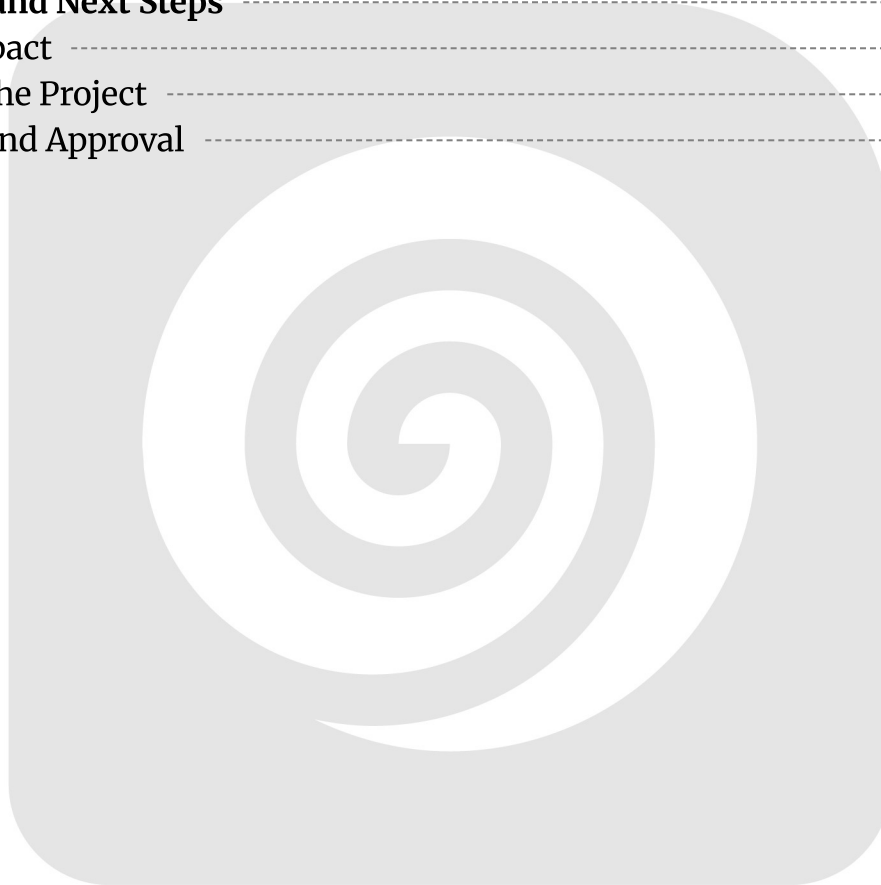


Table of Contents

Introduction and Project Overview	3
Project Goals	3
Addressing Business Challenges	3
Expected Benefits	3
Market and Technology Analysis	4
Ecommerce Platform Trends	4
Shopify API Ecosystem	5
Relevance to ACME-1	5
Technical Approach and Solution Design	6
Integration Architecture	6
Data Flow	6
API Endpoints	7
Security Measures	7
Technology Stack	8
Features and Functionality	8
Core Integration Features	8
Automated Order Processing	8
Real-Time Inventory Synchronization	8
Enhanced Customer Data Management	8
User Experience Enhancements	9
Accurate Order Tracking	9
Personalized Product Recommendations	9
Custom App for Advanced Reporting	9
Project Timeline and Milestones	9
Project Phases and Milestones	9
Visual Timeline	10
Cost Estimation and Budget	10
Development and Integration Costs	11
Ongoing Maintenance	11
Cost-Saving Strategies	11
Cost Distribution	11
Detailed Cost Breakdown	12
Security and Compliance Considerations	12



Data Protection	12
Compliance Adherence	13
Team and Expertise	13
Key Team Members	13
Risks and Mitigation Strategies	14
Data Synchronization Risks	14
Security Vulnerabilities	14
Monitoring and Management	15
Fallback Options	15
Conclusion and Next Steps	15
Project Impact	15
Initiating the Project	15
Feedback and Approval	16



Introduction and Project Overview

This document presents a proposal from Docupal Demo, LLC for a Shopify API integration project tailored to meet the specific needs of ACME-1. ACME-1, based in Wilsonville, Oregon, seeks to enhance its e-commerce operations through a more streamlined and efficient data management system. This integration will address key business challenges related to order processing and customer data handling.

Project Goals

The primary goal of this project is to seamlessly integrate ACME-1's Shopify store with its existing internal systems. This integration aims to automate data synchronization, eliminating the need for manual data entry and reducing the risk of errors. By connecting Shopify to other business-critical applications, ACME-1 can achieve a unified view of its operations and make data-driven decisions.

Addressing Business Challenges

Currently, ACME-1 faces challenges related to inefficient manual data entry processes. This manual effort consumes valuable time and resources, diverting attention from other strategic initiatives. Additionally, the lack of real-time inventory updates can lead to stockouts, order fulfillment delays, and customer dissatisfaction. This Shopify API integration directly addresses these challenges by automating data flow between systems.

Expected Benefits

The successful implementation of this integration will yield several significant benefits for ACME-1's e-commerce operations. These include:

- **Increased Efficiency:** Automation of data entry and order processing will free up staff time and reduce operational costs.
- **Reduced Errors:** Automated data synchronization will minimize the risk of human error, ensuring data accuracy and consistency across systems.
- **Improved Customer Satisfaction:** Real-time inventory updates and personalized customer experiences will enhance customer satisfaction and loyalty.



- **Better Data Management:** Centralized data management will provide a comprehensive view of customer information, enabling targeted marketing campaigns and improved customer service.

This proposal outlines the various phases of the project, including planning, design, development, testing, and deployment. It also provides detailed information on project costs, security measures, and the expertise of the Docupal Demo, LLC team. Our team is confident that this Shopify API integration will significantly enhance ACME-1's e-commerce capabilities and drive business growth.

Market and Technology Analysis

The ecommerce landscape is rapidly evolving, with businesses increasingly relying on robust and scalable platforms to manage their online operations. Shopify has emerged as a leading solution, known for its user-friendliness and extensive ecosystem of apps and integrations. This analysis explores the current market trends and the technological advantages offered by the Shopify API, emphasizing their relevance to Acme Inc.'s strategic goals.

Ecommerce Platform Trends

The global ecommerce market continues to experience significant growth, driven by increased internet penetration and changing consumer preferences. Customers now expect seamless, personalized experiences across all channels. This expectation necessitates that businesses adopt platforms capable of handling complex operations, including inventory management, order processing, and customer relationship management. Cloud-based platforms like Shopify are gaining traction due to their scalability, flexibility, and lower upfront costs compared to traditional on-premise solutions. Mobile commerce is also a key trend, with a growing number of transactions occurring on smartphones and tablets. Therefore, platforms must offer mobile-optimized experiences and integrate with mobile payment gateways.

Shopify API Ecosystem

Shopify's API provides developers with the tools to create custom applications and integrations, extending the platform's functionality to meet specific business needs. The API allows for seamless data exchange between Shopify and other systems,



such as ERP, CRM, and marketing automation platforms. This connectivity enables businesses to automate processes, improve efficiency, and gain a holistic view of their operations. The Shopify App Store features a wide range of pre-built apps that address various business requirements, but custom integrations offer the advantage of tailoring solutions to unique workflows and data structures.

The adoption of the Shopify API has grown significantly over the past five years, reflecting its increasing importance in the ecommerce ecosystem. This growth is due to the increasing need for customization and integration as businesses seek to differentiate themselves and optimize their operations. The chart below illustrates the growth in Shopify API adoption from 2020 to 2025:

Shopify's API ecosystem includes several key components:

- **REST API:** Enables developers to interact with Shopify's data and functionality using standard HTTP requests.
- **GraphQL API:** Provides a more efficient way to query and retrieve data, reducing the amount of data transferred and improving performance.
- **Webhooks:** Allow applications to receive real-time notifications when specific events occur in a Shopify store, such as order creation or product updates.
- **SDKs:** Offer pre-built libraries and tools for various programming languages, simplifying the development process.

Relevance to ACME-1

Integrating Shopify with ACME-1's existing systems via the Shopify API presents several key opportunities. By connecting Shopify to ACME-1's ERP system, for instance, inventory levels can be automatically synchronized, preventing stockouts and improving order fulfillment accuracy. Integrating with ACME-1's CRM system can provide a 360-degree view of customers, enabling personalized marketing campaigns and improved customer service. Furthermore, custom integrations can be developed to address ACME-1's unique business processes and data requirements, ensuring a tailored solution that maximizes efficiency and drives growth.

Technical Approach and Solution Design

This section details our proposed technical approach for integrating Shopify with ACME-1's existing systems. We will focus on a secure and efficient integration using Shopify's Orders API, Products API, and Customers API. Our primary goal is to



ensure seamless data synchronization between platforms.

Integration Architecture

We propose a hybrid approach that combines scheduled batch updates with real-time webhooks to maintain data consistency. This approach balances the need for up-to-date information with the efficient use of system resources.

- **Batch Updates:** Regularly scheduled data transfers will synchronize large datasets between Shopify and ACME-1's systems. These updates will be scheduled during off-peak hours to minimize any impact on system performance.
- **Real-time Webhooks:** Shopify webhooks will trigger near real-time updates for specific events, such as new order creation or customer updates. This ensures that critical information is immediately reflected in ACME-1's systems.

Data Flow

The integration will facilitate bidirectional data flow between Shopify and ACME-1's systems.

1. **Orders:** When a new order is placed on Shopify, a webhook will notify our integration service. The service will then retrieve the order details from the Shopify Orders API and create a corresponding record in ACME-1's order management system. Updates to order status in ACME-1's system will be pushed to Shopify via the Orders API.
2. **Products:** Product information, including details and inventory levels, will be synchronized between Shopify and ACME-1's product database. Initial product data will be imported to Shopify using Products API and regular sync will be scheduled to update the product information.
3. **Customers:** Customer data, including contact information and purchase history, will be synchronized between Shopify and ACME-1's CRM system. New customer accounts created in Shopify will be pushed to ACME-1's CRM via Customers API. Customer updates in ACME-1's CRM will be pushed to Shopify via Customers API.



API Endpoints

We will utilize the following Shopify API endpoints:

- **Orders API:**
 - GET /admin/api/2025-07/orders.json (Retrieve orders)
 - GET /admin/api/2025-07/orders/{order_id}.json (Retrieve a specific order)
 - PUT /admin/api/2025-07/orders/{order_id}.json (Update an order)
- **Products API:**
 - GET /admin/api/2025-07/products.json (Retrieve products)
 - GET /admin/api/2025-07/products/{product_id}.json (Retrieve a specific product)
 - PUT /admin/api/2025-07/products/{product_id}.json (Update a product)
- **Customers API:**
 - GET /admin/api/2025-07/customers.json (Retrieve customers)
 - GET /admin/api/2025-07/customers/{customer_id}.json (Retrieve a specific customer)
 - PUT /admin/api/2025-07/customers/{customer_id}.json (Update a customer)

Security Measures

Data security is a top priority. We will implement the following security measures:

- **Encrypted Connections:** All data transmitted between Shopify and ACME-1's systems will be encrypted using HTTPS.
- **Secure API Keys:** Shopify API keys will be stored securely and accessed only by authorized personnel.
- **Regular Security Audits:** We will conduct regular security audits to identify and address any potential vulnerabilities.

Technology Stack

Our integration solution will be built using the following technologies:

- **Programming Languages:** Python
- **Frameworks:** Django, Flask
- **Database:** PostgreSQL
- **Cloud Platform:** AWS



Features and Functionality

Core Integration Features

The Shopify API integration will provide ACME-1 with several key functionalities. These features streamline operations and improve customer experience. Our integration focuses on automation, real-time data, and enhanced data management.

Automated Order Processing

The system will automatically process orders placed on the ACME-1 Shopify store. Order details will flow directly into ACME-1's existing systems. This eliminates manual data entry and reduces processing time. Automated order processing ensures accuracy.

Real-Time Inventory Synchronization

Inventory levels will synchronize in real-time between Shopify and ACME-1's inventory management system. This prevents overselling and stockouts. Real-time updates provide accurate product availability information to customers.

Enhanced Customer Data Management

The integration consolidates customer data from Shopify and ACME-1's other systems. This creates a unified view of each customer. This single customer view enables personalized marketing and improved customer service.

User Experience Enhancements

This integration improves the user experience for ACME-1's customers.

Accurate Order Tracking

Customers will receive real-time updates on their order status. The system will provide accurate tracking information. This reduces customer inquiries and increases satisfaction.



Personalized Product Recommendations

The integration uses customer data to provide personalized product recommendations. Recommendations will appear on the ACME-1 Shopify store. Personalized recommendations can increase sales and customer engagement.

Custom App for Advanced Reporting

Docupal Demo, LLC will develop a custom app for ACME-1. The app will provide advanced reporting capabilities. This reporting tool offers insights into sales trends, customer behavior, and inventory performance. ACME-1 can use these insights to make data-driven business decisions. The custom app is tailored to ACME-1's specific reporting needs.

Project Timeline and Milestones

This project will proceed through five key phases. These phases are Planning, Development, Testing, Deployment, and Maintenance. Each phase has specific goals and deliverables. We will track progress closely using weekly reports. We will also schedule regular meetings with ACME-1 stakeholders. This will ensure everyone stays informed.

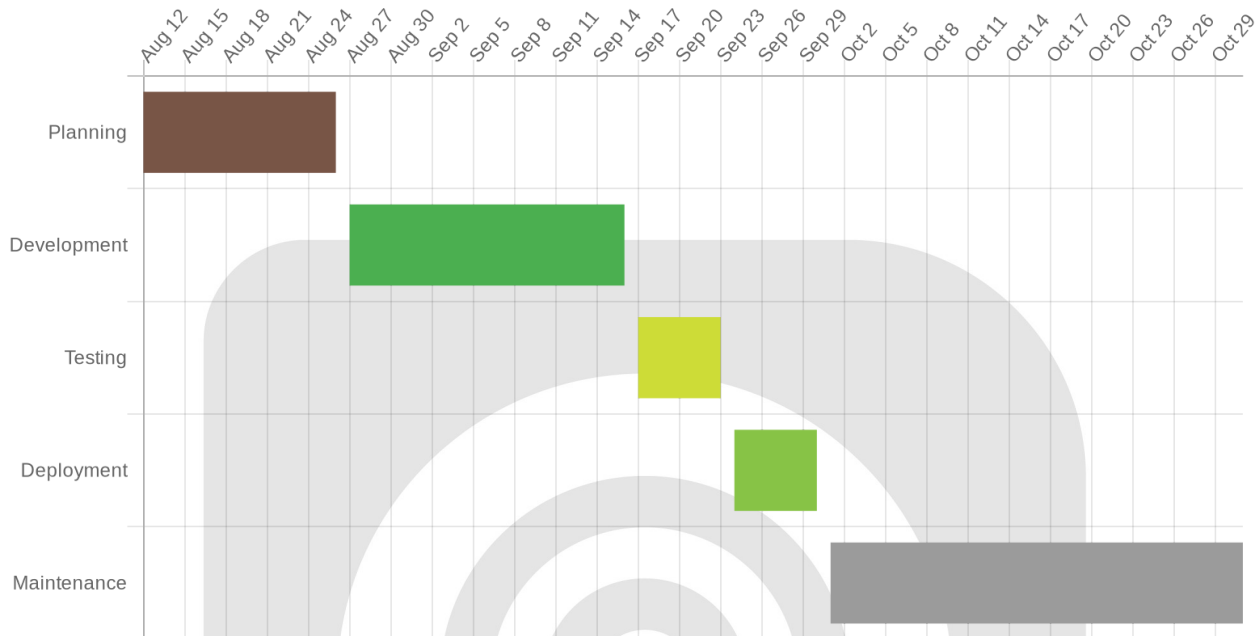
Project Phases and Milestones

- **Phase 1: Planning.** This initial phase defines the project scope and requirements. We will finalize the integration strategy. We aim to complete this phase by 2025-08-26.
- **Phase 2: Development.** Our team will build and configure the Shopify API integration. We will focus on secure and efficient data transfer. We expect to finish this phase by 2025-09-16.
- **Phase 3: Testing.** Rigorous testing will ensure the integration works correctly. We will address any bugs or issues that arise.
- **Phase 4: Deployment.** We will deploy the integrated system to ACME-1's live environment. Careful monitoring will follow to ensure a smooth transition. The target deployment date is 2025-09-30.
- **Phase 5: Maintenance.** Ongoing support and maintenance will keep the integration running smoothly. This includes updates and troubleshooting as needed.



Visual Timeline

To illustrate the project schedule, the following Gantt chart provides a visual overview of the project's timeline:



Cost Estimation and Budget

This section outlines the estimated costs associated with the Shopify API integration project for ACME-1. The budget encompasses development, integration, and ongoing maintenance. We are committed to providing cost-effective solutions while maintaining high-quality standards.

Development and Integration Costs

The estimated cost for development and integration ranges from \$10,000 to \$15,000. This includes:

- **Requirements Gathering and Planning:** Detailed analysis of ACME-1's needs and creating a comprehensive integration plan.
- **API Development:** Coding and configuring the necessary API connections.
- **Testing and Quality Assurance:** Rigorous testing to ensure smooth data flow and system stability.

- **Deployment:** Launching the integrated system.

Ongoing Maintenance

Ongoing maintenance is crucial for sustained performance. The estimated monthly cost is \$500. This covers:

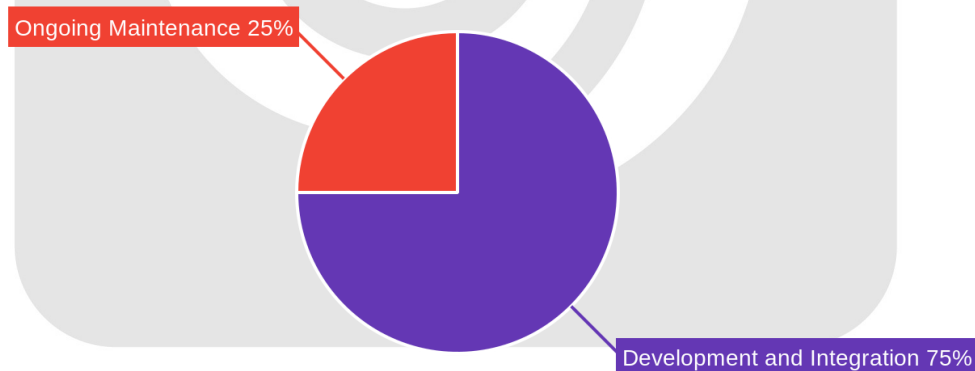
- **Server Costs:** Maintaining the necessary server infrastructure.
- **API Usage Fees:** Potential charges from Shopify based on API call volume.
- **Monitoring and Support:** Continuous monitoring and technical assistance.
- **Updates and Security Patches:** Applying updates and security measures.

Cost-Saving Strategies

We propose utilizing serverless functions to reduce infrastructure costs. This approach optimizes resource allocation and minimizes expenses.

Cost Distribution

The following chart illustrates the distribution of project costs:



Detailed Cost Breakdown

Item	Estimated Cost
Development and Integration	\$10,000 - \$15,000
Server Costs (Monthly)	\$200
API Usage Fees (Monthly)	\$300
Total (Monthly)	Approximately \$500

Security and Compliance Considerations

Data security and compliance are paramount for this Shopify API integration project. Docupal Demo, LLC will implement robust measures to protect sensitive information throughout the integration process and beyond. We are committed to adhering to industry best practices and relevant regulations.

Data Protection

We will encrypt all data both in transit and at rest. This encryption will safeguard sensitive information such as customer data and financial details. Our security protocols align with PCI DSS standards to ensure secure handling of payment information. We will employ industry-standard encryption algorithms and secure key management practices. Access to sensitive data will be strictly controlled using role-based access control (RBAC) principles. Only authorized personnel will have access, and their activities will be logged and monitored. Regular security audits will be conducted to identify and address potential vulnerabilities.

Compliance Adherence

This integration will comply with all applicable industry standards and regulations. Specifically, we will adhere to:

- **PCI DSS:** Ensuring secure handling of credit card information.
- **GDPR:** Protecting the privacy of individuals within the European Union.
- **CCPA:** Respecting the data privacy rights of California residents.



We will implement necessary mechanisms to obtain and manage user consent, as required by GDPR and CCPA. We will also provide tools for users to access, modify, or delete their personal data. Our systems will be designed to comply with data breach notification requirements, ensuring prompt reporting of any security incidents. Docupal Demo, LLC will maintain comprehensive documentation of our security and compliance measures, which will be available for review. Our team is trained on the latest security threats and compliance requirements. We will stay up-to-date with evolving regulations and adapt our practices accordingly.

Team and Expertise

Docupal Demo, LLC brings a dedicated team to the ACME-1 Shopify API integration project. Our team's expertise ensures a smooth and successful integration, aligning with your business objectives. We have extensive experience with Shopify API integrations for e-commerce businesses like yours.

Key Team Members

- **[Name], Project Manager:** [Name] will oversee all aspects of the project. This includes planning, execution, and communication. [Name] will serve as the main point of contact for ACME-1.
- **[Name], Lead Developer:** [Name] will lead the development efforts. This includes API integration, custom application development, and data migration. [Name]'s focus is on delivering a robust and scalable solution.
- **[Name], Security Architect:** [Name] will ensure the security of the integrated system. This includes data protection, access control, and compliance with security standards. [Name] will implement security best practices throughout the project.

Our team's collective experience in Shopify API integrations ensures that we can handle the complexities of this project. We are committed to providing ACME-1 with a high-quality, secure, and efficient solution.



Risks and Mitigation Strategies

Integrating Shopify API comes with inherent risks. We have identified key areas and propose mitigation strategies.

Data Synchronization Risks

Data synchronization between Shopify and ACME-1's existing systems carries the risk of failure. This can lead to inconsistencies and operational disruptions. To mitigate this, we will implement robust error handling and logging mechanisms. We will also use monitoring tools to detect anomalies in data flow. In the event of a synchronization failure, we will have manual data synchronization procedures in place as a fallback. Rollback plans are ready if needed.

Security Vulnerabilities

Security vulnerabilities are a significant concern with any API integration. Unauthorized access and data breaches could compromise sensitive information. We will conduct regular security audits to identify and address potential weaknesses. We will use monitoring tools to detect suspicious activity. Our team will follow security best practices, including encryption and secure authentication protocols.

Monitoring and Management

We will actively monitor the integration's performance and security. Our monitoring tools will provide real-time insights into data synchronization processes. They will also detect security threats. Regular security audits will help us proactively address potential vulnerabilities. We will promptly address any identified issues.

Fallback Options

Despite our best efforts, unforeseen issues may arise. We have several fallback options. Manual data synchronization will ensure business continuity if automated synchronization fails. Rollback plans will allow us to revert to a previous stable state if needed. We will document all procedures to ensure a smooth and efficient response to any disruption.



Conclusion and Next Steps

Project Impact

The Shopify API integration promises to streamline Acme Inc.'s operations and create a better experience for your customers. The integration will connect your current systems with Shopify, centralizing data and automating key processes. This means less manual work, fewer errors, and faster response times.

Initiating the Project

To move forward with the Shopify API integration, the following steps are necessary:

1. **Proposal Acceptance:** Please review and sign this proposal to indicate your approval and commitment to the project.
2. **API Credential Provision:** Grant Docupal Demo, LLC access to your Shopify API credentials. This will allow our team to begin the integration process.
3. **Project Kick-off Meeting:** We will schedule a kick-off meeting to discuss project timelines, communication protocols, and any specific requirements.

Feedback and Approval

We encourage you to share any feedback or questions you may have. You can reach out to the project manager via email or schedule a meeting to discuss the proposal in more detail. Your input is valuable to ensuring a successful integration.

