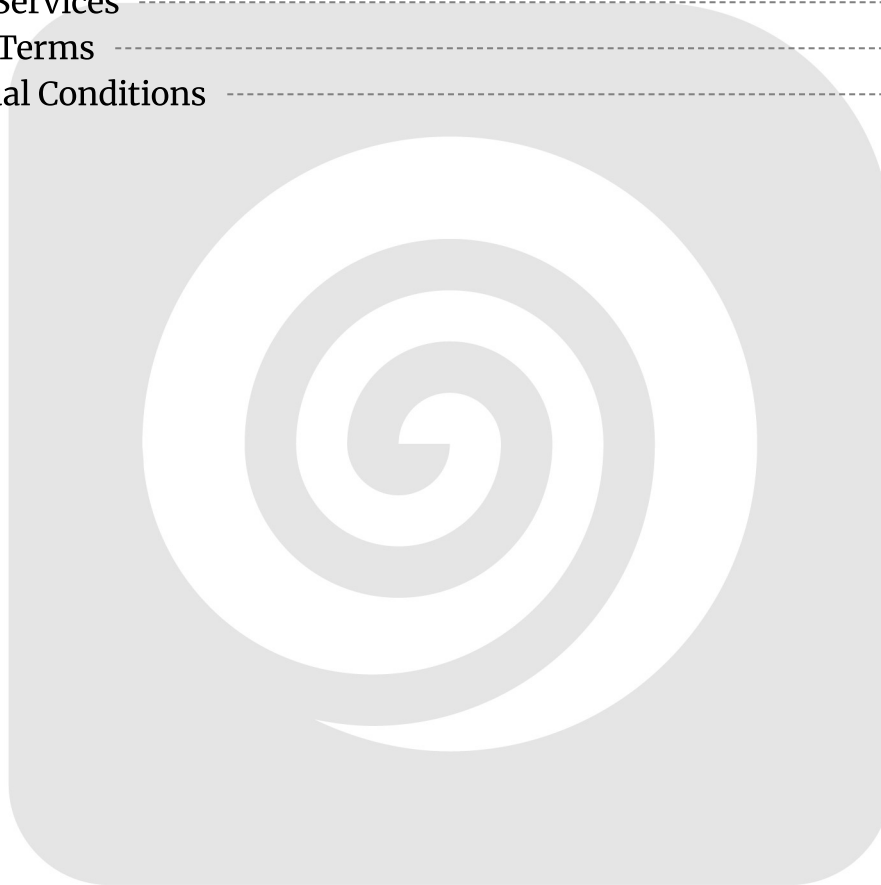


Table of Contents

Introduction	3
Project Overview	3
Stakeholders	3
Expected Benefits	3
Current System Assessment	4
Platform and Infrastructure	4
Data Architecture	4
Custom Features and Integrations	4
Migration Strategy and Approach	5
Phased Migration Methodology	5
Tools and Technologies	6
Data Integrity	6
Project Timeline and Milestones	7
Data Migration Plan	7
Data Migration Scope	7
Data Mapping and Transformation	8
Data Validation and Accuracy	8
Backup and Rollback Procedures	8
Plugin and Theme Compatibility Analysis	9
Plugin Compatibility	9
Theme Compatibility	9
Testing and Quality Assurance	9
Testing Scenarios	10
Bug Tracking and Resolution	10
SEO and Data Preservation Strategy	10
URL and Metadata Preservation	11
Post-Migration SEO Monitoring	11
Risk Analysis and Mitigation	11
Potential Risks	11
Mitigation Strategies	12
Risk Monitoring	12
Risk Matrix	12
Post-Migration Support and Maintenance	12



Support Services	13
Issue Escalation and Resolution	13
Maintenance Schedules	13
About Us	13
About Docupal Demo, LLC	13
Our Expertise	14
Successful Migrations	14
Pricing and Terms	14
Project Cost	14
Optional Services	14
Payment Terms	15
Contractual Conditions	15



Introduction

This document presents a comprehensive proposal from DocuPal Demo, LLC to Acme, Inc (ACME-1) for the migration of your existing e-commerce platform to WooCommerce. Our aim is to provide a seamless transition that minimizes disruption to your business operations while upholding the integrity of your valuable data.

Project Overview

The core objective of this migration is to enhance ACME-1's online presence with WooCommerce's robust and scalable platform. This transition will provide ACME-1 with increased flexibility, a wider selection of themes and plugins, and ultimately, lower maintenance costs.

Stakeholders

Key stakeholders in this project include the ACME-1 E-commerce Team, the DocuPal Demo, LLC Project Team, and ACME-1's IT Department. Each stakeholder will play a crucial role in ensuring the successful execution of the migration.

Expected Benefits

By migrating to WooCommerce, ACME-1 can expect:

- **Increased Scalability:** Accommodate future growth and traffic demands.
- **Improved Flexibility:** Customize the platform to meet specific business needs.
- **Lower Maintenance Costs:** Reduce operational expenses associated with platform maintenance.
- **Wider Range of Resources:** Access a vast ecosystem of plugins and themes to enhance functionality and design.

Current System Assessment

ACME-1 currently operates its online store on a Magento 1 platform. This platform hosts all of ACME-1's product catalog, customer data, and order information. The existing system includes several custom extensions and integrations tailored to



ACME-1's specific business needs.

Platform and Infrastructure

ACME-1's Magento 1 instance is hosted on a dedicated server environment. The server configuration includes a Linux operating system, Apache web server, MySQL database, and PHP. The current infrastructure supports ACME-1's average traffic, but it is nearing its capacity limits, especially during peak seasons. The Magento 1 platform is no longer supported with security updates, posing a potential risk.

Data Architecture

The Magento 1 database contains critical business data, including:

- **Product Catalog:** Detailed product information with attributes, images, and pricing.
- **Customer Data:** Customer profiles, addresses, order history, and account information.
- **Order Data:** Order details, payment information, shipping addresses, and order status.
- **Inventory Data:** Stock levels, product availability, and warehouse information.
- **Promotional Data:** Discount rules, coupon codes, and promotional campaigns.

Custom Features and Integrations

ACME-1's Magento 1 store includes several custom features and third-party integrations:

- **Custom Theme:** A unique design and user interface tailored to ACME-1's brand.
- **Payment Gateway Integration:** Integration with Authorize.net for processing credit card payments.
- **Shipping Carrier Integration:** Real-time shipping rate calculations via UPS.
- **ERP Integration:** Synchronization of product, inventory, and order data with ACME-1's Enterprise Resource Planning (ERP) system.
- **Custom Reporting:** Tailored reports for sales, inventory, and customer behavior.

These customizations are essential for ACME-1's day-to-day operations and must be carefully considered during the migration process.



Migration Strategy and Approach

We will employ a phased migration approach to ensure a smooth transition of ACME-1's WooCommerce store, minimizing disruption and maximizing data integrity. This approach involves migrating data and functionalities in stages, allowing for thorough testing and validation at each step.

Phased Migration Methodology

Our phased migration will consist of the following key stages:

- 1. Planning and Preparation:** This initial phase involves a detailed assessment of the existing ACME-1 e-commerce platform, including its data structure, custom functionalities, and third-party integrations. We will define the scope of the migration, establish clear objectives, and develop a comprehensive migration plan.
- 2. Data Migration:** This phase focuses on transferring product data, customer information, order history, and other essential data from the current platform to the new WooCommerce environment. We will use Cart2Cart and FG WooCommerce Migrator to automate much of the data transfer process. Data validation scripts, pre-migration audits, and secure transfer protocols will be used.
- 3. Theme and Plugin Integration:** This phase involves installing and configuring the chosen WooCommerce theme and plugins to replicate the desired look, feel, and functionality of ACME-1's existing online store.
- 4. Custom Functionality Migration:** This stage addresses any custom functionalities or integrations that require specific attention. Our development team will either migrate or re-implement these features within the WooCommerce environment.
- 5. Testing and Validation:** Rigorous testing will be conducted throughout the migration process to ensure data accuracy, functionality, and performance. This includes unit testing, integration testing, and user acceptance testing (UAT).



6. **Deployment and Launch:** Once all testing is complete and the new WooCommerce store meets the defined requirements, we will deploy the migrated site to a live environment. A soft launch approach is recommended, initially directing a small percentage of traffic to the new site to monitor performance and identify any potential issues.
7. **Post-Launch Support and Monitoring:** Following the launch, we will provide ongoing support and monitoring to address any issues that may arise and ensure the smooth operation of the new WooCommerce store.

Tools and Technologies

We will leverage the following tools and technologies to facilitate the migration process:

- **Cart2Cart:** An automated migration tool that simplifies the transfer of data between e-commerce platforms.
- **FG WooCommerce Migrator:** A WordPress plugin specifically designed for migrating data to WooCommerce.
- **Data Validation Scripts:** Custom scripts to verify the accuracy and completeness of migrated data.

Data Integrity

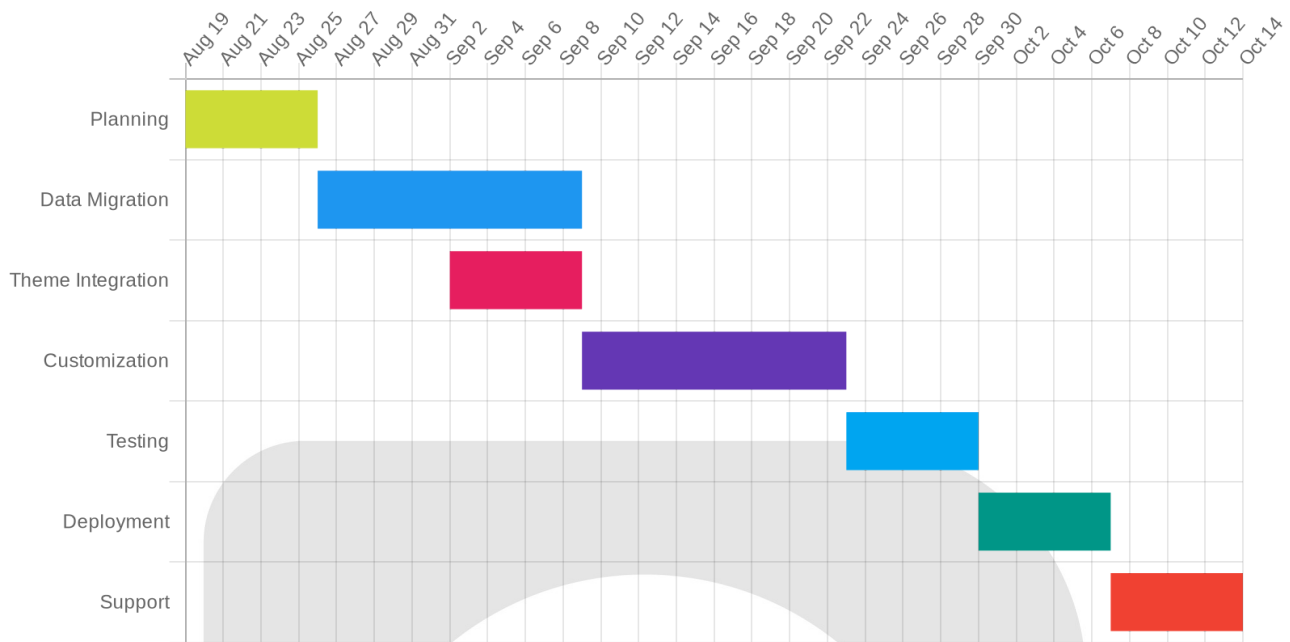
Maintaining data integrity throughout the migration process is critical. We will implement the following measures:

- **Pre-Migration Data Audits:** Conducting thorough audits of the existing data to identify any inconsistencies or errors.
- **Data Validation Scripts:** Utilizing scripts to validate the accuracy and completeness of data after migration.
- **Secure Transfer Protocols:** Employing secure protocols (e.g., HTTPS, SFTP) to protect data during transfer.

Project Timeline and Milestones

The following Gantt chart provides an estimated timeline for the migration project:





Data Migration Plan

This section details our plan for migrating your data to the new WooCommerce platform. We will migrate products, customers, orders, product categories, and reviews. Our approach ensures data integrity and minimal disruption to your business.

Data Migration Scope

The data migration will encompass the following:

- **Products:** All product data, including descriptions, images, pricing, and variations.
- **Customers:** Customer accounts, addresses, order history, and contact information.
- **Orders:** Complete order details, including status, payment information, and shipping addresses.
- **Product Categories:** The existing category structure and assignments.
- **Reviews:** All product reviews and ratings.

Data Mapping and Transformation

We will map your existing data fields to the corresponding fields in the WooCommerce database. This process includes:

- Identifying data discrepancies and inconsistencies.
- Transforming data to meet WooCommerce requirements.
- Ensuring data types are compatible.

Data Validation and Accuracy

To guarantee data accuracy post-migration, we will implement the following validation processes:

- **Data Sampling:** We will select random samples of data to verify accuracy.
- **Reconciliation Reports:** We will generate reports to compare data between the old and new systems.
- **User Acceptance Testing (UAT):** We will involve your team in testing the migrated data to ensure it meets your expectations.

Backup and Rollback Procedures

Before starting the migration, we will perform a full site backup. This includes:

- Complete database snapshot.
- Copies of all website files.

In the event of an issue, we have rollback scripts to revert to the previous state.

Plugin and Theme Compatibility Analysis

A critical aspect of the WooCommerce migration is assessing the compatibility of ACME-1's existing plugins and themes with the new platform. We will conduct a thorough analysis to identify potential conflicts or issues that may arise during or after the migration.



Plugin Compatibility

Our team will meticulously review each installed plugin, verifying its compatibility with the latest version of WooCommerce. This review will include:

- Checking the plugin developer's website for compatibility statements.
- Consulting the WooCommerce community forums for reported issues.
- Performing compatibility tests in a staging environment.

We will address any identified plugin incompatibilities through updates, replacements with compatible alternatives, or custom code adaptations. Addressing incompatibilities early mitigates potential risks.

Theme Compatibility

The existing theme will require customization to ensure seamless integration with WooCommerce and to maintain ACME-1's branding.

- We will customize the theme to match existing branding and functionality.
- Our team will address any theme conflicts.
- We will also address any data format issues.

This includes adapting the theme's templates, styles, and scripts to align with WooCommerce's structure and functionality. We will address any conflicts that arise to deliver a visually appealing and fully functional online store.

Testing and Quality Assurance

We will rigorously test the migrated WooCommerce store to ensure a smooth transition and optimal performance for ACME-1. Our QA process includes several phases, each designed to validate specific aspects of the new platform.

Testing Scenarios

Our testing strategy encompasses:

- **Functional Testing:** We will verify that all features work as expected. This includes product browsing, adding items to the cart, checkout processes, user account management, and administrative functions.



- **Performance Testing:** We will assess the store's speed and stability under various load conditions. This ensures the site can handle expected traffic without performance degradation. Key metrics include page load times, server response times, and transaction success rates.
- **Security Testing:** We will conduct security checks to identify and address potential vulnerabilities. This includes testing for common web application security flaws and ensuring data protection measures are effective.
- **User Acceptance Testing (UAT):** ACME-1's team will participate in UAT to validate that the migrated store meets their specific requirements and business needs.

Bug Tracking and Resolution

We will use Jira to track and manage any bugs or issues identified during testing. Detailed issue logs will provide comprehensive information for developers to resolve problems efficiently. Regular status meetings will keep all stakeholders informed of progress and any roadblocks encountered. The resolution process involves:

1. **Identification:** Bugs are identified during testing and documented in Jira.
2. **Prioritization:** Bugs are prioritized based on severity and impact.
3. **Assignment:** Bugs are assigned to developers for resolution.
4. **Resolution:** Developers fix the bugs and submit the changes for review.
5. **Verification:** The QA team verifies the fix and closes the issue in Jira.

SEO and Data Preservation Strategy

This section details our strategy for maintaining ACME-1's search engine optimization (SEO) rankings and preserving critical data during the WooCommerce migration. We understand the importance of a seamless transition that minimizes disruption to your online visibility and ensures data integrity.

URL and Metadata Preservation

To avoid any negative impact on your search engine rankings, we will implement 301 redirects from your old platform URLs to the corresponding new WooCommerce URLs. This ensures that search engines correctly index your new site and that users are seamlessly redirected to the correct pages. We will also create a detailed URL mapping to track all redirects and ensure accuracy.



Furthermore, we will use metadata preservation plugins to carefully transfer all existing metadata, including title tags, meta descriptions, and image alt tags, to the new WooCommerce platform. This helps maintain your current search engine rankings and ensures that your products and pages are easily discoverable.

Post-Migration SEO Monitoring

After the migration, we will closely monitor key SEO metrics to assess the impact of the transition. This includes tracking organic traffic, keyword rankings, and conversion rates. We will use this data to identify any potential issues and make necessary adjustments to optimize your SEO performance.

Risk Analysis and Mitigation

This section identifies potential risks associated with the WooCommerce migration project for ACME-1 and outlines mitigation strategies. We are committed to minimizing disruptions and ensuring a smooth transition.

Potential Risks

We have identified three key risk areas: data loss, system downtime, and security vulnerabilities. Data loss could occur during the transfer process, potentially impacting product information, customer data, and order history. System downtime during the migration could disrupt ACME-1's online sales and operations. Finally, the introduction of new code or systems could create security vulnerabilities, exposing sensitive data to unauthorized access.

Mitigation Strategies

To address the risk of data loss, we will implement robust data backup procedures before, during, and after the migration. We will also use data validation techniques to ensure data integrity throughout the process. To minimize system downtime, we will perform the migration during off-peak hours and utilize redundant servers to ensure continuous operation. We will also develop a rollback plan to quickly revert to the previous system if any critical issues arise. Security vulnerabilities will be addressed through rigorous security testing, code reviews, and the implementation of industry-standard security practices. A communication plan will be put in place to keep all stakeholders informed of the migration's progress and any potential issues.



Risk Monitoring

We will conduct daily monitoring of the migration process to identify and address any potential issues promptly. Weekly status reports will be provided to ACME-1, outlining the progress of the migration and any risks encountered. We will also hold regular risk assessment meetings with the project team to proactively identify and mitigate potential risks.

Risk Matrix

Risk	Impact	Likelihood	Mitigation Strategy
Data Loss	High	Medium	Data backups, data validation
System Downtime	High	Medium	Off-peak migration, redundant servers, rollback plan
Security Vulnerability	High	Low	Security testing, code reviews, industry-standard security practices

Post-Migration Support and Maintenance

We understand that ongoing support and maintenance are crucial for the continued success of your WooCommerce store. Docupal Demo, LLC will provide comprehensive post-migration support to ensure a smooth transition and optimal performance.

Support Services

We offer 3 months of post-launch support. This includes bug fixes and resolution of any issues that may arise after the migration. Our dedicated support team will be available to address your concerns and provide timely assistance.

Issue Escalation and Resolution

We have defined escalation paths to ensure efficient issue resolution. Our service level agreements (SLAs) outline response times and resolution targets. You can be confident that your issues will be addressed promptly and effectively.



Maintenance Schedules

To maintain the health and security of your WooCommerce store, we recommend the following maintenance schedule:

- **Weekly Security Updates:** We will perform weekly security updates to protect your store from vulnerabilities.
- **Monthly Performance Reviews:** We will conduct monthly performance reviews to identify and address any performance bottlenecks.
- **Annual System Audits:** We recommend annual system audits to ensure your store is running optimally and securely.

About Us

About Docupal Demo, LLC

Docupal Demo, LLC, located at 23 Main St, Anytown, CA 90210, is a United States-based company specializing in e-commerce solutions. Our core competencies include e-commerce migrations, WooCommerce development, and custom plugin development. We help businesses like ACME-1 enhance their online presence and improve their sales performance. Our base currency is USD.

Our Expertise

We possess extensive expertise in WooCommerce. We are certified WooCommerce developers with a proven track record of successful migrations and custom plugin development. Our team is well-versed in the intricacies of the platform, ensuring a smooth and efficient migration process.

Successful Migrations

We have a strong portfolio of successful migration projects. For example, we migrated "XYZ Store" to WooCommerce. This resulted in a 30% increase in their sales within three months. We are confident in our ability to deliver similar results for ACME-1.



Pricing and Terms

This section outlines the costs associated with the WooCommerce migration project for ACME-1. All prices are in USD, Docupal Demo, LLC's base currency.

Project Cost

The total cost for the WooCommerce migration is \$[TBD]. This includes project management, data migration, theme integration, testing, and deployment.

Optional Services

We offer additional services to enhance your new WooCommerce store:

- **Custom Plugin Development:** Prices vary based on complexity. We will provide a separate quote for each custom plugin.
- **Ongoing Maintenance:** We offer monthly maintenance packages starting at \$[TBD]/month. This includes security updates, plugin updates, and basic support.
- **SEO Optimization:** Our SEO optimization package starts at \$[TBD]. This includes keyword research, on-page optimization, and performance monitoring.

Payment Terms

We require a 50% upfront payment upon signing the contract. The remaining 50% is due upon successful completion of the migration and your final approval. Payments can be made via wire transfer, or credit card. Late payments may incur a [TBD]% interest fee per month.

Contractual Conditions

This proposal is valid for 30 days from the date of issue. The project timeline is estimated to be [TBD] weeks, starting from the date of the initial payment. Any changes to the project scope may result in additional costs and adjustments to the timeline. A detailed contract outlining the full scope of work, responsibilities, and liabilities will be provided upon acceptance of this proposal.

