

Table of Contents

| | |
|---|-----------|
| Introduction | 3 |
| Addressing Document Management Challenges | 3 |
| Package Goals and Objectives | 3 |
| Target Audience | 3 |
| Market and Industry Analysis | 4 |
| Laravel Package Market Analysis | 4 |
| Competitive Landscape | 4 |
| Market Opportunity | 4 |
| Technical Architecture and Design | 5 |
| Package Structure | 5 |
| Core Laravel Features and Design Patterns | 5 |
| Detailed Component Interaction | 6 |
| Development Roadmap and Milestones | 6 |
| Project Timeline and Deliverables | 6 |
| Phase 1: Planning | 6 |
| Phase 2: Development | 7 |
| Phase 3: Testing | 7 |
| Phase 4: Deployment | 7 |
| Testing and Quality Assurance | 8 |
| Test Types | 8 |
| Code Quality and Performance | 8 |
| Testing Tools and Environment | 8 |
| Documentation and User Support | 9 |
| Documentation Formats | 9 |
| User Support and Community Engagement | 9 |
| Budget and Resource Allocation | 9 |
| Development Costs | 10 |
| Resource Allocation | 10 |
| Third-Party Services | 10 |
| Maintenance | 10 |
| Security Considerations | 10 |
| Data Protection | 10 |
| Laravel Security Features | 11 |



| | |
|--|-----------|
| Vulnerability Monitoring and Response | 11 |
| Deployment and Maintenance Strategy | 11 |
| Deployment | 11 |
| Version Control and Backward Compatibility | 11 |
| Ongoing Maintenance and Updates | 12 |
| Team Expertise and Roles | 12 |
| Core Development Team | 12 |
| Collaboration and Communication | 12 |
| Conclusion and Next Steps | 12 |
| Next Steps | 13 |



Introduction

This document outlines a proposal from Docupal Demo, LLC for the development of a custom Laravel package for Acme, Inc (ACME-1). Our aim is to provide ACME-1 with a robust solution for document generation and management, directly within your Laravel applications.

Addressing Document Management Challenges

Many businesses using Laravel face challenges in efficiently creating, managing, and securing their documents. This package directly addresses these pain points by offering a streamlined, automated solution.

Package Goals and Objectives

The primary goal of this package is to automate document creation workflows within ACME-1's Laravel environment. We will achieve this by:

- Providing a user-friendly interface for managing document templates.
- Automating the document generation process using your defined templates and data.
- Ensuring secure document storage and retrieval, adhering to industry best practices.

Target Audience

This package is specifically designed for Laravel developers and businesses like ACME-1 that require efficient and reliable document generation and management capabilities. It empowers your team to focus on core business logic, rather than getting bogged down in manual document handling.

Market and Industry Analysis

The Laravel package ecosystem is vibrant and continuously expanding. Developers actively seek tools to streamline development and enhance application functionality. Currently, there is a growing demand for specialized solutions that address specific business needs.



Laravel Package Market Analysis

The market demonstrates a need for document management solutions seamlessly integrated within the Laravel framework. Many existing solutions are often complex, lack intuitive interfaces, or require extensive configuration. This creates an opportunity for a user-friendly, fully integrated package. ACME-1 can leverage this gap by offering a solution tailored to the needs of Laravel developers.

Competitive Landscape

Several document management packages exist for PHP and Laravel. However, a comprehensive solution that combines ease of use, robust features, and seamless Laravel integration is lacking. Potential competitors include:

- General-purpose PHP document management libraries
- Laravel wrappers for existing document storage services
- Custom-built document management solutions

ACME-1's success hinges on providing a superior user experience and tighter Laravel integration compared to these alternatives.

Market Opportunity

The demand for efficient document management is rising. Businesses need to manage increasing volumes of digital documents effectively. A Laravel package that simplifies this process offers significant value. Key advantages include:

- Reduced development time
- Lower maintenance costs
- Improved data security

The following chart illustrates the increasing popularity of Laravel packages over the past five years:

This growth underscores the increasing reliance on Laravel packages to accelerate development and enhance application capabilities. A well-designed document management package will address a clear market need and capitalize on the expanding Laravel ecosystem.



Technical Architecture and Design

This section details the technical architecture and design of the Laravel package Docupal Demo, LLC will develop for ACME-1. The package will be built using industry-standard Laravel practices to ensure maintainability, scalability, and ease of integration.

Package Structure

The package will follow a modular structure, separating concerns into distinct directories. This promotes code organization and reusability. The core directories will include:

- **src/**: Contains the primary source code of the package, including controllers, models, and other logic.
- **config/**: Holds the package's configuration file, allowing customization of settings.
- **database/**: Includes migrations and seeders for database schema management.
- **resources/**: Contains views, language files, and assets.
- **routes/**: Defines the package's routes.

Core Laravel Features and Design Patterns

The package will leverage the following Laravel features and design patterns:

- **Service Providers**: Service providers will be used to bootstrap the package, register bindings into the service container, and handle event listeners. This allows for deferred loading and loose coupling.
- **Facades**: Facades will provide a static interface to the package's services, simplifying access and improving code readability.
- **Eloquent Models**: Eloquent models will be used for interacting with the database. They provide an object-relational mapping (ORM) that simplifies database operations.
- **Blade Components**: Blade components will be utilized to create reusable UI elements. This promotes consistency and reduces code duplication in the views.



Detailed Component Interaction

The package's components will interact as follows:

1. A user request is routed to a controller.
2. The controller interacts with the model to retrieve or update data.
3. The model interacts with the database.
4. The controller passes data to a Blade component for rendering the view.
5. Facades will be used to access package specific functionalities.
6. Service Providers will handle registering package functionalities.

Development Roadmap and Milestones

Project Timeline and Deliverables

Docupal Demo, LLC will execute the ACME-1 Laravel package development in four major phases: Planning, Development, Testing, and Deployment. Each phase includes specific milestones and deliverables to ensure project success.

Phase 1: Planning

- **Start Date:** 2025-08-19
- **End Date:** 2025-08-26
- **Milestones:** Requirements gathering, system design, and project planning.
- **Deliverables:** Project plan document, system design document, and requirements specification.

Phase 2: Development

- **Start Date:** 2025-08-27
- **End Date:** 2025-09-16
- **Milestones:** Core functionality development, API integration, and module creation.
- **Deliverables:** Source code, API documentation, and development environment setup.

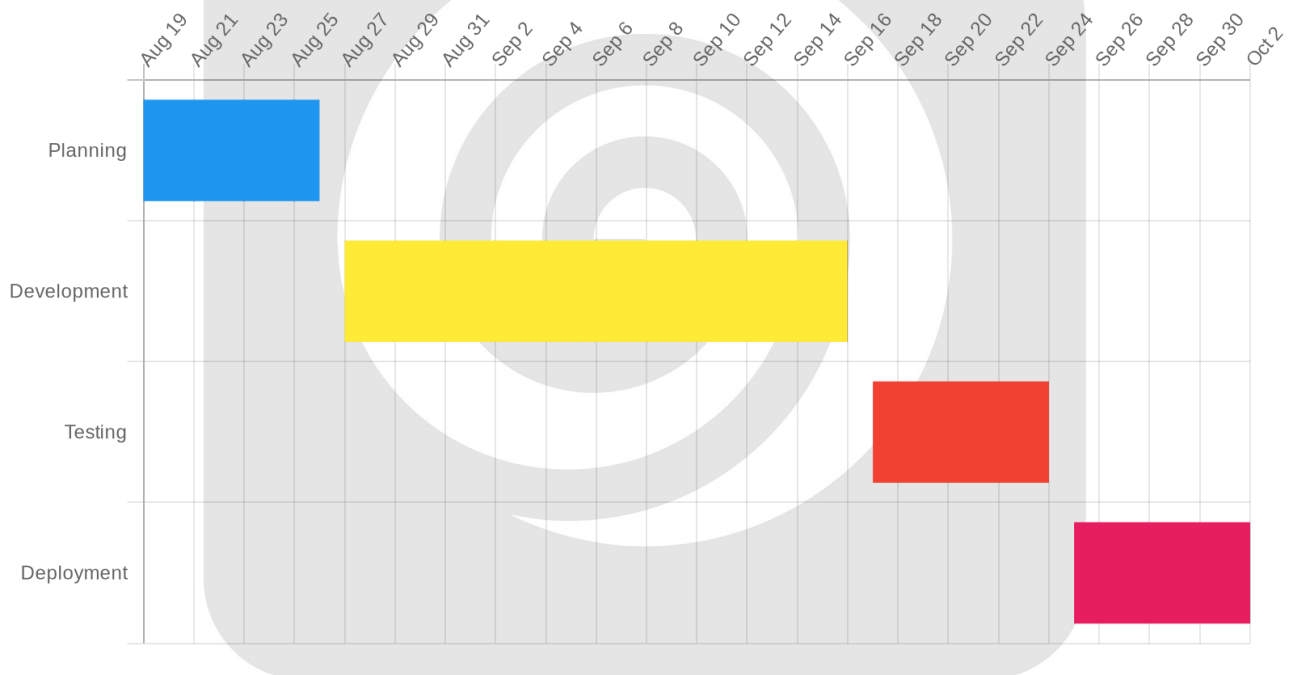


Phase 3: Testing

- **Start Date:** 2025-09-17
- **End Date:** 2025-09-24
- **Milestones:** Unit testing, integration testing, and user acceptance testing (UAT).
- **Deliverables:** Test reports, bug fixes, and UAT sign-off.

Phase 4: Deployment

- **Start Date:** 2025-09-25
- **End Date:** 2025-10-02
- **Milestones:** Deployment to production environment, user training, and initial monitoring.
- **Deliverables:** Deployed package, user manual, and monitoring reports.



Testing and Quality Assurance

We will implement a comprehensive testing strategy to ensure the reliability, stability, and performance of the Laravel package. Our approach incorporates multiple testing layers and quality assurance practices.

Test Types

- **Unit Tests:** We will create focused unit tests for individual components and functions. These tests will confirm that each part of the package works as expected in isolation.
- **Integration Tests:** Integration tests will verify the interactions between different parts of the package. This ensures that components work together correctly.
- **End-to-End Tests:** Using Laravel Dusk, we will create end-to-end tests that simulate user interactions. These tests validate the package's overall functionality from a user perspective.

Code Quality and Performance

We are committed to high-quality code and optimal performance. To achieve this, we will use the following:

- **Code Reviews:** Our senior developers will conduct thorough code reviews to identify potential issues and ensure adherence to coding standards.
- **Static Analysis Tools:** Static analysis tools will automatically detect code smells, bugs, and security vulnerabilities.
- **Performance Profiling:** We will use performance profiling tools to identify and resolve performance bottlenecks.

Testing Tools and Environment

We will use the following tools and environments for testing:

- **PHPUnit:** A widely used unit testing framework for PHP.
- **Pest:** An elegant PHP Testing Framework with a focus on simplicity.
- **Laravel Dusk:** Provides an expressive, easy-to-use browser automation and testing API.

These tools and practices will result in a robust and well-tested Laravel package for ACME-1.



Documentation and User Support

We will provide comprehensive documentation to ensure ACME-1 can effectively use the Laravel package. This will include detailed installation guides, practical usage examples, and complete API documentation.

Documentation Formats

The documentation will be available in multiple formats for easy access. These formats include Markdown and HTML. We may also create a dedicated documentation website for a more interactive experience.

User Support and Community Engagement

Docupal Demo, LLC will offer a dedicated support channel to address ACME-1's specific questions and issues. A community forum will also be available. This forum will encourage users to share knowledge and solutions. We will regularly update the package based on user feedback and community discussions. This iterative approach will improve the package over time.

Budget and Resource Allocation

Docupal Demo, LLC will allocate resources to ensure the successful development and deployment of the Laravel package for ACME-1. Our budget covers development, testing, and initial maintenance.

Development Costs

The estimated cost for development is based on the project scope and includes:

- **Software Architecture & Design:** \$4,000
- **Package Development & Implementation:** \$9,000
- **Testing & Quality Assurance:** \$3,000
- **Project Management & Communication:** \$2,000

The total estimated development cost is \$18,000.



Resource Allocation

Our team will consist of experienced Laravel developers, QA engineers, and a project manager. We anticipate dedicating approximately 400 man-hours to this project.

Third-Party Services

A license for a PDF generation library may be required. The cost is not included in the initial budget. If a license is required, we will present ACME-1 with options and associated costs for approval before procurement.

Maintenance

The budget includes a 30-day period of post-deployment maintenance and support. Further maintenance agreements can be discussed separately.

Security Considerations

Security is a key consideration in the development of this Laravel package. We will implement several measures to protect sensitive data and prevent vulnerabilities.

Data Protection

We will protect sensitive data through encryption and strict access controls. Only authorized users and systems will be able to access sensitive information.

Laravel Security Features

The package will leverage Laravel's built-in security features. These include CSRF protection, XSS prevention, and safeguards against SQL injection attacks. Using these established features helps ensure a robust security posture.

Vulnerability Monitoring and Response

We will actively monitor for potential vulnerabilities. Regular security audits will be conducted to identify and address weaknesses. A bug bounty program will be established to encourage external security researchers to report any issues they



find. This layered approach to security ensures comprehensive protection for the package and its users.

Deployment and Maintenance Strategy

We will ensure smooth deployment and ongoing maintenance for the Laravel package developed for ACME-1. Our strategy covers deployment methods, version control, and long-term support.

Deployment

We support multiple deployment options. The primary methods include:

- **Laravel Forge:** Streamlines server provisioning and deployment.
- **Envoyer:** Enables zero-downtime deployments.
- **Custom Deployment Scripts:** Allows tailored deployment processes based on specific server configurations and ACME-1 requirements.

Version Control and Backward Compatibility

We will use semantic versioning. This clearly communicates the type and scope of changes in each release. We will also provide detailed release notes. These notes will describe changes, potential backward compatibility issues, and upgrade instructions. This approach helps ACME-1 manage updates effectively.

Ongoing Maintenance and Updates

Our maintenance plan includes:

- **Regular Security Patches:** Addressing vulnerabilities to keep the package secure.
- **Feature Enhancements:** Adding new functionality and improving existing features based on feedback and evolving needs.
- **Compatibility Updates:** Ensuring compatibility with new Laravel versions and related technologies.



Team Expertise and Roles

Our team possesses extensive experience in Laravel, PHP, and related web technologies. We are well-equipped to handle all aspects of the Laravel package development for ACME-1.

Core Development Team

Our development team is structured to ensure efficient package creation. Each member brings unique skills to the project.

- **Lead Developer:** Responsible for overall package architecture and code quality.
- **Senior PHP Developer:** Focuses on implementing core package functionality using PHP and Laravel.
- **Quality Assurance Tester:** Dedicated to rigorous testing and ensuring a stable, bug-free package.

Collaboration and Communication

We follow agile methodologies, ensuring flexibility and responsiveness. Daily stand-up meetings are held to track progress and address any roadblocks. This allows for continuous communication and seamless collaboration throughout the development lifecycle.

Conclusion and Next Steps

DocuPal Demo, LLC is dedicated to providing ACME-1 with a top-tier Laravel package. This package will address your document management requirements effectively.

Next Steps

Upon approval of this proposal, we will take the following actions:

- **Project Kickoff:** We will schedule an initial kickoff meeting. This meeting will align our teams.
- **Planning Phase:** Following the kickoff, we will immediately begin the planning phase. This ensures a smooth and efficient development process.

