

# Table of Contents

<b>Introduction</b>	<b>3</b>
Overview	3
Purpose	3
Objectives	3
<b>Scope of Services</b>	<b>3</b>
React Maintenance Services for ACME-1	4
Core Maintenance Activities	4
Technical Support	4
<b>Maintenance Strategy and Process</b>	<b>4</b>
Approach and Workflow	4
Tools and Methodologies	5
Quality Assurance	5
<b>Timeline and Milestones</b>	<b>5</b>
Project Timeline	5
Schedule and Milestones	5
Gantt Chart	6
<b>Cost Estimate and Pricing</b>	<b>6</b>
Maintenance Packages	6
Standard Maintenance Package	7
Pricing Details	7
Payment Schedule and Terms	7
Pricing Breakdown	7
<b>Team and Roles</b>	<b>8</b>
Team Structure	8
Roles and Responsibilities	8
<b>Risk Management</b>	<b>9</b>
Potential Risks	9
Mitigation Strategies	9
<b>Client Responsibilities</b>	<b>10</b>
Prompt Communication	10
System Access	10
Feedback Integration	10
<b>Conclusion and Next Steps</b>	<b>10</b>





# Introduction

## Overview

This document outlines a comprehensive React maintenance proposal from Docupal Demo, LLC to Acme, Inc (ACME-1). Our goal is to ensure the long-term health and optimal performance of your React applications. This includes maintaining stability, enhancing performance, and fortifying security measures.

## Purpose

This proposal details our approach to providing ongoing maintenance and support. It addresses key aspects such as proactive monitoring, timely updates, bug fixes, and security enhancements. Our services are designed to minimize downtime and maximize the value of your React applications.

## Objectives

The primary objectives of this React maintenance plan are:

- To maintain the stability and reliability of ACME-1's React applications.
- To improve application performance and user experience.
- To implement security best practices and protect against potential vulnerabilities.
- To provide timely support and issue resolution.
- To ensure ACME-1's React applications remain up-to-date with the latest technologies.

## Scope of Services

### React Maintenance Services for ACME-1

Docupal Demo, LLC will provide comprehensive React maintenance services for ACME-1. Our services ensure your application remains stable, secure, and performs optimally. We address potential issues proactively. Our team is based in the United States. We operate from 23 Main St, Anytown, CA 90210.



## Core Maintenance Activities

We perform several core maintenance activities. These keep your React application healthy:

- **Bug Fixing:** We rapidly identify and resolve bugs. This minimizes disruption and ensures smooth operation.
- **Code Updates:** We apply necessary code updates. This addresses emerging issues and improves functionality.
- **Security Patching:** We implement security patches promptly. This safeguards your application against vulnerabilities.
- **Dependency Updates:** We manage and update dependencies. This maintains compatibility and leverages the latest improvements.
- **Performance Optimization:** We continuously optimize performance. This ensures your application remains responsive and efficient.

## Technical Support

Our team offers ongoing technical support. We address your questions and concerns promptly. This ensures you receive the assistance you need. We aim to resolve issues efficiently and effectively. We want to minimize downtime.

# Maintenance Strategy and Process

Our maintenance strategy ensures the reliability and optimal performance of your React applications. We use a proactive approach, combining scheduled maintenance with responsive support to address issues promptly.

## Approach and Workflow

We conduct scheduled maintenance activities bi-weekly. These include code reviews, performance monitoring, dependency updates, and security patching. For issue tracking and resolution, we utilize Jira. Resolution times are based on the severity levels defined in our Service Level Agreement (SLA). Emergency support is available 24/7 to handle critical issues that may arise outside of scheduled maintenance windows. Our team follows a standardized workflow for each maintenance task: assessment, planning, execution, testing, and deployment.



## Tools and Methodologies

Our team leverages a suite of industry-standard tools to streamline the maintenance process. React Developer Tools aid in debugging and performance optimization. We use npm for package management, ensuring that dependencies are up-to-date and secure. Git is used for version control, enabling seamless collaboration and rollback capabilities. Custom monitoring scripts provide real-time insights into application health and performance.

## Quality Assurance

We integrate quality assurance into every stage of the maintenance lifecycle. This includes unit testing, integration testing, and user acceptance testing (UAT) to ensure changes are stable and meet requirements. We also conduct thorough code reviews to identify potential issues early on. This multi-faceted approach minimizes disruptions and ensures the delivery of high-quality, reliable software.

# Timeline and Milestones

## Project Timeline

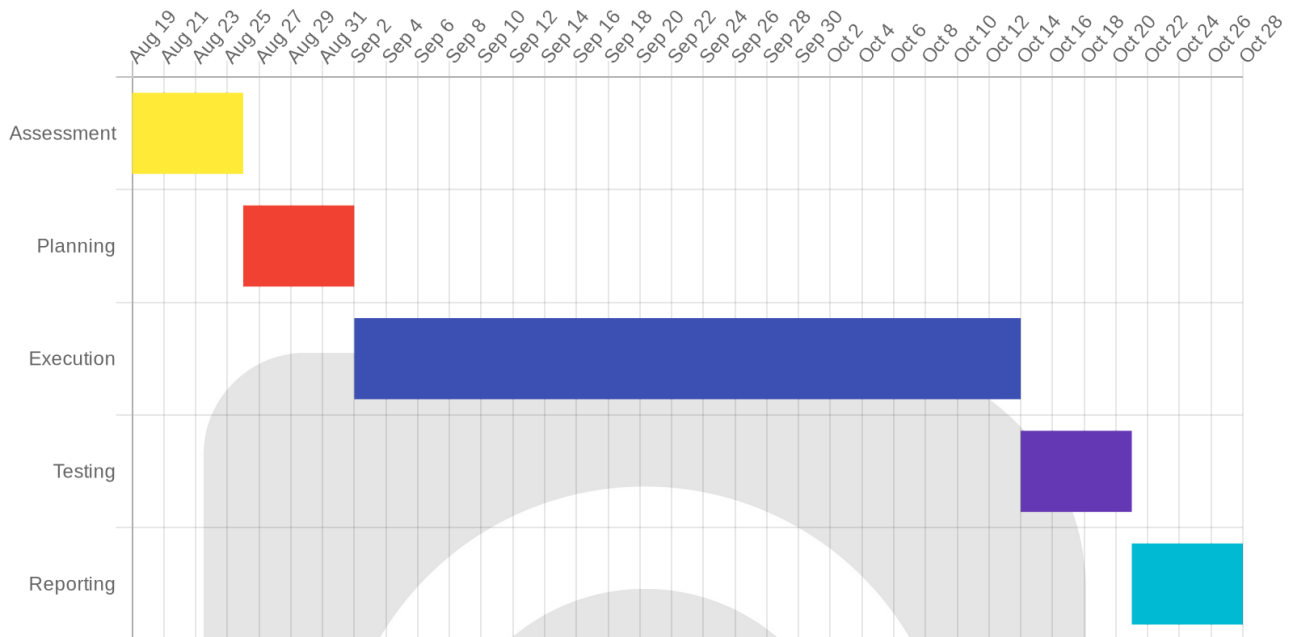
The React maintenance project will proceed through five major phases. These phases are Assessment, Planning, Execution, Testing, and Reporting. We will monitor progress via weekly reports. Monthly review meetings with Acme, Inc. will also occur.

## Schedule and Milestones

Task	Start Date	End Date
Assessment	2025-08-19	2025-08-26
Planning	2025-08-26	2025-09-02
Execution	2025-09-02	2025-10-14
Testing	2025-10-14	2025-10-21
Reporting	2025-10-21	2025-10-28



## Gantt Chart



## Cost Estimate and Pricing

This section outlines the costs associated with our React maintenance services for ACME-1. Our pricing model is designed to be transparent and provide you with predictable costs for ongoing support and improvements. All prices are in USD.

### Maintenance Packages

We offer a range of maintenance packages tailored to meet your specific needs. We will focus on the "Standard" package initially discussed.

### Standard Maintenance Package

The Standard package includes core maintenance tasks such as bug fixes, security updates, and performance monitoring. It also provides a set amount of development hours for minor enhancements and feature requests.

## Pricing Details

The monthly cost for the Standard Maintenance Package is \$4,000. This price includes:

- **Bug Fixes:** Addressing and resolving any defects that arise in the React application.
- **Security Updates:** Applying the latest security patches and updates to protect against vulnerabilities.
- **Performance Monitoring:** Continuously monitoring the application's performance and identifying areas for optimization.
- **Minor Enhancements:** Implementing small improvements and new features to enhance the user experience. This includes 20 hours of development time. Additional hours are billed at \$150/hour.

## Payment Schedule and Terms

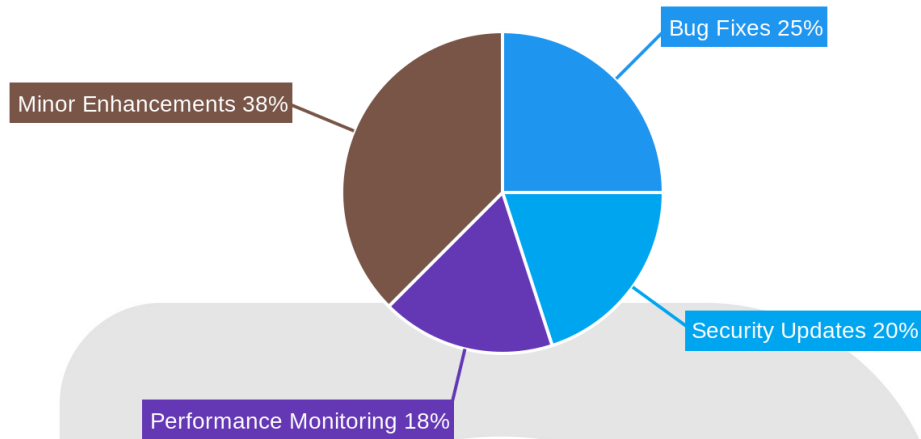
- **Invoicing:** Monthly invoices will be issued at the beginning of each month.
- **Payment Terms:** Payment is due within 30 days of the invoice date.
- **Contract Length:** The initial contract term is 12 months, with options for renewal.
- **Escalation:** Prices are fixed for the initial term, subject to review upon renewal.

## Pricing Breakdown

Item	Price
Bug Fixes	\$1,000
Security Updates	\$800
Performance Monitoring	\$700
Minor Enhancements (20 hrs)	\$1,500
<b>Total Monthly Cost</b>	<b>\$4,000</b>







## Team and Roles

### Team Structure

Our team at Docupal Demo, LLC is structured to provide comprehensive React maintenance services for ACME-1. We maintain clear communication through daily stand-ups, weekly team meetings, and a dedicated Slack channel.

### Roles and Responsibilities

- **Project Manager:** Oversees the entire maintenance process, ensuring timely delivery and effective communication with ACME-1.
- **Lead React Developer:** Provides technical guidance, oversees code quality, and resolves complex issues.
- **React Developers:** Implement bug fixes, develop new features, and maintain existing code.
- **QA Engineer:** Performs thorough testing to ensure the quality and stability of the React application.

Each team member is committed to delivering high-quality maintenance services.



# Risk Management

Maintaining React applications carries inherent risks. These risks can impact project timelines, budgets, and the overall stability of ACME-1's application. Docupal Demo, LLC will proactively manage these risks using industry-standard practices.

## Potential Risks

We have identified the following potential risks:

- **Code Conflicts:** Merging updates can sometimes create conflicts, especially when multiple developers are working on the same codebase.
- **Unexpected Downtime:** Deploying updates or encountering unforeseen issues can lead to application downtime, affecting users.
- **Third-Party Library Vulnerabilities:** React projects often rely on external libraries, which can contain security vulnerabilities that expose the application to threats.

## Mitigation Strategies

Docupal Demo, LLC will employ these strategies to mitigate the risks:

- **Version Control:** Using Git for version control to track changes, manage conflicts, and revert to previous versions if needed.
- **Rollback Procedures:** Having well-defined rollback procedures in place allows quick restoration of the application to a stable state in case of a failed update.
- **Regular Security Audits:** Docupal Demo, LLC will conduct regular security audits and vulnerability scans to identify and address potential security weaknesses in third-party libraries.

# Client Responsibilities

Acme, Inc. plays a vital role in ensuring the success of our React maintenance efforts. Your active participation and timely support are essential.



## Prompt Communication

We require prompt feedback on reported issues. This helps us resolve problems efficiently. Your insights into the ACME-1 system's behavior are invaluable.

## System Access

Access to your internal systems is necessary for our team. This enables us to diagnose and address technical issues effectively. We adhere to strict security protocols.

## Feedback Integration

We value your input. Regular feedback sessions will be scheduled. Your suggestions will shape our maintenance plans. This collaborative approach ensures the solution meets your needs.

## Conclusion and Next Steps

Our React maintenance proposal offers ACME-1 a clear path to ensuring the reliability, security, and peak performance of their applications. Proactive maintenance minimizes downtime and reduces costs, safeguarding ACME-1's investment.

## Agreement

To move forward with this maintenance plan, please sign and return the attached acceptance form. Upon receipt of the signed form, Docupal Demo, LLC will initiate the onboarding process. We are ready to begin as soon as ACME-1 is.

