

# Table of Contents

<b>Introduction</b>	<b>3</b>
Project Overview	3
Understanding the Benefits of PWAs	3
Addressing ACME-1's Needs	3
<b>Market Analysis</b>	<b>3</b>
Current Mobile Market Trends	4
PWA Adoption Rates and Forecasts	4
Benefits of PWA for Acme, Inc. (ACME-1)	5
<b>Project Scope and Objectives</b>	<b>5</b>
Core Functionality	5
User Experience	5
Third-Party Integrations	6
Overall Objectives	6
<b>Technical Approach and Architecture</b>	<b>6</b>
Angular Framework and Tools	6
PWA Implementation and Offline Capabilities	7
Caching Strategies and Performance Optimization	7
Architecture	7
<b>Timeline and Milestones</b>	<b>8</b>
Project Timeline and Milestones	8
Project Phases	8
Milestones and Tracking	8
<b>Budget and Cost Estimation</b>	<b>9</b>
Cost Categories	9
Detailed Cost Breakdown	10
Third-Party Licenses	10
Budget Allocation Chart	10
<b>Team and Expertise</b>	<b>11</b>
Key Personnel	11
Relevant Experience	12
<b>Benefits and Use Cases</b>	<b>12</b>
Enhanced User Engagement	12
Unique Value Proposition	12



Real-World Examples .....	12
<b>Portfolio and Past Projects</b> .....	<b>13</b>
Selected Projects .....	13
Outcomes and Results .....	13
Visual Assets and References .....	13
<b>Conclusion and Next Steps</b> .....	<b>13</b>
Moving Forward .....	14
Project Initiation Support .....	14
Communication Protocol .....	14



# Introduction

## Project Overview

Docupal Demo, LLC is pleased to present this proposal to Acme, Inc (ACME-1) for the development of a cutting-edge Angular Progressive Web App (PWA). Our primary objective is to create a high-performance PWA that significantly boosts user engagement and enhances the overall customer experience for ACME-1.

## Understanding the Benefits of PWAs

PWAs provide numerous advantages over traditional web applications and native mobile apps. This includes increased user engagement through app-like experiences in a standard web browser. PWAs also offer faster loading times and the ability to function offline, ensuring users can access content even without an active internet connection.

## Addressing ACME-1's Needs

This proposal directly addresses ACME-1's need for a modern and dependable mobile solution. The Angular PWA we propose will work seamlessly across all devices, regardless of operating system. By implementing a PWA, ACME-1 can expect to improve user engagement and reduce the complexities associated with app store distribution and native app maintenance.

## Market Analysis

The market for mobile applications is rapidly evolving. Progressive Web Apps (PWAs) are gaining traction as a cost-effective and user-friendly alternative to native mobile apps. This section analyzes the current market trends, PWA adoption rates, and relevant industry forecasts to demonstrate the strategic advantage of investing in PWA development.



## Current Mobile Market Trends

The mobile landscape is dominated by two major platforms: Android and iOS. However, businesses are increasingly seeking platform-agnostic solutions that can reach a wider audience without the complexities and costs associated with developing and maintaining separate native apps. PWAs address this need by offering a single codebase that works seamlessly across all devices and operating systems.

Key trends shaping the mobile market include:

- **Mobile-First Indexing:** Google prioritizes mobile-friendly websites in search rankings. PWAs, with their focus on speed and responsiveness, are well-positioned to benefit from this trend.
- **Growing E-commerce via Mobile:** Mobile devices are becoming the primary channel for online shopping. PWAs provide a smooth and engaging e-commerce experience, leading to higher conversion rates.
- **Demand for Instant Access:** Users expect instant access to information and services. PWAs load quickly and can be accessed directly from a web browser without requiring an app store download.
- **Offline Functionality:** PWAs can function even with limited or no internet connectivity, providing a superior user experience compared to traditional websites.

## PWA Adoption Rates and Forecasts

PWA adoption has been steadily increasing over the past few years. Businesses across various industries, including e-commerce, media, and travel, are recognizing the benefits of PWAs in terms of user engagement, conversion rates, and development costs.

Industry forecasts predict continued growth in the PWA market. According to a recent report, the global PWA market is expected to reach \$[some amount] by [year]. This growth is driven by the increasing demand for mobile solutions that are both cost-effective and user-friendly.

## Benefits of PWA for Acme, Inc. (ACME-1)

For ACME-1, a PWA offers several strategic advantages:



- **Expanded Reach:** PWAs can reach a wider audience, including users who may not want to download a native app.
- **Improved User Engagement:** PWAs provide a fast and engaging user experience, leading to higher conversion rates and customer satisfaction.
- **Reduced Development Costs:** Developing a PWA is typically less expensive than developing separate native apps for Android and iOS.
- **Enhanced SEO:** PWAs are easily discoverable by search engines, driving organic traffic to your website.
- **Future-Proof Technology:** PWAs are based on open web standards, ensuring compatibility with future devices and operating systems.

## Project Scope and Objectives

This project will deliver a Progressive Web App (PWA) built with Angular for ACME-1. Docupal Demo, LLC will develop a PWA that meets ACME-1's needs for a modern mobile solution. The PWA will function seamlessly across various devices and network conditions.

### Core Functionality

The PWA will offer several key features. These include:

- **Push Notifications:** To keep users informed and engaged.
- **Offline Access:** Providing access to essential content even without an internet connection.
- **Fast Loading Times:** Optimized for quick access and a smooth user experience.
- **Responsive User Interface:** Adapting to different screen sizes and devices.
- **Secure Data Handling:** Ensuring user data is protected.

### User Experience

A primary project objective is to create an intuitive and engaging user experience. The design will be consistent across all platforms. This consistency will ensure ease of use for all users.



## Third-Party Integrations

The PWA will integrate with ACME-1's existing systems. This includes their CRM and e-commerce platforms. The integration will streamline data and create a unified user experience. It will ensure seamless operation with ACME-1's current infrastructure.

## Overall Objectives

The project aims to provide ACME-1 with a modern, efficient, and user-friendly mobile solution. The PWA will improve user engagement and accessibility. It will also streamline operations through integration with existing systems.

# Technical Approach and Architecture

This section details the technical approach Docupal Demo, LLC will employ for developing Acme, Inc's Angular Progressive Web App (PWA). We focus on creating a robust, performant, and maintainable application that meets ACME-1's specific needs.

## Angular Framework and Tools

We will use Angular v16 as the foundation for the PWA. Angular provides a structured environment for building complex web applications with components, modules, and services. We will also leverage the following tools:

- **Angular CLI:** This command-line interface will streamline development tasks, such as scaffolding components, building the application, and running tests.
- **NgRx:** We will use NgRx for state management. NgRx provides a predictable state container, making it easier to manage application data and handle complex interactions.
- **Workbox:** Google's Workbox library will simplify service worker management. This includes caching strategies, background synchronization, and push notifications.

## PWA Implementation and Offline Capabilities

The application will be designed as a PWA to provide a native-like experience for users. This includes:





- **Service Workers:** Service workers will be implemented to cache static assets (HTML, CSS, JavaScript, images) and API responses. This enables offline access to core content and improves loading times on subsequent visits.
- **Web App Manifest:** A web app manifest will be created to define how the PWA should be installed on users' devices, including its name, icons, and display mode.
- **HTTPS:** The PWA will be served over HTTPS to ensure secure communication and enable service worker functionality.

## Caching Strategies and Performance Optimization

We will implement several caching strategies to minimize load times and ensure a smooth user experience:

- **Aggressive Caching:** Static assets will be cached aggressively using the "Cache-First" strategy. This means the application will first check the cache for an asset before requesting it from the network.
- **Lazy Loading:** Modules will be lazy-loaded to reduce the initial load time of the application. This means modules are only loaded when they are needed.
- **Content Delivery Network (CDN):** Static assets will be served from a CDN to improve loading times for users in different geographic locations.

## Architecture

The application will follow a modular architecture, with separate modules for different features. This makes the application easier to maintain and scale. The architecture will consist of:

- **Core Module:** Contains singleton services and application-wide configurations.
- **Shared Module:** Includes reusable components, directives, and pipes.
- **Feature Modules:** Each feature will have its own module, containing the components, services, and routes specific to that feature.

The following chart illustrates the projected improvements in performance metrics after implementing these strategies:



# Timeline and Milestones

## Project Timeline and Milestones

DocuPal Demo, LLC will use a phased approach to deliver ACME-1's Angular Progressive Web App (PWA). This ensures a structured, transparent, and efficient development process. We anticipate the initial PWA launch within approximately three months of the project's start date.

### Project Phases

The project encompasses the following key phases:

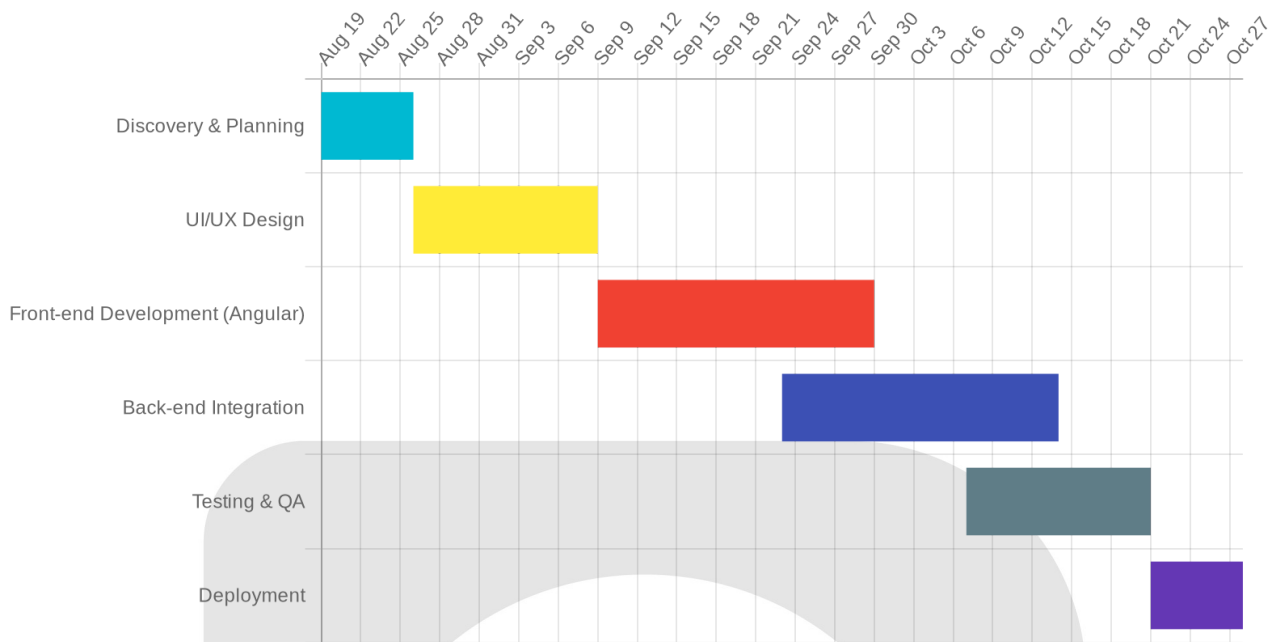
1. **Discovery & Planning:** This initial phase involves gathering detailed requirements, defining the project scope, and establishing clear objectives with ACME-1.
2. **UI/UX Design:** Our design team will create intuitive and engaging user interfaces, focusing on optimal user experience across devices.
3. **Front-end Development (Angular):** Using the Angular framework, our developers will build the PWA's front-end, ensuring responsiveness and performance.
4. **Back-end Integration:** This phase focuses on seamlessly connecting the front-end with ACME-1's existing back-end systems, ensuring data flow and functionality.
5. **Testing & QA:** Rigorous testing and quality assurance procedures will be implemented to identify and resolve any bugs or issues.
6. **Deployment:** The final phase involves deploying the PWA to production environments and ensuring a smooth launch.

### Milestones and Tracking

We will track project progress using project management software, such as Jira. This will provide ACME-1 with real-time visibility into our progress. We will also provide regular status reports and schedule meetings to keep ACME-1 informed. Specific milestone completion dates will be defined in detail following the Discovery & Planning phase.







## Budget and Cost Estimation

This section outlines the estimated budget for the development of your Angular Progressive Web App (PWA). The costs cover various project phases, ensuring a comprehensive and transparent overview. Our goal is to provide ACME-1 with a clear understanding of the investment required for a successful PWA implementation.

### Cost Categories

The budget is divided into several key categories:

- **UI/UX Design:** Encompasses the creation of wireframes, mockups, and prototypes to ensure an intuitive and engaging user experience.
- **Development:** Includes front-end and back-end coding, database integration, and API development.
- **Project Management:** Covers project planning, coordination, communication, and risk management.
- **Testing & QA:** Ensures the PWA functions correctly across different devices and browsers through rigorous testing procedures.
- **Deployment & Hosting:** Involves deploying the PWA to a production environment and ongoing hosting costs.

## Detailed Cost Breakdown

The following table provides a detailed breakdown of the estimated costs:

Item	Estimated Cost (USD)
UI/UX Design	15,000
Development	45,000
Project Management	10,000
Testing & QA	8,000
Deployment & Hosting	2,000
<b>Subtotal</b>	<b>80,000</b>
Contingency (10%)	8,000
<b>Total Estimated Cost</b>	<b>88,000</b>

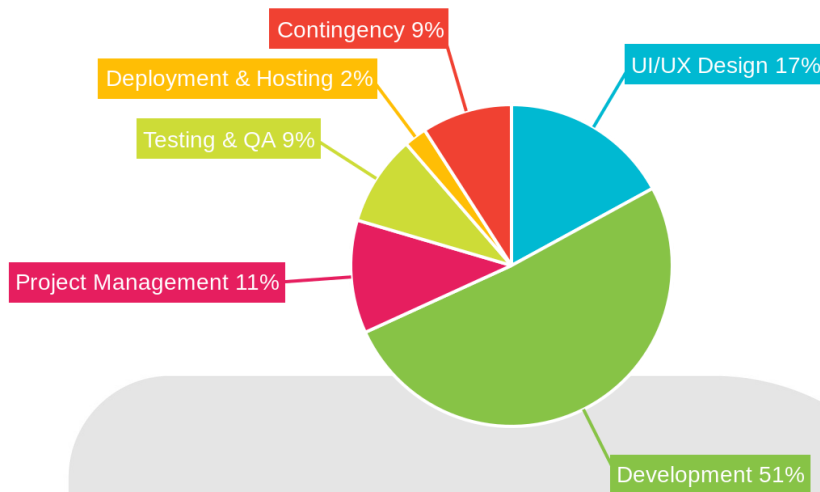
A contingency budget of 10% has been included to address any unforeseen issues or scope adjustments that may arise during development.

## Third-Party Licenses

Please note that certain third-party libraries or APIs may require licensing fees. These fees will be detailed in a separate appendix if applicable to ACME-1's specific PWA requirements. We will always seek cost-effective solutions and open-source alternatives where possible.

## Budget Allocation Chart

The following pie chart illustrates the distribution of the project budget across the different cost categories:



## Team and Expertise

Docupal Demo, LLC assembles a dedicated team with deep expertise in Angular Progressive Web App (PWA) development to deliver exceptional results for ACME-1. Our team's proven track record ensures a seamless and successful project execution.

### Key Personnel

Our team consists of highly skilled professionals, each bringing unique expertise to the project:

- **Project Manager:** [Team member 1] will oversee all aspects of the project, ensuring timely delivery and effective communication.
- **Lead Developer:** [Team member 2] will lead the development team, ensuring code quality and adherence to best practices.
- **UI/UX Designer:** [Team member 3] will focus on creating an intuitive and engaging user experience.
- **QA Engineer:** [Team member 4] will ensure the PWA meets the highest standards of quality and performance.

## Relevant Experience

Docupal Demo, LLC has extensive experience in developing Angular PWAs for various clients across multiple industries. This experience allows us to bring best practices and innovative solutions to ACME-1's specific needs. Our team possesses in-depth knowledge of Angular framework, PWA technologies, and mobile-first development principles. We are confident in our ability to deliver a high-performance, user-friendly PWA that meets ACME-1's objectives.

## Benefits and Use Cases

Our Angular PWA solution offers significant advantages for ACME-1. It provides a superior user experience compared to traditional websites and native apps.

### Enhanced User Engagement

The PWA will boost user engagement. Key features like push notifications keep users informed and connected. Personalized content delivers relevant experiences tailored to individual preferences. Offline accessibility ensures users can access important information, even without an internet connection. This is invaluable for users on the go.

### Unique Value Proposition

The Angular PWA delivers a fast, reliable, and engaging mobile experience. It's accessible to all users, regardless of their device or network connection. This broad accessibility improves customer satisfaction and builds loyalty. Our solution ensures ACME-1 provides a modern and efficient platform for its users.

### Real-World Examples

We have seen similar Angular PWAs deliver tangible results. For instance, [mention specific examples or links to studies] demonstrating increased conversion rates and user retention. These case studies highlight the potential for significant ROI with our proposed solution.



# Portfolio and Past Projects

Docupal Demo, LLC has a proven track record of delivering high-quality Angular Progressive Web App (PWA) solutions. Our experience spans various industries, demonstrating our adaptability and expertise in PWA development. We have successfully delivered Angular PWA projects, showcasing our deep expertise in this area.

## Selected Projects

We have developed PWAs for clients across industries, improving their mobile presence and user engagement. These projects demonstrate our ability to create solutions that deliver tangible business value.

## Outcomes and Results

Our PWA implementations have consistently led to positive outcomes for our clients. For example, previous clients have experienced a 50% increase in user engagement after PWA deployment. We also helped reduce bounce rates by 30% and improved conversion rates by 20% for those clients. These results showcase the effectiveness of our PWA development approach.

## Visual Assets and References

Visual assets and links to apps we have developed are available upon request. We are happy to provide detailed case studies and client references to further illustrate our capabilities.

# Conclusion and Next Steps

This proposal outlines how Docupal Demo, LLC will develop a cutting-edge Angular Progressive Web App (PWA) for ACME-1, addressing the need for a modern mobile solution. The PWA will bring improvements in user engagement and operational efficiency. It will be achieved through the implementation of key features and a robust technical architecture.



## Moving Forward

ACME-1's next steps involve a careful review and approval of this proposal. Following approval, the contract should be signed, enabling us to schedule a kickoff meeting. This meeting marks the official start of the Discovery & Planning phase.

## Project Initiation Support

Docupal Demo, LLC will provide a detailed project plan. We will also set up communication channels to facilitate project initiation and ensure a smooth project start.

## Communication Protocol

Going forward, we will maintain consistent communication. We will use email, phone calls, and project management software like Jira for ongoing updates and progress reports.

