

Table of Contents

Introduction	3
Project Overview	3
Proposal Intent	3
Market Analysis	3
Ecommerce Industry Trends	3
Target Market Demographics	4
Competitor Landscape	4
Technology Stack and Architecture	5
System Architecture	5
Scalability and Security	5
Third-Party Integrations	5
Features and Functionality	6
Core Ecommerce Functionalities	6
Optimizing User Experience and Performance	6
Progressive Web App (PWA) Features	7
Additional Features	7
Project Timeline and Milestones	7
Project Phases	8
Project Schedule	8
Communication and Tracking	9
Budget Estimation	9
Cost Breakdown	9
Cost Distribution	10
Team and Expertise	11
Our Team	11
Quality and Innovation	12
Security and Compliance	12
Data Protection	12
Regulatory Compliance	13
Risk Mitigation	13
Maintenance and Support	13
Support Packages	13
Updates and Bug Fixes	14



Service Level Agreement (SLA)	14
Conclusion and Next Steps	14
Next Steps	14
Getting in Touch	15



Introduction

Project Overview

Docupal Demo, LLC presents this proposal to Acme, Inc. (ACME-1) for the development of a cutting-edge ecommerce platform. Our goal is to build a robust, scalable, and secure solution tailored to enhance ACME-1's online presence and drive significant sales growth. We understand ACME-1's need for a modern platform that delivers an exceptional customer experience while streamlining operational efficiency.

Proposal Intent

This document outlines our proposed approach to address these key challenges. It details our understanding of ACME-1's requirements and presents a comprehensive strategy for developing a customized Node.js ecommerce solution. We aim to equip ACME-1 with the tools necessary to thrive in today's competitive online marketplace. This includes improved customer engagement, increased conversion rates, and a future-proof architecture ready to adapt to evolving business needs.

Market Analysis

The ecommerce market continues to experience robust growth, driven by increasing internet penetration and evolving consumer preferences. ACME-1's entry into the B2C ecommerce space positions it to capitalize on these favorable trends.

Ecommerce Industry Trends

Several key trends are shaping the ecommerce landscape:

- **Mobile Commerce:** A growing percentage of online transactions occur on mobile devices, necessitating a mobile-first approach to website design and functionality.
- **Personalization:** Customers expect personalized experiences, including product recommendations and targeted marketing.
- **Social Commerce:** Social media platforms are becoming increasingly important channels for product discovery and purchase.



- **Sustainability:** Environmentally conscious consumers are seeking sustainable products and brands.
- **Alternative Payment:** Customers are increasingly using alternative payment methods like digital wallets and cryptocurrencies.

Target Market Demographics

Understanding ACME-1's target market is crucial for tailoring its ecommerce strategy. Key demographic factors include:

- **Age:** Understanding the age range of target customers helps tailor product offerings and marketing messages.
- **Location:** Geographic location influences product preferences and shipping logistics.
- **Income:** Income levels impact purchasing power and price sensitivity.
- **Lifestyle:** Lifestyle factors, such as hobbies and interests, can inform product selection and marketing campaigns.

Competitor Landscape

A thorough analysis of ACME-1's competitors is essential for identifying opportunities and threats. Key considerations include:

- **Market Share:** Identifying the dominant players in the market and their market share.
- **Product Offerings:** Analyzing the products and services offered by competitors.
- **Pricing Strategies:** Understanding how competitors price their products.
- **Marketing Tactics:** Evaluating the marketing strategies employed by competitors.
- **Strengths and Weaknesses:** Identifying the strengths and weaknesses of competitors to inform ACME-1's competitive advantage.

The bar chart illustrates the projected growth of the ecommerce market from 2020 to 2025, showcasing a consistent upward trend.



Technology Stack and Architecture

We propose a robust and scalable architecture for ACME-1's e-commerce platform, leveraging Node.js and a suite of modern technologies. The core of the application will be built using Express.js, a flexible Node.js web application framework, providing a solid foundation for routing, middleware, and API development. The front-end user interface will be developed using React, a JavaScript library for building dynamic and interactive user interfaces. Data will be stored and managed using MongoDB, a NoSQL database, chosen for its flexibility and scalability in handling e-commerce data.

System Architecture

```
+-----+ +-----+ +-----+ | Client (Web |-----  
>| Node.js with |----->| MongoDB | | Browser/Mobile | | Express.js | | Database |  
+-----+ +-----+ +-----+ ^ | | | v +-----  
-----+ +-----+ | React Front- | | Third-party | | End | |  
Services/APIs | +-----+ +-----+
```

Scalability and Security

Scalability will be ensured through load balancing across multiple Node.js instances. Database sharding will be implemented to distribute data across multiple MongoDB servers, improving performance and availability. Security is a paramount concern. We will implement HTTPS for secure communication between clients and the server. Sensitive data will be encrypted at rest and in transit. Regular security audits will be conducted to identify and address potential vulnerabilities.

Third-Party Integrations

To enhance the functionality of the e-commerce platform, we plan to integrate with several third-party services and APIs. Payment gateway integration will include Stripe and PayPal to provide customers with flexible payment options. Shipping provider integration will include UPS and FedEx to automate shipping calculations and tracking. For marketing purposes, we will integrate with Mailchimp for email marketing campaigns. These integrations will be implemented using secure and reliable APIs, ensuring data integrity and security.



Features and Functionality

This section details the features and functionality of the Node.js ecommerce platform we will develop for ACME-1. Our focus is on delivering a robust, user-friendly, and high-performing online store.

Core Ecommerce Functionalities

The platform will include these core features:

- **Product Catalog Management:** A comprehensive system for managing products, including adding, editing, and categorizing items. This will allow ACME-1 to easily maintain its product offerings.
- **Shopping Cart:** An intuitive shopping cart that allows users to add, remove, and update items before proceeding to checkout.
- **Checkout Process:** A streamlined and secure checkout process with clear steps for shipping, payment, and order confirmation.
- **User Accounts:** Secure user accounts with features for registration, login, profile management, and order history.
- **Order Management:** A system for ACME-1 to view, process, and manage customer orders efficiently.

Optimizing User Experience and Performance

We will implement several strategies to optimize user experience and performance:

- **Responsive Design:** The platform will be fully responsive, ensuring optimal viewing and interaction across all devices (desktops, tablets, and smartphones).
- **Image Optimization:** Images will be optimized for web delivery to reduce page load times without sacrificing visual quality.
- **Caching Strategies:** We will implement caching mechanisms to store frequently accessed data, reducing database load and improving response times.
- **Code Minification:** JavaScript and CSS code will be minified to reduce file sizes and improve loading speed.



Progressive Web App (PWA) Features

To enhance the mobile experience, we will develop a Progressive Web App (PWA). This will provide users with an app-like experience on their mobile devices, including features such as:

- **Offline Access:** Access to previously viewed content even without an internet connection.
- **Push Notifications:** Ability to send targeted notifications to users, such as order updates or promotional offers.
- **Add to Home Screen:** Users can add the PWA to their home screen for easy access, similar to a native app.

Additional Features

In addition to the core functionalities, the platform will also include:

- **Secure Payment Gateway Integration:** Integration with a secure payment gateway (e.g., Stripe, PayPal) to process online transactions safely.
- **Admin Panel:** A user-friendly admin panel for managing products, orders, users, and other platform settings.
- **Search Functionality:** Robust search functionality to allow users to easily find products.
- **Customer Support Features:** Options for integrating customer support tools such as live chat or a ticketing system.
- **Inventory Management:** Tools to track and manage product inventory levels.
- **SEO Optimization:** Basic SEO optimization to improve search engine visibility.

Project Timeline and Milestones

This section outlines the project's timeline, key milestones, and deliverables for the development of ACME-1's e-commerce platform. We will use a phased approach to ensure a structured and efficient development process.

Project Phases

The project will consist of six key phases: Discovery, Design, Development, Testing, Deployment, and Maintenance. Each phase has specific goals and deliverables.



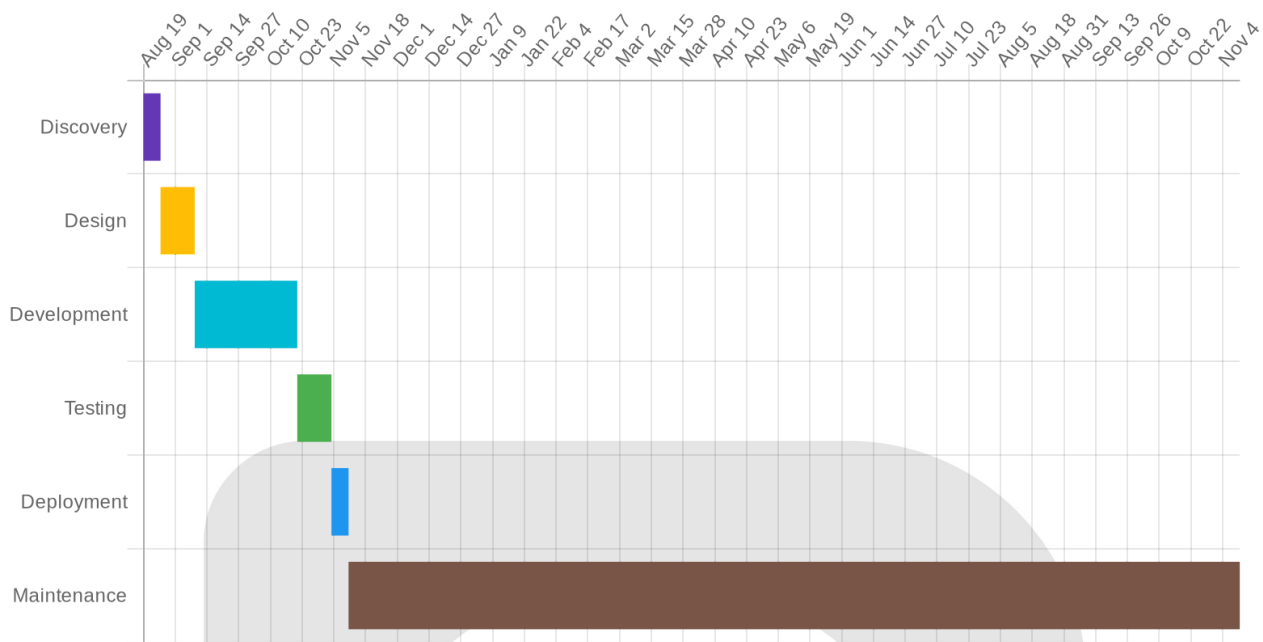
1. **Discovery:** This initial phase focuses on gathering detailed requirements, understanding ACME-1's business needs, and defining the project scope.
2. **Design:** In this phase, we will create the user interface (UI) and user experience (UX) design for the e-commerce platform, including wireframes and mockups.
3. **Development:** This is where the actual coding and implementation of the e-commerce platform will take place, based on the approved designs and specifications.
4. **Testing:** Rigorous testing will be conducted to identify and fix any bugs or issues, ensuring the platform functions correctly and meets quality standards.
5. **Deployment:** Once testing is complete, the e-commerce platform will be deployed to a production environment, making it accessible to customers.
6. **Maintenance:** Ongoing maintenance and support will be provided to ensure the platform remains stable, secure, and up-to-date.

Project Schedule

The estimated timeline for the project is as follows:

Phase	Start Date	End Date	Duration
Discovery	2025-08-19	2025-08-26	1 week
Design	2025-08-26	2025-09-09	2 weeks
Development	2025-09-09	2025-10-21	6 weeks
Testing	2025-10-21	2025-11-04	2 weeks
Deployment	2025-11-04	2025-11-11	1 week
Maintenance	2025-11-11	Ongoing	





Communication and Tracking

Docupal Demo, LLC will maintain open communication with ACME-1 throughout the project. We will use several methods to track progress and keep you informed:

- **Regular Status Meetings:** Scheduled meetings to discuss progress, address any issues, and make necessary adjustments.
- **Project Management Software (e.g., Jira):** A centralized platform for task management, bug tracking, and progress monitoring.
- **Weekly Progress Reports:** Detailed reports summarizing completed tasks, upcoming milestones, and any potential roadblocks.

Budget Estimation

This section outlines the estimated budget for the development of your Node.js e-commerce platform. The budget covers all aspects of the project, from initial design to deployment and ongoing support. We have included costs for development, design, infrastructure, third-party services, and project management. To ensure project success, a contingency fund is also included.



Cost Breakdown

The total estimated budget for the project is detailed below:

Item	Estimated Cost (USD)
Development	80,000
Design	20,000
Infrastructure	10,000
Third-Party Services	5,000
Project Management	15,000
Contingency (10%)	13,000
Total Estimated Cost	143,000

Development Costs: This encompasses all coding, testing, and debugging efforts required to build the core functionality of the e-commerce platform.

Design Costs: This includes the cost of creating the user interface (UI) and user experience (UX) design, ensuring a visually appealing and user-friendly platform.

Infrastructure Costs: These are the expenses associated with hosting the platform, including server costs, database management, and network infrastructure.

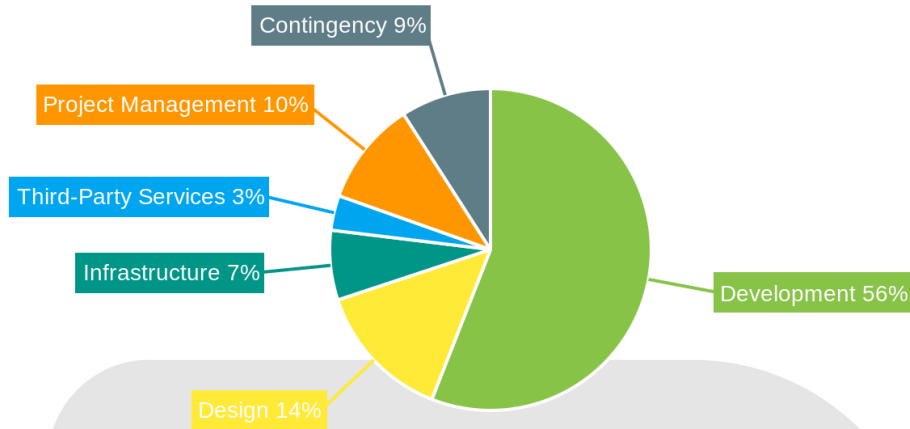
Third-Party Service Fees: This covers the cost of any external services integrated into the platform, such as payment gateways, shipping providers, and marketing tools.

Project Management Costs: This includes the cost of managing the project, including planning, communication, and coordination.

Contingency: A contingency of 10% of the total project cost has been included to cover unforeseen expenses and risks that may arise during the project.

Cost Distribution

The following chart illustrates the distribution of costs across different project aspects:



Team and Expertise

Docupal Demo, LLC brings together a skilled team to deliver a high-quality Node.js ecommerce solution for ACME-1. Our team's expertise covers project management, software development, and user experience design. We are dedicated to ensuring a smooth and innovative development process.

Our Team

- **John Doe, Project Manager:** John will oversee the entire project lifecycle, ensuring timely delivery and adherence to ACME-1's requirements. John has over 10 years of experience managing software projects. His focus is on clear communication and risk mitigation.
- **Jane Smith, Lead Developer:** Jane will lead the development team, guiding the technical implementation of the ecommerce platform. Jane has extensive experience with Node.js, Javascript, and related technologies. She will ensure code quality and maintainability.
- **Peter Jones, UX/UI Designer:** Peter will be responsible for creating an intuitive and engaging user experience for ACME-1's customers. Peter has a strong background in ecommerce design. He will focus on usability and conversion

optimization.

Quality and Innovation

Our team ensures quality and innovation through industry best practices. These practices include:

- **Code Reviews:** Rigorous code reviews will be conducted to identify and address potential issues early.
- **Automated Testing:** Automated tests will be implemented to ensure the reliability and stability of the platform.
- **Continuous Integration:** Continuous integration practices allow for frequent integration and testing of code changes.
- **Staying Current:** We are committed to staying up-to-date with the latest industry trends and technologies. This ensures that ACME-1 benefits from the most innovative solutions.

Security and Compliance

Docupal Demo, LLC prioritizes the security and compliance of your ecommerce platform. We understand the importance of protecting user data and maintaining customer trust.

Data Protection

We will implement several security protocols to safeguard sensitive information. These include:

- **SSL Encryption:** All data transmitted between the user's browser and our servers will be encrypted using SSL.
- **Data Anonymization:** Where possible, we will anonymize data to reduce the risk of re-identification.
- **Secure Password Storage:** User passwords will be securely stored using hashing algorithms.
- **Regular Security Audits:** We will conduct routine security audits to identify and address potential vulnerabilities.



Regulatory Compliance

Our development practices will adhere to relevant industry standards and regulations. This includes:

- **PCI DSS Compliance:** For payment processing, we will ensure full compliance with the Payment Card Industry Data Security Standard (PCI DSS).
- **GDPR Compliance:** We will comply with the General Data Protection Regulation (GDPR) for handling user data of EU citizens.
- **CCPA Compliance:** We will comply with the California Consumer Privacy Act (CCPA) for handling user data of California residents.

Risk Mitigation

We will implement proactive risk mitigation strategies to minimize potential security threats. These strategies include:

- **Risk Assessment:** Conducting comprehensive risk assessments to identify potential vulnerabilities and threats.
- **Backup and Recovery Plan:** Maintaining a robust backup and recovery plan to ensure business continuity in the event of data loss or system failure.
- **Security Incident Response Plan:** Establishing a detailed security incident response plan to effectively address and resolve any security breaches.

Maintenance and Support

We provide comprehensive post-launch maintenance, monitoring, and support services for your new Node.js e-commerce platform. Our goal is to ensure your platform operates smoothly, securely, and efficiently. We offer several support packages tailored to meet your specific needs.

Support Packages

We offer three support packages: Basic, Standard, and Premium. Each package provides a different level of service to accommodate varying business requirements. Details on each package's features and pricing can be provided upon request.



Updates and Bug Fixes

Regular updates and bug fixes are a key component of our maintenance agreement. We proactively monitor your platform for potential issues and address them promptly. This includes security patches, software updates, and bug resolutions. We will keep your platform up-to-date with the latest technologies and security standards.

Service Level Agreement (SLA)

Our commitment to you is formalized in a Service Level Agreement (SLA). This document outlines our guaranteed response times and resolution times for different types of issues. The SLA ensures that you receive timely and effective support when you need it most. We understand the critical nature of e-commerce operations and are dedicated to minimizing any potential downtime.

Our support team is available to assist with any questions or issues that may arise. We are committed to providing exceptional service and ensuring your e-commerce platform's continued success.

Conclusion and Next Steps

This proposal outlines how Docupal Demo, LLC can help ACME-1 achieve increased online sales, improved customer satisfaction, and an enhanced brand reputation. Our Node.js e-commerce solution is designed to streamline your operations and provide a scalable platform ready for future growth.

Next Steps

To move forward with this project, we recommend the following actions:

1. **Proposal Review and Approval:** Please carefully review the details of this proposal, including the scope of work, timeline, and investment.
2. **Contract Signature:** Upon your approval, sign the attached contract to formally initiate the project.
3. **Project Kickoff Meeting:** Following the contract signature, we will schedule a kickoff meeting to introduce the project team, finalize project details, and establish clear communication channels.



Getting in Touch

If you have any questions or require further clarification, please do not hesitate to contact John Doe at john.doe@docupaldemo.com or call 555-123-4567. We are eager to partner with ACME-1 on this project and look forward to a successful collaboration.

