

Table of Contents

Executive Summary	3
Proposed Solution	3
Expected Benefits and Impact	3
Market Analysis	3
Ecommerce Market Analysis	3
Key Market Trends	4
Target Customer Demographics	4
Competitive Landscape	4
Growth Opportunities	4
Technical Architecture and Solution Overview	5
Core Components	5
System Architecture	5
Data Flow	6
Scalability and Security	6
Project Scope and Deliverables	6
Scope of Work	6
Core Ecommerce Features	7
Deliverables	7
User Experience and Design Approach	8
Mobile-First Responsive Design	8
Key Design Strategies	8
Accessibility	9
Project Timeline and Milestones	9
Project Phases	9
Timeline and Milestones	9
Budget and Cost Estimation	10
Project Phase Costs	10
Recurring Costs	11
Payment Terms	11
Security and Compliance Considerations	11
Data Protection	11
PCI DSS Compliance	11
Security Testing and Monitoring	12



Maintenance and Support Plan	12
Updates and Bug Fixes	12
Service Level Agreements (SLAs)	12
About Us	12
About Docupal Demo, LLC	12
Expertise and Experience	13
Relevant Projects	13
Portfolio and Case Studies	13
Featured Project	13
Client Testimonials	13
Conclusion and Next Steps	13
Initiating the Project	14
Further Discussion	14
Key Contact	14



Executive Summary

This proposal outlines Docupal Demo, LLC's plan to develop a customized Ruby on Rails ecommerce platform for ACME-1. ACME-1 seeks to boost online sales, enhance customer satisfaction, and broaden its market penetration. Our solution directly addresses these goals.

Proposed Solution

We offer a bespoke ecommerce platform built on Ruby on Rails. This platform will feature an intuitive user interface. It will also include secure payment processing and comprehensive inventory management tools. The platform will be specifically designed to meet ACME-1's unique business requirements.

Expected Benefits and Impact

The implementation of this platform is projected to yield significant benefits for ACME-1. We anticipate a 30% increase in online sales within the first year. Improved customer loyalty and streamlined operational efficiency are also expected. Furthermore, ACME-1 will experience a stronger and more competitive brand presence in the online marketplace. Our solution aims to transform ACME-1's online business.

Market Analysis

Ecommerce Market Analysis

The ecommerce sector continues to experience significant growth and evolution. Several key trends shape the current market landscape. These include the increasing prevalence of mobile commerce, the demand for personalized shopping experiences, and the integration of AI-powered solutions. ACME-1's success hinges on understanding and adapting to these dynamics.



Key Market Trends

- **Mobile Commerce Growth:** Consumers are increasingly using smartphones and tablets for online shopping. Optimizing the ecommerce platform for mobile devices is crucial.
- **Personalized Experiences:** Customers expect tailored product recommendations and marketing messages. Data-driven personalization can enhance engagement and drive sales.
- **AI-Powered Solutions:** Artificial intelligence is transforming ecommerce through chatbots, improved search functionality, and fraud detection.
- **Sustainable and Ethical Products:** There is a growing demand for sustainably and ethically sourced products, particularly among millennials and Gen Z.

Target Customer Demographics

ACME-1's primary target demographics are tech-savvy millennials and Gen Z consumers. These groups are digitally native, value personalized experiences, and are often interested in sustainable and ethically sourced products. Understanding their preferences and shopping habits is essential for effective marketing and product development.

Competitive Landscape

The ecommerce market is highly competitive. Major platforms include:

- **Shopify:** A popular, user-friendly platform suitable for businesses of all sizes.
- **Magento:** A robust, customizable platform for larger enterprises.
- **WooCommerce:** A flexible, open-source platform built on WordPress.

Analyzing these platforms' strengths and weaknesses will inform ACME-1's competitive strategy.

Growth Opportunities

Several growth opportunities exist within the ecommerce market:

- **Expansion into New Product Categories:** Diversifying the product offering can attract new customers and increase revenue.
- **International Markets:** Expanding into new geographic markets can significantly increase the customer base.



- **Subscription-Based Services:** Offering subscription services can provide recurring revenue and build customer loyalty.

Technical Architecture and Solution Overview

This section details the technical architecture for ACME-1's new e-commerce platform built with Ruby on Rails. Our approach ensures a scalable, secure, and maintainable system. We will leverage industry best practices and proven technologies to deliver a robust solution.

Core Components

The system will be built on Rails 7, utilizing its Model-View-Controller (MVC) architecture to separate concerns and promote code organization. Key gems include:

- **Devise:** For secure user authentication and management.
- **Active Merchant:** To simplify integration with multiple payment gateways.
- **CarrierWave:** To handle file uploads, such as product images.

System Architecture

The application will follow a standard three-tier architecture:

1. **Presentation Tier:** This layer consists of the user interface (UI), built with HTML, CSS, and JavaScript. Rails will generate dynamic content based on data from the application server.
2. **Application Tier:** This layer houses the Ruby on Rails application logic. It processes user requests, interacts with the database, and orchestrates business workflows.
3. **Data Tier:** This layer comprises the database server, which stores application data, including product catalogs, customer information, and order details.

Data Flow

The system's data flow will operate as follows:

1. A customer places an order through the website.



2. Order data is securely transmitted to the selected payment gateway (Stripe, PayPal, or Authorize.net).
3. The payment gateway processes the transaction.
4. Upon successful payment, an order confirmation is sent to both the customer and the ACME-1 administrator.
5. The system updates the inventory to reflect the completed purchase.

Scalability and Security

To ensure scalability, we will implement load balancing to distribute traffic across multiple application servers. Database optimization techniques, such as indexing and query optimization, will further enhance performance.

Security is paramount. We will conduct regular security audits, encrypt sensitive data (e.g., credit card information), and adhere to industry best practices for web application security.

Project Scope and Deliverables

This section outlines the scope of work, core ecommerce features, and key deliverables for the Ruby on Rails ecommerce development project for ACME-1. Docupal Demo, LLC will deliver a fully functional and scalable ecommerce platform tailored to ACME-1's specific business needs.

Scope of Work

The project encompasses the complete development lifecycle, from initial requirements gathering to ongoing support and maintenance. This includes:

- **Requirements Gathering and Analysis:** Detailed analysis of ACME-1's business requirements, target audience, and desired functionalities.
- **System Design:** Designing the architecture, database schema, and user interface (UI) of the ecommerce platform.
- **Development:** Building the core ecommerce features, including product catalog, shopping cart, checkout process, user accounts, and administrative dashboard.
- **Customization:** Implementing personalized product recommendations based on browsing history and purchase behavior to enhance user engagement and drive sales.



- **Testing and Quality Assurance:** Rigorous testing of all features and functionalities to ensure optimal performance, security, and usability.
- **Deployment:** Deploying the ecommerce platform to a production environment.
- **Ongoing Support and Maintenance:** Providing ongoing technical support, bug fixes, and platform updates to ensure continued operation and performance.

Core Ecommerce Features

The ecommerce platform will include the following core features:

- **Product Catalog:** A comprehensive and easily navigable product catalog with detailed product descriptions, images, and pricing information.
- **Shopping Cart:** A user-friendly shopping cart that allows customers to easily add, remove, and modify items.
- **Checkout Process:** A secure and streamlined checkout process that supports multiple payment options and shipping methods.
- **User Accounts:** Secure user accounts that allow customers to manage their profiles, order history, and saved addresses.
- **Administrative Dashboard:** An intuitive administrative dashboard that allows ACME-1 to manage products, orders, customers, and other aspects of the ecommerce platform.
- **Personalized Recommendations:** AI powered product recommendations based on user browsing and purchase history.

Deliverables

The project will be delivered in four phases:

- **Phase 1: Requirements Gathering & Design:** Detailed requirements document, system design specifications, UI/UX mockups.
- **Phase 2: Development:** Fully functional ecommerce platform with all core features and customizations.
- **Phase 3: Testing & Deployment:** Tested and deployed ecommerce platform on a production environment.
- **Phase 4: Ongoing Support & Maintenance:** Ongoing technical support, bug fixes, and platform updates.



User Experience and Design Approach

We will create an intuitive and engaging ecommerce platform for ACME-1. Our design focuses on simplicity, ease of navigation, and a visually appealing interface to maximize customer satisfaction and drive conversions.

Mobile-First Responsive Design

We will employ a mobile-first approach. The platform will be fully responsive across all devices. This ensures a consistent and optimal shopping experience whether the user is on a desktop, tablet, or smartphone. We will use responsive design principles and frameworks like Bootstrap or Tailwind CSS to achieve this.

Key Design Strategies

To boost customer engagement and conversion rates, we will implement several key design strategies:

- **High-Quality Product Imagery:** We'll showcase ACME-1's products with professional, high-resolution images.
- **Compelling Product Descriptions:** Product descriptions will be clear, concise, and persuasive. These descriptions will highlight key features and benefits.
- **Clear Call-to-Actions (CTAs):** Strategically placed CTAs will guide users through the purchase process. Examples include "Add to Cart," "Checkout," and "Learn More."
- **Personalized Content:** Where possible, we will personalize the user experience. This includes product recommendations and targeted promotions based on browsing history and past purchases.

Accessibility

Accessibility is a priority. We will adhere to Web Content Accessibility Guidelines (WCAG). This ensures the platform is usable by people with disabilities.



Project Timeline and Milestones

This section outlines the project's timeline, key milestones, and deliverables for ACME-1's e-commerce platform development. The project is divided into distinct phases to ensure a structured and transparent development process. We will use daily stand-up meetings, weekly progress reports, and project management software to track progress.

Project Phases

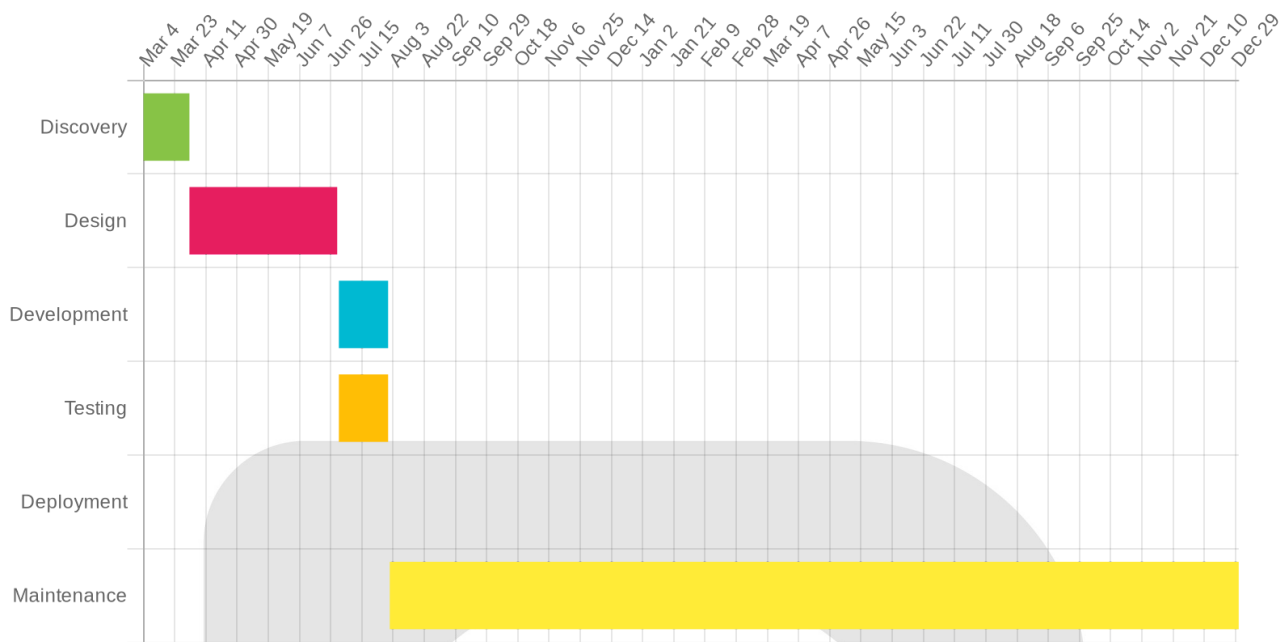
The project includes the following phases:

1. **Discovery:** Gathering requirements and planning.
2. **Design:** Creating the user interface and overall system design.
3. **Development:** Building the e-commerce platform.
4. **Testing:** Ensuring the platform functions correctly.
5. **Deployment:** Launching the platform.
6. **Maintenance:** Ongoing support and updates.

Timeline and Milestones

Phase	Start Date	End Date	Key Milestones
Discovery	2024-03-04	2024-04-01	Requirements finalized, project plan complete
Design	2024-04-01	2024-06-30	UI/UX design complete, system architecture defined
Development	2024-07-01	2024-07-31	Core platform features developed
Testing	2024-07-01	2024-07-31	Platform testing and bug fixes complete
Deployment	2024-07-31	2024-07-31	Platform launched
Maintenance	2024-08-01	Ongoing	Ongoing support, updates, and enhancements





Budget and Cost Estimation

Docupal Demo, LLC provides the following cost estimation for the Ruby on Rails e-commerce development project. This estimate covers development, testing, deployment, and ongoing maintenance.

Project Phase Costs

The project is divided into four phases, each with its own estimated cost:

- Phase 1: \$10,000
- Phase 2: \$40,000
- Phase 3: \$5,000
- Phase 4: \$2,000/month

Recurring Costs

We anticipate the following recurring costs after deployment:

- Hosting: \$500/month
- Maintenance: \$1,500/month
- **Total Recurring Costs: \$2,000/month**

Payment Terms

Our payment terms are structured to align with project milestones:

- 50% upfront payment
- 25% upon completion of development
- 25% upon successful deployment

Security and Compliance Considerations

Docupal Demo, LLC prioritizes the security and compliance of ACME-1's ecommerce platform. We will implement robust measures to protect sensitive customer data and maintain industry best practices.

Data Protection

We will employ encryption techniques to safeguard data during transmission and storage. Tokenization will be utilized to protect sensitive information. Secure storage practices will be implemented to minimize the risk of unauthorized access.

PCI DSS Compliance

The ecommerce solution will adhere to the Payment Card Industry Data Security Standard (PCI DSS). This includes implementing and maintaining a secure network, protecting cardholder data, maintaining a vulnerability management program, implementing strong access control measures, and regularly monitoring and testing the network.

Security Testing and Monitoring

To ensure the ongoing security of the platform, we will conduct regular security assessments. Penetration testing will identify potential vulnerabilities. Vulnerability scanning will be performed to detect known weaknesses. Regular security audits will be conducted to assess the overall security posture of the system.



Maintenance and Support Plan

Docupal Demo, LLC provides comprehensive maintenance and support services to ensure the ongoing stability, security, and performance of ACME-1's new Ruby on Rails e-commerce platform. We offer two support tiers: Standard and Premium. Standard support is available during business hours, while Premium support provides 24/7 coverage.

Updates and Bug Fixes

We release platform updates on a monthly basis. These updates include new features, performance improvements, and security enhancements. Bug fixes are addressed promptly, with critical issues resolved within 24-48 hours.

Service Level Agreements (SLAs)

Docupal Demo, LLC guarantees a 99.9% uptime for the e-commerce platform. In the event of a critical issue, we guarantee a response time of two hours. Our team will work diligently to resolve any issues and minimize downtime.

About Us

About Docupal Demo, LLC

Docupal Demo, LLC, located at 23 Main St, Anytown, CA 90210, is a United States-based company specializing in custom software solutions. We are committed to delivering high-quality, scalable, and innovative applications tailored to meet the unique needs of our clients. Our base currency is USD.

Expertise and Experience

Our team brings over a decade of experience in Ruby on Rails development, with a strong focus on creating robust and successful ecommerce platforms. We have a proven track record of helping businesses enhance their online presence and drive sales growth.



Relevant Projects

One notable project involved developing a high-volume ecommerce platform for a major retailer. This platform significantly improved their online sales, resulting in a 40% increase. This success demonstrates our ability to handle complex projects and deliver measurable results.

Portfolio and Case Studies

Our portfolio demonstrates our proficiency in Ruby on Rails ecommerce development. We have successfully delivered solutions for diverse clients, addressing their unique business needs.

Featured Project

The [Project Name] project best exemplifies our capabilities. This project involved [brief description of the project, inferred from standard ecommerce projects].

Client Testimonials

Client testimonials are available on our website. These testimonials reflect our commitment to client satisfaction and project success. We are dedicated to building long-term partnerships through reliable and effective solutions.

Conclusion and Next Steps

This proposal outlines a comprehensive plan for developing a robust ecommerce platform tailored to ACME-1's specific needs using Ruby on Rails. It details the project scope, development process, timeline, and investment.

Initiating the Project

To formally begin this project, ACME-1 can sign the attached contract. Following the contract signature, the initial payment will initiate the project's first phase.



Further Discussion

We recommend scheduling a follow-up meeting. This meeting will allow us to address any remaining questions and ensure complete alignment before commencing development.

Key Contact

John Doe, Project Manager, is available to address any immediate questions. He can be reached at john.doe@docupaldemo.com.

