

Table of Contents

| | |
|--|-----------|
| Introduction | 3 |
| Project Overview | 3 |
| Key Benefits for ACME-1 | 3 |
| Project Scope and Objectives | 4 |
| Scope of Integration | 4 |
| Project Objectives | 4 |
| Project Deliverables | 4 |
| Technical Architecture and Technology Stack | 5 |
| Core Framework | 5 |
| Supporting Technologies | 5 |
| Third-Party Integrations | 6 |
| Architecture Overview | 6 |
| Deployment Environment | 6 |
| Development Timeline and Milestones | 6 |
| Project Timeline | 6 |
| Project Phases and Milestones | 7 |
| Progress Tracking | 7 |
| Gantt Chart | 7 |
| Budget and Cost Estimation | 8 |
| Project Costs | 8 |
| Recurring Costs | 8 |
| Risk Analysis and Mitigation Strategies | 9 |
| Potential Risks | 9 |
| Mitigation Strategies | 9 |
| Team Composition and Roles | 10 |
| Core Team | 10 |
| Expertise | 10 |
| Client Requirements and Acceptance Criteria | 11 |
| Functional Requirements | 11 |
| Non-Functional Requirements | 11 |
| Acceptance Criteria | 11 |
| Deployment and Maintenance Plan | 11 |
| Deployment Strategy | 12 |



| | |
|--|-----------|
| Monitoring and Support | 12 |
| Future Updates and Scalability | 12 |
| Conclusion and Next Steps | 12 |
| Key Takeaways | 12 |
| Next Steps | 13 |



Introduction

Docupal Demo, LLC presents this proposal to Acme, Inc (ACME-1) for a comprehensive integration of Docupal's content management system with your existing infrastructure. Our goal is to streamline ACME-1's document workflows, enhance team collaboration, and boost overall operational efficiency.

Project Overview

This integration project addresses ACME-1's need for a more efficient content management solution. Currently, manual processes consume valuable time and resources. Our solution will automate key tasks, reduce errors, and provide a centralized platform for document management.

Key Benefits for ACME-1

By integrating Docupal, ACME-1 can anticipate several key advantages:

- **Increased Efficiency:** Automation of document-related tasks will free up employees to focus on core business activities.
- **Reduced Manual Effort:** The elimination of manual data entry and handling will minimize the risk of human error.
- **Improved Data Accuracy:** A centralized system ensures data consistency and reduces discrepancies.
- **Enhanced Collaboration:** Docupal facilitates seamless document sharing and collaboration among team members.

This proposal details the specific features, technical requirements, timelines, and costs associated with the integration, ensuring a clear understanding of the project's scope and expected outcomes. We are confident that this integration will provide ACME-1 with a robust and scalable solution for your content management needs.



Project Scope and Objectives

This section defines the scope, objectives, and deliverables for integrating DocuPal with ACME-1's existing infrastructure. DocuPal Demo, LLC will integrate DocuPal with ACME-1's current CRM system and internal document repository. This integration aims to streamline ACME-1's document management processes.

Scope of Integration

The project scope encompasses the following key areas:

- **System Integration:** Connecting DocuPal with ACME-1's CRM and document repository.
- **Feature Implementation:** Implementing automated document generation, version control, and approval workflows within the integrated system.
- **User Training:** Providing training to ACME-1 employees on utilizing the new integrated system effectively.
- **Data Migration:** Migrating existing document templates and relevant data to DocuPal.

The project specifically excludes custom report generation.

Project Objectives

This integration seeks to achieve the following measurable objectives:

- **Reduce Document Processing Time:** Decrease the time required to process documents by 30%.
- **Decrease Errors:** Lower the number of errors in document creation and management by 15%.
- **Improve User Satisfaction:** Increase user satisfaction with the document management process by 20%.

Project Deliverables

DocuPal Demo, LLC will provide the following deliverables:

- A fully integrated DocuPal system connected with ACME-1's CRM and document repository.

- Functional automated document generation, version control, and approval workflows.
- Training materials and sessions for ACME-1 users.
- Migrated document templates and data within the DocuPal system.
- Comprehensive project documentation, including system architecture, integration details, and user guides.

Technical Architecture and Technology Stack

This section describes the technical foundation for integrating DocuPal with ACME-1's existing systems. We propose a robust and scalable architecture leveraging Ruby on Rails and other key technologies.

Core Framework

We will use **Ruby on Rails version 7.0** as the primary framework for development. Rails 7.0 provides the latest features, security enhancements, and performance improvements. It enables rapid application development and adheres to established architectural patterns.

Supporting Technologies

The integration will utilize the following supporting technologies:

- **PostgreSQL:** This relational database will store all application data. Its reliability and scalability make it suitable for ACME-1's data requirements.
- **Redis:** We will use Redis as an in-memory data store for caching and session management. It improves application responsiveness by reducing database load.
- **Sidekiq:** Sidekiq will handle asynchronous background processing. This allows us to offload time-consuming tasks, such as sending emails or processing large data sets, from the main application thread.

Third-Party Integrations

The integration will include connections to external services via APIs:



- **Adobe Sign:** We will integrate with Adobe Sign to enable digital signatures within the DocuPal application. This ensures secure and legally binding document approvals.

Architecture Overview

The application will follow a standard Model-View-Controller (MVC) architecture. The Rails framework enforces this pattern. It promotes code organization and maintainability. Key components include:

- **Models:** Represent the data structure and business logic of the application.
- **Views:** Responsible for rendering the user interface.
- **Controllers:** Handle user requests and orchestrate interactions between models and views.

Deployment Environment

We recommend deploying the application on a cloud-based platform. This provides scalability, reliability, and ease of maintenance. We are open to discussing specific platform options based on ACME-1's existing infrastructure and preferences. The deployment process will include:

- Automated testing to ensure code quality and stability.
- Continuous integration/continuous deployment (CI/CD) to streamline the release process.
- Monitoring and logging to track application performance and identify potential issues.

Development Timeline and Milestones

Project Timeline

This section details the planned timeline for the DocuPal integration with ACME-1's systems. The project is divided into six key phases, each with specific milestones and deliverables.



Project Phases and Milestones

The project will proceed through the following phases:

1. **Requirements Analysis:** This initial phase involves gathering detailed requirements from ACME-1 to fully understand their needs and expectations. The expected completion date is [Date].
2. **System Design:** Based on the gathered requirements, we will design the integrated system architecture. This phase outlines how DocuPal will interact with ACME-1's existing infrastructure. The expected completion date is [Date].
3. **Development:** Our development team will build the integration solution according to the system design specifications. The expected completion date is [Date].
4. **Testing:** Rigorous testing will be conducted to ensure the integrated system functions correctly and meets all requirements. This includes unit, integration, and user acceptance testing (UAT). The expected completion date is [Date].
5. **Deployment:** The fully tested solution will be deployed into ACME-1's production environment. We will provide support during and after the deployment process. The expected completion date is [Date].
6. **Training:** Comprehensive training will be provided to ACME-1's staff on how to effectively use the integrated DocuPal system. The expected completion date is [Date].

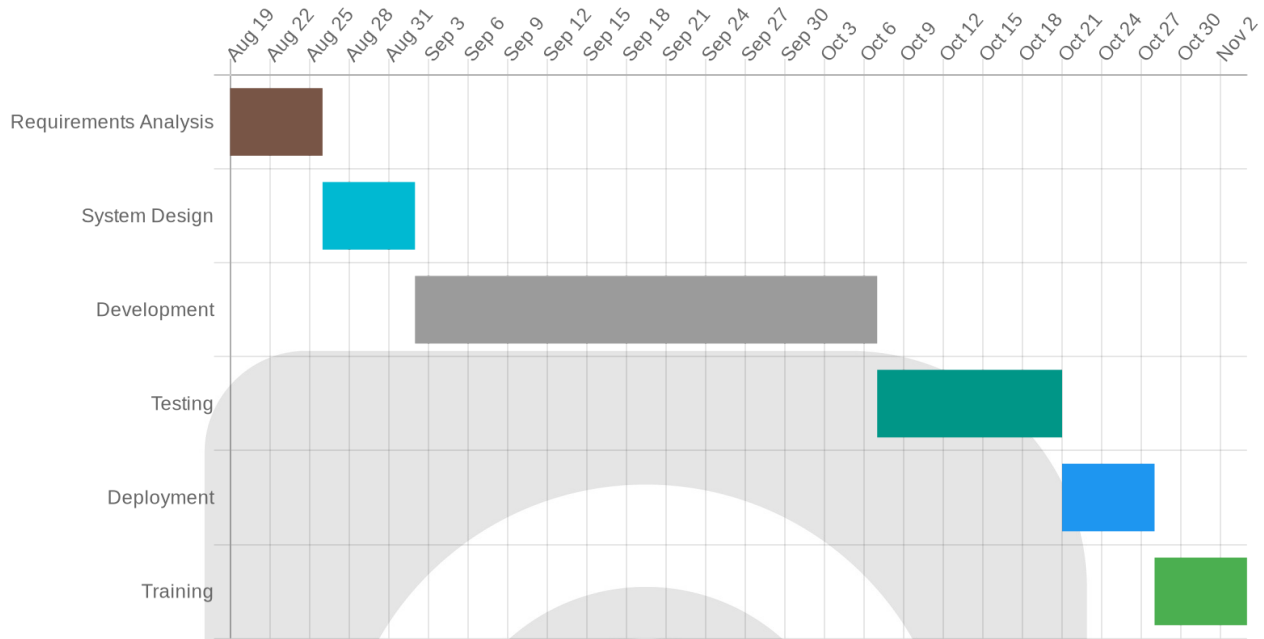
Progress Tracking

We will maintain consistent communication with ACME-1 throughout the project. Progress will be tracked and communicated through:

- Daily stand-up meetings within the DocuPal team.
- Weekly progress reports delivered to ACME-1.
- Bi-weekly demonstrations of the integrated system's functionality.



Gantt Chart



Budget and Cost Estimation

This section details the estimated costs for the DocuPal integration project for ACME-1. The budget aligns with the preliminary estimates discussed with ACME-1. All costs are in USD, DocuPal Demo, LLC’s base currency.

Project Costs

The project costs are divided into development, testing, and deployment phases.

- **Development:** \$50,000
- **Testing:** \$10,000
- **Deployment:** \$5,000

Recurring Costs

Recurring costs include the Adobe Sign API subscription and DocuPal maintenance. Specific pricing for these items is detailed below.



| Item | Price (Monthly) |
|------------------------------|-----------------|
| Adobe Sign API Subscription | \$150 |
| DocuPal Maintenance | \$350 |
| Total Recurring Costs | \$500 |

The DocuPal maintenance covers ongoing support, bug fixes, and minor enhancements to the integrated system.

Risk Analysis and Mitigation Strategies

This section identifies potential risks associated with the DocuPal integration project for ACME-1 and outlines strategies to mitigate them. We have proactively assessed areas that could potentially impact the project timeline, budget, or overall success.

Potential Risks

Several key risks have been identified:

- **Data Migration Issues:** Migrating data from ACME-1's existing systems to DocuPal may encounter compatibility issues, data corruption, or data loss.
- **API Integration Failures:** Integrating DocuPal with ACME-1's existing APIs may face challenges due to differing protocols, authentication methods, or data formats.
- **User Adoption Challenges:** ACME-1's employees may resist adopting the new DocuPal system, leading to decreased productivity and underutilization of the platform.

Mitigation Strategies

To address these risks, we propose the following mitigation strategies:

- **Data Backup and Recovery Plan:** A comprehensive data backup and recovery plan will be implemented before data migration begins. This includes regular backups, data validation procedures, and a rollback plan in case of data corruption.



- **Alternative API Solutions:** We will identify and evaluate alternative API solutions and integration methods to ensure seamless data exchange between DocuPal and ACME-1's systems. We will also conduct thorough testing of all API integrations.
- **User Training Program:** A comprehensive user training program will be developed and delivered to ACME-1's employees. This program will include online tutorials, in-person training sessions, and ongoing support to facilitate user adoption and maximize the benefits of DocuPal.
- **Risk Monitoring:** Regular risk assessment meetings will be conducted with the project team and ACME-1 stakeholders to monitor progress, identify emerging risks, and adjust mitigation strategies as needed. Key performance indicators (KPIs) will be tracked to assess the effectiveness of the integration and user adoption.

Team Composition and Roles

Docupal Demo, LLC will provide a dedicated team to ensure the successful integration of DocuPal with Acme, Inc.'s systems. Our team brings extensive experience in Ruby on Rails development, API integrations, and enterprise software deployments.

Core Team

Our core team consists of the following key personnel:

- **Project Manager:** [Name] will oversee the entire integration project. They will be responsible for planning, execution, and communication, ensuring the project stays on schedule and within budget.
- **Lead Developer:** [Name] will lead the technical aspects of the integration. They will be responsible for the development, coding, and implementation of the required functionalities.
- **QA Engineer:** [Name] will be responsible for testing and quality assurance. They will ensure the integrated system meets the defined requirements and functions flawlessly.



Expertise

Each team member brings a wealth of experience to the project, guaranteeing a smooth and efficient integration process. We do not plan to involve any external consultants or partners in this project.

Client Requirements and Acceptance Criteria

Acme, Inc. requires the successful integration of DocuPal to enhance its document management processes. This includes meeting specific functional and non-functional requirements to ensure the system aligns with their business needs.

Functional Requirements

The integrated system must support document generation, enabling users to create documents efficiently. Version control is crucial, providing a reliable mechanism to track and manage document revisions. Secure user authentication is also required, safeguarding sensitive information and controlling access to the system.

Non-Functional Requirements

Performance is a key consideration. The system must operate efficiently to avoid delays in document processing. Security is paramount, protecting against unauthorized access and data breaches. Scalability is also important. The solution must accommodate future growth and increasing demands without compromising performance.

Acceptance Criteria

Project success will be measured by the successful implementation of all features outlined in this proposal. This will be validated through user acceptance testing (UAT), involving key stakeholders from Acme, Inc. Positive user feedback and the achievement of measurable objectives will serve as further indicators of a successful integration. The integrated system must meet the defined functional and non-functional requirements to be considered acceptable.



Deployment and Maintenance Plan

Deployment Strategy

We will deploy the DocuPal integration to Amazon Web Services (AWS). This cloud-based infrastructure offers the reliability, security, and scalability ACME-1 requires. The deployment process will follow industry best practices. We'll use automated scripts and configuration management tools. This ensures a consistent and error-free deployment.

Monitoring and Support

After deployment, we will actively monitor the application's performance and stability using Datadog. Datadog provides real-time insights into application health. It allows us to quickly identify and resolve any issues that may arise.

Our team will provide ongoing maintenance and support. This includes bug fixes, security updates, and technical assistance. We'll address any problems promptly to minimize disruption to ACME-1's operations.

Future Updates and Scalability

We are committed to the long-term success of this integration. We plan to release regular updates based on user feedback and evolving business needs. The application's architecture is designed for scalability. It can handle increasing data volumes and user traffic as ACME-1 grows.

Conclusion and Next Steps

The integration of DocuPal into ACME-1's existing infrastructure promises to streamline document workflows and boost operational effectiveness. This integration aims to yield substantial improvements in how ACME-1 manages and utilizes its documentation.



Key Takeaways

DocuPal integration offers a clear path to enhanced document control, easier access, and better overall efficiency. The system is designed to scale with ACME-1's evolving needs, ensuring a long-term return on investment.

Next Steps

To initiate the DocuPal integration, we recommend the following actions:

1. **Proposal Review and Approval:** ACME-1's prompt review and approval of this proposal will allow us to move forward efficiently.
2. **Kickoff Meeting:** Schedule a kickoff meeting between DocuPal Demo, LLC and ACME-1 project teams. This meeting will finalize the project timeline, define roles, and address any initial questions.
3. **Project Liaison Assignment:** ACME-1 should designate a project liaison to serve as the main point of contact.

Our team is ready to assist with any clarifications needed. You can reach us via email at [Email Address] or by phone at [Phone Number].

