

Table of Contents

Introduction and Project Overview	3
Project Objectives	3
Target Audience	3
Key Features and Benefits	3
Market and Competitive Analysis	4
Technical Architecture and Design	5
Core Components	5
Extensibility and Modularity	5
Dependencies	6
Integration	6
Version Milestones	6
Development Roadmap and Timeline	6
Project Roadmap	6
Phase 1: Project Setup and Core Functionality (4 weeks)	7
Phase 2: Advanced Features and Integrations (6 weeks)	7
Phase 3: Testing and Documentation (2 weeks)	7
Project Timeline	7
Testing and Quality Assurance	8
Testing Strategy	8
Continuous Integration and Automated Testing	8
Quality Benchmarks	9
Deployment and Distribution Strategy	9
Gem Packaging and Versioning	9
Publishing to RubyGems.org	9
Release Process and Update Management	10
Licensing, Maintenance, and Community Engagement	10
Licensing	10
Maintenance and Support	10
Community Engagement	10
About Us	11
Our Expertise	11
Relevant Experience	11
Conclusion and Call to Action	11





Introduction and Project Overview

This document presents a proposal from Docupal Demo, LLC to ACME-1 for the development of a Ruby on Rails gem. This gem will streamline document generation and management directly within Rails applications. Our goal is to provide ACME-1 with a tool that significantly reduces development time, improves document accuracy, and enhances team collaboration.

Project Objectives

The primary objective is to create a robust and user-friendly Rails gem that simplifies the complexities associated with document handling. We aim to automate data population, offer versatile document templating, and ensure secure storage of sensitive information. The developed gem will facilitate format conversion (PDF, DOCX) and implement version control, making document workflows more efficient and reliable.

Target Audience

This gem is designed for Rails developers seeking to integrate document generation capabilities into their applications. It also benefits project managers who need to oversee document workflows and content creators responsible for producing and managing document content. By catering to these diverse users, the gem promotes a unified and streamlined document management process across teams.

Key Features and Benefits

The gem will include the following key features:

- **Document Templating:** Define reusable templates for various document types.
- **Automated Data Population:** Automatically populate templates with data from Rails models.
- **Format Conversion:** Convert documents to different formats such as PDF and DOCX.
- **Version Control:** Track changes and revisions to documents.
- **Secure Storage:** Securely store and manage documents within the application.



These features translate into several key benefits:

- **Reduced Development Time:** Automate document creation, freeing up developer resources.
- **Improved Accuracy:** Minimize manual data entry errors.
- **Enhanced Collaboration:** Facilitate seamless document sharing and version control among team members.
- **Simplified Document Workflows:** Streamline the entire document lifecycle from creation to storage.

Market and Competitive Analysis

The market for document generation tools is experiencing substantial growth. This is driven by the increasing need for businesses to automate and streamline their document workflows. Digital documentation is now a core part of operations across various industries. Our gem aims to capitalize on this trend by offering a Ruby on Rails-centric solution.

Existing Solutions

Currently, several gems address specific aspects of document generation. Prawn, for instance, is a popular choice for generating PDFs. Docx provides functionality for working with Microsoft Word documents. However, these solutions often lack the comprehensive features needed for advanced document management. They don't always offer seamless integration with Rails applications, version control, or secure storage options.

Market Opportunities

A significant opportunity exists for a gem that provides a complete document generation and management solution within the Rails ecosystem. ACME-1 and other companies need tools that can handle the entire document lifecycle, from creation to storage and versioning. Our gem will fill this gap by offering a user-friendly, Rails-integrated solution with advanced features. This includes secure storage and robust version control.

Demand and Growth



The demand for document generation tools is projected to continue growing. Businesses are increasingly seeking ways to automate processes, reduce manual effort, and improve efficiency. A comprehensive Rails gem that simplifies document management will be highly valuable to developers and organizations.

Technical Architecture and Design

The gem will be built with a modular architecture. This design promotes both extensibility and maintainability. The gem supports Ruby versions 2.7 and above, and Rails versions 6.0 and later.

Core Components

The gem's core will handle document generation. It will provide a consistent API for creating various document types. This includes:

- **Document Definition DSL:** A Ruby-based DSL for defining document structures. This DSL will allow ACME-1 to specify elements like headings, paragraphs, tables, and images in a clear, concise manner.
- **Renderer Abstraction:** An abstraction layer for different document rendering engines. Initially, prawn for PDFs and docx for Microsoft Word documents will be supported. This allows for adding new formats in the future.
- **Template Engine Integration:** Seamless integration with Rails template engines like ERB and Haml. This enables dynamic document generation using data from ACME-1's application.

Extensibility and Modularity

The design emphasizes modularity. It allows ACME-1's developers to extend the gem's functionality. Key features include:

- **Custom Renderers:** ACME-1 can create custom renderers for supporting other document formats.
- **Middleware Integration:** Support for Rails middleware. This enables pre- and post-processing of documents during generation.
- **Plugin Architecture:** A plugin architecture for adding features. This includes watermarking, digital signatures, and custom styling.



Dependencies

The gem will rely on the following key dependencies:

- **prawn:** For generating PDF documents.
- **docx:** For creating Microsoft Word documents.
- **AWS S3 (Optional):** For storing generated documents in Amazon S3.

These dependencies will be managed using Bundler.

Integration

The gem is designed to integrate seamlessly into ACME-1's existing Rails application. The integration process will involve:

1. Adding the gem to ACME-1's Gemfile.
2. Running bundle install to install the gem and its dependencies.
3. Configuring the gem via a Rails initializer. This configuration will include settings for storage, default rendering engine, and other options.

Version Milestones

The planned version milestones are outlined below.

Development Roadmap and Timeline

Project Roadmap

Our gem development will proceed in three distinct phases. These phases ensure a structured approach from initial setup to final delivery. We will monitor progress closely using regular meetings, code reviews, and project management software.

Phase 1: Project Setup and Core Functionality (4 weeks)

This initial phase focuses on establishing the project foundation. It includes setting up the development environment. We will define the core functionalities of the gem. We aim to have the basic gem structure and essential features operational by the end of this phase.



Phase 2: Advanced Features and Integrations (6 weeks)

Building upon the core, this phase integrates advanced features. We will incorporate any necessary external integrations. This phase ensures the gem is robust and meets all specified requirements.

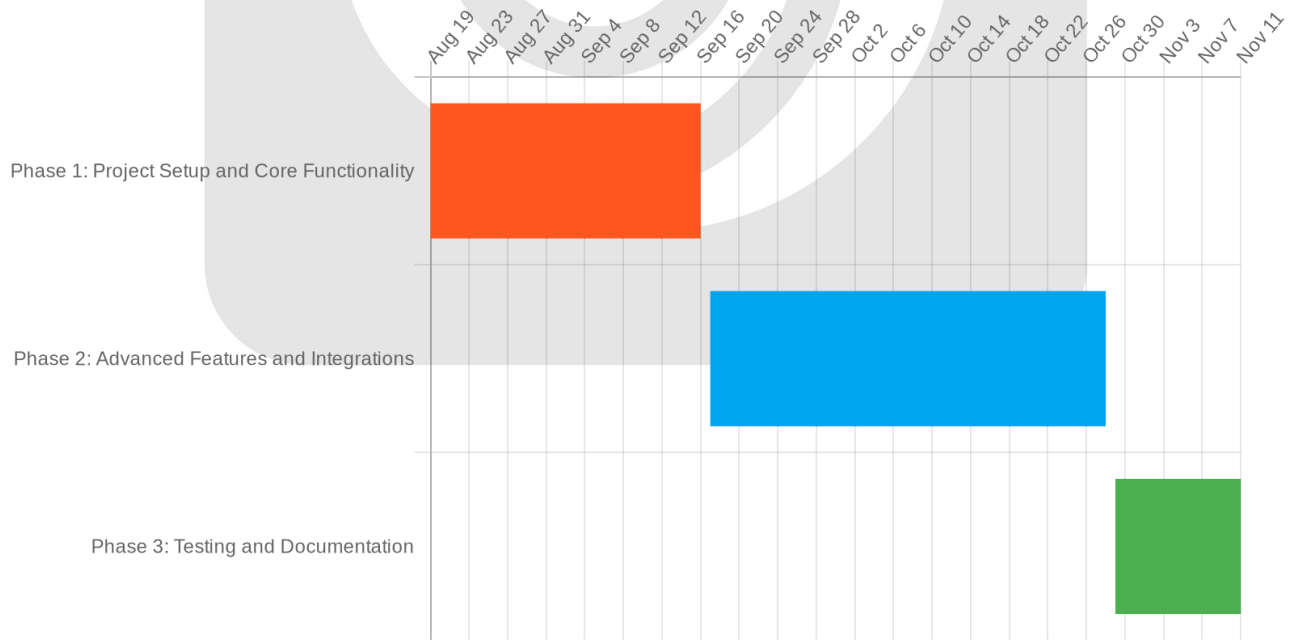
Phase 3: Testing and Documentation (2 weeks)

The final phase is dedicated to rigorous testing and comprehensive documentation. We will conduct thorough testing to identify and resolve any bugs. We will create detailed documentation to guide users on gem usage and implementation.

Project Timeline

The total project duration is estimated to be 12 weeks. The table below provides a detailed breakdown of the timeline for each phase.

Phase	Duration	Start Date	End Date
Phase 1: Project Setup and Core Functionality	4 weeks	2025-08-19	2025-09-16
Phase 2: Advanced Features and Integrations	6 weeks	2025-09-17	2025-10-28
Phase 3: Testing and Documentation	2 weeks	2025-10-29	2025-11-11



Testing and Quality Assurance

We will ensure the gem's reliability and stability through rigorous testing and quality assurance practices. Our approach covers various testing levels and incorporates continuous integration for early detection of issues.

Testing Strategy

Our testing strategy includes unit, integration, and functional tests. Unit tests will verify the behavior of individual components. Integration tests will ensure the interaction between different parts of the gem works correctly. Functional tests will validate the gem's features from the user's perspective. We will use RSpec as our primary testing framework. Capybara will support functional testing by simulating user interactions.

Continuous Integration and Automated Testing

We will implement continuous integration using GitHub Actions. This setup will automatically run tests on every commit and pull request. Automated testing provides rapid feedback and helps prevent regressions. It also ensures code changes do not introduce new issues.

Quality Benchmarks

We are targeting high quality and stability benchmarks for the gem. Our goal is to achieve 99.9% uptime. We will also maintain comprehensive test coverage. We will adhere to the established Ruby on Rails coding standards. These measures ensure a robust and maintainable gem.

Deployment and Distribution Strategy

The gem will be packaged using standard gem packaging tools, ensuring compatibility and ease of installation for Rails developers. We will adopt Semantic Versioning (SemVer) to clearly communicate the scope and impact of each release. This approach helps users understand whether an update includes breaking changes, new features, or just bug fixes.



Gem Packaging and Versioning

We will use the `gem build` command to create the gem package. The resulting `.gem` file will contain all necessary code, documentation, and metadata. Versioning will follow the SemVer convention: MAJOR.MINOR.PATCH.

- **MAJOR:** Indicates incompatible API changes.
- **MINOR:** Indicates new functionality added in a backward-compatible manner.
- **PATCH:** Indicates backward-compatible bug fixes.

Publishing to RubyGems.org

The gem will be published to RubyGems.org, the central repository for Ruby gems. This makes it easily accessible to the entire Ruby on Rails community. The publishing process involves:

1. Creating an account on RubyGems.org.
2. Obtaining an API key.
3. Using the `gem push` command to upload the `.gem` file.

Release Process and Update Management

Our release process will involve an initial release, followed by regular updates. These updates will be driven by user feedback, bug reports, and planned feature enhancements. We will provide comprehensive changelogs with each release, detailing changes, bug fixes, and new features. This will allow users to quickly assess the impact of each update and plan accordingly.

To manage backward compatibility, we will carefully consider the impact of any breaking changes. If such changes are necessary, we will provide clear migration guides to assist users in updating their applications. We will strive to minimize breaking changes and maintain backward compatibility whenever possible. The frequency of updates will depend on the volume of feedback and the complexity of new features. We anticipate releasing updates on a monthly or bi-monthly basis initially, adjusting the frequency as needed based on user adoption and feedback.

Licensing, Maintenance, and Community



Engagement

Licensing

The Ruby on Rails gem developed by Docupal Demo, LLC for ACME-1 will be released under the MIT License. This permissive license grants users the freedom to use, modify, and distribute the gem, even for commercial purposes. The MIT License ensures broad adoption and encourages community contributions.

Maintenance and Support

Docupal Demo, LLC will provide ongoing maintenance and support for the gem. This includes addressing bug fixes, security vulnerabilities, and compatibility issues. We will offer a standard maintenance plan for one year, included with the initial development cost. Extended maintenance agreements can be negotiated separately.

Community Engagement

We are committed to fostering a vibrant and collaborative community around the gem. We will actively manage user feedback and contributions through several channels:

- **Dedicated Support Channel:** ACME-1 users will have access to a dedicated support channel for direct assistance and issue reporting.
- **GitHub Issues:** A public GitHub repository will be established for bug tracking, feature requests, and community discussions.
- **Community Forums:** We will establish a community forum where users can share their experiences, ask questions, and collaborate on solutions.

About Us

Docupal Demo, LLC, is a United States-based company located in Anytown, CA, specializing in Ruby on Rails application development and gem creation. We are dedicated to providing innovative solutions that streamline development processes and improve application functionality.



Our Expertise

Our team possesses extensive experience in building robust and scalable Ruby on Rails applications. We have a proven track record of successfully delivering projects that meet and exceed client expectations. Our expertise extends to developing and maintaining Ruby gems, which are designed to enhance Rails applications.

Relevant Experience

We have a strong portfolio of successful Rails applications and significant contributions to open-source projects. This demonstrates our deep understanding of the Ruby on Rails ecosystem. Our team is skilled in creating gems that solve common development challenges. We focus on creating high-quality, well-documented, and easily maintainable code.

Conclusion and Call to Action

DocuPal Demo, LLC is prepared to deliver a Ruby on Rails gem that will significantly streamline document generation and management for ACME-1. Our solution saves your team time, improves document accuracy, and fosters better collaboration.

Next Steps

We encourage you to approve this proposal to initiate the project. Following approval, we propose scheduling a kickoff meeting. This meeting will allow us to align on project specifics, introduce the team, and establish clear communication channels. We are excited about the prospect of partnering with ACME-1 and look forward to your decision.

