

Table of Contents

Introduction	3
Project Overview	3
Proposal Purpose	3
Project Scope and Requirements	3
Functional Requirements	3
Non-Functional Requirements	4
Scope Boundaries	4
Detailed Feature List	4
Technical Architecture and Design	5
Drupal APIs and Hooks	5
Integration with Existing Systems	5
Module Architecture	5
Development Plan and Timeline	6
Project Phases and Milestones	6
Detailed Timeline	6
Progress Tracking	6
Testing and Quality Assurance	7
Testing Phases	7
Bug and Issue Management	8
Acceptance Criteria	8
Deployment and Maintenance	8
Deployment Process	8
Post-Deployment Support	8
Update and Patch Management	8
Budget and Resource Allocation	9
Budget Overview	9
Resource Allocation	9
Contingency Planning	9
Team and Expertise	10
Key Personnel	10
Risks and Mitigation Strategies	10
Potential Risks	10
Mitigation Strategies	10



Contingency Plans	11
Conclusion and Next Steps	11
Proposal Highlights	11
Next Steps	11
Acceptance	11
Onboarding	11
Communication	11



Introduction

DocuPal Demo, LLC presents this proposal to Acme Inc (ACME-1) for the development of a custom Drupal module tailored to enhance your website's capabilities. This document outlines our understanding of your needs and our proposed solution to meet them.

Project Overview

ACME-1 requires a streamlined content approval workflow and automated report generation. The custom Drupal module will address these needs directly, improving efficiency and accuracy.

Proposal Purpose

This proposal details the scope of work, technical specifications, project timeline, and associated costs for the design, development, and implementation of the custom Drupal module. It also introduces our team and highlights our commitment to delivering a high-quality solution.

Project Scope and Requirements

This section details the scope of the Drupal module development project for ACME-1. It defines the functionalities to be implemented and the requirements that the module must meet. DocuPal Demo, LLC will deliver a custom Drupal module with specific features and capabilities.

Functional Requirements

The module will include a content approval workflow to streamline content publishing. Automated report generation will provide insights into key metrics. The user role management feature will allow administrators to control access levels. Customizable dashboards will offer a personalized view of relevant data for different users.



Non-Functional Requirements

The module must maintain sub-second response times to ensure optimal performance. It will adhere to OWASP security standards to protect against vulnerabilities. The module will be compatible with the latest stable version of Drupal.

Scope Boundaries

The project scope includes the development, testing, and deployment of the custom Drupal module. It also covers initial training for ACME-1 personnel on module usage. Integration with third-party CRM systems is explicitly excluded from this initial phase. Any future integration will require a separate agreement.

Detailed Feature List

- Content Approval Workflow:
 - Submission of content for review.
 - Notification to designated approvers.
 - Approval/rejection functionality with comments.
 - Automated content publishing upon approval.
- Automated Report Generation:
 - Generation of reports on content performance.
 - Customizable report templates.
 - Scheduled report delivery.
 - Export to various formats (e.g., PDF, CSV).
- User Role Management:
 - Creation of custom user roles.
 - Assignment of permissions to roles.
 - Management of user access levels.
- Customizable Dashboards:
 - Personalized dashboards for different user roles.
 - Display of key metrics and reports.
 - Drag-and-drop dashboard widgets.



Technical Architecture and Design

The custom Drupal module will be built using a modular design approach. This ensures maintainability and scalability. We will adhere to Drupal's coding standards and use object-oriented principles. This approach promotes code reusability and simplifies future enhancements.

Drupal APIs and Hooks

Our development will leverage several core Drupal APIs. The Node API will manage content creation and manipulation. The User API will handle user authentication and authorization. We will also use the Entity API for managing custom data entities. To allow for future customization, the module will include custom hooks.

Integration with Existing Systems

A key requirement is integration with Acme Inc.'s existing systems. Specifically, the module will integrate with your authentication system. We will achieve this through SAML (Security Assertion Markup Language). This ensures secure and seamless user authentication. The module will authenticate users against your existing SAML infrastructure.

Module Architecture

The module's architecture will consist of several layers. The presentation layer will handle user interface elements. The business logic layer will contain the core functionality. The data access layer will manage interactions with the Drupal database and external systems. This layered approach promotes separation of concerns.

We will follow Drupal's module development best practices. This includes using the Drupal API for all data interactions. We will also implement appropriate caching mechanisms to ensure optimal performance. The module will be designed to be compatible with future Drupal updates.

The code will be well-documented. We will follow a consistent coding style. This ensures maintainability and reduces the learning curve for future developers. Automated tests will be implemented. These tests will validate the module's functionality and ensure code quality.



Development Plan and Timeline

Our development plan ensures a structured and transparent approach to building your custom Drupal module. We will track progress closely and maintain open communication throughout the project.

Project Phases and Milestones

The project is divided into five key phases:

1. **Requirements Gathering:** This initial phase focuses on understanding your exact needs and specifications for the module.
2. **Module Development:** Our development team will build the module based on the approved requirements.
3. **Testing:** Rigorous testing will be conducted to ensure the module functions correctly and meets quality standards.
4. **Deployment:** The module will be deployed to your Drupal environment.
5. **Training:** We will provide training to your team on how to use and maintain the new module.

Detailed Timeline

We estimate the following timeline for each phase:

- **Requirements Gathering:** 2 weeks
- **Module Development:** 8 weeks
- **Testing:** 4 weeks
- **Deployment:** 2 weeks
- **Training:** 1 week

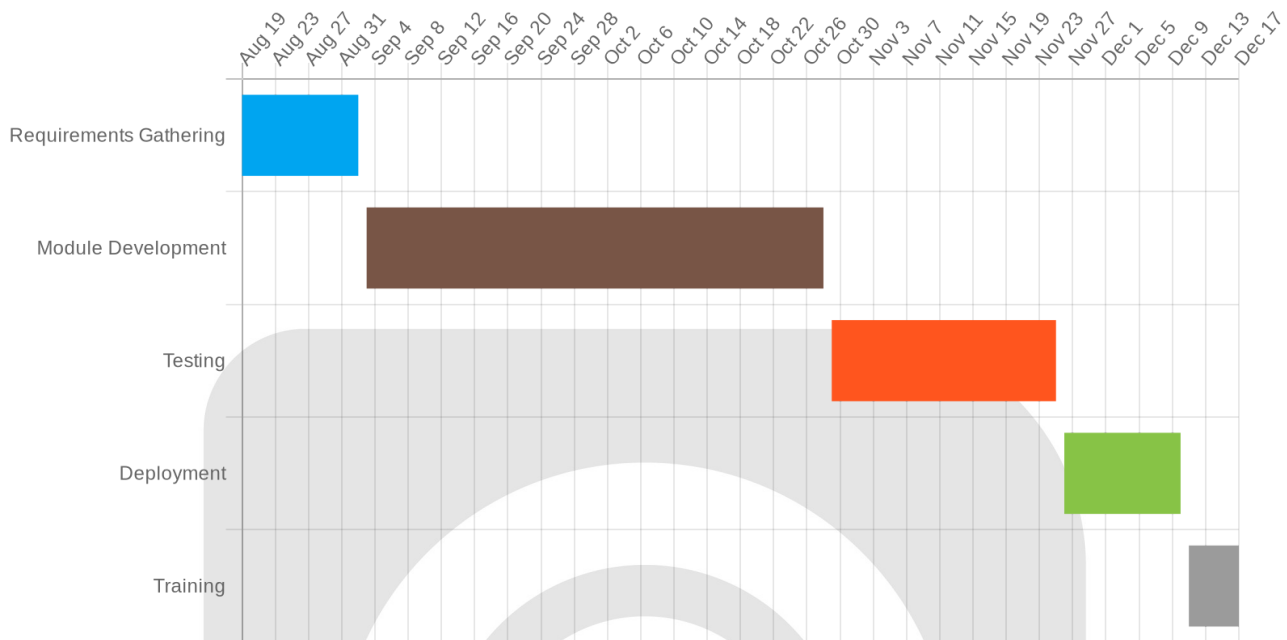
Progress Tracking

We will monitor progress using these methods:

- **Weekly Status Meetings:** Regular meetings to discuss progress, address any issues, and ensure alignment.
- **Progress Reports:** Detailed reports outlining completed tasks, upcoming milestones, and any potential roadblocks.



- **Task Tracking Software:** We will use Jira to track tasks, assign responsibilities, and monitor deadlines.



Testing and Quality Assurance

Our testing strategy ensures a robust and reliable Drupal module for ACME-1. We employ a multi-faceted approach, encompassing unit, integration, and user acceptance testing.

Testing Phases

- **Unit Testing:** Individual components of the module will undergo rigorous unit testing. This verifies that each function and method performs as expected.
- **Integration Testing:** We will conduct integration tests to confirm that different parts of the module work seamlessly together. It also confirms proper interaction with other Drupal components.
- **User Acceptance Testing (UAT):** ACME-1 will participate in UAT. This phase validates that the module meets the specified requirements and business needs.

Bug and Issue Management

We will use a dedicated bug tracking system, such as Jira, for logging and managing all identified issues. This system allows for clear communication, prioritization, and resolution tracking throughout the development lifecycle.

Acceptance Criteria

The module's acceptance depends on several factors. It includes the successful completion of all test cases and adherence to established coding standards. Final client sign-off confirms that the module satisfies ACME-1's requirements.

Deployment and Maintenance

Deployment Process

The module will first be deployed to ACME-1's staging environment. This allows for thorough testing and user acceptance testing (UAT). Following successful UAT, the module will be deployed to the production environment. We will coordinate closely with ACME-1's team to ensure a smooth and efficient deployment process.

Post-Deployment Support

Docupal Demo, LLC will provide 6 months of post-deployment support. This includes bug fixes and minor enhancements to ensure the module functions as expected in the live environment. Our team will be available to address any issues that may arise during this period.

Update and Patch Management

We will provide regular security updates and patch releases. This follows Drupal's security advisory schedule. This proactive approach helps maintain the module's security and stability over time. We will notify ACME-1 of any updates and coordinate the implementation.



Budget and Resource Allocation

Budget Overview

The total estimated cost for the Drupal module development project is \$50,000. This budget covers all project phases, from initial planning to final deployment and support. We have carefully allocated resources to ensure efficient project execution and high-quality deliverables.

Resource Allocation

Our resource allocation strategy focuses on distributing efforts across key project activities. Development constitutes the largest portion of the budget, followed by thorough testing to ensure a stable and reliable module. Project management ensures smooth coordination and communication. Comprehensive documentation supports long-term maintainability and usability. The allocation is as follows:

- Development: 40%
- Testing: 30%
- Project Management: 15%
- Documentation: 15%

Contingency Planning

To address potential unforeseen expenses, we have included a contingency budget. A 10% contingency, amounting to \$5,000, is set aside to cover unexpected challenges or scope adjustments. This ensures the project remains on track and within budget, even if unforeseen issues arise. This also allows for flexibility and proactive problem-solving throughout the development lifecycle.

Team and Expertise

Our team possesses extensive experience in Drupal module development. This includes complex integrations and custom solutions. We are confident in our ability to deliver a high-quality module that meets your specific needs.



Key Personnel

- **John Doe, Lead Developer:** John will be responsible for the module's development. He will also serve as the technical lead.
- **Jane Smith, Project Manager:** Jane will oversee the project. She will also manage client communication.
- **Peter Jones, QA Engineer:** Peter will handle testing and quality assurance.

Our team's expertise ensures a robust and reliable Drupal module for ACME-1.

Risks and Mitigation Strategies

Effective risk management is key to successful project completion. We have identified potential risks that could impact the Drupal module development project for ACME-1 and have developed mitigation strategies to minimize their impact.

Potential Risks

- **Scope Creep:** Changes to the project scope can lead to delays and increased costs.
- **Delayed Feedback:** Slow response times from ACME-1 on deliverables can hinder progress.
- **Technical Challenges:** Unforeseen technical issues may arise during development.

Mitigation Strategies

To address these risks, Docupal Demo, LLC will implement the following:

- **Scope Management:** A clearly defined project scope will be established upfront and any changes will be subject to a formal change request process.
- **Communication Plan:** Regular communication with ACME-1 will ensure timely feedback and issue resolution.
- **Proactive Risk Assessment:** Continuous monitoring for potential technical challenges will allow for early intervention.

Contingency Plans

Docupal Demo, LLC will maintain dedicated resources for troubleshooting and has established escalation procedures to address any unforeseen issues promptly.

Conclusion and Next Steps

Proposal Highlights

DocuPal Demo, LLC is committed to delivering a custom Drupal module tailored to ACME-1's specific needs. This module will be developed within the agreed-upon budget and timeline, ensuring a successful project outcome. Our comprehensive approach covers all stages, from initial planning to ongoing support.

Next Steps

Acceptance

To move forward, we kindly request that ACME-1 review and sign this proposal.

Onboarding

Following acceptance, please grant our team access to the necessary systems and designate a point of contact for streamlined communication.

Communication

We will maintain open communication through weekly status meetings, regular email updates, and a dedicated communication channel, such as Slack, to ensure alignment throughout the project.

