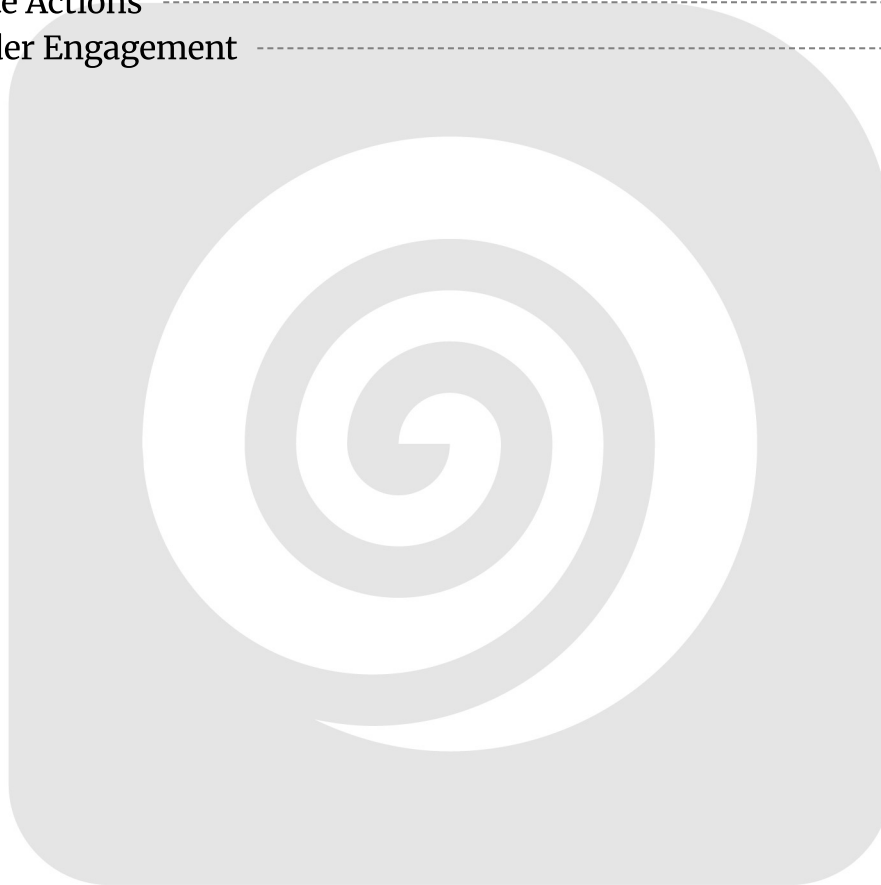


Table of Contents

Introduction	3
Project Goals	3
Target Audience	3
Project Scope and Objectives	3
Detailed Scope of Work	3
Project Boundaries	4
Key Stakeholders	4
Project Objectives	4
Technical Approach	4
Decoupled Architecture	4
Integration Strategy	5
Technology Stack	5
Performance Optimization	5
Migration and Data Integration Plan	6
Data Migration Strategy	6
Data Migration Phases and Timeline	6
Potential Risks and Mitigation	6
Security and Compliance	7
Security Features	7
Compliance Standards	7
Access Controls and Auditing	7
Performance Optimization	8
Caching and CDN Configuration	8
Scalability	8
Monitoring and Reporting	8
Workflow Automation and Content Management	8
Content Workflow Automation	9
Streamlined Editorial Processes	9
Automated User Provisioning and Testing	9
Project Timeline and Milestones	9
Project Phases and Deliverables	9
Timeline and Milestones	10
Dependencies and Risk Mitigation	11



Team and Roles	11
Docupal Demo, LLC Team	11
External Consultants	11
Benefits and ROI	12
Cost Estimate and Budget	13
Cost Components	13
Budget Breakdown	13
Budget Risk Management	13
Conclusion and Next Steps	14
Immediate Actions	14
Stakeholder Engagement	14



Introduction

Docupal Demo, LLC presents this Drupal Integration Proposal to Acme, Inc. (ACME-1). This document outlines our approach to building a unified, scalable, and secure web platform for ACME-1 using Drupal. Our goal is to enhance user engagement and streamline ACME-1's content management processes.

Project Goals

This Drupal integration project directly addresses key business challenges faced by ACME-1. These challenges include inefficient content management workflows, inconsistent user experiences across different platforms, and difficulties in scaling the current infrastructure to meet increasing traffic demands.

Target Audience

This proposal is intended for review by ACME-1's executive leadership, marketing team, IT department, and content creators. It provides a comprehensive overview of the proposed solution, implementation strategy, and expected outcomes.

Project Scope and Objectives

This Drupal integration project aims to modernize ACME-1's web presence and streamline its content management processes. DocuPal Demo, LLC will implement a suite of Drupal features to achieve these goals. The project will deliver a fully functional and integrated Drupal platform tailored to ACME-1's specific business needs.

Detailed Scope of Work

Our work includes several key areas. We will implement a robust Content Management System (CMS) for easy content creation and updates. User management features will allow controlled access and personalized experiences. Search Engine Optimization (SEO) modules will be integrated to improve online visibility. If applicable, e-commerce functionality will be implemented. Custom modules will be developed to address unique business requirements.



Project Boundaries

The project's scope focuses on the features and modules specifically outlined in section 4 of this proposal. Any integrations with systems not explicitly mentioned will be considered outside the current project scope. These integrations would require a separate proposal and agreement.

Key Stakeholders

Successful project execution requires collaboration. ACME-1's marketing, IT, and content teams will be actively involved. DocuPal Demo, LLC's development and project management teams will provide the technical expertise and project oversight.

Project Objectives

The primary objectives are to enhance ACME-1's online content management, improve user engagement, and boost search engine performance. We will deliver a scalable and secure Drupal platform. We will also ensure a smooth transition with minimal disruption to existing workflows.

Technical Approach

Our technical approach focuses on delivering a robust and scalable Drupal solution for ACME-1. We will leverage a decoupled architecture to maximize performance and user experience.

Decoupled Architecture

We propose a decoupled architecture where Drupal functions as the content repository. A React-based front-end will then consume this content. This approach offers several advantages:

- **Improved Performance:** By separating the front-end from Drupal's rendering engine, we can achieve faster page load times and a more responsive user experience.
- **Enhanced Security:** A decoupled architecture reduces the attack surface on the Drupal backend.



- **Greater Flexibility:** This approach allows for more flexibility in front-end design and development. It also facilitates easier integration with other systems and technologies.

Integration Strategy

Integration with third-party systems will be achieved through APIs and web services. This ensures seamless data exchange and functionality between Drupal and other applications used by ACME-1. We will primarily use RESTful APIs for communication. This will guarantee a standardized and efficient method for data transfer.

Technology Stack

Our development will leverage the following technologies:

- **Drupal Core APIs:** We will utilize Drupal's core APIs for content management, user authentication, and other essential functionalities.
- **Symfony Framework:** Drupal's underlying Symfony framework will be used for building custom modules and functionalities.
- **RESTful Web Services:** We will create and consume RESTful web services to integrate Drupal with external systems.

Performance Optimization

Post-integration, we anticipate significant performance improvements. The decoupled architecture and optimized code will contribute to faster page load times and improved user experience.

Migration and Data Integration Plan

Our data migration strategy ensures a smooth transition of your existing data to the new Drupal platform. This includes customer data, product catalogs, and marketing content. We will use a phased approach to minimize disruption and ensure data integrity.



Data Migration Strategy

We will employ a combination of custom migration scripts, the Drupal Migrate API, and ETL tools for the data migration process. The specific tools will be selected based on the data source and complexity of the transformation required. Data validation rules will be implemented throughout the process to ensure accuracy and consistency. We will also use encryption and secure data transfer protocols to protect sensitive data during migration.

Data Migration Phases and Timeline

The data migration process will be divided into four key phases:

1. **Assessment and Planning:** This initial phase involves a thorough analysis of your existing data sources, identifying data quality issues, and defining the data mapping rules. We will also create a detailed migration plan and timeline.
2. **Extraction and Transformation:** In this phase, we will extract data from your existing systems and transform it into a format compatible with Drupal. This may involve cleaning, normalizing, and enriching the data.
3. **Loading and Verification:** The transformed data will be loaded into the new Drupal environment. We will then conduct rigorous testing and verification to ensure data accuracy and completeness.
4. **Go-Live and Support:** Once the data has been successfully migrated and verified, we will support the go-live process and provide ongoing support to address any issues that may arise.

Potential Risks and Mitigation

Data migration inherently carries risks. These include data loss, data corruption, and system downtime. To mitigate these risks, we will implement several safeguards. First, we will perform comprehensive data backups before any migration activity. Second, we will conduct thorough testing in a staging environment before migrating data to the production environment. Third, we will closely monitor the migration process and have a rollback plan in place in case of any issues. Finally, we will maintain open communication with your team throughout the migration process to ensure alignment and address any concerns promptly.



Security and Compliance

We will implement robust security measures to protect ACME-1's data and ensure compliance with industry standards. Our approach incorporates Drupal's built-in security features and adheres to established best practices.

Security Features

We will utilize Drupal's role-based access control to manage user permissions and restrict access to sensitive data. Regular vulnerability scanning will identify and address potential security weaknesses. We will also implement a schedule of regular security updates to protect against emerging threats.

Compliance Standards

Our integration will comply with:

- **WCAG:** Ensuring accessibility for users of all abilities.
- **GDPR:** Protecting user data and privacy.
- **PCI DSS:** If e-commerce functionality is implemented, we will adhere to PCI DSS standards for secure online transactions.

Access Controls and Auditing

We will define specific user roles and permissions to control access to content and administrative functions. Audit logging will track all content changes and administrative actions, providing a detailed record for security monitoring and analysis.

Performance Optimization

We will make sure your Drupal site runs fast and efficiently. Our approach includes several key strategies.



Caching and CDN Configuration

Drupal's built-in caching will be fully utilized. We will also implement Varnish for advanced caching. To further improve speed, we will set up a Content Delivery Network (CDN) like Akamai or Cloudflare. The CDN stores your website's files on servers around the world. This means users get content from a server close to them, making the site load faster.

Scalability

We plan for growth by using cloud-based hosting. This setup lets your site handle more traffic without slowing down. Auto-scaling automatically adds more resources when needed. This ensures your site stays responsive, even during peak times.

Monitoring and Reporting

We will keep a close watch on your site's performance. We'll track server performance, application response times, and how users interact with the site. Tools like New Relic or Datadog will provide detailed data. We will then generate regular reports to keep you informed. These reports will highlight any areas that need attention and show the impact of our optimization efforts.

Workflow Automation and Content Management

We will streamline ACME-1's content management and other key processes using Drupal's robust automation capabilities. This approach reduces manual effort, minimizes errors, and accelerates overall efficiency.

Content Workflow Automation

Our strategy centers on automating content publishing workflows. We will configure Drupal to manage the complete content lifecycle, from creation to publication and archival. This includes automated notifications to relevant stakeholders at each stage.



Streamlined Editorial Processes

To improve content approval and publishing, we'll implement a multi-stage approval process within Drupal. This process will use defined editorial roles and responsibilities. Automated notifications will alert users when content requires their attention or action. This ensures timely reviews and approvals.

Automated User Provisioning and Testing

Beyond content, we will automate user account provisioning. This will ensure proper access control and security. We will also set up automated testing to maintain code quality. This proactive approach identifies and resolves issues quickly.

Project Timeline and Milestones

This section details the proposed timeline for the Drupal integration project, outlining key phases, milestones, and deliverables. We will use regular status meetings and project management software like Jira to track progress. Milestone-based reporting will keep ACME-1 informed.

Project Phases and Deliverables

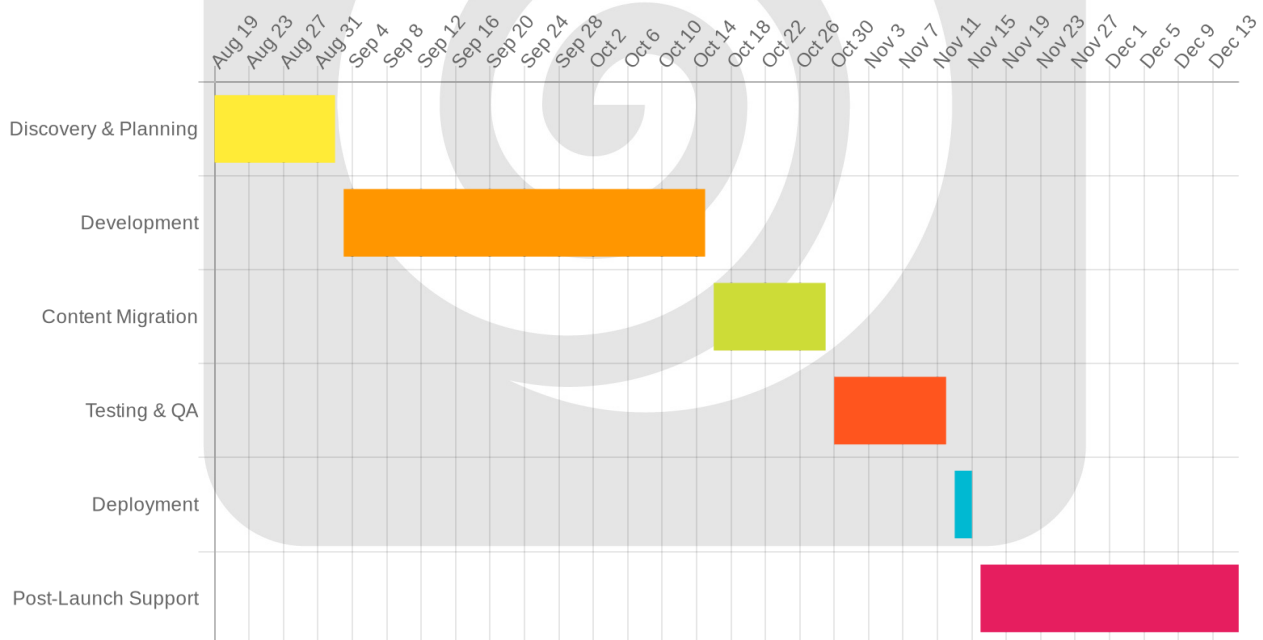
The project is divided into six critical phases:

1. **Discovery & Planning:** This initial phase focuses on gathering requirements, defining the project scope, and creating a detailed project plan.
2. **Development:** The development phase involves building the Drupal website, configuring modules, and developing custom functionalities.
3. **Content Migration:** This phase involves migrating existing content from ACME-1's current platform to the new Drupal website.
4. **Testing & QA:** Rigorous testing and quality assurance will be conducted to ensure the website functions correctly and meets ACME-1's requirements.
5. **Deployment:** The deployment phase involves launching the new Drupal website on the production server.
6. **Post-Launch Support:** We will provide ongoing support and maintenance to ensure the website operates smoothly.



Timeline and Milestones

Phase	Start Date	End Date	Deliverables
Discovery & Planning	2025-08-19	2025-09-02	Project plan, requirements document, technical specifications
Development	2025-09-03	2025-10-15	Drupal website, configured modules, custom functionalities
Content Migration	2025-10-16	2025-10-29	Migrated content
Testing & QA	2025-10-30	2025-11-12	Testing reports, bug fixes
Deployment	2025-11-13	2025-11-15	Launched Drupal website
Post-Launch Support	2025-11-16	2025-12-16	Ongoing support and maintenance



Dependencies and Risk Mitigation

This project has dependencies on third-party APIs and content availability from ACME-1. We will implement contingency planning and dedicate resources to mitigate potential risks. We will closely monitor these dependencies to ensure timely project completion.

Team and Roles

Our dedicated team at Docupal Demo, LLC, will work closely with ACME-1 to ensure a successful Drupal integration. This collaboration will involve clear roles and responsibilities to streamline communication and project execution. We believe that a well-defined team structure is crucial for achieving the project goals within the agreed timeline and budget. Our team possesses the expertise to handle all aspects of the integration, from initial planning and design to development, testing, and deployment.

Docupal Demo, LLC Team

Team Member	Role	Expertise
John Doe	Lead Developer	Drupal Certified Developer
Jane Smith	Project Manager	Agile Methodologies, Risk Management
David Lee	UX/UI Designer	User Research, Information Architecture
Emily Chen	Content Strategist	Content Audits, SEO Optimization
Michael Brown	QA Engineer	Automated Testing, Performance Testing

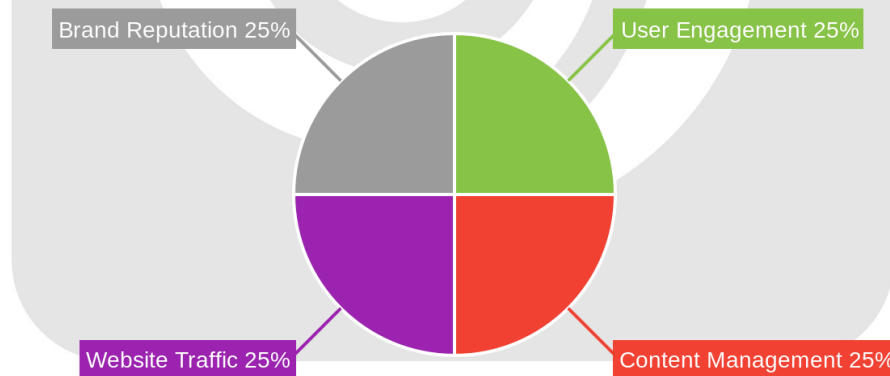
External Consultants

For specialized tasks, we may engage external consultants. These consultants will provide expertise in areas such as security audits and performance optimization, ensuring the highest standards for the integrated Drupal platform. We will ensure these consultants work seamlessly with our core team.

Benefits and ROI

Integrating Drupal will bring significant improvements to ACME-1's online presence and content management processes. We expect to see improved user engagement thanks to a more dynamic and personalized website experience. Streamlined content management will empower ACME-1's team to create, manage, and publish content more efficiently, freeing up resources for other strategic initiatives. The enhanced features and improved user experience will drive increased website traffic, expanding ACME-1's reach and visibility. Furthermore, the modern and robust Drupal platform will contribute to an enhanced brand reputation, positioning ACME-1 as an innovator in its industry.

Success will be measured through several key performance indicators (KPIs). We will track website traffic to gauge the reach and visibility of the new Drupal site. Conversion rates will indicate how effectively the website turns visitors into customers. User satisfaction scores, gathered through surveys and feedback mechanisms, will provide insights into the overall user experience. Finally, we will measure content creation efficiency to assess the impact of Drupal's streamlined content management features.



Cost Estimate and Budget

This section outlines the estimated costs for the Drupal integration project. The budget encompasses all aspects of the project, from initial development to ongoing maintenance.

Cost Components

The major cost components are:

- **Development Costs:** These cover the design, development, and testing of the Drupal platform.
- **Hosting Fees:** These are the expenses associated with hosting the Drupal site.
- **Content Migration:** This includes the cost of migrating existing content to the new Drupal platform.
- **Ongoing Maintenance:** This covers the continuous support and updates required to keep the Drupal site running smoothly.

Budget Breakdown

Item	Estimated Cost (USD)
Development	25,000
Hosting (Annual)	3,000
Content Migration	7,000
Ongoing Maintenance (Annual)	5,000
Total (Year 1)	40,000

Budget Risk Management

To manage budget risks, we will conduct regular budget reviews. A contingency fund will be set aside to address unforeseen expenses. Scope management will be employed to ensure the project stays within budget.



Conclusion and Next Steps

Immediate Actions

The next step is to schedule a kickoff meeting. This meeting will involve DocuPal Demo, LLC and ACME-1 teams. During the kickoff meeting, we will finalize project requirements. We will also agree on project timelines.

Stakeholder Engagement

ACME-1 stakeholders can engage through several channels. These include regular project meetings. Online collaboration tools will also be used. Designated points of contact will be available. These measures will ensure clear communication. They will also help address any concerns promptly.

