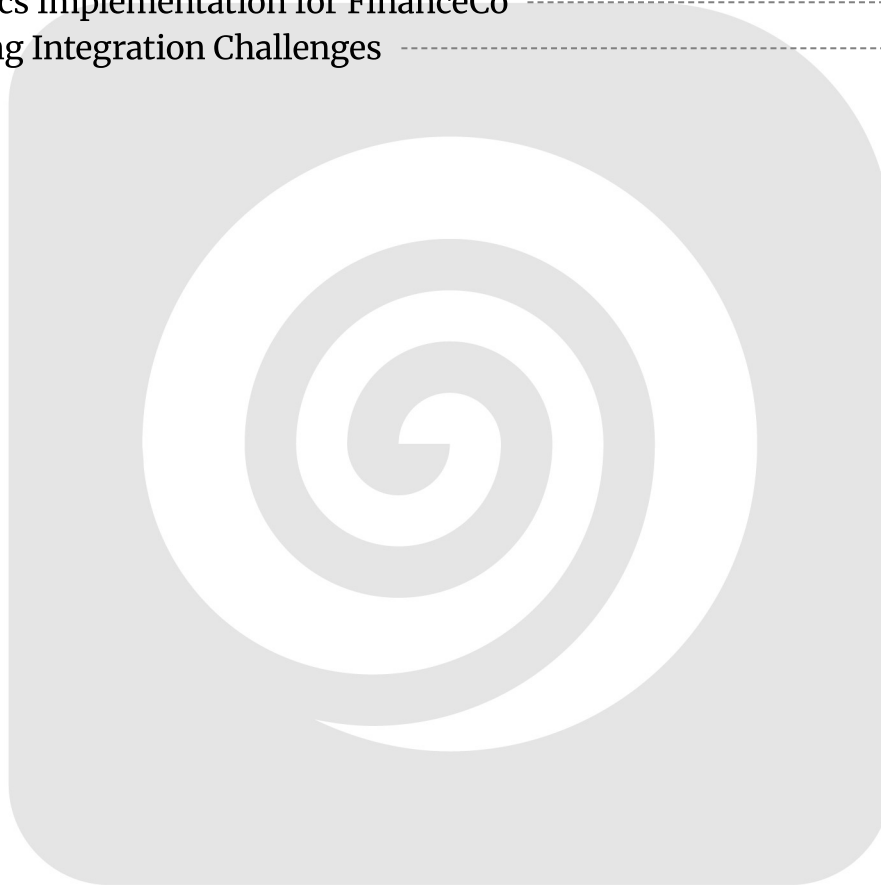


Table of Contents

Introduction	3
Purpose of this Proposal	3
Relevance of Joomla Integration	3
Market Analysis	3
Joomla Market Position	3
Market Trends and Adoption	4
Joomla CMS Market Share Growth 2018-2025	4
Target Market	4
Technical Solution Overview	4
Joomla Integration Architecture	5
Key Features	5
Technical Benefits	6
Project Implementation Plan	6
Project Phases and Timelines	6
Milestones and Deliverables	7
Risk Management	7
Progress and Quality Tracking	7
Team and Roles	8
Project Team and Roles	8
DocuPal Demo, LLC Team	8
Acme, Inc Stakeholders	9
Communication Plan	9
Budget and Financials	9
Project Costs	10
Recurring Costs	10
Budget Allocation	10
Return on Investment (ROI)	11
Risk Assessment and Mitigation	11
Potential Risks	11
Mitigation Strategies	12
Risk Monitoring	12
Conclusion and Next Steps	12
Critical Takeaways	12



Required Approvals	13
Next Actions	13
About Us	13
About DocuPal Demo, LLC	13
Our Expertise	13
Differentiators	13
Credentials	13
Portfolio and Case Studies	14
GlobalCorp Integration	14
SecureDocs Implementation for FinanceCo	14
Addressing Integration Challenges	14



Introduction

This document presents a comprehensive proposal from DocuPal Demo, LLC to Acme, Inc for the integration of DocuPal's solutions with your existing Joomla CMS. Our aim is to enhance your website's capabilities and streamline your workflows through seamless integration.

Purpose of this Proposal

The core objective of this proposal is to detail how DocuPal's expertise can be leveraged to integrate our solutions with your Joomla platform. This integration is designed to improve your content management, enhance user experience, and optimize overall website performance.

Relevance of Joomla Integration

Joomla is a powerful CMS, and integrating DocuPal's solutions will enable Acme, Inc to fully utilize its capabilities. This integration will provide technical advantages by ensuring compatibility, scalability, and maintainability. We will work closely with your team to ensure a smooth and efficient integration process.

Market Analysis

The content Management System (CMS) market is competitive and constantly evolving. Businesses need flexible and scalable solutions to manage their online presence effectively. Joomla remains a significant player, particularly among organizations requiring robust features and customization options.

Joomla Market Position

Joomla holds a notable share of the CMS market. While other platforms like WordPress have a larger overall presence, Joomla caters to a specific segment that values its advanced capabilities and control. It's often favored by businesses and organizations with complex content structures and specific requirements for user management and extensions.



Market Trends and Adoption

Several key trends influence Joomla's adoption:

- **Demand for Customization:** Businesses increasingly seek tailored solutions. Joomla's architecture allows for extensive customization, attracting those who need more than off-the-shelf functionality.
- **Focus on Security:** Security is paramount. Joomla's ongoing efforts to enhance its security features resonate with organizations handling sensitive data.
- **Growth of E-commerce:** The rise of online commerce drives demand for e-commerce extensions within CMS platforms. Joomla offers various e-commerce solutions that cater to different business needs.

Joomla CMS Market Share Growth 2018-2025

The following chart illustrates Joomla's market share growth from 2018 to 2025. While there have been fluctuations, Joomla has maintained a consistent presence, demonstrating its continued relevance in the CMS landscape.

Target Market

ACME-1, as a business operating in the United States, aligns with Joomla's target market. Companies requiring a balance of flexibility, security, and control often find Joomla to be a suitable choice. Furthermore, ACME-1's specific needs, as understood through our discussions, indicate that Joomla's capabilities can address their unique challenges effectively.

Technical Solution Overview

This section details the proposed technical solution for integrating DocuPal's capabilities with ACME-1's Joomla CMS. We will leverage Joomla version 4.x to ensure compatibility and access to the latest features and security updates. The core of our integration strategy revolves around several key components designed to enhance ACME-1's content management, security, and user experience.



Joomla Integration Architecture

Our approach involves a seamless integration via API connections to ACME-1's existing CRM and Document Management Systems. This ensures data consistency and streamlined workflows across platforms. We will implement three key Joomla extensions:

- **DocuPal Connector:** This extension serves as the bridge between the Joomla CMS and DocuPal's services, enabling secure data transfer and synchronization.
- **SmartDocs:** This extension will provide advanced document management capabilities within Joomla, allowing ACME-1 to create, store, and manage documents efficiently.
- **SecureForms:** This extension enhances the security of online forms within Joomla, protecting sensitive data and ensuring compliance with industry standards.

Key Features

The integrated solution will offer several key features designed to address ACME-1's specific needs:

- **Centralized Content Management:** Manage all digital assets, including documents, images, and videos, from a single interface within Joomla.
- **Automated Workflows:** Streamline document creation, review, and approval processes with automated workflows.
- **Enhanced Security:** Protect sensitive data with robust security features, including access controls, encryption, and audit trails.
- **Improved User Experience:** Provide a seamless and intuitive user experience for both internal users and external customers.
- **Real-time Data Synchronization:** Ensure data consistency across all systems with real-time data synchronization between Joomla, the CRM, and the Document Management System.

Technical Benefits

The proposed solution offers significant technical advantages:



- **Enhanced Security:** By implementing SecureForms and integrating with existing security protocols, we will significantly enhance the security of ACME-1's Joomla website.
- **Streamlined Content Management:** The SmartDocs extension, coupled with the DocuPal Connector, will streamline content management, making it easier for ACME-1 to create, manage, and publish content.
- **Improved User Experience:** A seamless integration between Joomla and DocuPal's services will provide a better user experience for both internal users and external customers, leading to increased engagement and satisfaction.
- **Increased Efficiency:** Automating workflows and centralizing content management will increase efficiency and reduce operational costs.
- **Scalability:** The solution is designed to be scalable, allowing ACME-1 to easily adapt to changing business needs.

Project Implementation Plan

This section details the plan for integrating DocuPal's solutions with ACME-1's Joomla CMS. The plan outlines the phases, milestones, deliverables, timelines, and resources required for successful implementation. We are committed to a smooth and efficient integration process.

Project Phases and Timelines

The project will be executed in five key phases:

1. **Planning (2 weeks):** This phase involves detailed requirements gathering, system analysis, and project scope definition. A comprehensive project plan will be created.
2. **Development (6 weeks):** During this phase, our team will develop and configure the integration components, ensuring compatibility with ACME-1's Joomla environment.
3. **Testing (2 weeks):** Thorough testing will be conducted to identify and resolve any issues. This includes unit testing, integration testing, and user acceptance testing (UAT).
4. **Deployment (1 week):** The integrated solution will be deployed to the production environment. This phase includes data migration and system configuration.
5. **Training & Support (Ongoing):** We will provide comprehensive training to ACME-1's staff and ongoing support to ensure the system operates smoothly.



Milestones and Deliverables

Phase	Milestone	Deliverable	Timeline
Planning	Project Plan Finalized	Detailed Project Plan Document	Week 2
Development	Integration Components Developed	Functional Integration Modules	Week 8
Testing	User Acceptance Testing (UAT) Completed	UAT Sign-off Document, Resolved Bug List	Week 10
Deployment	System Deployed	Integrated System in Production Environment	Week 11
Training	Training Complete	Training Materials, Trained ACME-1 Staff	Ongoing

Risk Management

We have identified potential risks and developed mitigation strategies:

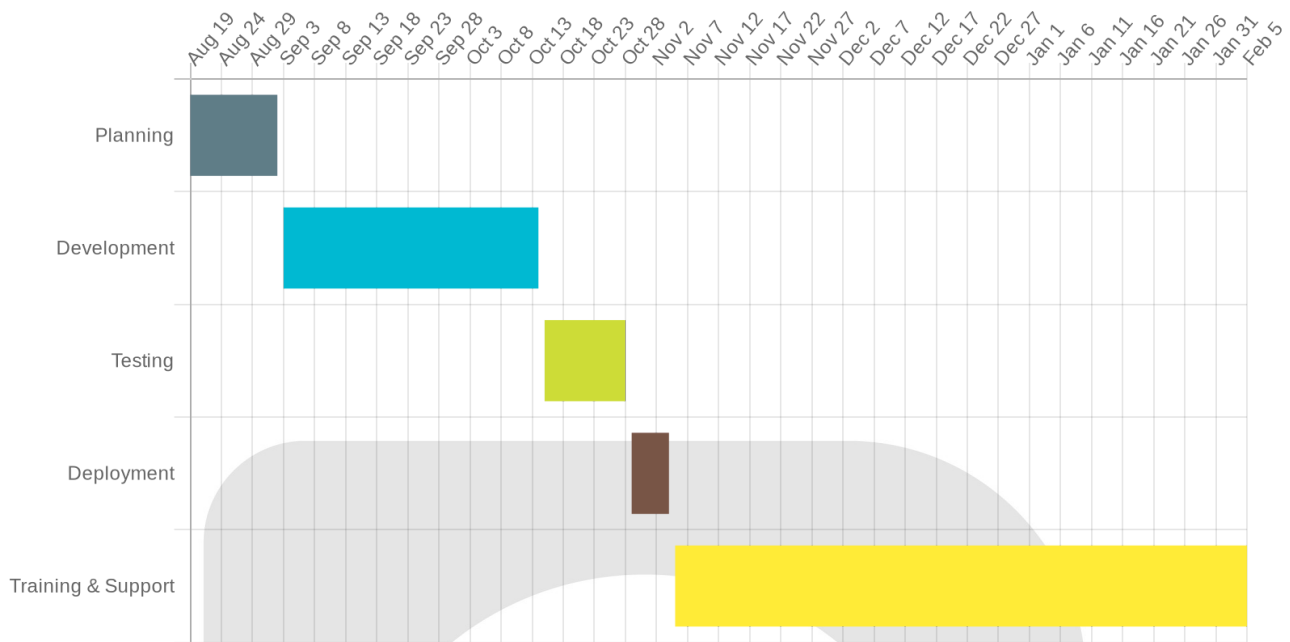
- **Data migration complexities:** We will conduct thorough data mapping and validation to ensure data integrity.
- **Security vulnerabilities:** We will implement robust security measures and conduct regular security audits.
- **Compatibility issues:** We will perform rigorous testing to ensure compatibility with ACME-1's Joomla version and other systems.

Progress and Quality Tracking

Progress will be monitored through:

- Weekly progress reports detailing completed tasks, milestones achieved, and any issues encountered.
- Regular code reviews to ensure code quality and adherence to coding standards.
- User acceptance testing (UAT) to ensure the solution meets ACME-1's requirements.





Team and Roles

Project Team and Roles

Our team's structure ensures clear accountability and efficient communication for your Joomla integration project. We will use a collaborative approach, working closely with your team to achieve your goals.

DocuPal Demo, LLC Team

- **Project Manager:** John Doe will oversee the entire project lifecycle. He will manage timelines, resources, and communication, ensuring the project stays on track and within budget.
- **Lead Developer:** Jane Smith will lead the technical implementation of the Joomla integration. She will ensure seamless integration with your existing systems.

Acme, Inc Stakeholders

- **IT Team:** Your IT team will provide system access and technical support during the integration process. They will collaborate with our development team to address any technical challenges.
- **Marketing Team:** Your marketing team will be involved in content migration and user testing. Their feedback will ensure the integrated solution meets your content management and user experience requirements.

Communication Plan

We will maintain open and consistent communication throughout the project using these channels:

- **Daily Stand-up Meetings:** Brief daily meetings to discuss progress, address roadblocks, and align on priorities.
- **Weekly Project Meetings:** More detailed weekly meetings to review project status, discuss milestones, and plan upcoming tasks.
- **Dedicated Slack Channel:** A dedicated Slack channel for quick communication, questions, and updates. This will facilitate real-time collaboration between both teams.

This structure promotes transparency and allows for quick resolution of any issues that may arise.

Budget and Financials

This section details the financial aspects of the Joomla integration project. It outlines the costs associated with each phase, as well as ongoing expenses and the expected return on investment (ROI) for ACME-1. All costs are in USD.

Project Costs

The project is divided into five phases. Each phase has a specific cost associated with it. The table below breaks down the estimated costs for each phase:

Phase	Description	Estimated Cost
1	Planning and Design	\$5,000



Phase	Description	Estimated Cost
2	Development and Integration	\$15,000
3	Testing and Quality Assurance	\$3,000
4	Deployment and Training	\$2,000
5	Support and Maintenance Setup	\$5,000
Total		\$30,000

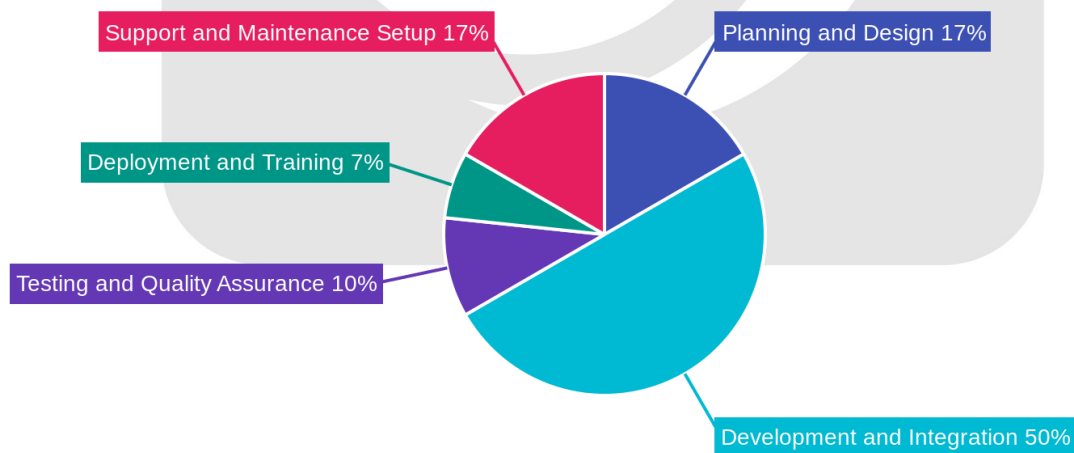
Recurring Costs

In addition to the initial project costs, there are also recurring expenses to consider. These include:

- **DocuPal Connector License:** \$500 per year. This license is required to maintain the integration between DocuPal and Joomla.
- **Hosting Costs:** These costs will vary depending on the hosting provider and resources required. ACME-1 is responsible for covering these costs.

Budget Allocation

The following pie chart illustrates the allocation of the \$30,000 project budget across the five phases:



Return on Investment (ROI)

The integration of DocuPal with ACME-1's Joomla CMS is expected to provide a significant return on investment. This will be achieved through:

- **Improved Document Workflow Efficiency:** Automating document processes will save time and resources.
- **Reduced Manual Errors:** Integration minimizes manual data entry, reducing the risk of errors.
- **Increased Customer Satisfaction:** Faster and more accurate document handling will improve the customer experience.

While a precise financial quantification of these benefits is difficult to provide upfront, DocuPal Demo, LLC is confident that the integration will deliver substantial value to ACME-1. We recommend tracking key performance indicators (KPIs) related to document processing time, error rates, and customer satisfaction to measure the ROI over time.

Risk Assessment and Mitigation

We have identified potential risks associated with the Joomla integration project. These risks span technical, operational, and security domains. We have developed mitigation strategies to minimize their impact.

Potential Risks

- **Data Breaches:** Unauthorized access to sensitive data is a significant concern.
- **System Downtime:** Integration activities may disrupt normal operations.
- **Integration Failures:** Compatibility issues or errors during implementation could lead to unsuccessful integration.

Mitigation Strategies

To address these risks, we will implement the following strategies:

- **Data Security:** We will conduct thorough security audits and implement robust access controls to prevent data breaches. This includes employing encryption methods and adhering to data privacy regulations.



- **Downtime Minimization:** Integration activities will be scheduled during off-peak hours to minimize disruption. We will also provide a detailed rollback plan to revert to the previous system state in case of critical issues.
- **Integration Assurance:** We will conduct comprehensive testing throughout the integration process. This includes unit tests, integration tests, and user acceptance testing (UAT) to identify and resolve potential issues early on.

Risk Monitoring

We will continuously monitor system logs, security alerts, and user feedback to proactively identify and address potential risks. This monitoring will allow us to respond quickly to any emerging issues and ensure the smooth and secure operation of the integrated system. Regular data backups will also be performed. We will maintain up-to-date backups to ensure business continuity in the event of a system failure or data loss.

Conclusion and Next Steps

This proposal outlines how DocuPal Demo, LLC will integrate its solutions with ACME-1's Joomla CMS, offering seamless integration, enhanced security, and improved operational efficiency. Our approach leverages proven methodologies and our team's extensive experience to ensure a successful implementation.

Critical Takeaways

The integration will streamline workflows and enhance data protection. It also offers a strong return on investment through increased productivity and reduced operational costs.

Required Approvals

To move forward, we require your approval of this proposal. This includes the proposed budget allocation for the project.



Next Actions

Upon acceptance, the subsequent steps involve scheduling a kickoff meeting. This meeting will align project stakeholders. We will also need ACME-1 to provide the necessary system access credentials to begin the integration process.

About Us

About DocuPal Demo, LLC

DocuPal Demo, LLC, located at 23 Main St, Anytown, CA 90210, is a United States-based company specializing in document management solutions and integration services. Our base currency is USD. We are committed to delivering customer satisfaction through expert solutions tailored to meet unique business needs.

Our Expertise

We possess over five years of experience in Joomla development and integration. This extensive experience allows us to provide seamless and efficient integration services for our clients.

Differentiators

Our team's expertise in document management solutions sets us apart. We focus on providing solutions and ensuring customer satisfaction throughout the entire project lifecycle.

Credentials

We are a Joomla Certified Developer. Our past projects include a successful integration with GlobalCorp. This integration resulted in a 30% efficiency gain for GlobalCorp's document management processes. We bring this proven track record to every project.



Portfolio and Case Studies

DocuPal Demo, LLC brings a wealth of experience to Joomla integration. Our past projects demonstrate our ability to deliver effective solutions. We have a proven track record of success.

GlobalCorp Integration

We successfully integrated our document management system with GlobalCorp's Joomla platform. This project involved a complex migration of their existing content. We ensured seamless data transfer and minimal disruption to their operations. The integration improved GlobalCorp's content workflow. This resulted in a 30% reduction in their document processing time.

SecureDocs Implementation for FinanceCo

FinanceCo needed a secure document repository within their Joomla environment. We implemented SecureDocs, our advanced security solution. This provided FinanceCo with granular access controls and audit trails. It ensured compliance with industry regulations. Compatibility issues were resolved through custom API development. This further enhanced the integration. Customer satisfaction increased by 20% following the implementation.

Addressing Integration Challenges

We understand the challenges that can arise during Joomla integrations. Our team is skilled at resolving compatibility issues. We develop custom APIs when necessary. Our focus is on ensuring a smooth and efficient integration process. We prioritize the client's needs. We tailor our approach to each unique project.

