

# Table of Contents

<b>Introduction and Objectives</b>	<b>3</b>
Introduction	3
Objectives	3
Primary Goals	3
Drivers for Migration	3
Stakeholders	3
<b>Current Joomla Environment Assessment</b>	<b>4</b>
Extensions and Customizations	4
Technical Debt and Compatibility	4
Content Complexity	5
<b>Migration Strategy and Scope</b>	<b>5</b>
Approach to Migration	5
Scope of Work	5
Content Migration Plan	6
Technical Considerations	6
<b>Project Plan and Timeline</b>	<b>6</b>
Project Phases and Timeline	7
Resource Allocation	8
<b>Risk Management and Mitigation</b>	<b>8</b>
Risk Identification	8
Mitigation Strategies	9
Risk Tracking and Management	9
Fallback Plans	9
<b>SEO and Performance Preservation</b>	<b>10</b>
URL Structure and Redirects	10
Downtime Minimization	10
Post-Migration Monitoring	10
<b>Testing and Quality Assurance</b>	<b>11</b>
Test Plans and Success Criteria	11
Bug Tracking and Resolution	11
<b>Training and Documentation</b>	<b>12</b>
Training	12
Documentation	12



Knowledge Transfer .....	13
<b>Post-Migration Support and Maintenance .....</b>	<b>13</b>
Support Levels and Response Times .....	13
Ongoing Maintenance .....	13
Service Level Agreement (SLA) and Warranty .....	13
<b>Budget and Cost Estimates .....</b>	<b>14</b>
Migration Phase Costs .....	14
Post-Launch Support .....	14
Contingency Budget .....	14
Cost Overrun Management .....	14
<b>Conclusion and Next Steps .....</b>	<b>15</b>
Key Benefits .....	15
Required Approvals and Decisions .....	15
Immediate Next Steps .....	15



# Introduction and Objectives

## Introduction

DocuPal Demo, LLC is pleased to present this proposal to Acme, Inc (ACME-1) for the migration of your Joomla website. This document outlines our approach to ensure a smooth, efficient, and successful migration process. We understand that your organization, ACME-1, requires a modern and secure online presence. Our team is prepared to deliver a solution that meets your needs.

## Objectives

### Primary Goals

The primary goals of this Joomla migration project are to:

- Improve website performance
- Enhance website security
- Implement modern features and functionalities

### Drivers for Migration

Several business and technical drivers necessitate this migration. Your current Joomla version has reached its end-of-life, creating potential security vulnerabilities. Additionally, ACME-1 requires a responsive website design to ensure optimal viewing across all devices. This migration will also improve search engine optimization (SEO) performance.

## Stakeholders

Key stakeholders in this project include:

- Acme Inc. Marketing Team
- Acme Inc. IT Department
- DocuPal Demo, LLC Project Team



We will work closely with all stakeholders throughout the migration process to ensure alignment and satisfaction.

## Current Joomla Environment Assessment

ACME-1 currently utilizes Joomla version 2.5. This version is significantly outdated and no longer supported by the Joomla community, presenting potential security risks and compatibility challenges.

### Extensions and Customizations

The existing Joomla installation includes several key extensions:

- **JomSocial:** An outdated version of JomSocial is installed. This poses a challenge due to potential incompatibility with newer Joomla versions and security vulnerabilities.
- **VirtueMart:** The installation also includes VirtueMart. Compatibility issues with the current Joomla version and potential target versions need careful assessment.
- **Custom Modules:** Custom modules for event management are present. These modules will require thorough review and potential modifications to ensure proper functionality within a modern Joomla environment.

### Technical Debt and Compatibility

Known technical debt exists primarily due to the outdated JomSocial version. This can lead to conflicts during migration and require significant rework or replacement. VirtueMart compatibility issues also present a challenge. A comprehensive compatibility assessment is crucial to determine the extent of modifications needed for these extensions.

### Content Complexity

The website contains a substantial amount of content, including articles, media files, and user data associated with JomSocial and VirtueMart. The complexity of the content structure will influence the migration strategy and timeline. A content audit is recommended to identify obsolete or redundant content that can be archived or removed prior to migration, streamlining the process and reducing the overall migration effort.



# Migration Strategy and Scope

Docupal Demo, LLC will employ a comprehensive migration strategy to transition Acme, Inc.'s Joomla website to the new environment. This strategy balances efficiency with data integrity, ensuring a smooth transition and minimal disruption to ACME-1's online presence.

## Approach to Migration

We will use a hybrid approach, combining automated tools and manual adjustments. This allows us to leverage the speed of automation for content migration while ensuring precision and customization where needed, particularly with templates and extensions. The migration will be performed in a staged environment, allowing for thorough testing and validation before the final cutover to the live site.

## Scope of Work

The scope of this migration encompasses the following key areas:

- **Content Migration:** Articles and user accounts will be migrated to the new Joomla installation.
- **E-commerce Data Migration:** VirtueMart product data will be migrated, ensuring product information, descriptions, and images are accurately transferred.
- **Social Profile Redesign:** JomSocial profiles will be redesigned to align with the new Joomla template.
- **Extension Migration:** Key extensions will be migrated and configured to ensure functionality within the new environment.
- **Template Integration:** The existing template will be adapted or a new template will be integrated to provide a modern and responsive design.
- **Deprecated Modules:** Custom event management modules will be deprecated and will not be migrated.

## Content Migration Plan

To ensure data integrity and content fidelity, we will implement the following measures:



1. **Database Backups:** Complete database backups will be performed before any migration activities commence.
2. **Content Audits:** A content audit will be conducted to identify and address any inconsistencies or outdated information.
3. **Pre-Migration Data Validation:** Data will be validated before migration to ensure it meets the requirements of the new Joomla environment.
4. **Post-Migration Data Validation:** After migration, a thorough data validation process will be conducted to verify the accuracy and completeness of the migrated content.

## Technical Considerations

The migration process will take into account several technical considerations:

- **Joomla Version Compatibility:** We will ensure compatibility between the existing Joomla version and the target version.
- **PHP Compatibility:** The PHP version of the new hosting environment will be assessed and adjusted as needed to ensure compatibility with Joomla and its extensions.
- **Database Compatibility:** The database system (e.g., MySQL) will be evaluated to ensure compatibility and optimal performance.
- **Extension Updates:** Extensions will be updated to the latest versions to address any security vulnerabilities and improve functionality.
- **SEO Preservation:** Redirects and other SEO best practices will be implemented to maintain search engine rankings during and after the migration.

## Project Plan and Timeline

This section details the plan for the Joomla migration project. It includes key phases, timelines, resource allocation, and milestones. Docupal Demo, LLC will work closely with ACME-1 to ensure a smooth and successful migration.

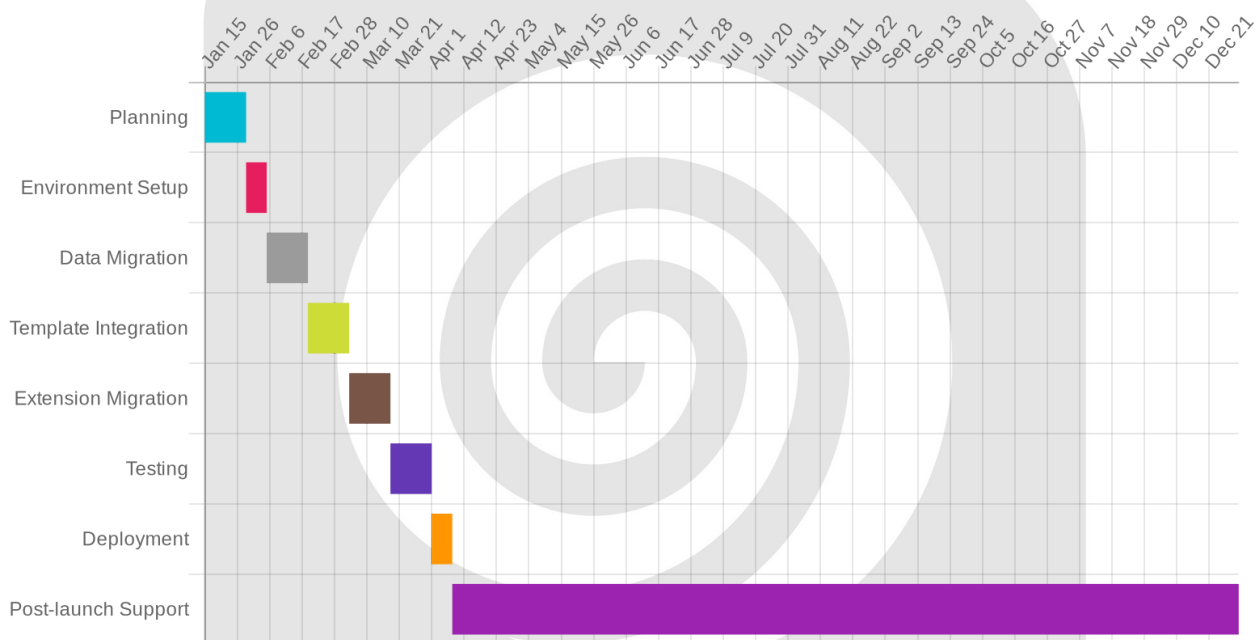
### Project Phases and Timeline

The migration will be completed in eight major phases. Each phase has a defined start and end date to keep the project on track.





Phase	Start Date	End Date
Planning	2024-01-15	2024-01-29
Environment Setup	2024-01-29	2024-02-05
Data Migration	2024-02-05	2024-02-19
Template Integration	2024-02-19	2024-03-04
Extension Migration	2024-03-04	2024-03-18
Testing	2024-03-18	2024-04-01
Deployment	2024-04-01	2024-04-08
Post-launch Support	2024-04-08	Ongoing



## Resource Allocation

Docupal Demo, LLC will provide a dedicated team. This team includes a Project Manager, Joomla Developers, a Database Administrator, and a Content Specialist. Resources will be allocated as needed throughout the project. A budget is allocated for necessary tools and services to support the migration.



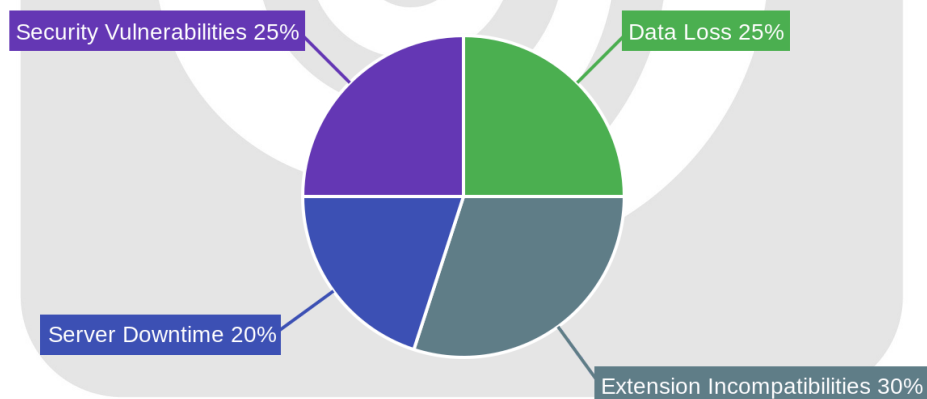
# Risk Management and Mitigation

We recognize that migrating your Joomla 2.5 website to a newer version involves inherent risks. We will actively manage these risks to ensure a smooth and successful transition for ACME-1. Our approach includes identifying, assessing, and mitigating potential issues throughout the project lifecycle.

## Risk Identification

We have identified several potential risks that could impact the migration project:

- **Data Loss:** There is a risk of data loss during the migration process.
- **Extension Incompatibilities:** Existing Joomla 2.5 extensions may not be compatible with the target Joomla version.
- **Server Downtime:** Downtime during the migration could disrupt ACME-1's operations.
- **Security Vulnerabilities:** The migration process could introduce new security vulnerabilities if not handled carefully.



## Mitigation Strategies

For each identified risk, we will implement specific mitigation strategies:



- **Data Loss:** We will perform comprehensive database backups before, during, and after the migration. We will also implement data verification procedures to ensure data integrity.
- **Extension Incompatibilities:** We will conduct a thorough audit of all existing extensions to identify any compatibility issues. We will then explore options such as updating, replacing, or removing incompatible extensions.
- **Server Downtime:** We will minimize downtime by performing the migration during off-peak hours. We will also use a staging environment to test the migration process before deploying it to the live server.
- **Security Vulnerabilities:** We will follow security best practices throughout the migration process. We will also conduct security audits and penetration testing to identify and address any potential vulnerabilities.

## Risk Tracking and Management

We will use a risk register to track all identified risks, their potential impact, and the planned mitigation strategies. The risk register will be regularly updated throughout the project. We will also hold regular status meetings with ACME-1 to discuss any emerging risks and to review the effectiveness of our mitigation strategies.

## Fallback Plans

In the event of a major issue, we have the following fallback plans in place:

- **Rollback:** We can rollback to the existing Joomla 2.5 environment if necessary.
- **Database Backups:** We maintain complete database backups to restore the website to a previous state.
- **Content Freeze:** If required, we implement a content freeze to minimize data changes during the migration window.

## SEO and Performance Preservation

Maintaining your search engine optimization (SEO) and website performance is critical during the Joomla migration. We will employ several strategies to ensure a smooth transition with minimal disruption to your online visibility and user experience.



## URL Structure and Redirects

We understand the importance of consistent URL structures for SEO. During the migration, we will prioritize preserving your existing URL architecture. Where changes are unavoidable, we will implement 301 redirects. These redirects will seamlessly guide users and search engines from old URLs to their new counterparts, preserving link equity and preventing broken links. We will also use Joomla's URL rewriting capabilities to maintain clean and SEO-friendly URLs.

## Downtime Minimization

We aim to minimize downtime throughout the migration process. Our approach includes staged deployment, where we migrate the site in phases. This reduces the risk of prolonged outages. We also implement caching mechanisms to improve page load times and overall performance. Furthermore, we will utilize a content delivery network (CDN) to distribute your website's content across multiple servers. This ensures fast loading times for users, regardless of their location.

## Post-Migration Monitoring

After the migration, we will closely monitor your website's performance using various tools. Google Analytics will provide insights into traffic patterns, user behavior, and SEO performance. We will also use server monitoring tools to track server health, response times, and potential issues. Load testing will simulate user traffic to identify and address any performance bottlenecks.

## Testing and Quality Assurance

A rigorous testing and quality assurance process is critical to ensure a smooth and successful Joomla migration for ACME-1. We will employ a multi-faceted approach, including functional testing, performance testing, and security testing. ACME-1's IT Department and DocuPal Demo, LLC's QA Team will collaborate throughout the testing process.



## Test Plans and Success Criteria

Our testing strategy will validate the website's functionality, performance, and security compliance post-migration. Specific success criteria will be defined for each area.

- **Functional Testing:** We will verify all website features are working as expected. This includes navigation, forms, user logins, content display, and any custom functionalities. The success criterion is that all features function identically or better than before the migration.
- **Performance Testing:** We will assess the website's loading speed, responsiveness, and stability under normal and peak traffic conditions. Tools will measure page load times, server response times, and concurrent user capacity. The success criterion is that the website performance meets or exceeds pre-migration levels, with acceptable loading times and no performance bottlenecks.
- **Security Testing:** We will conduct security assessments to identify and address potential vulnerabilities. This will include vulnerability scanning, penetration testing, and security audits. The success criterion is that the website is free from known vulnerabilities and meets industry security standards.
- **User Acceptance Testing (UAT):** ACME-1's designated users will perform UAT to validate the migrated website meets their expectations and business requirements. This testing covers all aspects of user experience and workflows.

## Bug Tracking and Resolution

We will use a centralized bug tracking system (Jira) to manage and resolve any issues identified during testing. Each bug will be assigned to a specific developer with a defined resolution deadline. Regular progress updates will be provided to ACME-1. The bug tracking system will maintain a detailed record of all issues, their status, and resolution steps.

## Training and Documentation

To ensure a smooth transition and effective utilization of the migrated Joomla platform, DocuPal Demo, LLC will provide comprehensive training and documentation to ACME-1. Our approach focuses on empowering your team with



the knowledge and resources necessary to manage and maintain the new system.

## Training

We will deliver targeted training programs for both administrators and content editors.

- **Administrator Training:** This will cover system configuration, user management, security settings, and extension management.
- **Content Editor Training:** This will focus on content creation, editing, and publishing workflows within the migrated Joomla environment.

Training will be delivered through a combination of methods:

- **Online Training Sessions:** Interactive sessions allowing real-time Q&A.
- **Video Tutorials:** Step-by-step guides for common tasks and functionalities.

## Documentation

DocuPal Demo, LLC will provide ACME-1 with the following documentation:

- **Migration Plan:** A detailed record of the migration process, including timelines, tasks, and responsible parties.
- **Database Schema:** Documentation outlining the structure of the migrated database.
- **Extension Configurations:** Detailed configurations for all installed extensions.
- **User Guides:** Comprehensive guides for both administrators and content editors.

## Knowledge Transfer

To further facilitate knowledge transfer, we will provide access to a dedicated code repository and conduct knowledge-sharing sessions with ACME-1's technical team. This ensures a complete understanding of the migrated system and empowers ACME-1 to independently manage and maintain the platform moving forward. User manuals are also provided to help in onboarding new users.



# Post-Migration Support and Maintenance

DocuPal Demo, LLC will provide comprehensive support and maintenance services to ACME-1 following the Joomla migration to ensure a smooth transition and optimal performance of the new system. Our support services include ongoing monitoring, troubleshooting, and maintenance to address any issues that may arise.

## Support Levels and Response Times

We offer two support levels to meet your specific needs:

- **Standard Support:** This includes an 8-hour response time during business hours.
- **Premium Support:** This provides a 2-hour response time, ensuring rapid assistance for critical issues.

## Ongoing Maintenance

Our maintenance services encompass:

- **Regular Security Updates:** We will apply the latest security patches to protect your Joomla site from vulnerabilities.
- **Performance Monitoring:** We will continuously monitor your website's performance to identify and resolve any bottlenecks.
- **Content Updates:** We can assist with content updates and modifications as needed.

## Service Level Agreement (SLA) and Warranty

We provide a 90-day warranty on all migrated functionality. This warranty covers any defects or malfunctions in the migrated components. Additionally, our SLA guarantees uptime and specific response times based on your chosen support level, ensuring reliability and prompt assistance.





# Budget and Cost Estimates

This section details the estimated costs associated with the Joomla migration project for ACME-1. All costs are expressed in USD, our base currency.

## Migration Phase Costs

The total estimated cost for the Joomla migration is broken down by phase.

- **Planning:** \$2,000
- **Environment Setup:** \$1,500
- **Data Migration:** \$4,000
- **Template Integration:** \$5,000
- **Extension Migration:** \$3,500
- **Testing:** \$2,000
- **Deployment:** \$1,000

## Post-Launch Support

Ongoing support will be provided at a rate of \$1,000 per month, commencing after the deployment phase.

## Contingency Budget

A contingency budget of 10% has been allocated to cover unforeseen issues that may arise during the migration process. The contingency amount is calculated as 10% of the total migration phase costs ( $\$2,000 + \$1,500 + \$4,000 + \$5,000 + \$3,500 + \$2,000 + \$1,000 = \$19,000$ ). Therefore, the contingency budget is \$1,900.

## Cost Overrun Management

Any potential cost overruns will be managed through a formal change request process. This process includes a detailed assessment of the overrun, documentation of the causes, and a proposed solution. Approval from ACME-1 stakeholders will be required before any budget reallocation or additional spending is authorized. This ensures transparency and control over project finances.



# Conclusion and Next Steps

This proposal details our approach to migrate ACME-1's website to the latest Joomla version. The migration will provide a more modern website with improved performance and enhanced security features.

## Key Benefits

The updated Joomla platform will offer several key advantages, including:

- Improved website performance and speed.
- Enhanced security features to protect against vulnerabilities.
- A modern and user-friendly website design.

## Required Approvals and Decisions

To proceed, we require the following approvals from ACME-1:

- Approval of the proposed migration plan.
- Budget approval for the project costs.
- Confirmation of allocated resources from ACME-1's team.

## Immediate Next Steps

The immediate next step is to schedule a kickoff meeting with ACME-1's key stakeholders. This meeting will allow us to:

- Review the migration plan in detail.
- Address any questions or concerns.
- Establish clear communication channels.
- Finalize the project timeline and resource allocation.

Following the kickoff meeting and upon receiving the necessary approvals, we can begin the migration process.

