

# Table of Contents

<b>Introduction and Executive Summary</b>	<b>3</b>
Introduction	3
Executive Summary	3
Key Benefits	3
Proposal Overview	3
<b>Market Analysis and Opportunity</b>	<b>4</b>
Target Markets	4
E-commerce Growth Drivers	4
Competitive Landscape	4
E-commerce Market Trends 2020-2025	5
<b>Proposed Solution Overview</b>	<b>5</b>
Key Features	5
Workflow and Operational Improvements	6
Unique Advantages	6
Example: Pricing Table	6
<b>Technical Requirements and Architecture</b>	<b>6</b>
Prerequisites	7
API Integrations	7
Data Flow	7
System Architecture	7
<b>Implementation Plan and Timeline</b>	<b>7</b>
Project Implementation	8
Project Phases and Milestones	8
Project Timeline	8
Resource Allocation	9
<b>Pricing and Budget Estimation</b>	<b>9</b>
Cost and Budget Overview	9
One-Time Costs	10
Recurring Costs	10
Cost Breakdown	10
Customization and Scale Considerations	10
Contingency	10
<b>Support, Maintenance, and Training</b>	<b>11</b>



Support .....	11
Maintenance .....	11
Training .....	12
<b>Risk Assessment and Mitigation Strategies .....</b>	<b>12</b>
Potential Risks .....	12
Mitigation Strategies .....	12
Monitoring and Fallback .....	13
<b>Conclusion and Next Steps .....</b>	<b>13</b>
Immediate Actions .....	13



# Introduction and Executive Summary

## Introduction

DocuPal Demo, LLC presents this PrestaShop Integration Proposal to Acme, Inc ("ACME-1") to outline a comprehensive plan for integrating your systems with the PrestaShop e-commerce platform. This integration aims to streamline your e-commerce operations, enhance efficiency, and improve customer experience.

## Executive Summary

This proposal details the strategy, features, and implementation plan for a seamless integration of ACME-1's product catalog and order management system with PrestaShop. The primary goal is to reduce manual data entry, improve order accuracy, and provide a more efficient workflow for your teams. This document is targeted towards ACME-1's executive team, e-commerce managers, IT department, and marketing team, providing each with the information they need to evaluate the project's benefits.

## Key Benefits

The integration offers several key advantages:

- **Increased Efficiency:** Automate processes and reduce manual work.
- **Reduced Manual Data Entry:** Eliminate errors and save time.
- **Improved Order Accuracy:** Ensure precise order fulfillment.
- **Enhanced Customer Experience:** Provide a seamless shopping experience.

## Proposal Overview

This proposal covers the following key areas:

- A detailed analysis of your current systems and processes.
- A comprehensive integration plan with clear milestones.
- A breakdown of costs and timelines.
- An overview of ongoing support and maintenance.
- Risk management strategies to ensure a successful project.



# Market Analysis and Opportunity

The integration of Acme, Inc.'s systems with PrestaShop presents a significant opportunity, driven by current e-commerce market trends and the potential for expansion within target markets. This analysis outlines the factors contributing to this favorable outlook.

## Target Markets

Our primary focus will be North America and Europe. We are targeting tech-savvy consumers aged 25-55. These demographics are characterized by their high adoption rates of online shopping, familiarity with digital platforms, and demand for personalized online experiences.

## E-commerce Growth Drivers

Several key factors are fueling e-commerce growth:

- **Increased Online Shopping Adoption:** A growing number of consumers are shifting their purchasing habits online, seeking convenience and a wider selection of products.
- **Mobile Commerce:** The proliferation of smartphones and tablets has made mobile shopping more accessible than ever. Consumers expect seamless mobile experiences.
- **Demand for Personalized Experiences:** Customers increasingly expect businesses to understand their preferences and offer tailored product recommendations and marketing messages.

## Competitive Landscape

The e-commerce market is highly competitive. To succeed, Acme, Inc. must differentiate itself. This can be achieved by offering superior customer experiences, streamlined operations, and unique product offerings. PrestaShop integration will enable improved efficiency and personalized customer interactions.

## E-commerce Market Trends 2020-2025

The e-commerce market has seen consistent growth in the past few years and is expected to continue growing.



# Proposed Solution Overview

Docupal Demo, LLC proposes a comprehensive PrestaShop integration solution designed to streamline ACME-1's e-commerce operations. Our approach focuses on creating a seamless flow of information between your existing systems and your PrestaShop store. This integration eliminates manual data entry, reduces errors, and improves overall efficiency.

## Key Features

The core of our solution includes several key features:

- **Automated Product Synchronization:** This feature automatically synchronizes product information between your systems and PrestaShop. Any changes to product details, such as descriptions, images, or pricing, will be reflected in PrestaShop in real-time.
- **Real-Time Inventory Updates:** We will implement real-time inventory updates to ensure accurate stock levels are displayed on your PrestaShop store. This reduces the risk of overselling and improves customer satisfaction.
- **Order Management:** Our integration streamlines order processing by automatically importing orders from PrestaShop into your existing systems. This allows you to manage orders efficiently and accurately.
- **Customer Data Integration:** Customer data collected in PrestaShop will be seamlessly integrated with your customer relationship management (CRM) system. This provides a unified view of your customers and enables personalized marketing efforts.

## Workflow and Operational Improvements

By implementing this integration, ACME-1 will experience significant improvements in workflows and operations. The elimination of manual data entry reduces the time and resources required to manage your online store. Automated order processing speeds up fulfillment and improves order accuracy. Real-time inventory updates prevent stockouts and improve inventory management.



## Unique Advantages

Docupal Demo, LLC offers unique advantages in PrestaShop integration. Our team has extensive experience in developing customized solutions tailored to specific business needs. We will work closely with ACME-1 to understand your unique requirements and develop an integration that meets your specific needs. Our expertise in PrestaShop ensures a smooth and efficient integration process. We are committed to providing ongoing support and maintenance to ensure the long-term success of your PrestaShop integration.

## Example: Pricing Table

Item Name	Price (USD)	Quantity	Total (USD)
Product A	25.00	100	2500.00
Product B	50.00	50	2500.00
Product C	75.00	25	1875.00
<b>Subtotal</b>			<b>6875.00</b>
Estimated Shipping			250.00
<b>Total (Estimated)</b>			<b>7125.00</b>

## Technical Requirements and Architecture

This section outlines the technical aspects of integrating Acme Inc.'s existing systems with PrestaShop. It covers the necessary prerequisites, API integrations, and the overall system architecture.

### Prerequisites

Before integration can begin, several prerequisites must be met. First, a working PrestaShop installation is required. Second, Acme Inc. must provide the necessary server infrastructure to support PrestaShop and related integrations. Finally, API access to Acme Inc.'s ERP system, payment gateways, and shipping provider accounts must be granted to Docupal Demo, LLC.





## API Integrations

The integration will involve several key APIs. Acme Inc.'s ERP system will be integrated to synchronize product data and order information with PrestaShop. Payment gateways like PayPal and Stripe will be integrated to process customer payments securely. Shipping providers such as UPS and FedEx will be integrated to calculate shipping costs and manage order fulfillment.

## Data Flow

Data will flow between Acme Inc.'s ERP system and PrestaShop in both directions. Product data, including descriptions, pricing, and inventory levels, will be pushed from the ERP system to PrestaShop. Order data, including customer information, order details, and payment status, will be transmitted from PrestaShop back to the ERP system for processing and fulfillment.

## System Architecture

The integration will follow a modular architecture. PrestaShop will serve as the central e-commerce platform, with API connections to the ERP system, payment gateways, and shipping providers. This design allows for flexibility and scalability as Acme Inc.'s business evolves.

# Implementation Plan and Timeline

## Project Implementation

This section outlines the plan to integrate ACME-1's systems with PrestaShop. Our approach is structured and milestone-driven. This ensures a smooth and efficient integration process.

## Project Phases and Milestones

The project is divided into distinct phases. Each has clear milestones and deliverables.

- 1. Project Kickoff:** This initial phase formally starts the project. It involves aligning stakeholders and setting expectations.



2. **Requirements Gathering:** We will work closely with ACME-1 to fully understand your needs. This includes current systems and desired PrestaShop functionality. The result will be a detailed requirements document. This guides the entire integration.
3. **System Design:** Based on gathered requirements, our team will design the integrated system architecture. This ensures seamless data flow. It also makes sure everything works well together.
4. **Development and Testing:** Our PrestaShop developers will build and configure the system. Rigorous testing ensures quality and stability. This phase includes unit tests and integration tests.
5. **Deployment:** The integrated system will be deployed to a live environment. We will minimize disruption to ACME-1's operations during this phase.
6. **Post-Implementation Support:** We will provide ongoing support and maintenance. This ensures the system continues to meet ACME-1's needs.

## Project Timeline

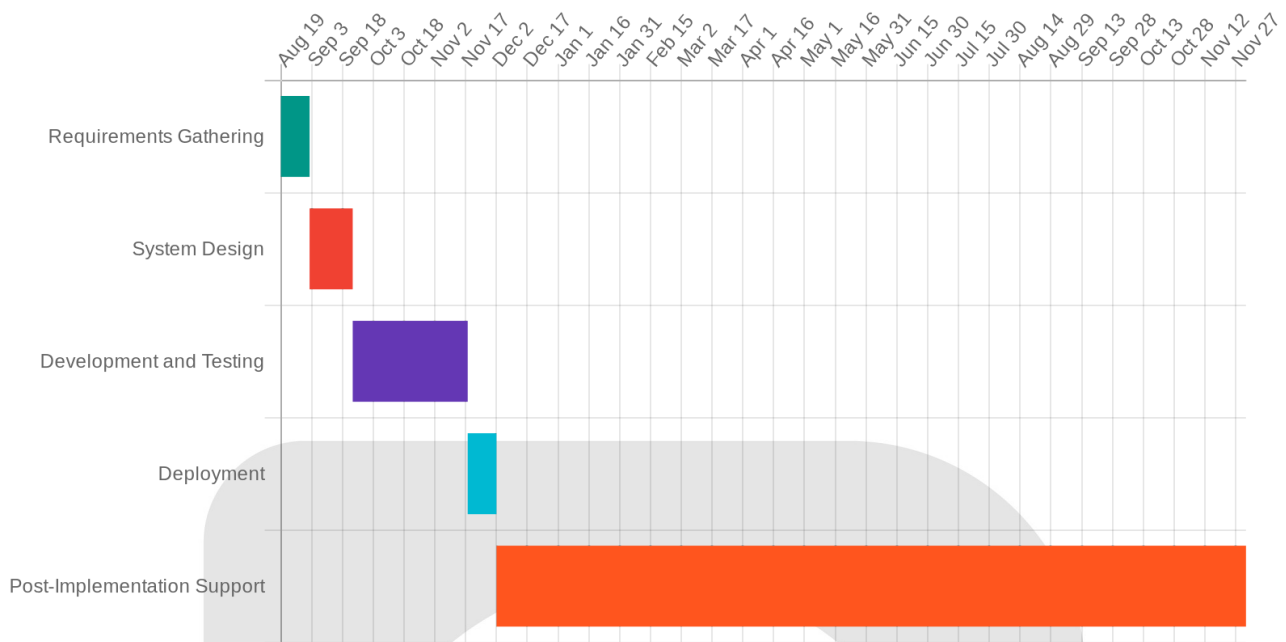
The estimated duration for each phase is below:

- **Requirements Gathering:** 2 weeks
- **System Design:** 3 weeks
- **Development and Testing:** 8 weeks
- **Deployment:** 2 weeks
- **Post-Implementation Support:** Ongoing

## Gantt Chart







## Resource Allocation

DocuPal Demo, LLC will provide a team of experts. These experts are needed throughout the project. This team includes:

- Project Manager
- PrestaShop Developers
- System Architects
- Database Administrators
- QA Testers

## Pricing and Budget Estimation

### Cost and Budget Overview

The following outlines the estimated costs for the PrestaShop integration project. These costs cover development, implementation, ongoing maintenance, and support. We've also included a contingency to address any unforeseen issues that may arise.

## One-Time Costs

The initial investment for this project is \$XX,XXX. This encompasses all activities required to get your PrestaShop integration up and running. The main components are development and implementation.

## Recurring Costs

To ensure the continued smooth operation of your PrestaShop integration, there's an annual recurring cost of \$X,XXX. This covers ongoing maintenance, technical support, and essential system updates.

## Cost Breakdown

Item	Cost
Development	\$XX,XXX
Implementation	Included in Development
Maintenance (Annual)	\$X,XXX
Support (Annual)	Included in Maintenance
<b>Total (Year 1)</b>	<b>\$XX,XXX + \$X,XXX</b>
<b>Total (Year 2 Onward)</b>	<b>\$X,XXX</b>

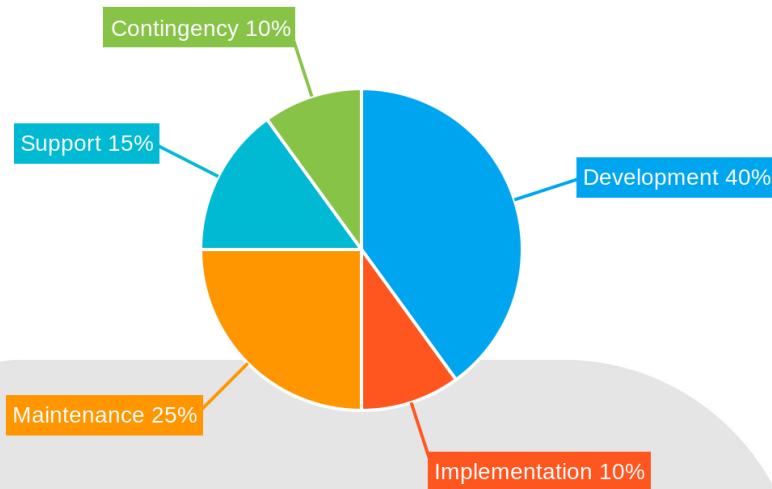
## Customization and Scale Considerations

Please note that the pricing above is based on our initial understanding of your requirements. Any significant customization or increased system scale will likely impact the final cost. This is due to the additional development effort and infrastructure that may be required. We will promptly communicate any anticipated cost adjustments and seek your approval before proceeding.

## Contingency

We have included a contingency fund equal to 10% of the one-time costs. This will allow us to address unforeseen issues that may arise during the implementation process.





## Support, Maintenance, and Training

Docupal Demo, LLC will provide comprehensive support, maintenance, and training to ensure the successful integration and ongoing operation of your PrestaShop system.

### Support

We offer tiered support levels to meet your specific needs. Standard support is available during business hours. For critical issues requiring immediate attention, we offer Premium support with 24/7 availability.

### Maintenance

Our maintenance plan includes regular updates and bug fixes. We will proactively address potential issues through scheduled maintenance. Emergency patches will be deployed as needed to resolve critical problems promptly.



## Training

A comprehensive training program will be provided for ACME-1's staff. This program will cover all aspects of the PrestaShop integration, enabling your team to effectively manage and utilize the new system. Training will be tailored to different user roles to maximize its impact and relevance.

# Risk Assessment and Mitigation Strategies

This section identifies potential risks associated with the PrestaShop integration project and outlines mitigation strategies to minimize their impact.

## Potential Risks

We have identified the following key risk areas:

- **Data Migration Challenges:** Moving data between systems can be complex. There's a risk of data loss, corruption, or incompatibility.
- **System Compatibility Issues:** Integrating different systems may lead to unforeseen conflicts or performance bottlenecks.
- **Security Vulnerabilities:** New integrations can introduce security gaps, potentially exposing sensitive data to unauthorized access.

## Mitigation Strategies

To address these risks, we will implement the following strategies:

- **Data Migration:** We will use established data migration tools and processes. This includes thorough data cleansing, validation, and backup procedures before, during, and after migration.
- **System Compatibility:** We will conduct comprehensive compatibility testing throughout the integration process. This includes testing with various browsers, devices, and operating systems. We'll also perform load testing to ensure the integrated system can handle anticipated traffic volumes.
- **Security:** We will implement robust security measures. This includes regular security audits, penetration testing, and vulnerability scanning. We will also follow security best practices for PrestaShop, including strong password



policies and timely security updates.

## Monitoring and Fallback

We will continuously monitor the integrated system for performance and security issues. In case of critical failures, we have established fallback plans, including data backups, redundant systems, and rollback procedures to restore the system to its previous state. Proactive issue resolution will be a priority throughout the project lifecycle.

## Conclusion and Next Steps

This PrestaShop integration is poised to streamline ACME-1's operations, enhance customer experience, and boost revenue growth. The proposed system architecture, combined with our phased implementation plan, minimizes risk while maximizing the return on investment. Our comprehensive support and maintenance package ensures the long-term success of the integrated platform.

## Immediate Actions

To move forward, we propose scheduling a kickoff meeting. This meeting will allow us to delve into the project scope, refine timelines, and address any initial questions. We can then finalize the project plan and begin the integration process.

