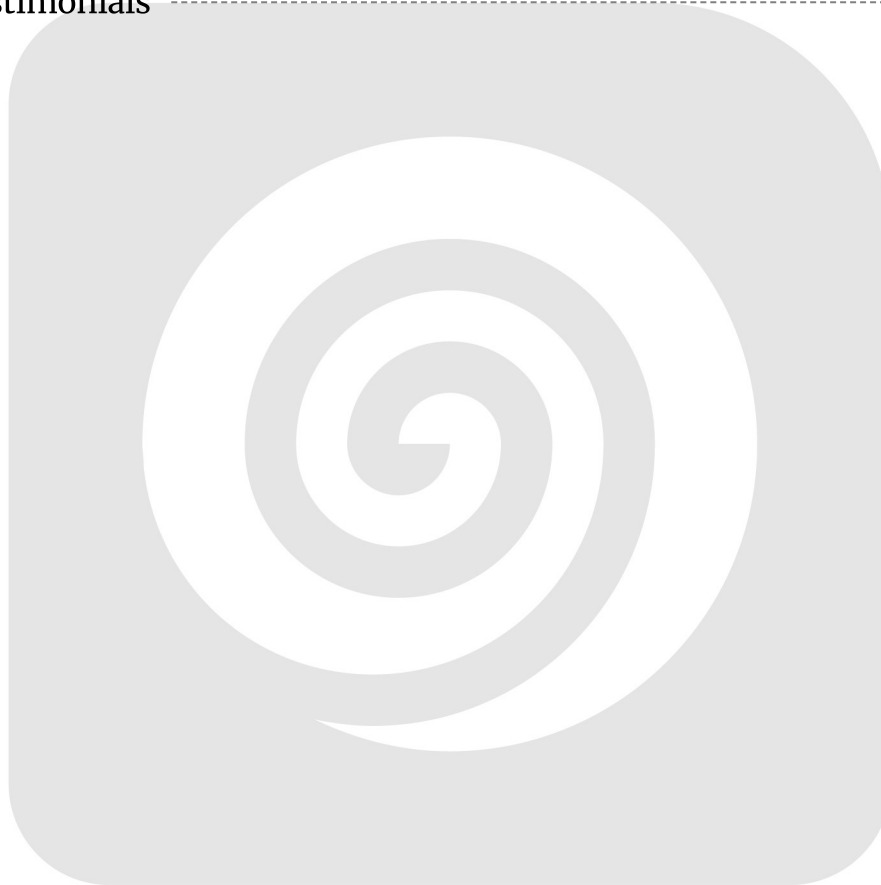


# Table of Contents

<b>Executive Summary</b>	<b>3</b>
Objectives and Benefits	3
Key Stakeholders	3
Project Scope	3
<b>Current Platform Assessment</b>	<b>4</b>
Technical Constraints	4
Feature Limitations	4
Business Impact	4
<b>Proposed PrestaShop Solution</b>	<b>5</b>
PrestaShop Platform Overview	5
Key Benefits	5
Customization and Modules	6
Scalability and Integrations	6
Scalability Features	7
Integration Capabilities	7
<b>Migration Strategy and Approach</b>	<b>7</b>
Phased Migration Plan	7
Data Migration and SEO Preservation	8
Testing and Validation	8
Timeline and Milestones	9
<b>Project Timeline and Milestones</b>	<b>9</b>
Project Schedule	10
Milestones	10
Critical Path and Risk Mitigation	11
<b>Cost Estimation and Budget</b>	<b>11</b>
Direct Costs	12
Indirect Costs	12
Budget Contingencies	12
Cost Summary	12
Return on Investment (ROI)	13
<b>Risk Assessment and Mitigation</b>	<b>13</b>
Technical Risks	13
Operational Risks	14



Contingency Plans .....	14
<b>Post-Migration Support and Maintenance .....</b>	<b>14</b>
Ongoing Technical Support .....	14
Security Updates and Performance Monitoring .....	15
Training Resources .....	15
Service Level Agreements (SLAs) .....	15
<b>Case Studies and Portfolio .....</b>	<b>15</b>
Successful Migrations .....	16
Addressing Challenges .....	16
Client Testimonials .....	16



# Executive Summary

This proposal outlines DocuPal Demo, LLC's plan to migrate Acme, Inc.'s e-commerce platform to PrestaShop. This migration is driven by ACME-1's need to increase sales, improve customer experience, and reduce operational costs. Our solution offers enhanced functionality, greater scalability, streamlined operations, and increased conversion rates.

## Objectives and Benefits

The primary objective is to create a robust and efficient e-commerce platform for ACME-1 using PrestaShop. The migration will result in several key benefits. These include an improved user experience, leading to higher customer satisfaction and increased sales. The new platform's enhanced scalability will allow ACME-1 to handle future growth without performance issues. Streamlined operations will reduce administrative overhead.

## Key Stakeholders

Key stakeholders in this project include the ACME-1 CEO, Marketing Director, IT Manager, and E-commerce Manager. From DocuPal Demo, LLC, the Project Manager and Lead Developer will be directly involved. The success of this project relies on collaboration and communication between all parties.

## Project Scope

The scope of this project covers the complete migration of ACME-1's existing e-commerce data and functionality to a new PrestaShop installation. This includes data migration, theme customization, module installation, testing, and deployment. Post-launch support and maintenance are also included to ensure a smooth transition and ongoing performance.



# Current Platform Assessment

Acme, Inc.'s current e-commerce platform faces several challenges that impact business operations and growth potential. Our assessment identifies key areas needing improvement.

## Technical Constraints

The existing platform's outdated architecture presents significant technical constraints. Limited API integrations hinder the ability to connect with modern third-party services and tools. Performance bottlenecks result in slow loading times, negatively affecting user experience and contributing to cart abandonment. Security vulnerabilities pose a risk to sensitive customer data and overall business reputation.

## Feature Limitations

Several features are either lacking or outdated, limiting ACME-1's ability to compete effectively. The current platform lacks full mobile responsiveness, providing a suboptimal experience for mobile users. Advanced marketing tools for targeted campaigns and personalized customer experiences are missing. Modern payment gateway integrations are needed to offer customers a wider range of secure and convenient payment options.

## Business Impact

The current platform's limitations directly impact ACME-1's business performance. Slow loading times lead to increased cart abandonment rates and lost sales. Limited marketing capabilities hinder the effectiveness of marketing campaigns, resulting in lower conversion rates. The outdated design impacts brand perception, potentially deterring customers. Difficult and costly maintenance further strains resources.

The following chart compares the features of your current platform with those offered by PrestaShop:

This assessment highlights the need for a platform migration to address these limitations and unlock new growth opportunities for ACME-1.

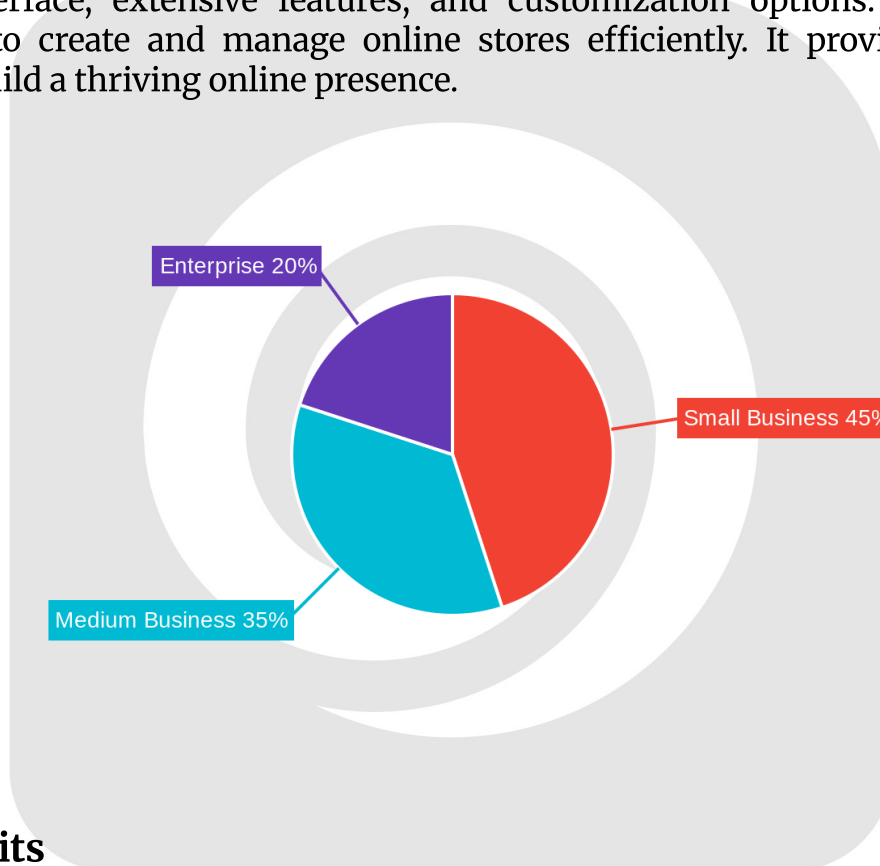


# Proposed PrestaShop Solution

We propose migrating ACME-1's e-commerce platform to PrestaShop to address current limitations and unlock new growth opportunities. PrestaShop offers a robust and flexible foundation for a successful online store.

## PrestaShop Platform Overview

PrestaShop is a leading open-source e-commerce platform known for its user-friendly interface, extensive features, and customization options. It empowers businesses to create and manage online stores efficiently. It provides the tools needed to build a thriving online presence.



## Key Benefits

- **Improved Mobile Experience:** PrestaShop's responsive design ensures the ACME-1 store will function seamlessly across all devices, including smartphones and tablets. This will cater to the increasing number of mobile shoppers.

- **Targeted Marketing Campaigns:** Built-in marketing features allow for the creation and execution of targeted campaigns, promotions, and discounts. This will improve customer engagement and drive sales.
- **Enhanced Brand Identity:** Customizable themes enable ACME-1 to create a unique and visually appealing online store that reflects its brand identity.
- **Extended Functionality:** The PrestaShop module marketplace offers a vast selection of modules to extend the platform's functionality. This allows ACME-1 to add features such as advanced search, product reviews, and social media integration.
- **Scalability:** PrestaShop's modular architecture supports horizontal scaling, ensuring the ACME-1 store can handle increasing traffic and sales volume. Cloud-based hosting options provide additional scalability as needed.
- **Integrations:** A robust API facilitates seamless integration with third-party services, such as CRM, ERP, and marketing automation platforms.

## Customization and Modules

To tailor PrestaShop to ACME-1's specific needs, we propose the following customizations and module implementations:

- **Custom Theme Development:** We will develop a custom PrestaShop theme that aligns with ACME-1's brand guidelines and provides a visually appealing and user-friendly shopping experience.
- **CRM and ERP Integration:** We will integrate PrestaShop with ACME-1's existing CRM and ERP systems to streamline data flow and improve business processes.
- **Advanced Search and Filtering:** We will implement advanced search and filtering modules to enable customers to quickly and easily find the products they are looking for.
- **Payment Gateway Integration:** We will integrate PrestaShop with ACME-1's preferred payment gateways to provide customers with a seamless and secure checkout experience.

## Scalability and Integrations

PrestaShop's architecture is designed for scalability and seamless integration with other systems.





## Scalability Features

- **Modular Design:** PrestaShop's modular design allows for easy addition or removal of features without affecting the core platform.
- **Cloud Hosting Compatibility:** PrestaShop is compatible with various cloud hosting providers, enabling ACME-1 to scale its infrastructure as needed.

## Integration Capabilities

- **REST API:** PrestaShop's REST API enables seamless integration with third-party applications, such as CRM, ERP, and marketing automation systems.
- **Webhooks:** Webhooks allow PrestaShop to send real-time notifications to other systems when specific events occur, such as order creation or customer registration.

# Migration Strategy and Approach

Our migration strategy focuses on a phased approach to minimize disruption and ensure a smooth transition to PrestaShop for ACME-1. This plan prioritizes data integrity, SEO preservation, and thorough testing at each stage.

## Phased Migration Plan

We will execute the migration in five distinct phases:

1. **Discovery and Planning (2 weeks):** This initial phase involves a detailed analysis of ACME-1's current e-commerce platform, including its architecture, data structure, and functionalities. We will define the project scope, identify key stakeholders, and establish clear communication channels. A comprehensive migration plan will be developed, outlining timelines, resource allocation, and risk mitigation strategies.
2. **Development and Configuration (8 weeks):** During this phase, we will set up the PrestaShop environment and configure it to meet ACME-1's specific requirements. This includes theme customization, module installation, and payment gateway integration. We will develop any custom modules or functionalities required to replicate the existing features of ACME-1's current platform.



3. **Data Migration and Testing (4 weeks):** This critical phase involves migrating data from ACME-1's existing platform to the new PrestaShop environment using secure ETL processes. We will migrate customer data, product catalogs, order history, and other relevant information. Rigorous testing will be conducted to ensure data integrity and accuracy.
4. **Deployment and Launch (2 weeks):** After successful testing, we will deploy the PrestaShop platform to a live environment. We will implement 301 redirects to preserve SEO rankings and ensure a seamless transition for customers. The launch will be carefully monitored to identify and address any potential issues.
5. **Post-Launch Support (4 weeks):** Following the launch, we will provide ongoing support to ACME-1 to address any questions or issues that may arise. This includes bug fixes, performance optimization, and user training.

## Data Migration and SEO Preservation

We understand the importance of preserving data integrity and SEO rankings during the migration process. Our data migration strategy includes:

- Secure ETL processes to ensure data is transferred accurately and securely.
- Data validation checks to identify and correct any inconsistencies or errors.
- Implementation of 301 redirects to maintain SEO rankings and prevent broken links.
- Preservation of URL structures to minimize the impact on search engine visibility.
- Migration of metadata, including product descriptions, titles, and keywords, to maintain SEO relevance.

## Testing and Validation

Thorough testing and validation are crucial to ensure a successful migration. Our testing procedures include:

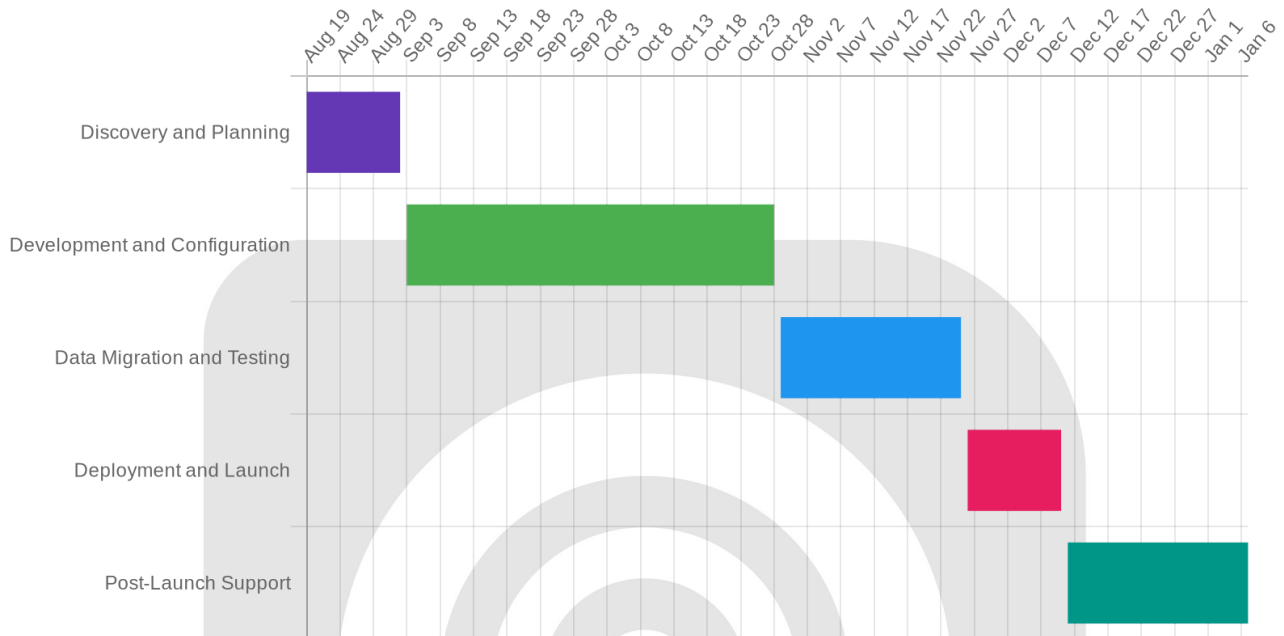
- Unit testing to verify the functionality of individual modules and components.
- Integration testing to ensure that different parts of the system work together seamlessly.
- User acceptance testing (UAT) to allow ACME-1's stakeholders to test the platform and provide feedback.
- Performance testing to assess the platform's speed and scalability.
- Security testing to identify and address any potential security vulnerabilities.





## Timeline and Milestones

The following Gantt chart outlines the proposed migration timeline and key milestones:



## Project Timeline and Milestones

This section details the proposed timeline for the PrestaShop migration project. The project is expected to take approximately [Number] weeks/months to complete, starting on [Start Date] and ending on [End Date]. The timeline includes key milestones, deliverables, and dependencies. DocuPal Demo, LLC will manage the project, with the DocuPal Demo, LLC Project Manager overseeing execution. ACME-1's IT Manager will handle infrastructure and access. The DocuPal Demo, LLC Lead Developer will manage development and data migration. ACME-1's E-commerce Manager will be responsible for UAT and content validation.

## Project Schedule

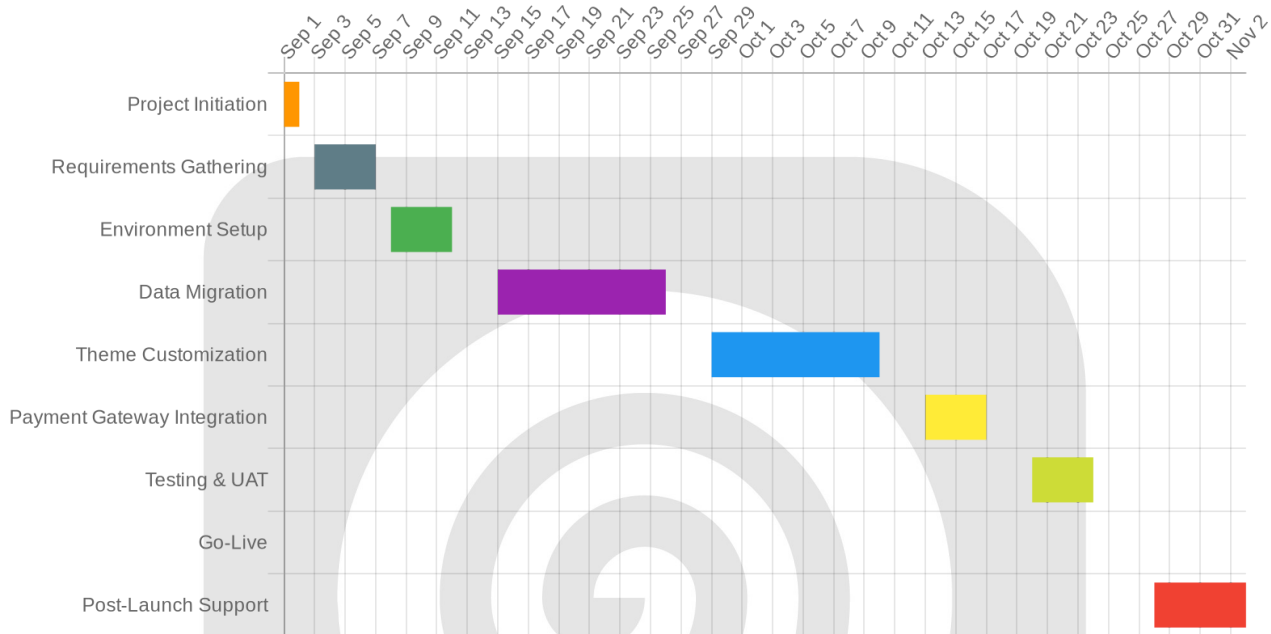
Task	Start Date	End Date	Duration (Days)	Responsible Party
Project Initiation	2025-09-01	2025-09-02	2	DocuPal Demo, LLC
Requirements Gathering	2025-09-03	2025-09-07	5	DocuPal Demo, LLC & ACME-1
Environment Setup	2025-09-08	2025-09-12	5	DocuPal Demo, LLC
Data Migration	2025-09-15	2025-09-26	10	DocuPal Demo, LLC
Theme Customization	2025-09-29	2025-10-10	10	DocuPal Demo, LLC
Payment Gateway Integration	2025-10-13	2025-10-17	5	DocuPal Demo, LLC
Testing & UAT	2025-10-20	2025-10-24	5	ACME-1
Go-Live	2025-10-27	2025-10-27	1	DocuPal Demo, LLC & ACME-1
Post-Launch Support	2025-10-28	2025-11-03	5	DocuPal Demo, LLC

## Milestones

- **Project Initiation:** Project officially kicks off.
- **Requirements Complete:** All requirements are documented and approved.
- **Development Environment Setup:** PrestaShop environment is set up and configured.
- **Data Migration Complete:** All data is migrated to the new PrestaShop environment.
- **Theme Customization Complete:** The PrestaShop theme is customized.
- **Payment Gateway Integration Complete:** Payment gateway integrated and tested.
- **UAT Sign-off:** ACME-1 approves the PrestaShop store.
- **Go-Live:** The new PrestaShop store is launched.

## Critical Path and Risk Mitigation

Critical path tasks include data migration, theme customization, payment gateway integration, and UAT. To mitigate potential delays, we will use proactive risk management, buffer time, an experienced project team, clear communication, and daily stand-up meetings.



## Cost Estimation and Budget

This section details the costs associated with migrating ACME-1's e-commerce platform to PrestaShop. DocuPal Demo, LLC has carefully estimated all expenses to provide a clear understanding of the investment required. Our cost estimations cover direct and indirect costs, ensuring transparency.

### Direct Costs

Direct costs are those directly attributable to the migration project. These include:

- **Development:** \$50,000. This covers the cost of custom module development, theme integration, data migration, and platform configuration.
- **Hosting:** \$10,000. This includes server setup, maintenance, and ongoing hosting fees for the PrestaShop environment.

- **Modules:** \$5,000. This allocates budget for purchasing any necessary PrestaShop modules or extensions to enhance functionality.

## Indirect Costs

Indirect costs are expenses that support the migration but aren't directly tied to specific tasks.

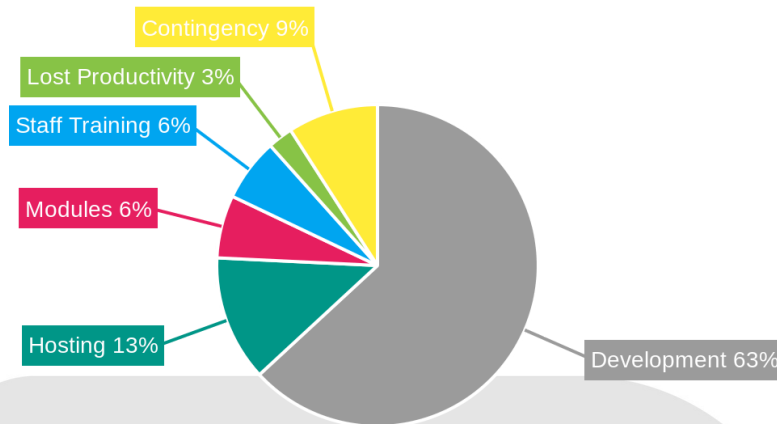
- **Staff Training:** \$5,000. This covers training ACME-1 staff on how to use and manage the new PrestaShop platform.
- **Lost Productivity:** \$2,000. This accounts for the estimated loss in productivity during the migration period as staff adapt to the new system.

## Budget Contingencies

We have included a 10% contingency (\$7,200) to address any unforeseen expenses or challenges that may arise during the migration process. This ensures the project stays on track and within budget. Resource availability planning and risk mitigation strategies are also in place to minimize potential disruptions.

## Cost Summary

Cost Category	Amount (USD)
Development	\$50,000
Hosting	\$10,000
Modules	\$5,000
Staff Training	\$5,000
Lost Productivity	\$2,000
Contingency (10%)	\$7,200
<b>Total</b>	<b>\$79,200</b>



## Return on Investment (ROI)

DocuPal Demo, LLC anticipates a strong return on investment for ACME-1 within 12 months of the PrestaShop migration. This ROI will be achieved through increased sales resulting from improved platform performance and enhanced user experience, as well as reduced operational costs due to PrestaShop's efficient architecture. A detailed financial model illustrating the projected ROI is available separately.

## Risk Assessment and Mitigation

Migrating ACME-1's e-commerce platform to PrestaShop involves inherent risks. DocuPal Demo, LLC will actively manage these risks to ensure a smooth and successful transition.

### Technical Risks

Potential technical risks include data migration errors, integration failures with existing systems, and the introduction of new security vulnerabilities. To mitigate data loss, we will implement a comprehensive data backup and recovery plan before any migration activities begin. A staging environment mirroring the production environment will be used for thorough testing of all functionalities and

integrations. This testing phase will identify and resolve potential issues before deployment. We will also conduct security audits to identify and address any vulnerabilities, ensuring the PrestaShop environment meets required security standards.

## Operational Risks

Operational risks primarily consist of potential downtime during the migration process, challenges with user adoption of the new platform, and a possible lack of internal expertise to manage the PrestaShop environment post-migration. To minimize downtime, we will employ strategies such as phased rollouts and optimized deployment procedures. A detailed rollback plan will be in place should critical issues arise during deployment. User adoption will be supported through comprehensive training programs and readily available documentation. DocuPal Demo, LLC will also provide ongoing support and knowledge transfer to ACME-1's team to build internal expertise.

## Contingency Plans

DocuPal Demo, LLC has established contingency plans to address unforeseen issues. These include data recovery procedures to restore data from backups, a rollback plan to revert to the previous system if necessary, and a communication plan to keep all stakeholders informed. A dedicated support team will be available throughout the migration process to provide immediate assistance and resolve any problems.

# Post-Migration Support and Maintenance

DocuPal Demo, LLC will provide comprehensive support and maintenance services after the PrestaShop migration to ensure a smooth transition and optimal performance for ACME-1. Our support structure includes several key components.

## Ongoing Technical Support

We offer continuous technical support to address any issues that may arise post-launch. This includes troubleshooting, bug fixes, and assistance with platform functionalities. Our team will be readily available to resolve technical challenges efficiently.





## Security Updates and Performance Monitoring

Security is a top priority. We will provide regular security updates to protect ACME-1's PrestaShop store from potential threats. We will also monitor the platform's performance, identifying and resolving any bottlenecks to ensure optimal speed and reliability.

## Training Resources

To empower ACME-1's staff, we will provide a range of training resources. These include on-site training sessions for hands-on learning, online documentation for quick reference, and video tutorials for visual guidance. We will also implement a train-the-trainer approach to facilitate knowledge sharing within ACME-1.

## Service Level Agreements (SLAs)

We will establish clear Service Level Agreements (SLAs) to define the scope and quality of our support services. These SLAs will cover response times for support requests, resolution times for reported issues, and an uptime guarantee to ensure continuous availability of the PrestaShop store. Escalation procedures will be clearly defined to address critical issues promptly. Our goal is to provide reliable and responsive support that meets ACME-1's needs.

## Case Studies and Portfolio

DocuPal Demo, LLC has a proven track record of successfully migrating e-commerce platforms to PrestaShop. We've helped businesses like yours thrive with enhanced online stores. Our experience spans various industries, including retail and fashion. We focus on delivering measurable results for our clients.

## Successful Migrations

We understand that migrating your e-commerce platform is a significant undertaking. You can rest assured that we've refined our approach through numerous successful projects. We're ready to put that experience to work for ACME-1.



- **Retail Client:** We migrated a retail client from a legacy platform to PrestaShop. This resulted in a 20% increase in sales. The improved user experience also reduced cart abandonment by 15%.
- **Fashion Client:** We helped a fashion retailer enhance their online presence with a PrestaShop migration. They saw a 10% improvement in customer satisfaction scores after the migration.

## Addressing Challenges

Every migration presents unique challenges. Our team is skilled at proactively identifying and addressing potential roadblocks. We prioritize clear communication and flexible project management. Our experienced technical team employs robust testing strategies to ensure a smooth transition. We are ready to solve any issues that arise quickly and efficiently.

## Client Testimonials

*"DocuPal Demo, LLC made our PrestaShop migration seamless. Their team was professional and responsive. We saw immediate improvements in our online store's performance."* – Retail Client

*"We were impressed with DocuPal Demo, LLC's attention to detail and commitment to our project. The migration was completed on time and within budget."* – Fashion Client

