

Table of Contents

Executive Summary	3
Project Goals and Benefits	3
Timeline and Approach	3
Market Analysis and Opportunity	4
E-commerce Market Overview	4
Market Growth Projections	4
OpenCart's Role	4
Key Benefits of OpenCart	4
Opportunities for ACME-1	5
Technical Integration Approach	5
OpenCart Modules and APIs	5
Customization and Scalability	6
System Architecture Diagram	6
Features and Functionalities	6
Payment Gateway Integration	6
Shipping Method Integration	7
Inventory Synchronization	7
User Experience (UX) and User Interface (UI) Enhancements	7
Implementation Plan and Timeline	7
Project Phases	8
Project Milestones and Deadlines	8
Project Schedule	8
Testing and Quality Assurance	9
Testing Strategy	9
Bug Tracking and Resolution	10
Performance Monitoring	10
Support and Maintenance	10
Support Levels	10
Maintenance and Updates	10
Service Level Agreements (SLAs)	11
About Us	11
About DocuPal Demo, LLC	11
Our Expertise	11



What Sets Us Apart	11
Relevant Experience	12
Cost and Pricing	12
Cost Components	12
Payment Schedule	12
Optional Add-ons	12



Executive Summary

This OpenCart Integration Proposal outlines Docupal Demo, LLC's plan to integrate and optimize Acme, Inc.'s online sales operations. Our goal is to streamline ACME-1's e-commerce processes, enhance customer experience, and drive revenue growth.

Project Goals and Benefits

The primary objective of this integration is to create a seamless and efficient online sales platform for ACME-1. By implementing this OpenCart solution, ACME-1 will realize several key benefits:

- Increased sales through an improved online shopping experience.
- Reduced operational costs via streamlined processes and automation.
- Improved customer satisfaction with a user-friendly and efficient platform.
- Data-driven decision-making capabilities through comprehensive analytics.

Timeline and Approach

Docupal Demo, LLC will execute this integration in four phases:

1. **Discovery and Planning (2 weeks):** Requirements gathering and solution design.
2. **Development and Integration (6 weeks):** Building and integrating the OpenCart solution.
3. **Testing and Deployment (2 weeks):** Rigorous testing and smooth deployment.
4. **Support and Maintenance (Ongoing):** Continuous support and maintenance to ensure optimal performance.

This phased approach ensures a structured and well-managed integration process, minimizing risks and maximizing the benefits for ACME-1.

Market Analysis and Opportunity

ACME-1 operates in a dynamic e-commerce landscape. Understanding the market trends and opportunities is crucial for maximizing the return on investment from this OpenCart integration.



E-commerce Market Overview

The e-commerce market has experienced significant growth. This trend is expected to continue. Factors such as increasing internet penetration, mobile device usage, and changing consumer preferences drive this expansion. ACME-1 can leverage this growth by enhancing its online presence and customer experience through OpenCart.

Market Growth Projections

The e-commerce market is projected to maintain a strong growth trajectory. These projections highlight the potential for ACME-1 to expand its market share and increase revenue through a robust e-commerce platform.

OpenCart's Role

OpenCart is a powerful e-commerce platform that provides a range of features and benefits. It allows businesses to create and manage online stores efficiently. Its flexibility and scalability make it an ideal choice for ACME-1 as it looks to grow its online business.

Key Benefits of OpenCart

- **Customization:** OpenCart's modular design enables extensive customization. It allows ACME-1 to tailor the platform to its specific needs.
- **Scalability:** OpenCart can handle a large number of products and transactions. It supports ACME-1's growth without performance issues.
- **Extensibility:** A wide range of extensions and plugins are available. It expands OpenCart's functionality and integrates with other systems.

Opportunities for ACME-1

By integrating OpenCart, ACME-1 can capitalize on several key opportunities:

- **Enhanced Customer Experience:** A user-friendly and feature-rich online store can improve customer satisfaction and loyalty.
- **Increased Sales:** By reaching a wider audience and offering a seamless shopping experience, ACME-1 can drive sales growth.



- **Improved Efficiency:** Automating processes such as inventory management and order fulfillment can reduce costs and improve operational efficiency.
- **Data-Driven Insights:** OpenCart provides valuable data on customer behavior and sales trends. It helps ACME-1 make informed business decisions.

Technical Integration Approach

Our technical integration approach focuses on a modular and scalable design. We will leverage OpenCart's built-in features, APIs, and extension system to integrate ACME-1's systems. This strategy ensures minimal disruption to existing operations and allows for future growth.

OpenCart Modules and APIs

We will integrate several key OpenCart modules to enhance ACME-1's e-commerce capabilities. These include:

- **Payment Gateways:** Integration with popular payment gateways like PayPal and Stripe will provide secure and convenient payment options for customers.
- **Shipping Modules:** We will integrate shipping modules such as UPS and FedEx to automate shipping calculations and tracking.
- **Marketing Automation Tools:** Integration with marketing automation platforms such as Mailchimp will streamline marketing efforts and improve customer engagement.

These integrations will be achieved using OpenCart's API, REST APIs for third-party services, and custom connectors where necessary.

Customization and Scalability

Customization will be handled through OpenCart's extension system and custom module development. This approach ensures that ACME-1's specific business requirements are met while maintaining the integrity of the core OpenCart system.

Scalability will be addressed through optimized database design and server infrastructure. We will implement caching mechanisms and load balancing to ensure that the system can handle increasing traffic and transaction volumes.



System Architecture Diagram

```
graph LR
  A[Customer] --> B[OpenCart Frontend]
  B --> C[OpenCart Core]
  C --> D[Payment Gateway (e.g., PayPal, Stripe)]
  C --> E[Shipping Module (e.g., UPS, FedEx)]
  C --> F[Marketing Automation (e.g., Mailchimp)]
  C --> G[Database]
  B --> H[ACME-1 Internal Systems]
  H --> G
  style A fill:#f9f,stroke:#333,stroke-width:2px
  style B fill:#ccf,stroke:#333,stroke-width:2px
  style C fill:#ccf,stroke:#333,stroke-width:2px
  style D fill:#f9f,stroke:#333,stroke-width:2px
  style E fill:#f9f,stroke:#333,stroke-width:2px
  style F fill:#f9f,stroke:#333,stroke-width:2px
  style G fill:#f9f,stroke:#333,stroke-width:2px
  style H fill:#f9f,stroke:#333,stroke-width:2px
```

This diagram illustrates the flow of data between the customer, OpenCart frontend, OpenCart core, integrated modules, database, and ACME-1's internal systems.

Features and Functionalities

The OpenCart integration will deliver a robust e-commerce platform tailored to ACME-1's specific needs. This section details the key features and functionalities of the integrated system.

Payment Gateway Integration

We will integrate leading payment gateways to provide secure and convenient transaction options for ACME-1's customers. Supported payment methods include:

- PayPal: Seamless integration for quick and easy payments.
- Stripe: Comprehensive payment processing with support for various card types.

Shipping Method Integration

The integrated system will offer flexible shipping options through established carriers. This will allow ACME-1 to cater to diverse customer preferences and optimize shipping costs.

- UPS: Integration with UPS for real-time rates and label generation.
- FedEx: Integration with FedEx for comprehensive shipping solutions.

Inventory Synchronization

To ensure accurate stock levels and prevent overselling, we will implement real-time inventory synchronization between ACME-1's existing inventory management system and the OpenCart platform. This synchronization will be achieved through API integration, providing automated updates whenever inventory levels change.

User Experience (UX) and User Interface (UI) Enhancements

We will enhance the user experience on the OpenCart storefront to improve customer engagement and drive conversions. Key improvements include:

- **Improved Product Filtering:** Enhanced filtering options will allow customers to quickly find the products they need based on specific criteria such as price, brand, or features.
- **Enhanced Search Functionality:** Implementation of a more intelligent search engine to deliver more relevant search results.
- **Mobile-Responsive Design:** The OpenCart storefront will be fully responsive, providing an optimal viewing experience across all devices, including desktops, tablets, and smartphones.

Implementation Plan and Timeline

Our integration project will follow a structured approach. We will break it down into four major phases to ensure a smooth and successful implementation. These phases are: Discovery and Planning, Development and Integration, Testing and Deployment, and Support and Maintenance.

Project Phases

1. **Discovery and Planning:** This initial phase focuses on understanding ACME-1's specific needs. We will gather detailed requirements and define the project scope. A key deliverable of this phase is a comprehensive project plan. We will also develop risk assessment, mitigation strategies, and contingency plans.
2. **Development and Integration:** In this phase, our development team will build and integrate the OpenCart modules, APIs, and connectors. We will customize the solution to meet ACME-1's unique requirements. Scalability, payment gateway integration, shipping configurations, and inventory synchronization will be addressed.



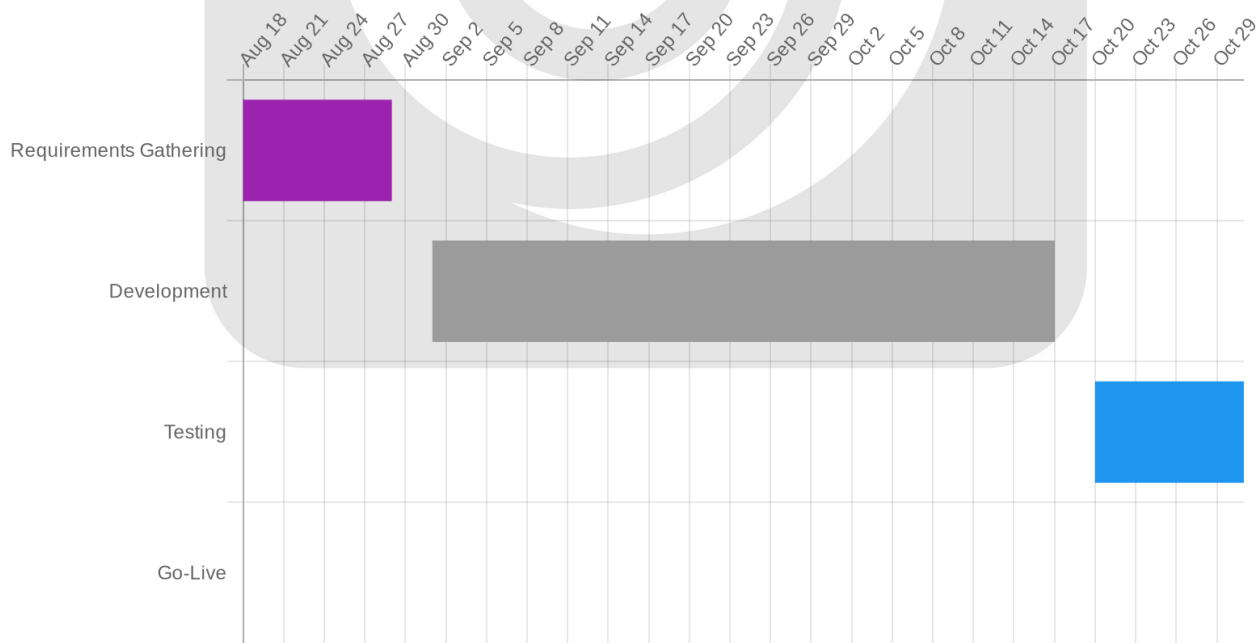
- 3. **Testing and Deployment:** Rigorous testing will be conducted to ensure the integrated system functions correctly and meets performance expectations. Bug tracking and resolution will be a priority. After successful testing, we will deploy the solution to ACME-1's environment.
- 4. **Support and Maintenance:** Post-deployment, we will provide ongoing support and maintenance services. This includes addressing any issues, providing updates, and ensuring the system continues to operate smoothly. We will define service level agreements (SLAs) to guarantee our commitment to ACME-1's success.

Project Milestones and Deadlines

We have established key milestones to track progress and ensure timely completion.

Milestone	Deadline
Requirements Gathering Complete	End of Week 2
Development Complete	End of Week 8
Testing Complete	End of Week 10
Go-Live	End of Week 10

Project Schedule



Testing and Quality Assurance

We will ensure the OpenCart integration meets ACME-1's requirements through rigorous testing and quality assurance processes. Our approach covers various testing levels and performance monitoring.

Testing Strategy

Our testing process includes these key stages:

- **Unit Testing:** We will test individual components and modules to verify they function correctly in isolation.
- **Integration Testing:** This will confirm that different modules and systems work together seamlessly after integration.
- **User Acceptance Testing (UAT):** ACME-1's team will participate in UAT to validate the integrated system meets your business needs and user expectations.
- **Performance Testing:** We will conduct performance testing to measure website traffic, conversion rates, page load times, and order processing times. This ensures the integrated system can handle expected loads efficiently.

Bug Tracking and Resolution

We will use Jira to track all identified bugs and issues. Our team will conduct regular bug review meetings to prioritize fixes based on severity. We are committed to resolving issues promptly to maintain project momentum.

Performance Monitoring

We will closely monitor key performance indicators (KPIs) to ensure optimal system performance. These KPIs include:

- Website traffic volume
- Conversion rates
- Page load times
- Order processing times

We will analyze these metrics to identify and address any performance bottlenecks.



Support and Maintenance

We are committed to providing ongoing support and maintenance for your OpenCart integration. This ensures your system remains stable, secure, and performs optimally.

Support Levels

We offer three support levels to meet your specific needs:

- **Standard Support:** Available during business hours.
- **Premium Support:** Provides 24/7 support coverage.
- **Dedicated Account Manager:** Includes a dedicated point of contact for personalized assistance.

Maintenance and Updates

We will perform monthly updates. These updates will include security patches and bug fixes. We will also release quarterly updates. These updates will include new features and enhancements to the integration.

Service Level Agreements (SLAs)

Our SLAs guarantee a high level of service reliability and responsiveness:

- **Uptime Guarantee:** We guarantee 99.9% uptime for the integrated system.
- **Response Time SLAs:** We will respond to support requests within defined timeframes, depending on the support level.
- **Resolution Time SLAs:** We will resolve critical issues within specified timeframes to minimize disruption.



About Us

About DocuPal Demo, LLC

DocuPal Demo, LLC, located at 23 Main St, Anytown, CA 90210, United States, specializes in providing tailored e-commerce integration solutions. Our base currency is USD. We focus on helping businesses like ACME-1 thrive in the digital marketplace.

Our Expertise

We offer comprehensive OpenCart integration services. Our team possesses deep expertise in OpenCart development. This includes module customization, API integration, and connector configuration. We ensure seamless data synchronization across all your business systems.

What Sets Us Apart

DocuPal Demo, LLC differentiates itself through a strong commitment to customer satisfaction. We boast a proven track record of successful e-commerce integrations across diverse industries. Our focus is on delivering solutions that meet your specific business needs. We prioritize clear communication and collaborative partnerships.

Relevant Experience

We have successfully completed numerous e-commerce integrations. These projects span various industries and business sizes. Our experience ensures a smooth and efficient integration process for ACME-1.

Cost and Pricing

This section details the costs associated with the OpenCart integration project for ACME-1. It outlines the pricing model, payment schedule, and potential add-ons.



Cost Components

The total cost comprises three primary components: development, licensing, and maintenance. Development costs cover the design, coding, and testing of the integration. Licensing fees cover the cost of any third-party software or modules required for the integration. Ongoing maintenance ensures the continued stability and performance of the integrated system. Development costs are fixed at \$X. Licensing fees are \$Y. Monthly maintenance is \$Z.

Payment Schedule

We propose a payment schedule that aligns with the project milestones. An initial payment of 30% is due upfront. This covers initial setup and planning. A second payment of 40% is due upon completion of the development phase. The final 30% is due upon successful deployment and testing of the integrated system.

Optional Add-ons

We offer several optional add-ons to enhance the functionality and performance of your OpenCart integration. These include Enhanced SEO optimization, Advanced analytics dashboards and Custom reporting. Pricing for these add-ons will be provided upon request.

Item	Price
Enhanced SEO Optimization	TBD
Advanced Analytics Dashboards	TBD
Custom Reporting	TBD

