

Table of Contents

Introduction	3
Proposal Overview	3
Addressing ACME-1's Needs	3
Docupal Demo, LLC: Expertise and Experience	3
Market Analysis	3
Target Market and Customer Segments	4
Competitive Landscape	4
Project Scope and Objectives	4
Scope of Work	4
BigCommerce Integration Points	5
Project Objectives	5
Technical Specifications	5
API Integration	6
Technology Stack	6
Security and Compliance	6
Platform Architecture	7
Development Timeline and Milestones	7
Project Timeline and Milestones	7
Project Phases	7
Key Milestones	7
Team and Expertise	8
Our Team	8
Cost Estimation and Pricing	9
Cost Breakdown	9
Pricing Model	9
Payment Terms	9
Contingency	10
Support and Maintenance	10
Support Packages	10
Updates and Bug Fixes	10
Service Level Agreement (SLA)	10
Portfolio and Case Studies	10
Similar Project Experience	11



Measurable Outcomes	11
Client References	11
Conclusion and Next Steps	11
Proposal Review	11
Next Steps	11
Follow-Up Meeting	11
Project Initiation	12
Risk Mitigation	12



Introduction

Proposal Overview

Docupal Demo, LLC is pleased to present this proposal to Acme, Inc (ACME-1) for the development of a custom BigCommerce application. Our goal is to provide ACME-1 with a solution that addresses critical document management challenges.

Addressing ACME-1's Needs

ACME-1 currently faces challenges with inefficient document workflows, limited BigCommerce integration, and difficulties in managing product-related documents. This application will streamline these processes, creating a more efficient and manageable system.

Docupal Demo, LLC: Expertise and Experience

Docupal Demo, LLC, based in the United States, brings extensive experience in BigCommerce app development. Our dedicated team of experts has a proven track record of successful app deployments. We are confident in our ability to deliver a high-quality solution that meets ACME-1's specific needs and enhances their BigCommerce operations.

Market Analysis

The BigCommerce app market is experiencing substantial growth, driven by the increasing demand for enhanced ecommerce functionalities. This growth is fueled by online retailers and small to medium-sized businesses seeking to optimize their operations and improve customer experiences. A key trend is the rising need for mobile-friendly applications, ensuring accessibility and convenience for users on various devices.



Target Market and Customer Segments

Our primary focus is on online retailers and SMBs, particularly those dealing with products requiring detailed documentation. These businesses need efficient solutions for managing and delivering product information to their customers. ACME-1 will address the pain points of businesses struggling with outdated, manual documentation processes.

Competitive Landscape

Currently, available BigCommerce apps offer basic document management features. However, they often lack the advanced automation and customization capabilities that ACME-1 will provide. This includes AI-powered search and organization, dynamic content generation, and seamless integration with other ecommerce platforms. Our competitive advantage lies in offering a comprehensive solution that goes beyond basic document storage and retrieval. We aim to provide intelligent tools that streamline documentation workflows and improve overall efficiency for businesses.

Project Scope and Objectives

This document outlines the scope and objectives for the BigCommerce application ("the App") to be developed by Docupal Demo, LLC for ACME-1. The App will provide enhanced document management capabilities directly within the ACME-1 BigCommerce store.

Scope of Work

Docupal Demo, LLC will be responsible for the complete development lifecycle, including design, development, testing, deployment, and initial support for the App. The core functionalities of the App will include:

- **Document Uploading:** Users will be able to upload various document types (e.g., PDFs, DOCs, images) related to their products.
- **Automated Tagging:** The App will automatically tag documents with relevant keywords based on content analysis.
- **Version Control:** A robust version control system will track changes to documents, allowing users to revert to previous versions as needed.



- **Secure Storage:** Documents will be stored securely, with appropriate access controls to protect sensitive information.
- **BigCommerce Integration:** Seamless integration with BigCommerce product listings, allowing users to easily associate documents with specific products.

BigCommerce Integration Points

The App will leverage the following BigCommerce APIs and features to ensure tight integration with ACME-1's existing store:

- **Product APIs:** To associate documents with products and retrieve product information.
- **Webhooks:** To receive real-time notifications about product updates and other relevant events.
- **Storefront API:** To potentially display documents directly on the storefront, if desired.

Project Objectives

The primary business objectives of this project are to:

- **Increase Sales:** By providing customers with access to detailed product documentation, the App aims to increase customer confidence and drive sales.
- **Reduce Operational Costs:** Automating document management tasks will reduce the time and resources required to manage product documentation.
- **Improve Customer Satisfaction:** By providing easy access to relevant information, the App will improve the overall customer experience.

The successful completion of this project will result in a fully functional BigCommerce application that meets ACME-1's document management needs and contributes to their overall business goals.

Technical Specifications

Our development approach centers on creating a robust and scalable BigCommerce application for ACME-1. We will leverage key BigCommerce APIs and a modern technology stack to deliver a high-performing solution.



API Integration

We will utilize the following BigCommerce APIs to ensure seamless integration with ACME-1's store:

- **Products API:** This API will enable efficient management of product catalogs, including creation, updates, and retrieval of product information.
- **Orders API:** We will use the Orders API to synchronize order data, process order updates, and manage fulfillment workflows.
- **Webhooks API:** Real-time data synchronization will be achieved through the Webhooks API, allowing the application to react instantly to events within the BigCommerce platform.

Technology Stack

The application will be built using a modern technology stack known for its performance and scalability:

- **React:** A JavaScript library will be used to create a dynamic and responsive user interface.
- **Node.js:** A JavaScript runtime environment will power the application's server-side logic.
- **MongoDB:** A NoSQL database will be used to store and manage application data, offering flexibility and scalability.
- **BigCommerce Stencil CLI:** We will use the BigCommerce Stencil CLI for local development and deployment, ensuring compatibility with the BigCommerce platform.

Security and Compliance

Security is paramount. We will adhere to industry best practices and comply with relevant standards:

- **PCI DSS Compliance:** We will ensure that all payment-related data is handled securely and in compliance with PCI DSS standards.
- **GDPR Compliance:** We will implement measures to protect customer data and comply with GDPR regulations, including data privacy and consent management.
- **Secure Data Encryption:** Data will be encrypted both in transit and at rest to protect sensitive information.



Platform Architecture

The application will employ a modular architecture, facilitating maintainability and scalability. The front end, built with React, will communicate with a Node.js backend. The backend will interact with the BigCommerce APIs and the MongoDB database. This architecture allows for independent scaling of each component based on demand.

Development Timeline and Milestones

Project Timeline and Milestones

This section details the development timeline, outlining key phases and milestones for the ACME-1 BigCommerce app. The project is divided into four phases to ensure a structured and risk-mitigated approach.

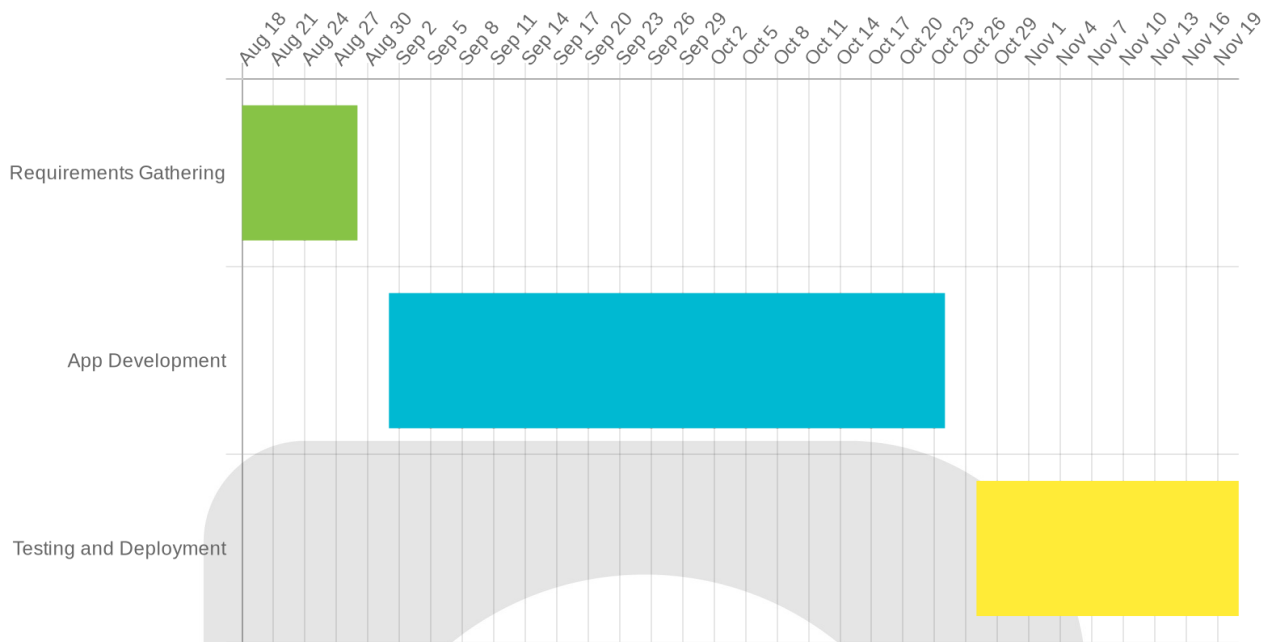
Project Phases

- 1. Requirements Gathering (2 weeks):** This initial phase focuses on a deep understanding of ACME-1's specific needs and desired functionalities for the app. This involves detailed discussions and documentation of all requirements.
- 2. App Development (8 weeks):** The core development phase involves building the application based on the gathered requirements. This includes coding, unit testing, and continuous integration.
- 3. Testing and Deployment (4 weeks):** Rigorous testing is conducted to ensure the app functions correctly and meets all requirements. Following successful testing, the app is deployed to the BigCommerce platform.

Key Milestones

Milestone	Duration	Start Date	End Date
Requirements Gathering	2 weeks	2025-08-18	2025-08-29
App Development	8 weeks	2025-09-01	2025-10-24
Testing and Deployment	4 weeks	2025-10-27	2025-11-21





Team and Expertise

Docupal Demo, LLC brings together a dedicated team with the skills and experience required for successful BigCommerce app development. Our team is based in the United States. We focus on clear communication, rigorous testing, and following industry best practices.

Our Team

- **John Smith, Project Manager:** John has 5 years of experience managing BigCommerce projects. He ensures projects are delivered on time and within budget.
- **Alice Johnson, Lead Developer:** Alice brings 7 years of experience developing BigCommerce apps. She is responsible for the technical design and implementation of your application.
- **Bob Williams, QA Engineer:** Bob ensures the quality of the app through thorough testing. His work guarantees a stable and reliable product for ACME-1.

Our team's combined expertise in ecommerce and BigCommerce development ensures we can deliver a solution tailored to ACME-1's specific needs.

Cost Estimation and Pricing

Docupal Demo, LLC provides ACME-1 with a transparent cost structure for the BigCommerce app development. This section details the investment required, covering cost components, payment schedules, and potential contingencies.

Cost Breakdown

The development cost includes both fixed and variable components. Fixed costs, totaling \$10,000, cover project setup, initial design, and foundational architecture. Variable costs, estimated at \$5,000, account for development, testing, and iterative improvements. The total estimated development cost is \$15,000.

Pricing Model

Our pricing is structured to provide ACME-1 with a clear understanding of where your investment is allocated. We operate on a fixed-bid approach for each milestone, ensuring predictability and accountability throughout the project.

Payment Terms

We offer flexible payment options through a phased payment structure tied to key project milestones. An initial payment will be required upon signing the agreement. Subsequent payments will be triggered by the successful completion of pre-defined milestones, ensuring alignment with project progress and ACME-1's satisfaction. Specific milestones and associated payment amounts will be detailed in the project agreement.

Contingency

A contingency of 10% of the total project budget (\$1,500) is included to address unforeseen challenges or minor scope adjustments that may arise during development. These funds will be used only upon ACME-1's approval and with full transparency.



Support and Maintenance

Docupal Demo, LLC provides comprehensive support and maintenance services to ensure the ongoing success of your BigCommerce app. We offer a range of support packages tailored to meet your specific needs.

Support Packages

We offer three support packages: Basic, Standard, and Premium. Each package provides different levels of support to address varying needs. Details about each package will be provided separately.

Updates and Bug Fixes

Updates and bug fixes will be managed through our dedicated support portal. We will provide regular maintenance releases to ensure optimal performance and address any identified issues.

Service Level Agreement (SLA)

Our SLA guarantees a response time of 2 hours for critical issues. This ensures that urgent problems are addressed quickly and efficiently, minimizing any potential disruption to your business.

Portfolio and Case Studies

We have a proven track record of developing successful BigCommerce applications. Our experience includes creating custom solutions that drive sales and improve operational efficiency.

Similar Project Experience

We developed a similar BigCommerce app for "Example Retailer". This project focused on streamlining inventory management and automating order processing. The app integrated seamlessly with their existing systems, providing real-time visibility into stock levels and order status.



Measurable Outcomes

The "Example Retailer" app delivered significant results. They experienced a 30% increase in sales and a 20% reduction in operational costs. These improvements were due to increased efficiency and better inventory control.

Client References

We are happy to provide client testimonials and references upon request. These will give you direct insights into our work quality and project management capabilities. We are confident our expertise can help ACME-1 achieve its business goals.

Conclusion and Next Steps

Proposal Review

We are confident that our proposed solution will provide ACME-1 with a robust and scalable BigCommerce application tailored to your specific needs. We encourage you to carefully review this proposal and consider the benefits of partnering with Docupal Demo, LLC.

Next Steps

Follow-Up Meeting

We recommend scheduling a follow-up meeting to discuss this proposal in detail. This meeting will provide an opportunity to address any questions or concerns you may have.

Project Initiation

To formally initiate the project, please sign and return this proposal along with the initial payment as outlined in the "Investment" section.



Risk Mitigation

We acknowledge the potential for scope creep and integration issues. To mitigate these risks, we will implement a strict change management process and conduct thorough testing, collaborating closely with BigCommerce support as needed.

