

# Table of Contents

<b>Introduction</b>	<b>3</b>
Proposal Overview	3
Migration Objectives	3
Client Background	3
<b>Current Website Assessment</b>	<b>3</b>
Content and Structure	4
Technical Considerations	4
<b>Migration Strategy and Approach</b>	<b>4</b>
Migration Methodology	5
Detailed Steps	5
Maintaining Integrity	5
Contingency Plans	6
Migration Timeline	6
<b>SEO Preservation Plan</b>	<b>7</b>
Pre-Migration SEO Audit	7
URL Structure and 301 Redirects	7
Sitemap Updates	7
Post-Migration Validation	7
<b>Project Timeline</b>	<b>8</b>
Project Phases	8
Gantt Chart	8
<b>Cost Estimation and Pricing</b>	<b>9</b>
Pricing Components	9
Detailed Cost Breakdown	9
Optional Services	10
Payment Terms	10
<b>Team and Expertise</b>	<b>10</b>
Key Personnel	11
<b>Post-Migration Support and Maintenance</b>	<b>11</b>
Initial Support Period	11
Extended Support Packages	11
Issue Tracking and Resolution	11
Training and Documentation	12



<b>Terms and Conditions</b>	12
Scope of Work	12
Payment Terms	12
Intellectual Property	12
Confidentiality	12
Termination	13
Limitation of Liability	13
Governing Law	13
Contractual Summary	13
<b>Conclusion and Next Steps</b>	13
Immediate Actions	14
Client Engagement	14



# Introduction

## Proposal Overview

Docupal Demo, LLC is pleased to present this proposal to Acme, Inc (ACME-1) for migrating your current Squarespace website to a more robust and scalable platform. This document outlines our approach to address the limitations you're experiencing with your current Squarespace Business plan and default templates.

## Migration Objectives

This migration is designed to overcome the hurdles that are currently hindering your growth and marketing efforts. Our primary goals include:

- Improving your website's loading speed.
- Providing greater design flexibility.
- Seamlessly integrating your website with your existing CRM system.

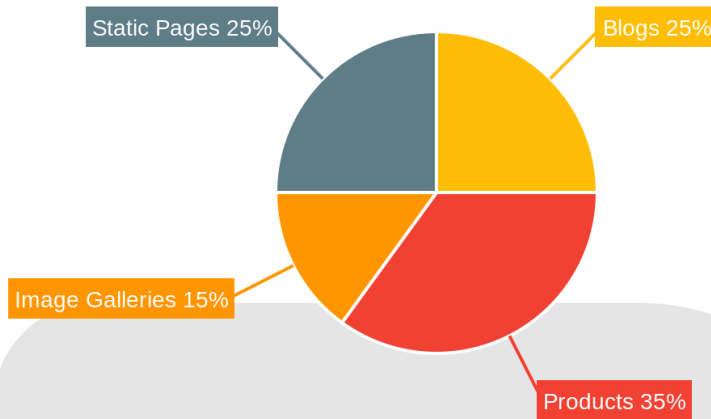
## Client Background

ACME-1, located at 3751 Illinois Avenue, Wilsonville, Oregon, is currently operating on a standard Squarespace Business plan. This migration aims to provide ACME-1 with a more tailored and effective online presence.

## Current Website Assessment

ACME-1's current website on Squarespace includes a mix of content types. We've identified blogs, e-commerce products, image galleries, and standard static pages. The website is built within the Squarespace framework.





## Content and Structure

The site's structure appears organized, but we will evaluate the current navigation and information architecture. We will assess how easily customers can find key information. A full content audit will determine the exact volume of each content type. This audit will inform the migration plan.

## Technical Considerations

The primary technical challenges stem from Squarespace's inherent limitations. Plugin support is restricted, limiting the ability to extend functionality with third-party tools. Design flexibility is also somewhat constrained by the platform's templates and built-in customization options. These constraints will be key factors during the migration planning and execution phases to ensure all functionality can be replicated or enhanced within the new environment.



# Migration Strategy and Approach

## Migration Methodology

Our migration strategy for ACME-1's Squarespace site involves a phased approach. This ensures a smooth transition with minimal disruption to your online presence. We will prioritize maintaining content and design integrity throughout the process. Our team will employ manual content export and import techniques. This allows for meticulous control over data transfer.

## Detailed Steps

1. **Planning and Assessment:** We begin with a thorough analysis of your existing Squarespace site. This includes content inventory, design elements, and functionality.
2. **Staging Environment Setup:** We create a staging environment on the new platform. This is a clone of your site where we perform the migration. It allows testing without affecting the live site.
3. **Content Migration:** We manually export content from Squarespace. Then, we import it into the new platform. Meticulous content mapping ensures all data is correctly placed and formatted.
4. **Design Implementation:** Our designers will develop a custom theme. It will replicate your current Squarespace design on the new platform. We will provide design mockups for your approval.
5. **Testing and Quality Assurance:** Rigorous testing is conducted on the staging environment. This includes functionality, responsiveness, and cross-browser compatibility.
6. **Deployment:** Once testing is complete and approved, we deploy the migrated site to the live environment. We will coordinate this with you to minimize downtime.
7. **Post-Migration Support:** We provide ongoing support after the migration. This includes monitoring performance and addressing any issues that may arise.



## Maintaining Integrity

- **Content:** We maintain content integrity through careful mapping. This guarantees accurate transfer and formatting.
- **Design:** Design mockups ensure the new site reflects the original Squarespace design.
- **Functionality:** Thorough testing verifies all features work as expected on the new platform.

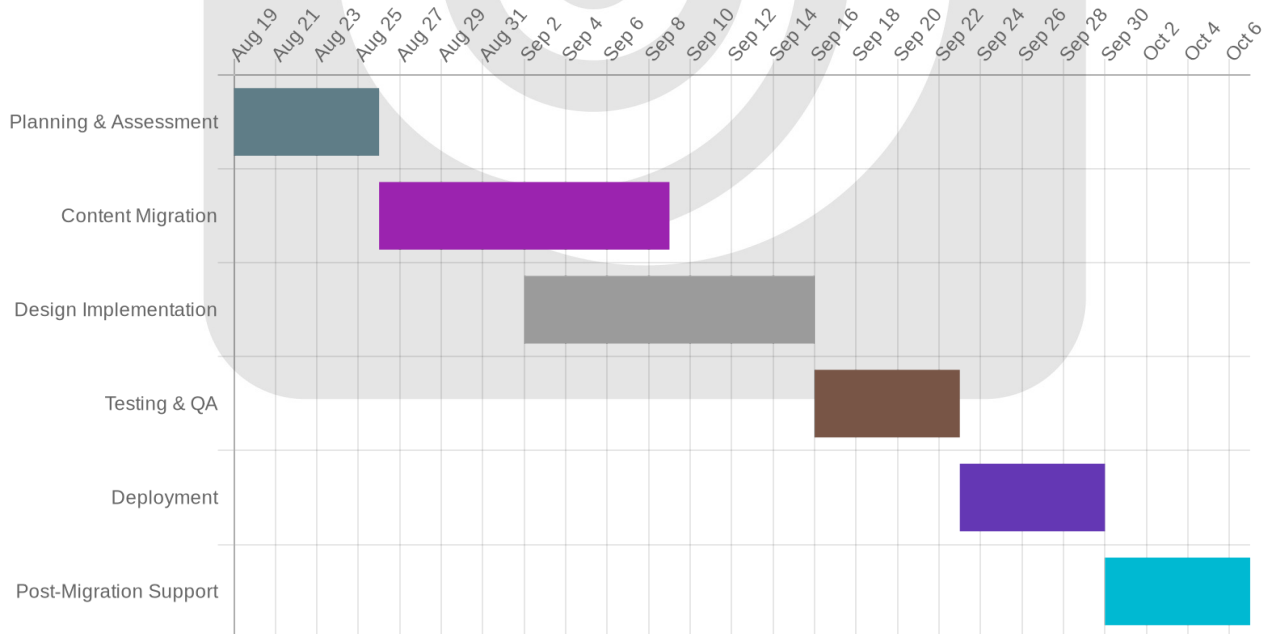
## Contingency Plans

We have several contingency plans to mitigate potential risks:

- **Server Downtime:** We use a staging environment for testing. This includes a rollback plan to revert to the original site if needed.
- **Data Loss:** Regular backups are performed throughout the migration.
- **Unforeseen Issues:** Our experienced team is equipped to handle unexpected challenges. This keeps the migration on track.

## Migration Timeline

The estimated migration timeline is illustrated below.



# SEO Preservation Plan

Maintaining your search engine optimization (SEO) performance throughout the Squarespace migration is a top priority. Our plan focuses on minimizing disruption and maximizing the carry-over of your existing search rankings. We achieve this through careful planning, execution, and validation.

## Pre-Migration SEO Audit

Before starting the migration, we perform a comprehensive SEO audit of your current Squarespace site. This assessment identifies your top-performing pages, keyword rankings, and existing SEO strengths and weaknesses. This information informs our migration strategy and ensures we preserve what's working well.

## URL Structure and 301 Redirects

A critical aspect of SEO preservation is maintaining URL structure as much as possible. When URL changes are unavoidable, we implement 301 redirects. These redirects permanently forward users and search engines from your old Squarespace URLs to the corresponding new URLs on the destination platform. This ensures that any link equity built up over time is transferred, preventing loss of search rankings and traffic.

## Sitemap Updates

After the migration is complete and all redirects are in place, we update your website's sitemap. This sitemap is then submitted to search engines like Google, allowing them to quickly crawl and index your updated site structure. This helps search engines understand the changes and maintain your site's visibility in search results.

## Post-Migration Validation

Following the migration, we conduct a post-migration SEO audit. This audit verifies that all redirects are functioning correctly, the sitemap has been updated, and your website is being crawled and indexed properly. We also monitor your keyword rankings and organic traffic to ensure a smooth transition and identify any potential issues early on.





# Project Timeline

We estimate the Squarespace migration for ACME-1 will take approximately 8 weeks, starting on 2025-08-19 and concluding on 2025-10-14. The project is divided into four key phases, each with a client review at its completion.

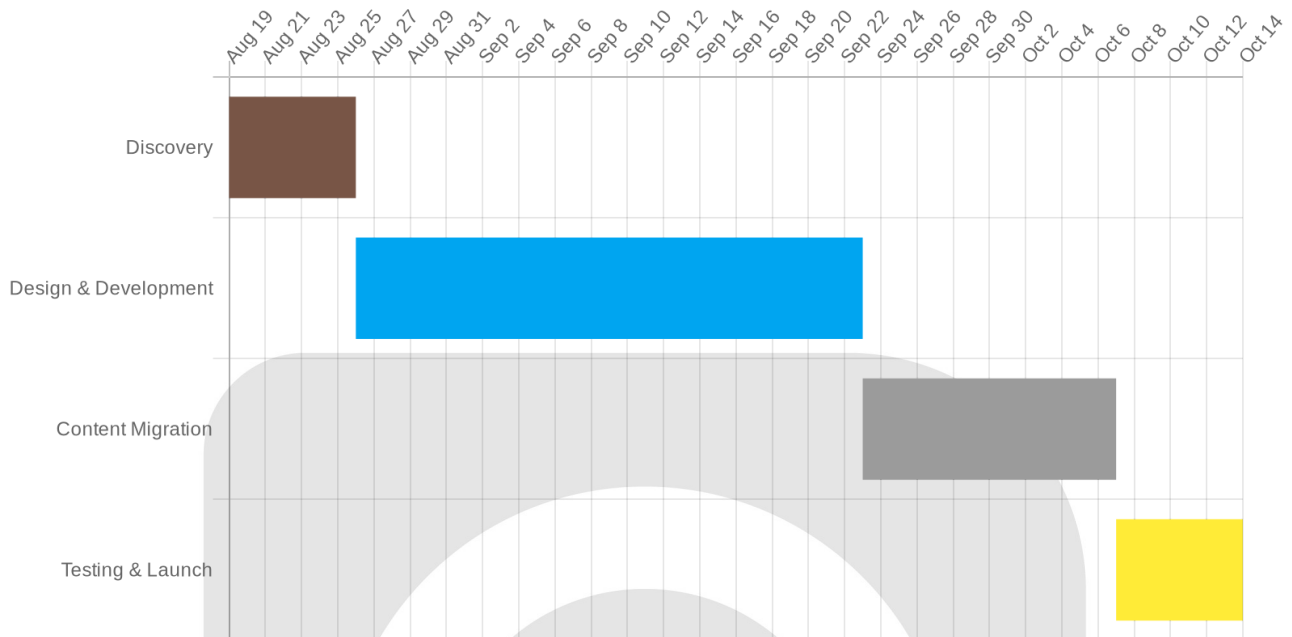
## Project Phases

1. **Discovery (1 week):** This initial phase involves a detailed analysis of your existing website, content, and specific requirements. We will define the scope and objectives of the migration. Client review will occur at the end of this week.
2. **Design & Development (4 weeks):** Based on the discovery phase, we will design and develop the new Squarespace website, ensuring it aligns with your brand and meets your functional needs. Client review will occur at the end of this phase.
3. **Content Migration (2 weeks):** We will migrate all existing content to the new Squarespace platform, ensuring accuracy and optimal presentation. Client review will occur at the end of this phase.
4. **Testing & Launch (1 week):** The final phase involves thorough testing of the new website to ensure functionality and performance. Upon successful testing, we will launch the new Squarespace website. Client review will occur at the end of this phase.





## Gantt Chart



## Cost Estimation and Pricing

Our proposed pricing structure reflects the scope of work required to migrate your website from Squarespace to the new platform. It covers key areas to ensure a smooth transition and enhanced online presence.

### Pricing Components

The total project cost is calculated based on these components:

- **Content Migration:** This includes transferring all existing content such as text, images, and videos.
- **Custom Design:** This covers the design and implementation of a visually appealing and user-friendly website.
- **Platform Setup:** This includes setting up the new platform, configuring necessary plugins, and ensuring optimal performance.
- **Project Management:** This covers the planning, coordination, and communication throughout the migration process.

## Detailed Cost Breakdown

Item	Price
Content Migration	[\$Amount]
Custom Design	[\$Amount]
Platform Setup	[\$Amount]
Project Management	[\$Amount]
<b>Total Project Cost</b>	<b>[\$Sum]</b>

**Note:** The amounts above are placeholders and will be replaced with actual figures based on ACME-1's specific requirements.

Our cost estimation includes allocations for labor, specialized tools, and a contingency buffer to address unforeseen challenges. Labor costs encompass the time spent by our skilled developers, designers, and project managers. We also factor in the expenses associated with software licenses and other necessary tools. The contingency fund, typically 10-15% of the total project cost, ensures we can handle unexpected complexities without compromising the project timeline or budget. This comprehensive approach allows us to deliver a high-quality migration while mitigating potential risks effectively.

## Optional Services

We also offer these optional services at an additional cost:

- **SEO Optimization Package:** Enhance your website's search engine visibility.
- **Ongoing Maintenance:** Regular updates and support to keep your website running smoothly. These services can be added to the project based on your specific needs.

## Payment Terms

We propose the following payment terms for this project:

- **50% Upfront:** This initial payment is required to start the project.
- **50% Upon Completion:** The remaining balance is due upon successful completion of the migration and your satisfaction.



## Team and Expertise

Docupal Demo, LLC provides a skilled team to ensure a seamless Squarespace migration. Our team's experience and qualifications are perfectly suited to handle your project efficiently.

### Key Personnel

**John Doe** will serve as the Project Manager. John has over 5 years of experience in project management, including successfully leading three Squarespace migrations. He is also a Certified Scrum Master.

**Jane Smith** will be the Lead Developer. Jane brings over 7 years of web development experience to the project. She has extensive experience with migrations similar to this one and is a Certified Web Developer.

Our team's combined expertise guarantees a smooth and effective migration process for ACME-1. We are committed to delivering excellent results.

## Post-Migration Support and Maintenance

We understand the importance of ongoing support after your Squarespace migration. Docupal Demo, LLC provides comprehensive post-migration support to ensure a smooth transition and continued success.

### Initial Support Period

We include 30 days of free support starting immediately after the website launch. This support covers any issues directly related to the migration process.

### Extended Support Packages

For longer-term assistance, we offer extended support packages tailored to your needs. These packages can include:

- Content updates and management assistance



- Technical support for website issues
- Website monitoring and performance optimization

Please contact us to discuss the best extended support package for ACME-1.

## Issue Tracking and Resolution

We use a Jira ticketing system to track and resolve all support requests efficiently. You will receive regular status updates on your tickets. This ensures transparency and accountability throughout the support process.

## Training and Documentation

To empower your team, we provide comprehensive documentation and training videos. These resources cover Squarespace content management and best practices. This will allow you to confidently manage your website after the migration.

# Terms and Conditions

This section outlines the terms and conditions governing the Squarespace migration project undertaken by DocuPal Demo, LLC ("DocuPal") for Acme, Inc ("ACME-1"). By proceeding with this project, ACME-1 agrees to be bound by these terms.

## Scope of Work

The specific services to be provided by DocuPal are detailed in the "Scope of Work" section of this proposal. Any changes to the scope must be mutually agreed upon in writing and may result in adjustments to the project timeline and cost.

## Payment Terms

ACME-1 will pay DocuPal according to the schedule outlined in the "Pricing and Payment" section. Late payments may be subject to interest charges. DocuPal reserves the right to suspend work if payments are not received on time.



## Intellectual Property

Upon full payment, ACME-1 will own the intellectual property rights to the migrated website content. DocuPal retains ownership of any proprietary tools or code developed during the migration process.

## Confidentiality

Both DocuPal and ACME-1 agree to hold each other's confidential information in strict confidence. This includes, but is not limited to, business data, customer information, and technical specifications. A separate Non-Disclosure Agreement (NDA) further governs the handling of confidential information. DocuPal employs secure data handling practices to protect ACME-1's data during the migration.

## Termination

Either party may terminate this agreement with written notice if the other party breaches these terms. Upon termination, ACME-1 will pay DocuPal for all work completed up to the termination date.

## Limitation of Liability

DocuPal's liability for any claims arising out of this agreement is limited to the total project cost. DocuPal is not liable for any indirect, incidental, or consequential damages.

## Governing Law

This agreement shall be governed by and construed in accordance with the laws of the State of California, United States.

## Contractual Summary

Key contractual terms include the defined scope of work, payment schedules, intellectual property ownership transfer to ACME-1 upon full payment, and termination clauses allowing either party to end the agreement with written notice. Confidentiality is maintained through an NDA and secure data handling. DocuPal's liability is limited to the total project cost.



# Conclusion and Next Steps

We believe that migrating your website to a new platform will unlock new possibilities for your online presence. Our team is ready to deliver a seamless transition, improved performance, and a website that better serves your business goals.

## Immediate Actions

To initiate the migration process, we propose scheduling an initial kickoff meeting. This meeting will allow us to:

- Introduce the project team.
- Review the project scope and timeline in detail.
- Address any initial questions or concerns.
- Establish clear communication channels.

## Client Engagement

Your active participation is crucial for a successful migration. We encourage your involvement in the following ways:

- Providing prompt feedback on deliverables.
- Participating in review sessions.
- Sharing insights and preferences regarding the new website design and functionality.

We are excited about the opportunity to partner with you on this project and look forward to a successful migration.

