

Table of Contents

Introduction	3
Project Overview	3
Background	3
Market Analysis	3
CMS Market Trends	3
Competitive Landscape	4
Market Opportunity	4
Technical Requirements	4
Core Ghost Features	5
API Integrations and Plugins	5
Hosting and Scalability	5
Security Requirements	5
Project Plan and Timeline	6
Project Phases	6
Project Timeline	6
Team and Resources	7
Project Team	7
Resources and Tools	7
Budget and Cost Estimates	8
Project Phase Costs	8
Detailed Cost Breakdown	8
Additional Costs	9
Change Orders	9
Deployment and Maintenance Strategy	9
Deployment	9
Hosting and Infrastructure	10
Updates and Backups	10
Ongoing Support and Maintenance	10
Risk Analysis and Mitigation	10
Technical Risks	10
Operational Risks	11
Market Risks	11
Conclusion and Next Steps	11



Approvals and Kickoff	11
Follow-Up	11



Introduction

DocuPal Demo, LLC presents this Ghost Development Proposal to Acme, Inc (ACME-1). This document outlines our plan to develop and deploy a modern, efficient content platform using Ghost. Our goal is to provide ACME-1 with a system that enhances its online presence.

Project Overview

This project focuses on creating a robust content management system tailored to ACME-1's specific needs. We will leverage Ghost's capabilities to build a platform that is both powerful and user-friendly.

Background

ACME-1 requires a contemporary content management solution to improve its digital footprint. Our proposed Ghost platform aims to meet this need by providing a flexible and scalable solution. This proposal details our approach to achieving this objective.

Market Analysis

The content management system (CMS) market is currently experiencing significant shifts. We see a growing demand for headless CMS solutions. Speed and search engine optimization (SEO) are increasingly important for content platforms. More businesses are also adopting membership and subscription models to monetize their content. These trends create both challenges and opportunities for Acme Inc.

CMS Market Trends

- **Headless CMS Growth:** Businesses want more flexibility in how they deliver content. Headless CMS solutions separate the content repository from the presentation layer. This allows content to be distributed across various channels, like websites, mobile apps, and IoT devices.



- **Focus on Speed and SEO:** Website performance directly impacts user experience and search engine rankings. CMS platforms that offer fast loading times and built-in SEO tools are highly valued.
- **Subscription and Membership Models:** Content creators are looking for ways to generate recurring revenue. CMS platforms that support membership programs and subscriptions are gaining popularity.

Competitive Landscape

Several major players compete in the CMS market. Each has its own strengths and weaknesses:

- **WordPress:** WordPress is the most popular CMS. It boasts a vast plugin ecosystem, offering extensive functionality. However, it can be complex to manage and may suffer from performance issues if not properly optimized.
- **Contentful:** Contentful offers a flexible API-first approach. This makes it a good choice for developers who need a highly customizable solution. It can be more expensive and require more technical expertise than other options.
- **Medium:** Medium is a simple and user-friendly platform focused on blogging. While easy to use, it offers limited customization and control compared to other CMS options.

Market Opportunity

This project directly addresses Acme Inc.'s need for a fast, SEO-optimized content platform. By leveraging Ghost, we can create a tailored solution that meets Acme Inc.'s specific requirements. Ghost offers a streamlined content creation experience and excellent performance. Its built-in SEO features will help Acme Inc. improve its search engine rankings and attract more organic traffic.

Technical Requirements

This section outlines the technical specifications for the Ghost content platform development and deployment for ACME-1. It covers the core features, integrations, hosting, scalability, and security requirements essential for a successful implementation.



Core Ghost Features

We will leverage Ghost's core functionalities, including its editor, membership capabilities, and SEO tools. The Ghost editor will enable content creators to efficiently produce and manage high-quality content. Membership features will support ACME-1 in building and engaging with its audience through subscriptions and gated content. Ghost's built-in SEO tools will be utilized to optimize content for search engines, improving organic visibility.

API Integrations and Plugins

To align with ACME-1's existing infrastructure, we will integrate the Ghost platform with ACME-1's CRM and email marketing platform. This integration will ensure seamless data flow between systems, enhancing marketing automation and customer relationship management. We will evaluate and implement necessary plugins to extend Ghost's functionality and meet ACME-1's specific requirements.

Hosting and Scalability

The Ghost platform will be hosted on a secure and scalable infrastructure. The hosting environment will be designed to accommodate ACME-1's current and future traffic needs. Scalability will be a key consideration, ensuring the platform can handle increased traffic and content volume without performance degradation. We will implement caching mechanisms and content delivery networks (CDNs) to optimize performance and reduce server load.

Security Requirements

Security is paramount. We will implement robust security measures to protect ACME-1's data and infrastructure. Regular security audits and updates will be performed to identify and address potential vulnerabilities. We will adhere to industry best practices for data encryption, access control, and intrusion detection. A web application firewall (WAF) will be deployed to protect against common web attacks. We will follow OWASP guidelines to secure the application.



Project Plan and Timeline

This section details the project's phases, deliverables, and schedule. The project will be completed in four key phases. We will track progress and communicate updates through weekly meetings and reports. We will also use project management software, such as Asana, to ensure transparency and efficiency.

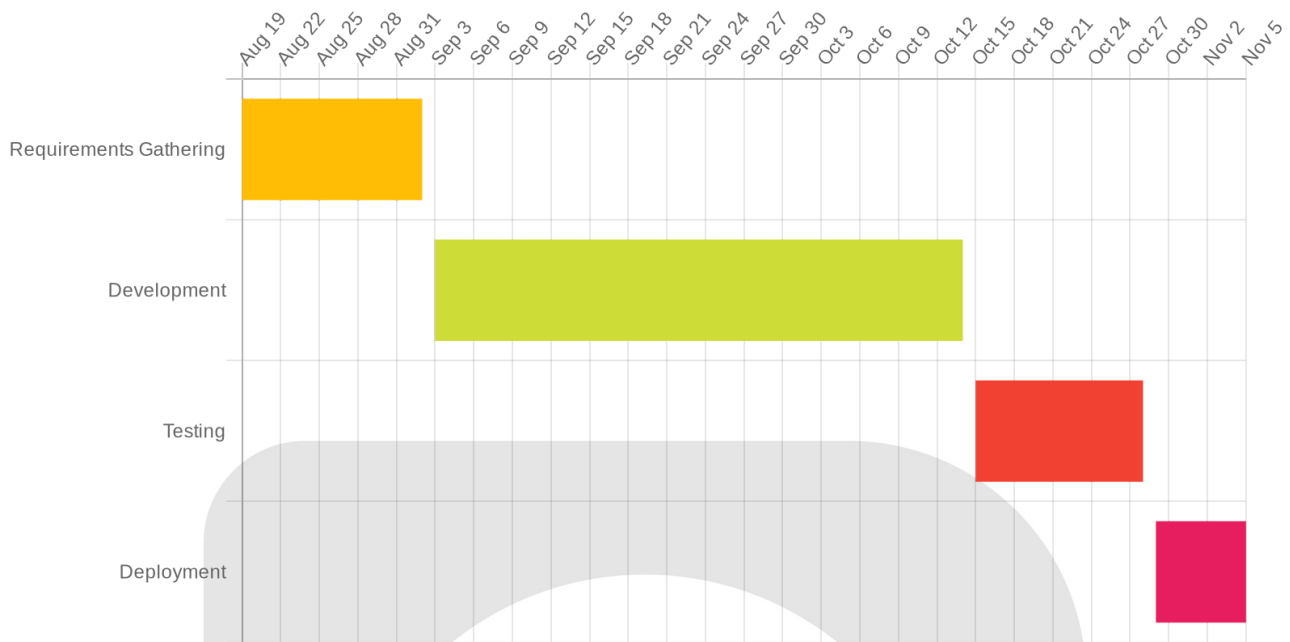
Project Phases

1. **Requirements Gathering:** This initial phase focuses on understanding ACME-1's specific needs and goals for the Ghost platform. We will work closely with your team to document detailed requirements and finalize the project scope. This phase is estimated to take **2 weeks**.
2. **Development:** Based on the approved requirements, our development team will build and configure the Ghost platform, including any custom themes, integrations, and functionalities. This phase is estimated to take **6 weeks**. *Note: This phase is dependent on the completion of the Requirements Gathering phase.*
3. **Testing:** After development, we will conduct thorough testing to ensure the platform meets all requirements and functions flawlessly. This includes functional testing, performance testing, and security testing. This phase is estimated to take **2 weeks**. *Note: This phase is dependent on the completion of the Development phase.*
4. **Deployment:** The final phase involves deploying the completed Ghost platform to the agreed-upon hosting environment. We will provide support and training to your team to ensure a smooth transition. This phase is estimated to take **1 week**.

Project Timeline

The following Gantt chart illustrates the project schedule, outlining key milestones and deadlines.





Team and Resources

Our team has the skills to make this project a success. We have a clear plan for how we will work together. We will also use the right tools to get the job done.

Project Team

- **Project Manager (Jane Doe):** Jane will oversee the entire project. She will make sure we stay on schedule and within budget. She is an expert in project management methodologies and has a track record of successful project delivery.
- **Lead Developer (John Smith):** John will lead the technical development of the Ghost platform. He is a skilled developer with expertise in Ghost CMS, theme customization, and integration with third-party services.
- **Content Strategist (Alice Brown):** Alice will be in charge of the content strategy. She will make sure your content is engaging and optimized for search engines. She has extensive experience in content creation, SEO, and audience engagement.

Resources and Tools

We will use the following resources and tools:

- **Ghost Pro Subscription:** This will provide a reliable and scalable hosting environment for your Ghost platform.
- **Specialized SEO Tools:** These tools will help us optimize your content for search engines and track your website's performance.
- **Collaboration and Communication:** We will have daily stand-up meetings to discuss progress and any roadblocks. We will also have weekly team meetings for more in-depth discussions. We will use shared communication channels like Slack for quick communication and updates. This ensures everyone stays informed and aligned.

Budget and Cost Estimates

This section details the estimated costs associated with the Ghost development project for ACME-1. The budget encompasses all phases, from initial setup to ongoing maintenance.

Project Phase Costs

The project is divided into four key phases. Each phase has a specific cost allocation, as outlined below:

- **Phase 1 (Planning & Setup):** \$5,000
- **Phase 2 (Theme Development & Customization):** \$15,000
- **Phase 3 (Content Migration & Integration):** \$3,000
- **Phase 4 (Testing & Deployment):** \$2,000

Detailed Cost Breakdown

The total estimated cost for the project is \$25,000. This figure encompasses development, testing, deployment, and initial maintenance.

Development: The majority of the budget is allocated to development, specifically in Phase 2. This covers the creation of a custom Ghost theme tailored to ACME-1's brand and functional requirements. It also includes custom integrations with other platforms, if required.



Testing: Thorough testing is crucial to ensure a stable and reliable platform. Testing costs are incorporated within Phases 3 and 4, covering unit testing, integration testing, and user acceptance testing (UAT). This includes the time and resources required to identify and resolve any bugs or issues.

Deployment: Deployment costs cover the setup of the production environment, migration of the Ghost platform, and configuration of DNS and other necessary services. This also includes initial performance optimization and security hardening.

Maintenance: While this proposal focuses on the initial development and deployment, ongoing maintenance is an important consideration. The initial budget includes a limited period of post-launch support to address any immediate issues. Long-term maintenance will be handled under a separate agreement.

Additional Costs

In addition to the phase-specific costs, other expenses need consideration:

- **Ghost Pro Subscription:** ACME-1 will be responsible for Ghost Pro subscription fees. The specific tier and associated costs will depend on ACME-1's requirements for traffic, storage, and features.

Change Orders

Any changes to the project scope may affect the budget. These changes will require a formal change order, detailing the impact on cost and timeline. DocuPal Demo, LLC will provide a detailed estimate for any proposed changes before implementation.

Deployment and Maintenance Strategy

Deployment

We will deploy your Ghost content platform using Ghost Pro managed hosting. This ensures a streamlined setup and optimal performance. The deployment process includes configuring your domain, setting up essential integrations, and migrating any existing content. We will work closely with you to ensure a smooth transition and minimal disruption to your current workflow.



Hosting and Infrastructure

Ghost Pro provides a fully managed hosting environment. This includes server maintenance, security updates, and performance optimization. With Ghost Pro, you benefit from a reliable and scalable infrastructure, allowing your platform to grow with your business.

Updates and Backups

Ghost Pro offers automatic updates to the Ghost software. This ensures that your platform always has the latest features and security patches. Regular backups are also performed automatically by Ghost Pro, providing data protection and disaster recovery capabilities.

Ongoing Support and Maintenance

Beyond Ghost Pro's managed services, DocuPal Demo, LLC will provide dedicated support to ACME-1. This includes prompt responses to technical inquiries, assistance with platform customization, and ongoing guidance on best practices. Our team will be available to address any issues and ensure your platform operates smoothly. We provide direct access to Ghost Pro support for critical issues, in addition to our dedicated support team. We are committed to providing reliable and responsive support to help ACME-1 maximize the value of its Ghost platform.

Risk Analysis and Mitigation

This section identifies potential risks associated with the Ghost development project and outlines strategies to mitigate them. We have considered technical, operational, and market-related risks to ensure a robust and successful implementation.

Technical Risks

One potential technical risk is plugin compatibility issues. Ghost relies on plugins to extend its functionality, and conflicts can arise between different plugins or with the core Ghost platform. To mitigate this, we will conduct thorough testing of all plugins in a staging environment before deploying them to the production environment. We will also prioritize using well-maintained and widely adopted



plugins with strong community support. If compatibility issues arise, we will explore alternative plugins or consider custom development to address specific needs.

Operational Risks

Content migration presents an operational risk. Transferring existing content to the new Ghost platform can be complex and time-consuming, potentially leading to data loss or inconsistencies. To minimize this risk, we will implement a phased content migration strategy. This involves migrating content in batches, validating the data after each migration, and providing user training on the new platform. This approach allows us to identify and resolve any issues early in the process, ensuring a smooth transition.

Market Risks

Market adoption rate represents a potential risk. If users are slow to adopt the new Ghost-based content platform, it could impact the project's overall success. To address this, we will closely monitor user feedback and system performance after launch. We will also provide comprehensive user training and support to encourage adoption. Additionally, we will implement a communication plan to highlight the benefits of the new platform and address any user concerns. Regular monitoring of these factors will allow us to adapt our strategies and maximize user engagement.

Conclusion and Next Steps

This proposal highlights Ghost as an ideal platform for ACME-1's content strategy. Ghost's speed, SEO capabilities, and membership features offer distinct advantages.

Approvals and Kickoff

To move forward, we require approval of this proposal and the outlined budget.

Follow-Up

We will follow up within one week to answer any questions and schedule a project kickoff meeting.

