

Table of Contents

Introduction	3
Ghost Integration Proposal: Introduction	3
Objectives	3
Scope	3
Background	3
Market and Technical Context	4
CMS Landscape	4
Acme, Inc.'s Technical Environment	4
Integration Scope and Objectives	4
Key Features	4
Impacted Systems and Workflows	5
Success Criteria	5
Technical Architecture and Requirements	5
API and Authentication	6
Data Synchronization	6
Security Requirements	6
Performance Requirements	7
Implementation Plan and Timeline	7
Integration Phases	7
Deliverables	8
Dependencies and Resource Needs	8
Project Timeline	8
Risk Analysis and Mitigation	9
Data Migration Risks	9
API Compatibility Risks	9
Security Risks	10
Evaluation Metrics and Success Criteria	10
Key Performance Indicators (KPIs)	10
Performance Monitoring	10
Security and Compliance Considerations	11
Compliance Frameworks	11
Data Protection	11
Security Protocols	11



Data Migration and Synchronization Strategy	11
Data Migration	12
Data Synchronization	12
Conclusion and Next Steps	12
Immediate Actions	12
Ongoing Support	12



Introduction

Ghost Integration Proposal: Introduction

This document outlines a proposal from Docupal Demo, LLC (Docupal) to integrate Ghost, a modern content management system, with Acme, Inc's (ACME-1) existing infrastructure. Our goal is to provide ACME-1 with a streamlined content publishing process, enhanced customer experiences, and more efficient marketing workflows.

Objectives

The primary objectives of this integration are to:

- Improve content publishing efficiency.
- Personalize customer experiences through targeted content delivery.
- Streamline marketing workflows by connecting disparate systems.

Scope

This proposal covers the integration of Ghost with ACME-1's current systems. It details the necessary steps, technologies, and resources required for a successful implementation. The integration will involve the ACME-1 Marketing Team, ACME-1 IT Department, DocuPal Demo, LLC Integration Team, and executive sponsors from both organizations.

Background

ACME-1 seeks to leverage Ghost to enhance its content management and delivery capabilities. By integrating Ghost, ACME-1 aims to improve its marketing effectiveness and customer engagement. Docupal's expertise in system integration and content management makes us well-suited to deliver this solution.



Market and Technical Context

CMS Landscape

The content management system (CMS) market continues to evolve, driven by the need for businesses to efficiently create, manage, and deliver digital experiences. Key trends include a growing emphasis on headless CMS architectures, increased personalization, and the integration of AI-powered content creation and optimization tools. Platforms are also adapting to support omnichannel content delivery, ensuring consistent brand experiences across various devices and channels. Ghost distinguishes itself by offering a focused publishing experience emphasizing speed and simplicity, a contrast to more complex, feature-rich platforms.

Acme, Inc.'s Technical Environment

ACME-1 operates within a cloud-based environment. This infrastructure supports integration with key business systems, specifically Salesforce and Marketo. Any Ghost integration must consider these existing integrations to ensure seamless data flow and operational efficiency. Docupal Demo, LLC will assess compatibility and develop an integration strategy minimizing disruption and maximizing synergy with ACME-1's current technology stack.

Integration Scope and Objectives

This document outlines the scope and objectives for integrating Ghost with ACME-1's existing systems. Docupal Demo, LLC will deliver a solution that enhances ACME-1's content management and marketing capabilities. The integration will focus on automating content publishing, personalizing content delivery, improving SEO, and streamlining marketing campaign management.

Key Features

The Ghost integration will enable the following features:

- **Automated Content Publishing:** Streamline the process of publishing content from ACME-1's content creation tools directly to the Ghost platform.



- **Personalized Content Delivery:** Utilize user data to deliver personalized content experiences to ACME-1's website visitors.
- **Enhanced SEO Capabilities:** Optimize content for search engines through improved metadata management and content structure.
- **Streamlined Marketing Campaign Management:** Integrate Ghost with ACME-1's marketing automation platform to improve campaign performance.

Impacted Systems and Workflows

The integration will impact the following systems and workflows:

- **Content Creation Workflows:** The content creation process will be modified to ensure compatibility with the Ghost platform.
- **Marketing Automation Processes:** Marketing automation workflows will be integrated with Ghost to deliver targeted content to specific audience segments.
- **Website Analytics Reporting:** Website analytics reporting will be enhanced to track the performance of content published through Ghost.

Success Criteria

The success of the Ghost integration will be measured by the following criteria:

- **Increased Website Traffic:** A measurable increase in website traffic following the integration.
- **Improved Engagement Metrics:** Higher engagement rates, such as time on page and bounce rate.
- **Streamlined Content Publishing Workflows:** A reduction in the time and effort required to publish content.

Technical Architecture and Requirements

This section details the technical architecture required for integrating Docupal Demo, LLC's services with ACME-1's Ghost platform. It outlines the API protocols, data synchronization methods, security standards, and performance considerations necessary for a successful integration.



API and Authentication

The Ghost API will be accessed using RESTful protocols. Authentication will be implemented using API keys and OAuth 2.0 to ensure secure access to ACME-1's Ghost data. API keys will be used for server-to-server communication, while OAuth 2.0 will manage user authentication and authorization.

Data Synchronization

Real-time data synchronization between Docupal Demo, LLC and ACME-1's Ghost platform will be achieved through a combination of webhooks and scheduled data imports.

- **Webhooks:** Ghost webhooks will trigger updates in Docupal Demo, LLC whenever content is created, updated, or deleted within Ghost. This ensures near real-time synchronization of data.
- **Scheduled Data Imports:** As a fallback and to ensure data consistency, scheduled data imports will be performed. These imports will run periodically (e.g., daily) to synchronize any data that may have been missed by the webhook mechanism.

Security Requirements

The integration must adhere to stringent security standards to protect ACME-1's data. Key security requirements include:

- **SOC 2 Compliance:** Docupal Demo, LLC will ensure that all systems and processes meet SOC 2 standards, including controls related to security, availability, processing integrity, confidentiality, and privacy.
- **GDPR Compliance:** The integration will comply with the General Data Protection Regulation (GDPR), ensuring that all personal data is processed lawfully, fairly, and transparently. This includes obtaining consent where necessary and providing individuals with the right to access, rectify, and erase their data.
- **HIPAA Compliance:** If ACME-1's Ghost platform contains protected health information (PHI), the integration must comply with the Health Insurance Portability and Accountability Act (HIPAA). This includes implementing technical, administrative, and physical safeguards to protect the confidentiality, integrity, and availability of PHI.



All data transmitted between Docupal Demo, LLC and ACME-1 will be encrypted in transit using HTTPS. Data at rest will be encrypted using AES-256 or equivalent encryption standards. Regular security audits and penetration testing will be conducted to identify and address any vulnerabilities. Access controls will be implemented to restrict access to sensitive data to authorized personnel only.

Performance Requirements

The integration must be designed to ensure minimal impact on the performance of ACME-1's Ghost platform. Performance considerations include:

- **API Response Times:** API requests should have response times of less than 500ms to ensure a responsive user experience.
- **Data Synchronization Latency:** Real-time data synchronization via webhooks should have a latency of less than 1 second. Scheduled data imports should be designed to minimize the load on the Ghost platform.
- **Scalability:** The integration should be scalable to handle increasing volumes of data and traffic. This includes the ability to scale the infrastructure supporting the integration as needed.

Performance monitoring and alerting will be implemented to identify and address any performance issues proactively.

Implementation Plan and Timeline

This section details the plan to integrate Ghost with ACME-1's existing systems. It outlines the key phases, deliverables, dependencies, and a project timeline. DocuPal Demo, LLC will provide dedicated development resources. ACME-1 will grant access to their systems and allocate subject matter experts.

Integration Phases

The integration will proceed in three phases:

1. **Discovery and Planning:** This initial phase focuses on understanding ACME-1's specific requirements. We will analyze existing systems and define the integration scope. A detailed Integration Design Document will be the key deliverable. Completion is scheduled for 2025-08-26.



2. **Development and Testing:** DocuPal Demo, LLC developers will build and configure the Ghost integration based on the design document. Rigorous testing will ensure functionality and stability. The Test Plan will document the testing strategy. We aim to complete this phase by 2025-09-16.
3. **Deployment and Training:** The integrated Ghost platform will be deployed to ACME-1's environment. DocuPal Demo, LLC will provide training materials to ACME-1 staff to ensure effective use of the new system. Go-live is targeted for 2025-09-30.

Deliverables

- Integration Design Document
- Test Plan
- Training Materials

Dependencies and Resource Needs

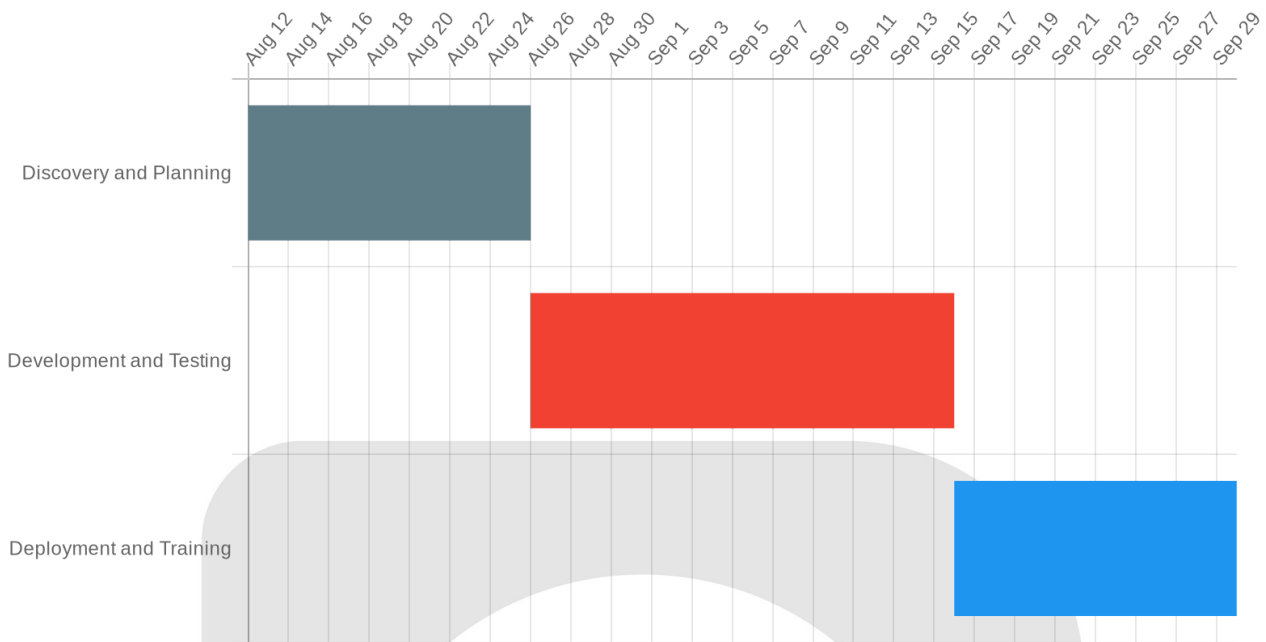
Successful integration depends on the following:

- Access to ACME-1's systems
- Dedicated development resources from DocuPal Demo, LLC
- Subject matter experts from ACME-1

Project Timeline

Task	Start Date	End Date
Phase 1: Discovery	2025-08-12	2025-08-26
Phase 2: Development	2025-08-26	2025-09-09
Phase 2: Testing	2025-09-09	2025-09-16
Phase 3: Deployment	2025-09-16	2025-09-23
Phase 3: Training	2025-09-23	2025-09-30
Go-Live		2025-09-30





Risk Analysis and Mitigation

Integrating Ghost with ACME-1's existing systems involves several potential risks. These include data migration challenges, possible API compatibility issues, and potential security vulnerabilities. Docupal Demo, LLC has identified these risks and developed mitigation strategies to ensure a smooth and secure integration process.

Data Migration Risks

Migrating data from ACME-1's current platform to Ghost could present challenges. Data loss or corruption during the migration process is a key concern. To address this, Docupal Demo, LLC will implement comprehensive data backup and recovery procedures before initiating any data transfer. These procedures will ensure that ACME-1's data can be quickly restored in case of any unforeseen issues.

API Compatibility Risks

Incompatibilities between Ghost's API and ACME-1's existing systems could disrupt the integration process. To mitigate this risk, Docupal Demo, LLC will conduct thorough compatibility testing. This testing will identify and resolve any API-

related issues before the full integration is deployed. Rollback plans are also in place if critical issues arise during the final deployment phase.

Security Risks

Integrating new systems always introduces potential security vulnerabilities. To minimize this risk, Docupal Demo, LLC will conduct comprehensive security audits throughout the integration process. These audits will identify and address any potential weaknesses. Docupal Demo, LLC will also implement industry-standard security practices to protect ACME-1's data and systems.

Evaluation Metrics and Success Criteria

Success of the Ghost integration will be measured by improvements in key performance indicators (KPIs) related to ACME-1's online presence and content strategy. We will track website traffic, user engagement, conversion rates, and content publishing frequency.

Key Performance Indicators (KPIs)

- **Website Traffic:** Monitor overall website visits, unique visitors, and page views to assess reach.
- **Engagement Metrics:** Track metrics such as bounce rate, time on page, and social shares to gauge content resonance.
- **Conversion Rates:** Measure the percentage of visitors completing desired actions, like form submissions or demo requests.
- **Content Publishing Frequency:** Assess the consistency and volume of content published on the Ghost platform.

Performance Monitoring

Post-integration performance will be monitored through a multi-faceted approach. Google Analytics will provide comprehensive website data. Ghost's built-in analytics will offer insights into content performance. Custom dashboards will consolidate data for easy visualization and reporting.



Security and Compliance Considerations

Docupal Demo, LLC prioritizes the security and privacy of ACME-1's data. We have designed our Ghost integration with robust security measures. This ensures compliance with relevant regulations.

Compliance Frameworks

Our integration adheres to GDPR and CCPA. We also address any industry-specific regulations relevant to ACME-1. We maintain up-to-date knowledge of evolving compliance requirements. This helps us ensure ongoing alignment.

Data Protection

User data is protected both in transit and at rest. We use strong encryption algorithms. Data anonymization techniques are implemented where applicable. Strict access controls limit data access to authorized personnel only.

Security Protocols

We enforce HTTPS for all web traffic. API keys are encrypted to prevent unauthorized access. Docupal Demo, LLC conducts regular security audits. We also perform penetration testing to identify and address potential vulnerabilities. These tests are performed by certified security professionals. We address any identified issues promptly.

Data Migration and Synchronization Strategy

This section outlines our approach to migrating ACME-1's existing data to the Ghost platform and keeping the systems synchronized after integration. We will migrate all blog posts, user data, and media assets.



Data Migration

Our data migration strategy focuses on accuracy and minimal disruption. We will perform data validation checks throughout the migration. These checks confirm data completeness and correctness. We will also use data cleansing procedures to fix inconsistencies or errors. After the migration, we will generate reconciliation reports. These reports compare the source and destination data to confirm a successful transfer.

Data Synchronization

Post-integration, we will keep ACME-1's data synchronized between systems. Content updates will synchronize in real-time. This ensures immediate reflection of changes. User data will synchronize daily. This includes user profiles and permissions. Synchronization triggers include content creation, content updates, and user actions. These triggers initiate the synchronization process. This keeps the systems aligned.

Conclusion and Next Steps

The proposed Ghost integration offers ACME-1 a robust solution for enhancing its content management and delivery capabilities. By leveraging Ghost's flexible platform, ACME-1 can expect improved content workflows and enhanced user engagement.

Immediate Actions

Following approval of this proposal, Docupal Demo, LLC will finalize the integration design document. This document will provide a detailed blueprint for the integration process. We will then schedule a kickoff meeting with the ACME-1 team. This meeting will align stakeholders and establish clear communication channels.

Ongoing Support

Docupal Demo, LLC is committed to the long-term success of this integration. We will provide ongoing performance monitoring to ensure optimal system operation. Regular security audits will be conducted to maintain data integrity and protect



against vulnerabilities. Comprehensive user training will also be provided to empower ACME-1's team to effectively utilize the new system.

