

# Table of Contents

<b>Introduction and Objectives</b>	<b>3</b>
Addressing User Needs	3
Core Objectives	3
<b>Market Analysis and Opportunity</b>	<b>3</b>
Gatsby Plugin Usage Trends	4
Untapped Plugin Opportunities	4
<b>Plugin Features and Technical Specifications</b>	<b>5</b>
Core Features	5
Technology Stack	5
Technical Architecture	5
Integration with Gatsby and Other Ecosystems	6
Technical Requirements	6
<b>Competitive Analysis</b>	<b>6</b>
Existing Gatsby Documentation Plugins	7
Gaps in Competitor Offerings	7
Feature Set Comparison	7
<b>Project Plan and Timeline</b>	<b>8</b>
Phase 1: Core Functionality Implementation	8
Phase 2: Template Customization and Search Enhancement	8
Phase 3: Testing and Deployment	8
Release Schedule	8
<b>Team Roles and Responsibilities</b>	<b>9</b>
Project Lead	9
Lead Developer	9
Client (Acme, Inc.)	10
Potential Collaboration	10
<b>Testing, Quality Assurance and Deployment</b>	<b>10</b>
Testing Frameworks and Tools	10
Quality Assurance Process	10
Deployment Strategy	10
<b>User Benefits and Impact</b>	<b>11</b>
SEO and User Experience	11
Measurable Improvements	11



<b>Documentation and Support</b>	11
Support Channels	12
Updates and Community Engagement	12



# Introduction and Objectives

This document outlines a proposal from Docupal Demo, LLC for the development of a Gatsby plugin designed to integrate our AI-powered documentation solutions into ACME-1's Gatsby websites. ACME-1 can leverage DocuPal's AI to automate and manage its documentation directly within the Gatsby framework.

## Addressing User Needs

Currently, managing documentation for Gatsby projects can be a time-consuming and complex process. The proposed plugin directly addresses this by automating documentation generation and streamlining content updates. This fills a critical gap in the market for efficient documentation management. ACME-1 will benefit from simplified version control and enhanced content accuracy.

## Core Objectives

The core objectives of this Gatsby plugin development are:

- **Automated Documentation Creation:** To automate the generation of documentation from source code and other relevant files.
- **Streamlined Content Updates:** To provide a seamless process for updating documentation content, ensuring accuracy and consistency.
- **Enhanced Searchability:** To improve the search functionality within the documentation, making it easier for users to find the information they need.
- **Improved User Experience:** To enhance the overall user experience by providing clear, concise, and easy-to-navigate documentation.

## Market Analysis and Opportunity

The Gatsby plugin ecosystem is a vibrant and growing market. Websites built with Gatsby rely on plugins to extend functionality and integrate with various services. Demand for plugins is driven by the increasing adoption of Gatsby as a preferred framework for building performant and modern web applications. Our analysis focuses on identifying key opportunities for new plugin development. We will target technology companies, SaaS providers, open-source projects, and educational platforms, as these sectors heavily rely on efficient and scalable web solutions.



## Gatsby Plugin Usage Trends

The number of Gatsby sites has steadily increased over the past several years. This growth fuels the demand for more plugins. We've observed a consistent upward trend in plugin usage across various categories, including SEO, analytics, e-commerce, and content management.

The chart above illustrates the estimated growth in Gatsby plugin usage from 2020 to 2025. The projection for 2025 is based on current adoption rates and anticipated market expansion.

## Untapped Plugin Opportunities

Despite the existing plugin library, several needs remain unmet. These represent significant opportunities for new plugin development:

- **Enhanced integrations with emerging SaaS platforms:** Many new SaaS tools lack dedicated Gatsby plugins. Building these integrations would provide significant value.
- **Improved performance optimization plugins:** As websites grow in complexity, performance becomes critical. Plugins that automate optimization tasks are in high demand.
- **Accessibility-focused plugins:** There is a growing need for plugins that help developers build more accessible websites.
- **Advanced analytics and reporting plugins:** Website owners want more in-depth insights into user behavior. Plugins that provide advanced analytics features are highly sought after.
- **Simplified e-commerce solutions:** Streamlining the process of building e-commerce sites with Gatsby is another area with potential.

## Plugin Features and Technical Specifications

This section details the features and technical specifications of the Gatsby plugin to be developed for ACME-1. The plugin will provide automated documentation generation, version control, comprehensive search, customizable templates, and integration with multiple data sources.



## Core Features

- **Automated Documentation Generation:** The plugin will automatically generate documentation from source code comments and structured data.
- **Version Control:** It will maintain documentation versions, allowing users to access documentation for specific software releases.
- **Search Functionality:** The plugin will include a robust search feature, enabling users to quickly find information within the documentation.
- **Customizable Templates:** Users can customize documentation templates to match their branding and style guidelines.
- **Data Source Integration:** It will seamlessly integrate with various data sources, including APIs, databases, and Markdown files.

## Technology Stack

The plugin will be built using the following technologies:

- **React:** For building interactive user interface components.
- **JavaScript:** For implementing plugin logic and functionality.
- **GraphQL:** For efficient data querying and manipulation.
- **Gatsby APIs:** To integrate with the Gatsby ecosystem and leverage its build process.
- **DocuPal's AI Engine:** For enhanced documentation generation and content enrichment.

## Technical Architecture

The plugin will leverage Gatsby's Node APIs to hook into the build process and transform data into documentation. The architecture comprises the following components:

- **Data Ingestion Module:** This module will fetch data from configured sources, such as code repositories, APIs, and databases.
- **Documentation Generation Engine:** This engine will use DocuPal's AI engine and customizable templates to generate documentation from the ingested data.
- **Search Indexing Module:** This module will create a search index of the generated documentation for fast and accurate search results.
- **User Interface Components:** These components will provide a user-friendly interface for browsing, searching, and customizing the documentation.



## Integration with Gatsby and Other Ecosystems

The plugin will integrate seamlessly with existing Gatsby projects. It will leverage Gatsby's GraphQL data layer to expose documentation data for querying and rendering. The plugin will also support integration with other popular Gatsby plugins and tools, such as:

- **gatsby-transformer-remark:** For processing Markdown files.
- **gatsby-source-filesystem:** For accessing local files.
- **gatsby-plugin-mdx:** For using MDX components in documentation.

## Technical Requirements

- **Gatsby Version:** 4.0 or higher.
- **Node.js Version:** 14.0 or higher.
- **GraphQL:** Basic understanding of GraphQL queries and schemas.
- **React:** Familiarity with React components and JSX syntax.

## Competitive Analysis

The Gatsby plugin market includes several options for documentation, but ACME-1 requires a solution that extends beyond basic functionality. Many existing plugins offer simple content display and organization. These often lack the advanced features Docupal Demo, LLC provides. Specifically, AI-driven content generation and intelligent search are not commonly found in competing products.

## Existing Gatsby Documentation Plugins

Several Gatsby plugins address documentation needs. These include:

- **Gatsby-source-filesystem:** A basic plugin for sourcing content from the file system.
- **Gatsby-transformer-remark:** Used for transforming Markdown files into HTML.
- **Gatsby-plugin-mdx:** Allows the use of MDX (Markdown with JSX) in Gatsby projects.
- **Gatsby-theme-documentation:** A pre-built theme for creating documentation sites.
- **ReadMe:** A commercial platform with a Gatsby integration.

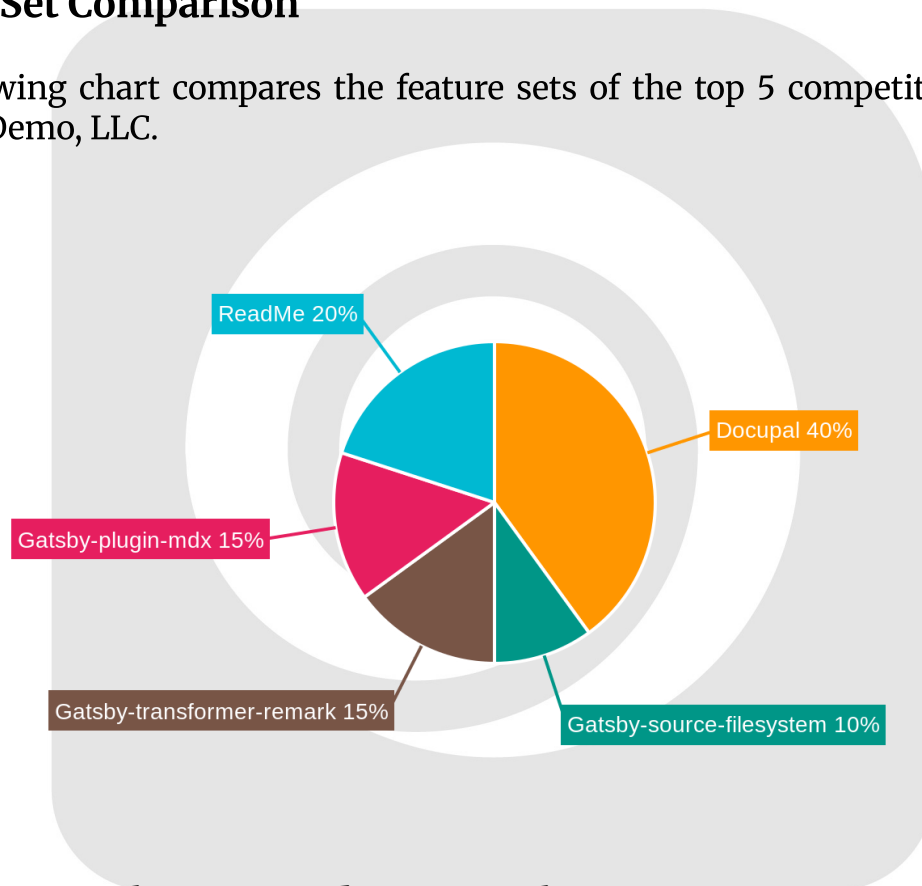


## Gaps in Competitor Offerings

Most free or open-source plugins focus on parsing and displaying Markdown or MDX files. They offer limited search capabilities and no AI-driven content generation. Commercial solutions like ReadMe provide more features but can be expensive and may not offer the same level of customization. Docupal Demo, LLC's plugin fills a critical gap by offering intelligent content creation and superior search within the Gatsby ecosystem. This provides ACME-1 with more advanced documentation capabilities without requiring a costly, fully managed platform.

## Feature Set Comparison

The following chart compares the feature sets of the top 5 competitors, including Docupal Demo, LLC.



## Project Plan and Timeline

Docupal Demo, LLC will deliver ACME-1's Gatsby plugin in three key phases. These phases ensure a structured approach, from initial development to final deployment.

## Phase 1: Core Functionality Implementation

This phase focuses on building the fundamental features of the Gatsby plugin. It will take approximately 4 weeks. We expect to complete this phase by 2025-09-09.

## Phase 2: Template Customization and Search Enhancement

Following the core functionality, we will focus on template customization options and enhanced search capabilities. This phase is dependent on the successful completion of Phase 1. Phase 2 is estimated to take 3 weeks, concluding around 2025-09-30.

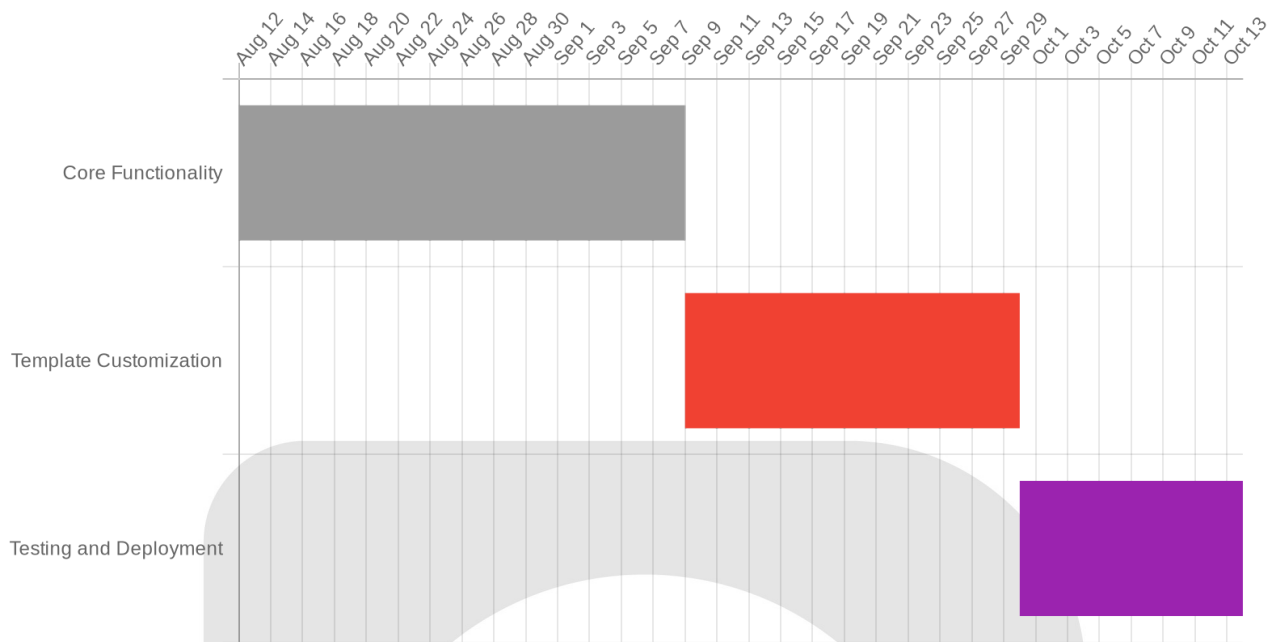
## Phase 3: Testing and Deployment

The final phase involves rigorous testing of all features and deployment of the Gatsby plugin. This phase is dependent on the successful completion of Phase 2. We anticipate this phase will take 2 weeks, with an expected completion date around 2025-10-14.

## Release Schedule

Our planned initial release date is 9 weeks from the project start, targeting 2025-10-14. After the initial launch, we will provide regular updates and feature enhancements every 4 weeks.





## Team Roles and Responsibilities

Our team structure is designed for clear communication and efficient plugin development. Key roles and responsibilities are defined as follows:

### Project Lead

John Smith will serve as the Project Lead. John is responsible for overall project management. This includes client communication with ACME-1. He will also manage timelines and ensure project milestones are met.

### Lead Developer

Jane Doe will be the Lead Developer. Jane will oversee the plugin development and technical implementation. She will ensure the plugin meets ACME-1's requirements.

### Client (Acme, Inc.)

ACME-1 will provide ongoing feedback and clarify requirements throughout the project. Their input is crucial for the plugin's success.

## Potential Collaboration

We may collaborate with UI/UX design experts. This would enhance template customization options. Any external collaboration will be communicated promptly.

# Testing, Quality Assurance and Deployment

Our approach to testing and quality assurance ensures ACME-1's Gatsby plugin is reliable, performant, and compatible across different environments. We will employ a multi-faceted testing strategy throughout the development lifecycle.

## Testing Frameworks and Tools

We will use Jest for unit testing, focusing on individual components and functions. Cypress will be used for integration and end-to-end testing, simulating user interactions and verifying the plugin's behavior within a Gatsby environment. Gatsby's built-in testing tools will further support component and page testing.

## Quality Assurance Process

Our QA process involves comprehensive testing at each stage of development. Unit tests will validate the functionality of individual modules. Integration tests will ensure seamless interaction between different parts of the plugin. User acceptance testing (UAT) will be conducted to verify that the plugin meets ACME-1's requirements and provides a satisfactory user experience. This includes checks for functionality, performance, accessibility, and compatibility with various Gatsby configurations.

## Deployment Strategy

Upon successful completion of testing and QA, the plugin will be deployed to the npm registry, making it available to the wider Gatsby community. We will also submit the plugin to Gatsby's plugin library, increasing its visibility and accessibility for Gatsby developers. Detailed documentation will accompany the plugin,



providing clear instructions for installation, configuration, and usage. We will follow industry best practices for versioning and maintain the plugin with ongoing updates and bug fixes.

## User Benefits and Impact

This Gatsby plugin offers significant benefits for both ACME-1's users and its documentation management team. It directly improves site performance by streamlining how documentation is delivered. Users will experience faster loading times and a more responsive interface when accessing documentation.

### SEO and User Experience

The plugin enhances SEO by generating structured content for documentation pages. This makes it easier for search engines to crawl and index the documentation, leading to improved search rankings. User experience is also significantly improved. The plugin provides easy-to-navigate and searchable documentation, helping users quickly find the information they need. The intelligent search and content suggestions further enhance this experience.

### Measurable Improvements

ACME-1 can expect a measurable impact after the plugin is deployed. We anticipate a 30% reduction in the time spent on documentation maintenance. The improved user experience should also lead to a 20% increase in user engagement with the documentation. Finally, the SEO optimizations will result in improved search rankings for ACME-1's documentation pages, driving more organic traffic to the site.

## Documentation and Support

We will provide comprehensive documentation to ensure seamless integration and usage of the Gatsby plugin. This includes detailed guides for both end-users and developers. Documentation will be available in Markdown, HTML, and DocuPal's custom format to cater to various preferences.



## Support Channels

ACME-1 will have access to ongoing support through several channels:

- **Dedicated Support Team:** A specialized team will address inquiries and provide assistance with plugin-related issues.
- **Public Issue Tracker:** A public platform for reporting bugs, requesting features, and tracking the progress of resolutions.

## Updates and Community Engagement

We plan regular updates to address bugs, enhance performance, and introduce new features. We will foster active engagement within the developer community through:

- **Dedicated Forum:** A platform for discussions, knowledge sharing, and peer support.
- **Contribution Guidelines:** Clear guidelines for developers interested in contributing to the plugin's development.
- **Social Media Communication:** Regular updates and announcements via social media channels to keep the community informed.

