

# Table of Contents

<b>Executive Summary</b>	<b>3</b>
Key Benefits	3
Migration Approach	3
<b>Current Website Assessment</b>	<b>4</b>
Performance Bottlenecks	4
Content Management	4
Development Inefficiencies	4
Technology and Architecture	4
Performance Comparison	5
<b>Benefits of Migrating to Gatsby</b>	<b>5</b>
Enhanced Site Performance	5
Improved SEO	5
Streamlined Developer Workflows	5
Scalability and Security	6
<b>Migration Strategy and Approach</b>	<b>6</b>
Migration Phases	6
Content and Asset Migration	7
Tools and Plugins	7
Testing and Quality Assurance	7
<b>Technology and Tooling Overview</b>	<b>8</b>
Gatsby Plugins	8
Headless CMS and API Integrations	8
CI/CD Implementation	8
Customizations and Scripting	9
<b>Project Timeline and Milestones</b>	<b>9</b>
Project Phases and Durations	9
Milestones	9
Project Schedule	10
<b>Risk Assessment and Mitigation</b>	<b>10</b>
Technical Risks	10
Resource and Skill Risks	11
Fallback Plan	11
<b>Cost Analysis and Budget</b>	<b>11</b>



Migration Costs .....	12
Projected Savings .....	12
Return on Investment (ROI) .....	12
Budget Breakdown .....	12
Projected vs. Current Operating Costs .....	13
<b>Team Roles and Responsibilities .....</b>	<b>13</b>
Key Team Members .....	13
Stakeholder Involvement .....	13
<b>Conclusion and Next Steps .....</b>	<b>14</b>
Initiating the Migration .....	14
Measuring Success .....	14



# Executive Summary

This proposal outlines Docupal Demo, LLC's plan to migrate ACME-1's existing website to Gatsby. The primary objective is to enhance website performance, improve search engine optimization (SEO), and streamline developer workflows. This migration will directly benefit ACME-1's marketing team, development team, content creators, and executive leadership.

## Key Benefits

The migration to Gatsby is projected to yield several key benefits:

- **Faster Page Loads:** Gatsby's static site generation results in significantly faster loading times, improving user experience.
- **Improved SEO:** Enhanced site speed and structure will contribute to higher search engine rankings.
- **Streamlined Development:** Gatsby's modern development practices will boost developer productivity.
- **Scalability:** The new architecture will provide improved scalability to accommodate future growth.

## Migration Approach

Docupal Demo, LLC will manage the entire migration process, ensuring a smooth transition with minimal disruption to ACME-1's operations. Our approach includes:

1. **Assessment and Planning:** A thorough analysis of the current website and development of a detailed migration plan.
2. **Gatsby Development:** Building the new website on the Gatsby framework, incorporating all existing content and functionality.
3. **Testing and Optimization:** Rigorous testing to ensure optimal performance and SEO.
4. **Deployment and Support:** Launching the new website and providing ongoing support.

This migration represents a strategic investment in ACME-1's online presence, positioning the company for continued success.



# Current Website Assessment

ACME-1's current website faces several challenges that impact its overall effectiveness and business goals. Our assessment identifies key areas for improvement.

## Performance Bottlenecks

A primary concern is the website's slow page load times. This negatively affects user experience and contributes to higher bounce rates. Slow loading speeds also hinder search engine optimization (SEO) efforts, resulting in lower rankings and reduced organic traffic.

## Content Management

Content updates are currently a cumbersome process. The existing system makes it difficult for ACME-1 to efficiently create, edit, and publish content. This lack of agility impacts ACME-1's ability to keep the website fresh and relevant.

## Development Inefficiencies

The current development processes are inefficient. This translates to longer development cycles and higher costs for website maintenance and updates. Streamlining these processes is crucial for future growth and scalability.

## Technology and Architecture

A detailed analysis of ACME-1's website architecture and technologies is needed to pinpoint specific areas for optimization. Understanding the current infrastructure will inform our migration strategy and ensure a smooth transition to Gatsby.

## Performance Comparison

The following chart illustrates the anticipated performance improvements after migrating to Gatsby:



The data is represented in seconds for page load time and content update time, and an arbitrary ranking scale for SEO ranking.

## Benefits of Migrating to Gatsby

Migrating to Gatsby offers ACME-1 significant advantages across several key areas. These improvements will lead to a better user experience, increased efficiency, and stronger business outcomes.

### Enhanced Site Performance

Gatsby excels in site performance due to its static site generation approach. Each page is pre-rendered into static HTML at build time. This eliminates server-side rendering delays and ensures exceptionally fast loading times for users.

As the chart illustrates, Gatsby significantly reduces page load times compared to a traditional dynamic website.

### Improved SEO

Gatsby creates clean, optimized HTML, which is ideal for search engine crawlers. The improved site speed, a direct result of Gatsby's static nature, positively impacts search engine rankings. Managing metadata within Gatsby is also streamlined, further enhancing SEO efforts.

### Streamlined Developer Workflows

Developer workflows are significantly improved with Gatsby. Features like hot reloading enable developers to see changes in real-time, accelerating the development process. The GraphQL data layer provides a unified way to access and manage data from various sources. Gatsby's component-based architecture promotes code reusability and simplifies maintenance.

### Scalability and Security

Gatsby's static site generation inherently enhances security. Without a dynamic server component, there are fewer vulnerabilities to exploit. Its scalable architecture is designed to handle traffic spikes efficiently. This ensures consistent performance even under heavy load.



# Migration Strategy and Approach

Docupal Demo, LLC will execute a comprehensive migration plan to transition ACME-1 to a Gatsby-powered website. This plan encompasses distinct phases, ensuring a smooth and efficient transition.

## Migration Phases

Our migration process will follow these key phases:

1. **Planning:** We will conduct a thorough analysis of ACME-1's existing website, content, and functionalities. This phase includes defining migration goals, identifying key performance indicators (KPIs), and establishing a detailed project timeline.
2. **Setup:** We will configure the Gatsby development environment, including setting up necessary tools, libraries, and plugins. A headless CMS will be selected and configured to manage ACME-1's content.
3. **Content Migration:** We will migrate ACME-1's existing content to the chosen headless CMS. This includes transferring text, images, and other media assets. Content will be structured and optimized for Gatsby's data layer.
4. **Theme Development:** We will develop a custom Gatsby theme that aligns with ACME-1's brand identity and design requirements. This involves creating templates, components, and styles to ensure a visually appealing and user-friendly website.
5. **Testing:** We will conduct rigorous testing to ensure the migrated website functions correctly and meets performance expectations. This includes unit tests, integration tests, performance testing, and user acceptance testing (UAT).
6. **Deployment:** We will deploy the Gatsby website to a suitable hosting platform. This involves configuring servers, setting up continuous integration/continuous deployment (CI/CD) pipelines, and ensuring optimal performance.
7. **Post-Deployment Monitoring:** We will monitor the Gatsby website's performance, security, and user experience after deployment. This includes tracking KPIs, identifying and resolving issues, and implementing ongoing improvements.





## Content and Asset Migration

Content migration will involve transferring all existing content from ACME-1's current platform to a headless CMS. This will allow for efficient content management and delivery within the Gatsby framework. Assets, such as images and videos, will be optimized for web performance and integrated into Gatsby's data layer for efficient retrieval and rendering.

## Tools and Plugins

We will leverage a variety of Gatsby plugins to streamline the migration process and enhance website functionality. These include:

- Gatsby plugins for sourcing data from the chosen headless CMS.
- Gatsby plugins for image optimization, ensuring fast loading times and efficient asset delivery.
- Gatsby plugins for SEO, improving search engine visibility and organic traffic.

## Testing and Quality Assurance

To guarantee the quality and reliability of the migrated Gatsby website, we will implement a comprehensive testing strategy. This includes:

- **Unit Tests:** Verifying the functionality of individual components and modules.
- **Integration Tests:** Ensuring seamless interaction between different parts of the website.
- **Performance Testing:** Assessing website speed, scalability, and responsiveness under various load conditions.
- **User Acceptance Testing (UAT):** Allowing ACME-1's stakeholders to review and approve the migrated website before launch.

## Technology and Tooling Overview

This section outlines the technology stack, Gatsby plugins, and third-party integrations essential for ACME-1's Gatsby migration. Our approach leverages industry-standard tools to ensure a smooth transition and a high-performing final product.



## Gatsby Plugins

We will utilize the following core Gatsby plugins:

- gatsby-source-filesystem: To source data from ACME-1's file system.
- gatsby-transformer-remark: To transform Markdown content into HTML.
- gatsby-plugin-image: For optimized image delivery and management.
- gatsby-plugin-sharp: To process and optimize images using Sharp.
- gatsby-plugin-react-helmet: To manage document head metadata.

These plugins are crucial for content sourcing, transformation, image optimization, and SEO management.

## Headless CMS and API Integrations

The migration will integrate with a headless CMS such as Contentful or Sanity, depending on ACME-1's preference and existing infrastructure. Additionally, we will integrate with REST and GraphQL APIs to fetch and display dynamic data. These integrations ensure content flexibility and scalability.

## CI/CD Implementation

We will implement a robust CI/CD pipeline using tools such as GitHub Actions, GitLab CI, or Jenkins. This pipeline will automate testing, building, and deployment processes, ensuring continuous integration and delivery of updates.

## Customizations and Scripting

Custom scripts may be required for specific data transformations, integrations, and functionality tailored to ACME-1's unique needs. These scripts will ensure data integrity and seamless integration with existing systems.

## Project Timeline and Milestones

Docupal Demo, LLC will execute the Gatsby migration project for ACME-1 according to the timeline and milestones detailed below. We have carefully planned each phase to ensure a smooth and efficient transition.





## Project Phases and Durations

The project consists of six key phases, each with a defined duration:

- **Planning:** 2 weeks
- **Setup:** 1 week
- **Content Migration:** 4 weeks
- **Theme Development:** 6 weeks
- **Testing:** 2 weeks
- **Deployment:** 1 week
- **Post-Deployment Monitoring:** Ongoing

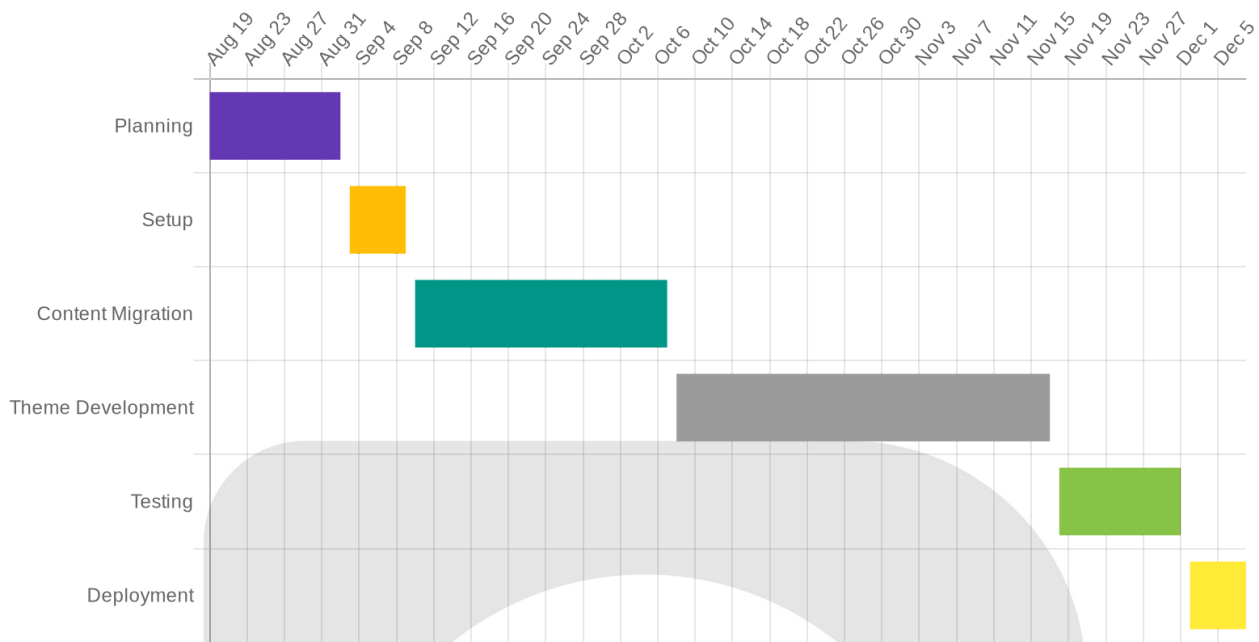
## Milestones

We will track progress against these critical milestones:

1. **Planning Phase Completion:** Agreement on project scope, requirements, and design specifications.
2. **CMS Setup:** Environment configured and ready for content.
3. **Content Migration Completion:** All existing content successfully migrated to the new Gatsby site. This is dependent on the successful completion of the CMS setup.
4. **Theme Development Completion:** Custom theme implemented and integrated with the Gatsby site. This phase is dependent on the successful completion of the Content Migration.
5. **User Acceptance Testing (UAT) Passed:** ACME-1's team approves the migrated site after testing.
6. **Final Deployment:** The new Gatsby site is live and accessible to users.

## Project Schedule

The following table illustrates the project phases, durations, start and end dates and dependencies.



## Risk Assessment and Mitigation

Migrating ACME-1 to Gatsby carries inherent risks. We've identified key areas and developed mitigation plans to minimize potential disruptions.

### Technical Risks

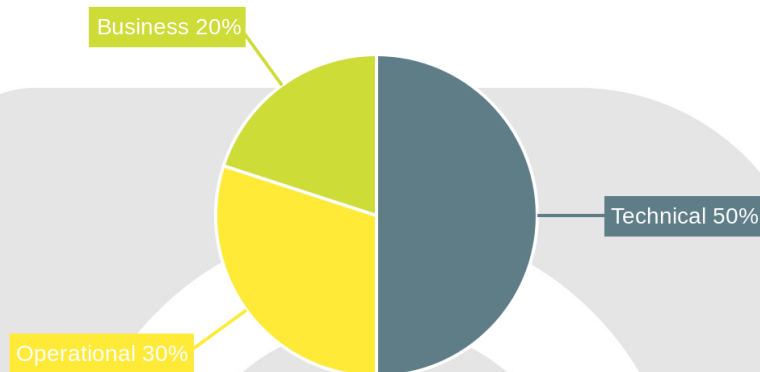
Technical challenges include data loss during the migration process, compatibility issues between existing systems and the new Gatsby environment, and potential performance bottlenecks. To prevent data loss, we will implement regular data backups before and during the migration. A dedicated staging environment will be set up to thoroughly test compatibility and identify performance issues before deployment. Continuous monitoring after launch will help detect and resolve any new performance bottlenecks.

### Resource and Skill Risks

A potential shortage of skilled Gatsby developers could impact the project timeline. We will address this by providing training to existing team members and exploring the possibility of hiring experienced Gatsby professionals.

## Fallback Plan

In the event of critical issues during or after migration, a rollback plan will revert the site to its original state. We will also secure extended support from Gatsby experts to ensure timely resolution of any unforeseen problems.



## Cost Analysis and Budget

This section details the costs associated with migrating ACME-1's website to Gatsby. We have considered resource costs, licensing, and potential savings. The migration aims to reduce operational expenses and improve overall efficiency.

### Migration Costs

The budget encompasses several key areas:

- **Development Labor:** This includes the hours required for our team to perform the migration, develop custom components, and ensure seamless integration.
- **Gatsby Cloud Hosting:** We have included the cost of Gatsby Cloud hosting based on ACME-1's anticipated traffic and usage.
- **CMS Subscription:** Costs for your Content Management System (CMS) during the migration.

- **Plugins and Integrations:** Some plugins might require licensing fees or subscriptions.
- **Contingency:** We have allocated 10% of the total project budget as a contingency to address unforeseen issues or changes in scope.

### Projected Savings

Following the Gatsby migration, ACME-1 can expect savings in several areas:

- **Reduced Hosting Costs:** Gatsby Cloud offers efficient hosting solutions, potentially lowering ACME-1's current hosting expenses.
- **Increased Traffic and Conversions:** Gatsby's performance enhancements can drive more traffic and improve conversion rates, leading to higher revenue.
- **Improved Developer Efficiency:** Gatsby's modern development environment can increase developer productivity, reducing long-term development costs.

### Return on Investment (ROI)

We project that the increase in traffic and conversions resulting from the migration will lead to a significant return on investment for ACME-1. The improved website performance and user experience should drive revenue growth.

### Budget Breakdown

Item	Estimated Cost (USD)
Development Labor	15,000
Gatsby Cloud Hosting	3,000
CMS Subscription	1,000
Plugins and Integrations	500
Contingency (10%)	1,950
Total Estimated Cost	21,450

### Projected vs. Current Operating Costs

## Team Roles and Responsibilities



Docupal Demo, LLC will provide a dedicated team to ensure the successful migration of ACME-1's website to Gatsby. Our team's structure ensures clear accountability and efficient project execution.

## Key Team Members

- **Project Manager:** The Project Manager will oversee all aspects of the migration, ensuring it stays on schedule and within budget. They will also be the primary point of contact for ACME-1, managing communication and providing regular updates.
- **Lead Developer:** The Lead Developer will be responsible for the technical implementation of the Gatsby migration. This includes configuring the Gatsby environment, developing custom components, and ensuring seamless integration with existing systems.
- **Content Strategist:** The Content Strategist will manage the migration of all website content to the new Gatsby platform. This includes auditing existing content, optimizing it for Gatsby, and ensuring a smooth transition for ACME-1's users.
- **QA Engineer:** The QA Engineer will rigorously test the migrated website to ensure its quality, performance, and functionality. This includes identifying and resolving any bugs or issues before launch.

## Stakeholder Involvement

Executive stakeholders from ACME-1 will be involved in key decision-making processes throughout the migration. Docupal Demo, LLC will also leverage external Gatsby experts for complex configurations or troubleshooting, should the need arise. The Project Manager will facilitate communication between all parties, ensuring transparency and alignment throughout the project.

## Conclusion and Next Steps

Migrating to Gatsby offers ACME-1 a pathway to improved website performance, enhanced SEO capabilities, and a more streamlined developer experience. This strategic move is designed to address current website limitations and position ACME-1 for future growth.



## Initiating the Migration

To begin the Gatsby migration, we propose the following steps:

- **Kickoff Meeting:** Schedule a meeting with key stakeholders from both Docupal Demo, LLC and ACME-1 to align on project goals, timelines, and communication protocols.
- **CMS Finalization:** Confirm the selection of the Content Management System (CMS) to be integrated with Gatsby.
- **Development Environment Setup:** Establish the necessary development environment and infrastructure to support the migration process.

## Measuring Success

Post-migration success will be evaluated using these key performance indicators:

- Website traffic
- Conversion rates
- SEO rankings
- Page load times
- Developer satisfaction

