

Table of Contents

Introduction	3
Project Overview	3
About Acme, Inc.	3
Project Scope and Objectives	3
Scope of Work	3
Key Deliverables	4
Project Objectives	4
Technical Architecture	4
System Architecture	5
API and Integrations	5
Hosting and Deployment	5
Architecture Efficiency	5
Project Timeline and Milestones	5
Project Phases and Schedule	6
Project Milestones	6
Gantt Chart	7
Budget and Cost Estimates	7
Development Costs	8
Recurring Costs	8
Risk Mitigation	8
Total Project Cost	8
Team and Roles	9
Project Team	9
Core Team	9
External Stakeholders	9
Communication Plan	9
Risk Assessment and Mitigation	10
Potential Risks	10
Mitigation Strategies	10
Migration and Integration Strategy	10
Data Migration	10
System Integration	11
Data Synchronization	11



Post-launch Support and Maintenance	11
Ongoing Support and Maintenance Packages	11
Service Level Agreement (SLA)	12
Conclusion and Next Steps	12
Initiating the Project	12



Introduction

This document presents a comprehensive proposal from Docupal Demo, LLC to Acme, Inc. for the development of a Strapi-based Content Management System (CMS). Our aim is to address Acme, Inc.'s content management challenges. We understand that inefficient content handling leads to delays in website updates and inconsistencies in branding.

Project Overview

This project focuses on creating a streamlined and efficient content management workflow. By implementing Strapi, we will empower Acme, Inc. to enhance its digital experience delivery. Our solution will simplify content creation, publishing, and overall management.

About Acme, Inc.

Acme, Inc., located in Wilsonville, Oregon, is a business that requires a robust CMS solution. This solution will support their content strategy and digital presence. Our proposed Strapi development will directly support Acme, Inc.'s goals for improved content management and brand consistency.

Project Scope and Objectives

This project aims to develop a robust content management system (CMS) for ACME-1 using Strapi. The CMS will empower ACME-1 to efficiently manage and distribute its content. Our team will deliver a fully functional Strapi-based backend, tailored to ACME-1's specific needs.

Scope of Work

The project encompasses the following key areas:

- **Strapi Setup and Configuration:** We will install, configure, and customize the Strapi CMS to meet ACME-1's requirements.
- **Content Modeling:** We will define and implement content types, including Articles, Products, and Events, within Strapi.



- **User Management:** The system will support different user roles, such as Editor, Publisher, and Administrator, with varying levels of access and permissions.
- **API Generation:** Strapi's API generation capabilities will be leveraged to create a comprehensive set of APIs for content delivery.
- **Media Management:** We will configure Strapi's media library for efficient storage and management of images, videos, and other digital assets.
- **Integrations:** The Strapi CMS will be integrated with ACME-1's existing CRM and marketing automation systems to ensure seamless data flow.

Key Deliverables

The primary deliverables for this project include:

- A fully configured Strapi CMS instance.
- Defined content models for Articles, Products, and Events.
- Configured user roles and permissions.
- A complete set of generated APIs for content access.
- Integration with ACME-1's CRM and marketing automation systems.
- Comprehensive documentation.

Project Objectives

The main objectives of this project are to:

- Provide ACME-1 with a user-friendly CMS for managing its content.
- Streamline the content creation and publishing process.
- Enhance content delivery through robust APIs.
- Improve data consistency by integrating with existing systems.
- Empower ACME-1 to scale its content operations efficiently.

Technical Architecture

System Architecture

Our proposed solution utilizes a robust and modern technology stack to ensure performance, scalability, and maintainability. The core of the system is built upon Node.js, providing a JavaScript runtime environment for server-side logic. We selected PostgreSQL as the database solution due to its reliability, ACID compliance,



and suitability for handling structured data. The front-end will be developed using React, a JavaScript library for building user interfaces, ensuring a dynamic and responsive user experience.

API and Integrations

Strapi will serve as the central content management system (CMS), exposing REST APIs for seamless integration with other systems. These APIs will allow ACME-1 to easily retrieve and manage content from various applications and platforms. Additionally, we will leverage webhooks to enable real-time updates and event-driven communication between Strapi and external services. This integration strategy promotes a loosely coupled architecture, enhancing flexibility and adaptability.

Hosting and Deployment

The application will be hosted on AWS Cloud, leveraging its scalable infrastructure and comprehensive suite of services. We will implement a CI/CD pipeline to automate the build, test, and deployment processes. This pipeline will ensure consistent and reliable deployments, minimizing downtime and reducing the risk of errors. Automated deployments enable faster release cycles and quicker iteration on new features.

Architecture Efficiency

The new architecture will improve the system efficiency.

Project Timeline and Milestones

This section details the proposed project timeline, outlining key phases, milestones, and deliverables. We will track progress through weekly reports and milestone reviews to ensure timely completion and alignment with ACME-1's expectations. Critical path activities include content model design and CRM integration, which will receive focused attention.



Project Phases and Schedule

The project is structured into four distinct phases:

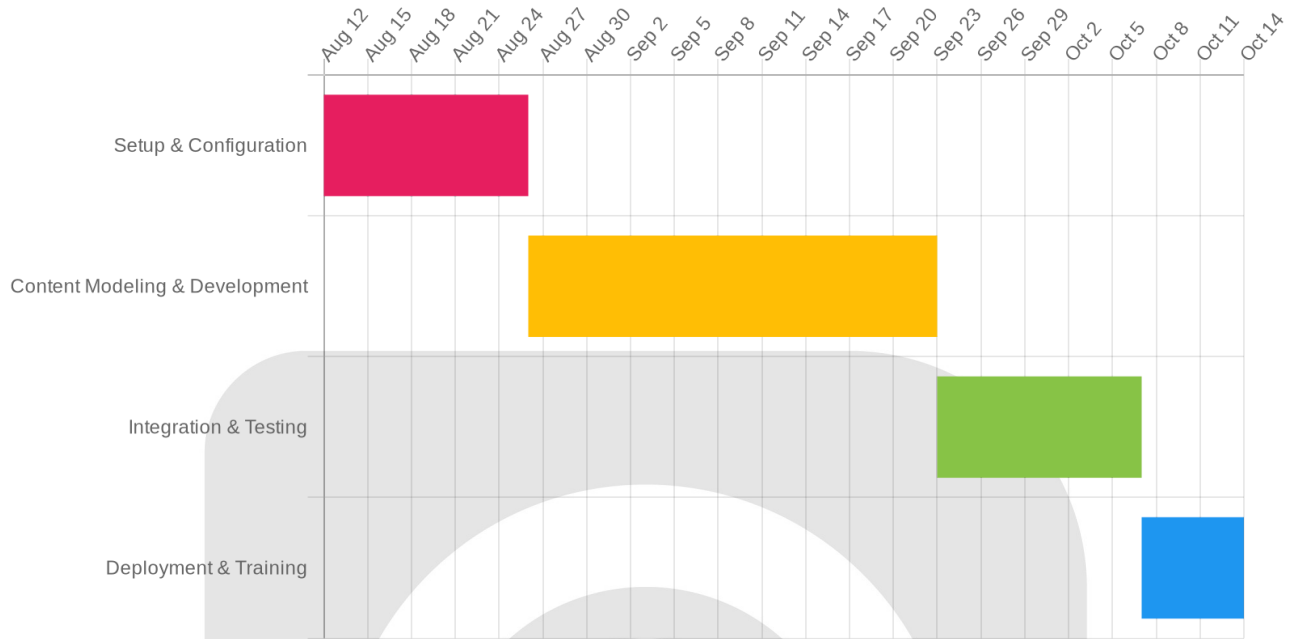
1. **Setup & Configuration (2 weeks):** This initial phase involves setting up the Strapi environment and configuring essential project settings. We anticipate completing this phase by 2025-08-26.
2. **Content Modeling & Development (4 weeks):** We will focus on designing the content models and developing the necessary components. This phase is crucial and requires careful planning. We expect to complete this phase by 2025-09-23.
3. **Integration & Testing (2 weeks):** This phase integrates Strapi with other systems and conducts thorough testing to ensure everything functions correctly. Completion is expected by 2025-10-07.
4. **Deployment & Training (1 week):** We will deploy the Strapi application to the production environment and provide training to ACME-1's team. We aim to finish by 2025-10-14.

Project Milestones

Milestone	Expected Completion Date	Description
Environment Setup Complete	2025-08-19	Strapi environment is set up and configured.
Content Model Design	2025-09-09	Content model is designed and approved.
Core Features Developed	2025-09-23	Development of the core features is complete.
Integration Complete	2025-10-07	Strapi is integrated with all required systems.
User Acceptance Testing	2025-10-07	ACME-1 completes user acceptance testing.
Project Launch	2025-10-14	Strapi application is deployed and live.
Training Complete	2025-10-14	Training sessions for ACME-1's team are completed.



Gantt Chart



Budget and Cost Estimates

This section provides a detailed breakdown of the estimated costs associated with the Strapi development project for ACME-1. The budget covers all phases, from initial setup to deployment and ongoing support. All costs are estimated in USD, Docupal Demo, LLC's base currency.

Development Costs

The development costs are divided into four phases. Each phase has a specific set of deliverables and associated expenses.

Phase	Description	Estimated Cost
Phase 1	Project setup and initial configuration	\$5,000
Phase 2	Core feature development and API implementation	\$10,000
Phase 3	Testing and quality assurance	\$5,000



Phase	Description	Estimated Cost
Phase 4	Deployment and initial support	\$2,000
Total Development Costs		\$22,000

Recurring Costs

In addition to the one-time development costs, there will be recurring expenses. These are primarily related to hosting the Strapi application on AWS. Specific costs will vary based on usage and infrastructure needs. A detailed breakdown of these costs will be provided separately as needed.

Risk Mitigation

A contingency of 10% of the total budget has been allocated to address potential risks and unforeseen issues that may arise during the project. This amounts to \$2,200. It helps ensure that the project stays within budget and timeline, even if unexpected challenges occur.

Total Project Cost

The total estimated cost for the Strapi development project is calculated by adding the development costs and the risk mitigation.

Total Estimated Project Cost = Total Development Costs + Risk Mitigation Total
Estimated Project Cost = \$22,000 + \$2,200 Total Estimated Project Cost = \$24,200

Team and Roles

Project Team

Docupal Demo, LLC will provide a dedicated team to ensure the successful development and deployment of your Strapi project. Our team's structure promotes efficient communication and streamlined execution. We have both internal and external members.



Core Team

Our core team consists of the following key personnel:

- **Project Manager:** This role is responsible for overall project planning, execution, and monitoring. They will serve as the primary point of contact for Acme Inc., ensuring clear communication and timely updates throughout the project lifecycle.
- **Lead Developer:** The Lead Developer will oversee the technical aspects of the project. They will be responsible for the architecture, development standards, and code quality.
- **Front-end Developer:** The Front-end Developer will focus on building the user interface and ensuring a seamless user experience. They will work closely with the Lead Developer to integrate the front-end with the Strapi backend.

External Stakeholders

Acme Inc.'s involvement is crucial to the project's success. Key stakeholders from the marketing and IT departments will collaborate with our team, providing valuable insights and feedback throughout the development process.

Communication Plan

Effective communication is paramount. Our team will maintain open lines of communication through:

- Daily stand-up meetings to discuss progress and address any roadblocks.
- Weekly team meetings to review overall project status and plan upcoming tasks.
- A dedicated Slack channel for real-time communication and collaboration.

Risk Assessment and Mitigation

This section identifies potential risks associated with the Strapi development project for ACME-1 and outlines mitigation strategies. We are committed to proactively managing risks to ensure successful project delivery.



Potential Risks

Several technical and operational risks have been identified. These include potential data migration issues from ACME-1's existing systems to the new Strapi CMS. Integration complexities with ACME-1's other business systems also pose a risk. These challenges could potentially impact project timelines and budgets.

Mitigation Strategies

Docupal Demo, LLC will conduct regular risk assessments throughout the project lifecycle. We will also create and maintain detailed documentation of our mitigation strategies. To address data migration risks, we will develop comprehensive backup plans and perform thorough testing before, during, and after the migration process. For integration complexities, we will explore and document alternative integration methods to ensure seamless data flow between systems. These strategies will allow us to minimize the impact of potential disruptions.

Migration and Integration Strategy

Our approach ensures a smooth transition and seamless connectivity between your existing systems and the new Strapi CMS.

Data Migration

We will migrate your existing product data from the legacy database to the new Strapi CMS. This process includes data extraction, transformation, and loading (ETL). We will establish data validation rules to ensure data integrity during the migration.

System Integration

We will integrate Strapi with your CRM for lead generation. This integration will allow new leads captured in Strapi to be automatically sent to your CRM. We will also integrate Strapi with your marketing automation platform for email campaigns. This integration will enable you to create and manage email campaigns directly from Strapi, using content stored within the CMS.



Data Synchronization

To maintain data consistency, we will implement scheduled synchronization jobs between Strapi and your CRM and marketing automation platform. These jobs will ensure that data is up-to-date across all systems.

Post-launch Support and Maintenance

Docupal Demo, LLC provides comprehensive post-launch support and maintenance services to ensure the ongoing stability, security, and performance of your Strapi application. We understand that a successful launch is just the beginning, and we are committed to providing the necessary resources to keep your platform running smoothly.

Ongoing Support and Maintenance Packages

We offer various support and maintenance packages tailored to your specific needs. These packages include:

- **Regular Security Audits:** Proactive identification and remediation of potential security vulnerabilities.
- **Patch Updates:** Timely application of security patches and software updates to maintain a secure and up-to-date system.
- **Bug Fixes:** Swift resolution of any bugs or issues that may arise.
- **Performance Monitoring:** Continuous monitoring of your Strapi application's performance to identify and address any bottlenecks or performance degradation.
- **Technical Support:** Access to our experienced support team for assistance with any questions or issues.

Service Level Agreement (SLA)

Our standard SLA guarantees a 24-hour response time for critical issues and a 48-hour response time for minor issues. We are dedicated to resolving any issues promptly and efficiently to minimize any disruption to your operations. We are happy to discuss and customize the SLA to meet your specific needs.



Conclusion and Next Steps

This proposal details how Strapi CMS can significantly improve ACME-1's content management and digital experiences. The solution offers seamless integration with your existing systems. Our approach focuses on delivering a flexible, scalable, and efficient content management solution tailored to your specific needs.

Initiating the Project

To move forward, we recommend the following steps:

1. **Review the Proposal:** Carefully examine all sections of this document to ensure it aligns with your expectations.
2. **Sign the Agreement:** If the proposal meets your requirements, please sign the attached agreement.
3. **Schedule a Kickoff Meeting:** Upon signing the agreement, contact our project manager to arrange a kickoff meeting. This meeting will allow us to discuss project timelines, assign roles, and establish communication protocols.

