

Table of Contents

Introduction and Project Overview	3
Project Goals	3
Addressing ACME-1's Needs	3
Key Stakeholders	3
Market and Industry Analysis	4
Emerging Trends	4
Contentful vs. Traditional CMS	4
CMS Market Trends 2020-2025	5
Project Scope and Deliverables	5
Key Deliverables	5
Project Scope	5
Out-of-Scope Items	6
Success Measurement	6
Technical Architecture and Integration	6
Contentful Infrastructure	6
API Integrations	7
Scalability and Security	7
Hosting and Deployment	7
Content Strategy and Modeling	8
Content Modeling	8
Localization and Versioning	8
Content Governance	8
Project Timeline and Milestones	8
Project Phases	8
Gantt Chart	9
Resource Allocation and Team Roles	9
Team Composition and Responsibilities	10
Tools and Technologies	10
Resource Planning	10
Risk Management and Mitigation	11
Risk Identification	11
Risk Monitoring and Management	11
Contingency Plans	11



Conclusion and Next Steps	12
Decisions Required	12
Next Steps	12
Communication Plan	12



Introduction and Project Overview

Docupal Demo, LLC is pleased to present this proposal to Acme, Inc (ACME-1) for Contentful development services. This project aims to address ACME-1's challenges with its current content management system. The existing system causes slow content updates and inconsistent brand messaging across various channels.

Project Goals

The primary goals of this Contentful implementation are to:

- Enhance content agility.
- Improve omnichannel content delivery.
- Streamline content workflows.

Addressing ACME-1's Needs

ACME-1 requires a more efficient content management solution. Contentful will enable faster content updates and ensure consistent brand messaging across all channels. This will improve ACME-1's marketing effectiveness and overall brand presence.

Key Stakeholders

The successful execution of this project depends on collaboration between several key stakeholders:

- Acme Inc. Marketing Team
- Acme Inc. IT Department
- DocuPal Demo, LLC Project Team

Our team is committed to working closely with ACME-1 to ensure a smooth and successful Contentful implementation.



Market and Industry Analysis

The market for content management systems (CMS) is undergoing significant transformation. Several key trends are shaping the future of content creation, delivery, and management. Acme, Inc. can leverage these trends with a Contentful solution.

Emerging Trends

Headless CMS is a prominent trend. This architecture separates the content repository from the presentation layer, granting developers greater flexibility in delivering content across various channels and devices. Contentful's API-first approach aligns perfectly with this trend. It enables ACME-1 to distribute content to websites, mobile apps, and other digital touchpoints.

AI-powered content creation is another emerging area. Artificial intelligence is being used to automate content generation, optimize existing content, and personalize user experiences. Contentful's flexible structure allows for seamless integration with AI tools. This integration can streamline ACME-1's content workflows.

Personalized content experiences are increasingly important. Customers expect content tailored to their individual needs and preferences. A headless CMS like Contentful allows for dynamic content delivery. This means ACME-1 can create personalized experiences based on user data and behavior.

Contentful vs. Traditional CMS

Contentful distinguishes itself from traditional monolithic CMS platforms through its API-first design. Traditional CMS solutions tightly couple content creation and presentation. Contentful's decoupled architecture offers greater agility. It allows developers to use their preferred technologies and frameworks. This flexibility is crucial for organizations like ACME-1 that require omnichannel content delivery. Contentful's adaptability ensures ACME-1 can meet the evolving demands of its customer base across all market segments.



CMS Market Trends 2020-2025

The CMS market has shown consistent growth, driven by the increasing need for businesses to manage and deliver content effectively across multiple channels.

Project Scope and Deliverables

This section outlines the scope, deliverables, and limitations of the Contentful development project for ACME-1. Docupal Demo, LLC will focus on delivering a robust and scalable content management solution using Contentful.

Key Deliverables

We will deliver the following key features and functionalities:

- **Content Modeling:** We will design and implement a flexible content model tailored to ACME-1's specific needs. This includes defining content types, fields, and relationships to ensure content is structured for optimal delivery across various channels.
- **Content Entry:** We will provide a user-friendly interface for content authors to easily create, manage, and publish content within Contentful. This includes configuring editorial workflows and user permissions.
- **Content Delivery API:** We will configure and optimize Contentful's Content Delivery API (CDA) to ensure fast and reliable content delivery to ACME-1's website and other digital platforms.
- **Webhooks:** We will implement webhooks to trigger automated processes and integrations whenever content is created, updated, or deleted in Contentful. This enables real-time content synchronization with external systems.
- **User Management:** We will configure user roles and permissions within Contentful to ensure proper access control and security.

Project Scope

The project scope encompasses the design, development, and configuration of the Contentful platform as described in the key deliverables. We will work closely with ACME-1 to understand their content requirements and ensure the solution meets their specific needs. The project includes necessary training and documentation to empower ACME-1's team to effectively manage the Contentful platform.



Out-of-Scope Items

The following items are explicitly excluded from the project scope:

- **Migration of Non-Content Assets:** The migration of assets that are not considered content, such as software code or application binaries, are outside the scope.
- **Integration with Legacy Systems Outside the Defined Scope:** Integrations with legacy systems that are not explicitly defined and agreed upon will not be included.

Success Measurement

The success of this project will be measured by:

- **Increased Content Velocity:** A demonstrable increase in the speed and efficiency with which content can be created, managed, and published.
- **Improved Website Performance:** Enhanced website loading speeds and overall performance due to optimized content delivery from Contentful.
- **Higher Customer Engagement:** Increased customer engagement metrics, such as page views, time on site, and conversion rates, as a result of improved content experiences.

Technical Architecture and Integration

This section outlines the technical architecture and integration strategy for ACME-1's Contentful implementation. Our approach leverages Contentful's robust features and integrates seamlessly with ACME-1's existing systems.

Contentful Infrastructure

Contentful's cloud-based infrastructure provides a scalable and secure foundation for content management. We will utilize Contentful's Content Delivery Network (CDN) to ensure optimal performance and availability for ACME-1's content across all channels. This CDN strategy guarantees fast loading times and a consistent user experience, regardless of geographic location.



API Integrations

Our solution incorporates integrations with ACME-1's critical business systems. Specifically, we will integrate with ACME-1's CRM, marketing automation platform, and analytics tools. These integrations will enable:

- **CRM Integration:** Seamlessly synchronize customer data with content personalization strategies.
- **Marketing Automation Platform Integration:** Trigger content-driven campaigns based on user behavior and preferences.
- **Analytics Tools Integration:** Track content performance and gain insights into user engagement.

These integrations will be implemented using Contentful's APIs, ensuring secure and efficient data exchange. We will adhere to industry-standard security practices to protect ACME-1's data.

Scalability and Security

Contentful's architecture is designed for scalability. The platform can handle increasing content volumes and traffic without performance degradation. Contentful also adheres to industry-standard security practices, including data encryption and access controls, to protect sensitive information.

Hosting and Deployment

Contentful's CDN will host and deliver ACME-1's content. This approach offers several advantages, including:

- **High Availability:** Ensures content is always accessible to users.
- **Global Reach:** Distributes content across multiple geographic locations for faster loading times.
- **Enhanced Security:** Protects content from unauthorized access and cyber threats.

We will work closely with ACME-1's IT team to ensure a smooth and seamless deployment process.



Content Strategy and Modeling

Our content strategy for ACME-1 centers on a structured approach within Contentful. We will define content types that mirror ACME-1's key content needs. These include Articles, Blog Posts, Product Descriptions, and Customer Testimonials.

Content Modeling

We will establish clear relationships between content types. This ensures content is easily discoverable and interconnected. Content modeling will be meticulously planned. It will support efficient content creation and management.

Localization and Versioning

Contentful's built-in localization features will manage multilingual content effectively. Versioning control offers a robust mechanism for tracking changes. It also provides the ability to revert to previous content states when necessary.

Content Governance

We will implement content governance guidelines. These guidelines encompass defined content approval workflows. They also include editorial guidelines and brand standards. This ensures content quality and consistency across all channels. The governance model ensures that all content aligns with ACME-1's brand voice and objectives.

Project Timeline and Milestones

The project will be completed in six phases. Each phase has specific goals and deadlines. We will use weekly progress reports, daily stand-up meetings, and project management software to track progress.

Project Phases

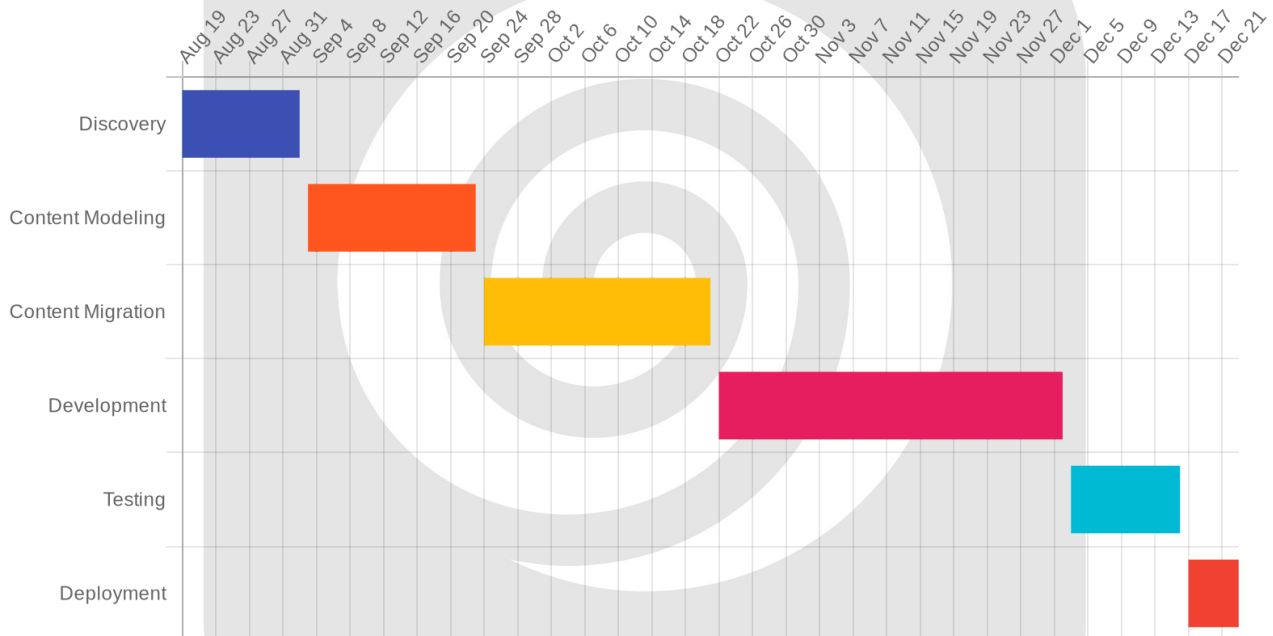
1. **Discovery (2 weeks):** This initial phase focuses on understanding ACME-1's needs and goals.



2. **Content Modeling (3 weeks):** We will design the content structures within Contentful. This phase must be completed before content migration can begin.
3. **Content Migration (4 weeks):** Existing content will be migrated into the new Contentful structure.
4. **Development (6 weeks):** This phase involves building and configuring the necessary components and integrations.
5. **Testing (2 weeks):** Thorough testing will be conducted to ensure the solution meets ACME-1's requirements.
6. **Deployment (1 week):** The final phase involves deploying the solution to the production environment.

Gantt Chart

The following Gantt chart illustrates the project timeline and key deadlines:



Resource Allocation and Team Roles

Docupal Demo, LLC will assemble a dedicated team to ensure the successful execution of ACME-1's Contentful development project. Our team's structure is designed for clear communication, efficient workflow, and high-quality deliverables.



Team Composition and Responsibilities

The core team consists of the following roles:

- **Project Manager:** Oversees the entire project lifecycle, manages timelines, facilitates communication, and ensures adherence to budget and scope.
- **Content Architect:** Designs the content model within Contentful, defining content types, fields, and relationships to optimize content structure and delivery for ACME-1's needs.
- **Front-End Developer:** Develops the presentation layer of the website or application, utilizing JavaScript and React to create user-friendly interfaces that consume content from Contentful.
- **Back-End Developer:** Handles the server-side logic, integrations, and data processing required to support the Contentful implementation, ensuring seamless content delivery.

Tools and Technologies

Our team will leverage the following tools and technologies throughout the project:

- Contentful CLI
- JavaScript
- React
- Git
- Jira

Resource Planning

We have allocated the necessary resources to meet ACME-1's project requirements and timeline. This includes dedicated development hours, project management oversight, and quality assurance testing. We will also provide Contentful training for ACME-1's content team, empowering them to effectively manage and maintain their content within the Contentful platform.

Risk Management and Mitigation

We recognize that development projects carry inherent risks. This section outlines potential risks associated with the Contentful development for ACME-1 and our strategies to mitigate them.



Risk Identification

We have identified the following key risk areas:

- **Data Migration Challenges:** Moving existing content to Contentful may present unforeseen difficulties, including data incompatibility or corruption.
- **Integration Complexities:** Integrating Contentful with ACME-1's existing systems could encounter unforeseen technical hurdles.
- **Scope Creep:** The project scope may expand beyond the initial agreement, leading to delays and increased costs.

Risk Monitoring and Management

Docupal Demo, LLC will actively monitor and manage these risks through the following measures:

- **Risk Assessment Meetings:** We will hold regular meetings to identify, assess, and prioritize potential risks.
- **Risk Mitigation Plans:** For each identified risk, we will develop and implement a detailed mitigation plan. These plans will outline specific actions to reduce the likelihood and impact of the risk.
- **Regular Monitoring:** We will continuously monitor the project's progress and key risk indicators to identify potential issues early on.

Contingency Plans

To address potential problems, we have established the following contingency plans:

- **Alternative Migration Strategies:** We will develop alternative data migration strategies to address potential data incompatibility issues. This includes data transformation techniques and manual migration procedures.
- **Backup Content Sources:** We will maintain backup copies of all content to ensure no data loss occurs during the migration process.
- **Extended Timelines:** We have built some buffer into the project timeline to accommodate potential delays caused by unforeseen issues.

We are committed to proactively managing risks to ensure the successful completion of the Contentful development project for ACME-1.



Conclusion and Next Steps

Decisions Required

To ensure a smooth project progression, we require timely decisions from your stakeholders on the following:

- Content model approval
- Design template sign-off
- Go-live approval

Next Steps

Following your approval of this proposal, the immediate next steps are:

1. A kick-off meeting will be scheduled with our development team to align on project goals and timelines.
2. We will commence the Discovery phase, which involves a deep dive into your existing content and workflows.

Communication Plan

We are committed to maintaining open and transparent communication throughout the project. Our communication strategy includes:

- Weekly status meetings to provide updates on progress and address any questions.
- A dedicated Slack channel for quick communication and collaboration.
- Regular email updates to keep you informed of key milestones and deliverables.

