

Table of Contents

Introduction	3
Purpose of this Proposal	3
Key Objectives	3
Stakeholders	3
Project Scope and Objectives	4
Scope of Work	4
Project Objectives	4
Technical Architecture	4
Contentful APIs and Endpoints	5
Data Flow and Integration	5
System Architecture Layers	5
Implementation Plan and Timeline	6
Project Phases	6
Timeline	6
Gantt Chart	7
Cost Estimation and Budget	7
Project Cost Breakdown	7
Ongoing Operational Costs	8
Benefits and Use Cases	8
Enhanced Content Management	8
Improved Content Delivery	8
Key Benefits	9
Use Cases	9
Risks and Mitigation Strategies	9
Technical Risks	9
Security and Compliance Risks	9
Monitoring and Management	10
Team Roles and Responsibilities	10
Core Team	10
Communication	10
Support and Maintenance Plan	11
Ongoing Support	11
Updates and Change Management	11



Service Level Agreement (SLA)	11
Conclusion and Next Steps	11
Approvals	11
Decision Timeline	12
Post-Approval Actions	12
Initial Steps	12



Introduction

This document presents a proposal from Docupal Demo, LLC to Acme, Inc (ACME-1) for a Contentful integration project. Docupal Demo, LLC is a United States based company located at 23 Main St, Anytown, CA 90210. All financial transactions will be conducted in USD, Docupal Demo, LLC's base currency.

Purpose of this Proposal

The primary aim of this integration is to streamline ACME-1's content management processes and significantly enhance its digital experiences. This will be achieved by leveraging Contentful's robust capabilities.

Key Objectives

This project addresses critical business needs, including:

- **Improved Content Creation Efficiency:** Empowering content creators with a more efficient and user-friendly platform.
- **Reduced Time-to-Market:** Accelerating the delivery of content to market, providing a competitive edge.
- **Enhanced Personalization:** Enabling more personalized and engaging digital experiences for ACME-1's audience.

Stakeholders

The success of this Contentful integration is important to several key stakeholders within ACME-1, including the Marketing team, Content creators, Web developers, and the IT department. This proposal outlines a clear path to achieving these objectives.

Project Scope and Objectives

This document outlines the scope and objectives for the Contentful integration project for ACME-1. Docupal Demo, LLC will manage the integration. The project aims to streamline ACME-1's content management processes. It will improve content delivery across multiple platforms.



Scope of Work

The project encompasses the following key areas:

- **Platform Integration:** Contentful will integrate with ACME-1's existing website, mobile app, e-commerce platform, and marketing automation system.
- **Key Feature Implementation:** We will implement content modeling, workflow automation, API integration, and content preview functionalities within Contentful.
- **Content Migration:** We will migrate existing content from ACME-1's current system to Contentful.

Project Objectives

The primary objectives of this Contentful integration are:

- **Increase Website Traffic:** Improve SEO and content discoverability. We aim for a measurable increase in organic website traffic.
- **Improve Conversion Rates:** Deliver personalized and engaging content. This should lead to higher conversion rates on the e-commerce platform and other channels.
- **Reduce Content Creation Time:** Streamline content workflows. This will empower ACME-1's team to create and publish content more efficiently.
- **Enhance Customer Satisfaction:** Deliver consistent and relevant content. This will improve the overall customer experience.
- **Measurement:** Success will be measured through website analytics, conversion tracking, time tracking for content creation, and customer satisfaction surveys.

Technical Architecture

Our proposed technical architecture leverages Contentful's robust API ecosystem to seamlessly integrate content across ACME-1's digital touchpoints. This architecture ensures content consistency, streamlines content management, and enables personalized content experiences.

Contentful APIs and Endpoints

We will utilize the following Contentful APIs:



- **Content Delivery API (CDA):** This read-only API will deliver content to ACME-1's website, mobile app, e-commerce platform, and marketing automation system. It ensures fast and reliable content delivery.
- **Content Management API (CMA):** This API will allow ACME-1's content creators to manage content within Contentful.
- **GraphQL API:** This API provides a flexible and efficient way to query content from Contentful, allowing ACME-1 to retrieve only the data needed for specific use cases.

Data Flow and Integration

Content created and managed within Contentful will be distributed to various channels through the APIs.

The data flow will follow these steps:

1. Content creators use Contentful's interface to create and update content.
2. The CMA stores the content within Contentful.
3. When a user requests content from ACME-1's website, mobile app, e-commerce platform, or marketing automation system, a request is sent to Contentful's CDA or GraphQL API.
4. Contentful delivers the requested content.
5. The receiving system renders the content for the user.

System Architecture Layers

The system architecture consists of distinct layers, each with specific responsibilities.

Implementation Plan and Timeline

Docupal Demo, LLC will manage the Contentful integration for ACME-1 through a phased approach. This ensures a structured and efficient process, minimizing disruption and maximizing the value of the new content management system. The project includes four key phases: Content Model Design, API Integration, Content Migration, and Testing & Deployment.



Project Phases

1. **Content Model Design (2 weeks):** Our content architect will work with ACME-1 to design the structure of your content within Contentful. This includes defining content types, fields, and relationships to ensure content is well-organized and easily managed.
2. **API Integration (4 weeks):** Our developers will integrate Contentful's API with ACME-1's existing systems and applications. This will enable seamless content delivery to all relevant channels.
3. **Content Migration (3 weeks):** The content team will migrate existing content from ACME-1's current system into Contentful. We will ensure that all content is properly formatted and structured according to the new content model.
4. **Testing and Deployment (1 week):** Our QA testers will thoroughly test the integrated system to ensure it meets ACME-1's requirements and functions flawlessly. Once testing is complete, we will deploy the system to production.

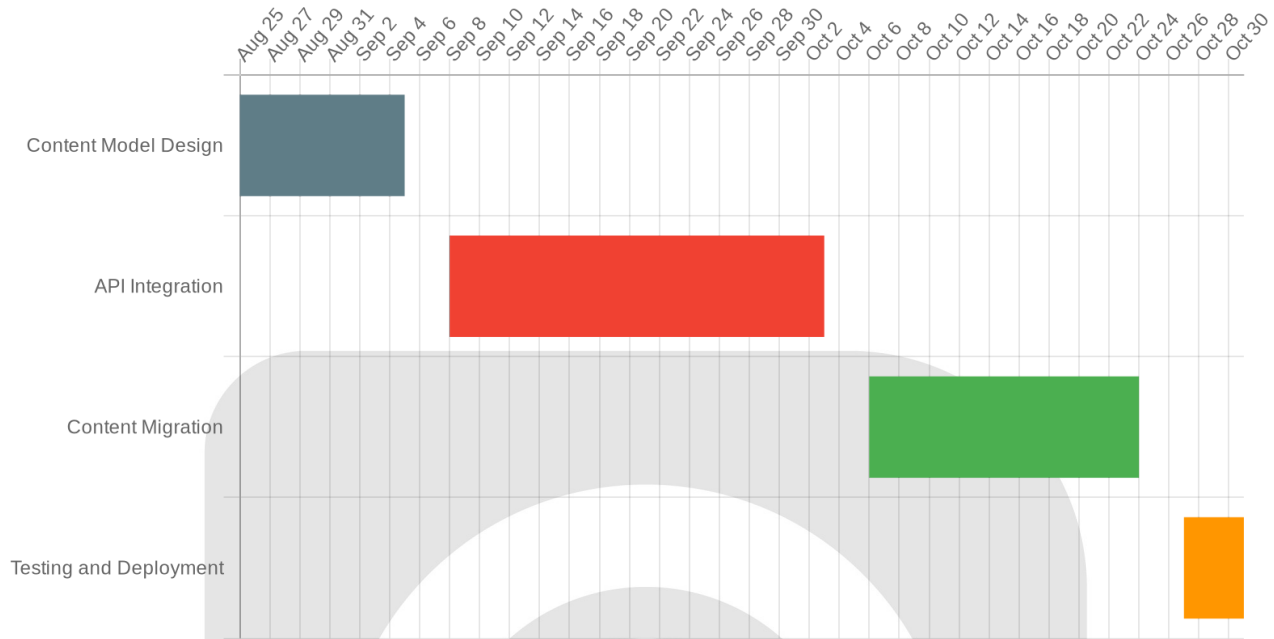
Timeline

The total estimated time for the Contentful integration is 10 weeks. The project is scheduled to start on 2025-08-25 and complete on 2025-10-31.

Phase	Start Date	End Date	Resources Needed	Duration
Content Model Design	2025-08-25	2025-09-05	Content Architect	2 weeks
API Integration	2025-09-08	2025-10-03	Developers	4 weeks
Content Migration	2025-10-06	2025-10-24	Content Team	3 weeks
Testing and Deployment	2025-10-27	2025-10-31	QA Testers	1 week



Gantt Chart



Cost Estimation and Budget

This section details the estimated costs for the Contentful integration project for ACME-1. The budget includes expenses for development, content migration, Contentful subscription, and ongoing maintenance. We have also incorporated a contingency to address unforeseen issues.

Project Cost Breakdown

The primary cost drivers are development hours, the extent of content migration, and Contentful subscription fees.

Item	Estimated Cost (USD)
Development & Configuration	15,000
Content Migration	8,000
Contentful Subscription (Year 1)	7,000
Contingency (10%)	3,000



Item	Estimated Cost (USD)
Total Project Cost	33,000

Ongoing Operational Costs

After the initial integration, ACME-1 will incur ongoing operational costs. These include Contentful subscription fees, as well as costs for ongoing maintenance and support.

- **Contentful Subscription:** Estimated at \$7,000 per year, but varies based on ACME-1's specific needs.
- **Maintenance and Support:** Ongoing support and maintenance are estimated at \$2,000 annually. This covers minor updates, bug fixes, and technical assistance.

Benefits and Use Cases

Integrating Contentful will bring significant improvements to ACME-1's content operations. These enhancements span content creation, delivery, and overall customer engagement.

Enhanced Content Management

Contentful's centralized platform streamlines content creation and management. Your marketing team and content creators will experience faster content updates. This efficiency translates to more timely and relevant information for your audience. The integration also promotes improved content quality by providing a structured environment for creation and review.

Improved Content Delivery

Contentful's API-first approach ensures seamless content delivery across all channels. Web developers can easily access and distribute content, resulting in a consistent user experience. This centralized system simplifies updates and reduces the risk of inconsistencies across different platforms.



Key Benefits

- **Faster Content Updates:** Accelerate content publishing cycles.
- **Improved Content Quality:** Ensure consistent and accurate messaging.
- **Enhanced Customer Engagement:** Deliver timely and relevant content to your audience.

Use Cases

- **Website Content Management:** Easily update website copy, images, and videos.
- **Mobile App Content:** Deliver consistent content across all mobile platforms.
- **Marketing Campaigns:** Quickly launch and manage content for marketing initiatives.
- **Personalized Experiences:** Tailor content to specific customer segments.

Risks and Mitigation Strategies

Several risks could impact the Contentful integration project. We have identified key areas of concern and outlined mitigation strategies to address them.

Technical Risks

Data migration presents a potential challenge. Complex data structures and large volumes of content could lead to delays or data integrity issues. To mitigate this, we will conduct thorough data profiling and cleansing before migration. We will also implement rigorous data validation procedures post-migration. API integration issues between Contentful and ACME-1's existing systems are another concern. We will use thorough testing and monitoring to address such issues. We will also establish clear communication channels with ACME-1's IT team. We will address content model adjustments by collaborating closely with ACME-1's content team.

Security and Compliance Risks

Adherence to data privacy regulations, such as GDPR and CCPA, is critical. We will ensure that the integration complies with all relevant regulations. This includes implementing appropriate data encryption and access controls. Regular security



audits will be conducted. These audits will identify and address potential vulnerabilities.

Monitoring and Management

We will proactively manage risks through regular monitoring of API performance. We will also track project timelines and budgets closely. Any deviations will be addressed immediately. We will use project management tools and techniques. This ensures transparency and accountability. We will maintain open communication with ACME-1 throughout the integration process.

Team Roles and Responsibilities

Our team structure is designed to ensure a smooth and efficient Contentful integration for ACME-1. Key roles have been defined to cover all essential aspects of the project.

Core Team

The core team consists of the following members:

- **Project Manager:** Responsible for the overall execution of the project, ensuring it stays on schedule and within budget.
- **Content Architect:** Designs the content model within Contentful, ensuring it meets ACME-1's specific needs.
- **Lead Developer:** Manages the API integration between Contentful and ACME-1's existing systems.
- **QA Tester:** Responsible for testing the integration and ensuring the quality of the final product.

Communication

We will maintain clear and consistent communication throughout the project. This will involve daily stand-up meetings to address immediate concerns, weekly progress reports to keep ACME-1 informed, and dedicated communication channels (e.g., Slack) for quick questions and updates. This approach promotes transparency and collaboration, ensuring the project aligns with ACME-1's expectations.



Support and Maintenance Plan

Docupal Demo, LLC will provide comprehensive support and maintenance services to ACME-1 following the Contentful integration. This ensures the ongoing success and stability of your content operations.

Ongoing Support

We offer continuous support for content creators, assisting with any questions or issues they may encounter while using the Contentful platform. This includes troubleshooting, best practice guidance, and assistance with content modeling. We also provide API maintenance to ensure seamless data flow between Contentful and other integrated systems. Bug fixes will be promptly addressed to maintain system integrity.

Updates and Change Management

Regular updates will be applied to Contentful and all integrated systems. These updates will include security patches, new features, and performance improvements. All updates will be managed through a defined change management process to minimize disruption and ensure a smooth transition. This process includes testing in a staging environment before deployment to production.

Service Level Agreement (SLA)

Our services are underpinned by a Service Level Agreement (SLA), detailing our commitment to uptime, response times, and resolution targets. This agreement provides clarity and accountability, ensuring you receive the support you need in a timely manner.

Conclusion and Next Steps

Approvals

To move forward, we require approvals from ACME-1's Marketing Director, IT Director, and Legal Counsel.



Decision Timeline

We anticipate a decision within two weeks.

Post-Approval Actions

Initial Steps

Following approval, our first actions will be:

- A kick-off meeting with key stakeholders.
- Finalization of the content model design.
- Setup of the development environment.

These steps will ensure a smooth and efficient integration process.

