

Table of Contents

Executive Summary	3
Goals and Benefits	3
Recommended Approach	3
Current Environment Assessment	3
Contentful CMS Setup	3
Limitations and Pain Points	4
System Performance Metrics	4
Market and Technology Trends Analysis	4
Key Market Trends	4
Emerging Technologies	5
CMS Adoption Rate	5
Proposed Upgrade Details	5
Contentful Version Upgrade	5
Contentful Compose Implementation	6
Technical Specifications	6
API and Architecture Improvements	6
Security Enhancements	7
Integration and Workflow Enhancements	7
Implementation Plan and Timeline	7
Upgrade Phases	7
Resources	8
Dependencies	8
Risk Mitigation	8
Projected Timeline	8
Cost-Benefit and ROI Analysis	9
Upgrade Costs	9
Efficiency Gains and Savings	10
Return on Investment (ROI)	10
Risk Assessment and Mitigation Strategies	11
Potential Risks	11
Mitigation Strategies	11
User Experience and Training Plan	12
Enhanced User Experience	12



Training and Support 12

Change Management 13

Conclusion and Recommendations 13

 Key Benefits 13

 Next Steps 13

 Measuring Success 14

Appendices and References 14

 Supporting Documentation 14

 Reusable Content Blocks 14

 Docupal Demo, LLC Information 14



Executive Summary

This document proposes an update/upgrade to Acme, Inc's Contentful platform. Docupal Demo, LLC will execute the project. The primary drivers for this upgrade are to boost performance, strengthen security, and unlock the latest Contentful features.

Goals and Benefits

This initiative aims to provide ACME-1 with increased efficiency and streamlined content management. A successful upgrade will also reduce operational costs.

Recommended Approach

We advise a phased upgrade strategy. Each phase includes comprehensive testing to ensure stability and minimize disruption. This approach allows for controlled implementation and validation at every step.

Current Environment Assessment

ACME-1 currently utilizes Contentful as its primary CMS, managing a substantial portion of its digital content. Our assessment reveals several key aspects of the existing environment.

Contentful CMS Setup

ACME-1's Contentful setup includes multiple content types, managing website content, blog posts, and marketing materials. The current architecture relies on a mix of manual content entry and automated workflows for content publishing. The system integrates with ACME-1's website and marketing automation platform.

Limitations and Pain Points

Several limitations and pain points have been identified within the current Contentful environment:



- **Performance Bottlenecks:** The system experiences occasional performance slowdowns, particularly during peak traffic periods, impacting content delivery speeds.
- **Content Approval Workflow Inefficiencies:** The current content approval workflow lacks automation, leading to delays in content publishing and potential errors.
- **Limited Content Personalization Capabilities:** ACME-1's ability to deliver personalized content experiences is constrained by the current Contentful setup.
- **Lack of Advanced Analytics:** The existing analytics capabilities offer limited insights into content performance and user engagement.
- **Integration Challenges:** Integrating Contentful with other marketing and sales tools poses ongoing challenges, hindering data synchronization and workflow automation.

System Performance Metrics

The following chart illustrates the system's performance metrics and issue frequency over the past 12 months.

Market and Technology Trends Analysis

The content management system (CMS) landscape is rapidly evolving. Several key market trends are driving the need for adaptable and scalable content solutions. These trends directly influence ACME-1's content strategy and the imperative for a Contentful upgrade.

Key Market Trends

- **Headless CMS Adoption:** Businesses increasingly adopt headless CMS solutions. This approach decouples the content repository from the presentation layer, offering greater flexibility in content delivery across various channels.
- **AI-Powered Content Creation:** Artificial intelligence (AI) is transforming content creation. AI tools can assist with content generation, optimization, and personalization, improving efficiency and content relevance.
- **Personalization:** Customers expect personalized experiences. CMS platforms must support robust personalization capabilities to deliver tailored content based on user behavior, preferences, and context.



Emerging Technologies

Several emerging technologies can enhance content management and delivery within Contentful:

- **AI-Driven Content Optimization:** AI algorithms can analyze content performance and suggest improvements for SEO, readability, and engagement.
- **Serverless Functions:** Serverless functions enable developers to execute code without managing servers. This approach simplifies content workflows and allows for dynamic content manipulation.
- **GraphQL APIs:** GraphQL offers a flexible and efficient way to query content. It enables developers to request specific data, reducing over-fetching and improving performance.

CMS Adoption Rate

Proposed Upgrade Details

This section outlines the specifics of the proposed Contentful upgrade and the implementation of Contentful Compose for ACME-1. The upgrade focuses on enhancing content delivery speed, bolstering security, and streamlining editorial workflows.

Contentful Version Upgrade

We propose upgrading your current Contentful instance to version 7. This upgrade introduces several key improvements:

- **Faster Content Delivery:** v7 includes optimized content delivery APIs, resulting in reduced latency and improved website and application performance for end-users.
- **Enhanced User Authentication:** The upgrade incorporates stronger authentication protocols, mitigating potential security vulnerabilities and safeguarding your content assets.
- **Improved Data Encryption:** v7 provides enhanced data encryption methods, ensuring the confidentiality and integrity of your content.



Contentful Compose Implementation

In addition to the core Contentful upgrade, we recommend implementing Contentful Compose. This addition will significantly improve ACME-1's content creation and management processes by:

- **Streamlined Editorial Workflows:** Compose offers a more intuitive and user-friendly interface for content creators, simplifying the content creation process and reducing the learning curve for new users.
- **Improved Integration with Marketing Automation Tools:** Compose facilitates seamless integration with your existing marketing automation platforms, enabling more efficient content distribution and campaign management.

Technical Specifications

The upgrade to Contentful v7 involves migrating your existing content models and entries to the new version. We will conduct thorough testing to ensure compatibility and minimize any potential disruptions. The implementation of Contentful Compose will require configuring the application within your Contentful environment and integrating it with your current workflows.

API and Architecture Improvements

Contentful v7 features an upgraded GraphQL Content API offering improved performance and stability. Also, the upgrade introduces a new and improved UI, which makes content modeling and content entry creation easier and faster. The architecture is also improved to handle larger content sets and higher traffic loads.

Security Enhancements

The upgrade to Contentful v7 provides security enhancements, including updated authentication protocols and improved data encryption methods. This ensures that your content is protected from unauthorized access and data breaches.

Integration and Workflow Enhancements

The implementation of Contentful Compose will enhance your integrations and workflows by streamlining editorial processes and improving integration with marketing automation tools. This allows for more efficient content distribution and



campaign management.

Implementation Plan and Timeline

Docupal Demo, LLC will manage the Contentful update/upgrade for ACME-1 using a phased approach. This ensures a smooth transition with minimal disruption. The key phases are Planning, Development, Testing, and Deployment.

Upgrade Phases

1. **Planning (2025-08-19 to 2025-08-22):** We will define the project scope, gather requirements, and create a detailed project plan. This includes resource allocation and risk assessment.
2. **Development (2025-08-25 to 2025-09-05):** Our Development Team will perform the Contentful update/upgrade in a dedicated staging environment. This environment mirrors ACME-1's production setup.
3. **Testing (2025-09-08 to 2025-09-12):** Thorough testing will be conducted in the staging environment. The Content Team and IT Support will validate functionality and data integrity.
4. **Deployment (2025-09-15 to 2025-09-19):** Following successful testing, the update/upgrade will be deployed to the production environment. A rollback plan will be in place.

Resources

- **Content Team (ACME-1):** Providing content expertise and participating in testing.
- **Development Team (Docupal Demo, LLC):** Executing the update/upgrade and resolving technical issues.
- **IT Support (ACME-1):** Assisting with infrastructure and environment setup.
- **Docupal Demo, LLC:** Project management, technical guidance, and overall execution.

Dependencies

- **Content Freeze:** A temporary content freeze will be required during the deployment phase to prevent data conflicts. This is scheduled for 2025-09-15.



- **Data Backup:** A full data backup will be performed before the upgrade to ensure data recovery in case of unforeseen issues. This is scheduled for 2025-09-12.

Risk Mitigation

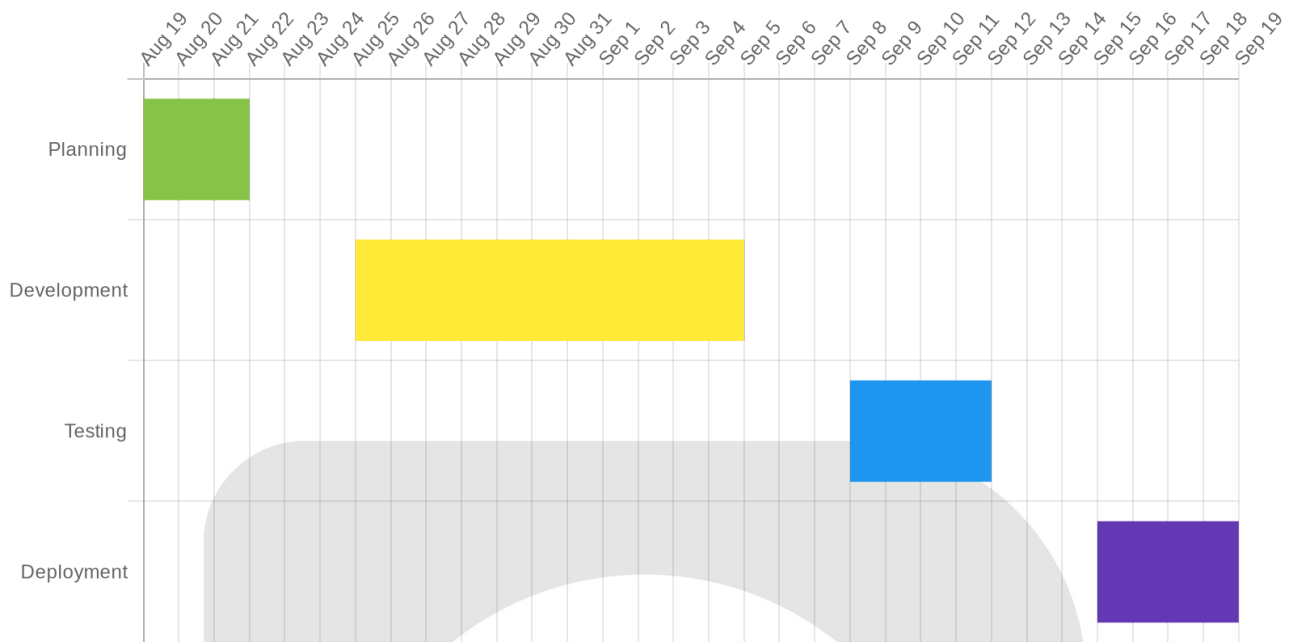
We acknowledge potential risks such as data loss, system downtime, and integration conflicts. Mitigation strategies include:

- **Regular Backups:** Performing frequent backups throughout the process.
- **Staging Environment Testing:** Rigorous testing in a non-production environment.
- **Rollback Plan:** A detailed plan to revert to the previous version if necessary.

Projected Timeline

Task	Start Date	End Date
Planning	2025-08-19	2025-08-22
Development	2025-08-25	2025-09-05
Testing	2025-09-08	2025-09-12
Data Backup	2025-09-12	2025-09-12
Content Freeze	2025-09-15	2025-09-19
Deployment	2025-09-15	2025-09-19





Cost-Benefit and ROI Analysis

This section details the costs and benefits associated with upgrading ACME-1's Contentful instance. It also provides a return on investment (ROI) analysis, demonstrating the financial advantages of the upgrade.

Upgrade Costs

The upgrade involves both direct and indirect costs. Direct costs include Contentful subscription fees and development hours for implementation. Indirect costs consist of staff training and potential downtime during the upgrade process. The table below summarizes these costs:

Cost Category	Description	Estimated Cost (USD)
Direct Costs		
Subscription Fees	Increased fees associated with the upgraded Contentful plan	\$XX,XXX
Development Hours	Cost of developer time for implementing and configuring upgrade	\$YY,YYY

Cost Category	Description	Estimated Cost (USD)
Indirect Costs		
Training	Staff training on the new features and functionalities	\$ZZ,ZZZ
Potential Downtime	Estimated cost of any service interruptions during the upgrade	\$AA,AAA
Total Estimated Cost		\$BB,BBB

Note: Specific costs are estimates and will be refined upon further assessment.

Efficiency Gains and Savings

The Contentful upgrade is projected to yield significant efficiency gains and cost savings. These benefits primarily stem from reduced content creation time and lower infrastructure costs. Specific improvements include:

- **Reduced Content Creation Time:** Streamlined workflows and enhanced features enable faster content creation.
- **Lower Infrastructure Costs:** Optimized performance and resource utilization reduce infrastructure expenses.

Return on Investment (ROI)

We expect ACME-1 to realize a return on its investment within 12 months of the upgrade. The quantifiable benefits, derived from efficiency gains and cost savings, will offset the initial investment.

The following chart shows the projected costs versus benefits over a 3-year period:

Note: ROI calculations are based on projected savings and may vary based on actual usage and performance. The values CC, DDD, EE are derived from the projected savings from "Reduced Content Creation Time" and "Lower Infrastructure Costs" over the three years. These values will be provided in a future iteration of this document once the estimates have been finalized.



Risk Assessment and Mitigation Strategies

This section outlines potential risks associated with the Contentful update/upgrade for ACME-1 and details our proposed mitigation strategies. Docupal Demo, LLC is committed to minimizing disruption and ensuring a smooth transition.

Potential Risks

Several technical and operational risks could arise during the Contentful upgrade. These include:

- **Integration Failures:** Existing integrations with other systems may be disrupted or cease to function correctly after the upgrade.
- **Compatibility Issues:** The upgraded Contentful version may not be fully compatible with existing ACME-1 templates, components, or custom code.
- **Unforeseen Bugs:** New bugs or issues could emerge in the upgraded Contentful environment, impacting content creation and delivery.
- **Downtime:** The upgrade process may require some downtime, potentially affecting website availability.
- **Data Loss:** Although unlikely, there is a minimal risk of data loss during the upgrade.

Mitigation Strategies

To address these potential risks, Docupal Demo, LLC will implement the following mitigation strategies:

- **Staging Environment:** A staging environment mirroring ACME-1's production environment will be set up. The upgrade will be performed and thoroughly tested in this environment before being applied to the live system.
- **Regular Backups:** Complete backups of ACME-1's Contentful data will be performed before, during, and after the upgrade. This ensures data can be restored in case of any unforeseen issues.
- **Rollback Plan:** A detailed rollback plan will be prepared, outlining the steps required to revert to the previous Contentful version if necessary.



- **Extended Support Coverage:** Docupal Demo, LLC will provide extended support coverage during and immediately after the upgrade to promptly address any issues that may arise.
- **Compatibility Testing:** Rigorous compatibility testing will be conducted in the staging environment to identify and resolve any conflicts between the upgraded Contentful version and ACME-1's existing infrastructure.
- **Manual Data Restoration:** In the unlikely event of data loss that cannot be recovered through automated backups, Docupal Demo, LLC will provide manual data restoration services.

User Experience and Training Plan

This section details the user experience (UX) enhancements and the training plan associated with the Contentful update/upgrade for ACME-1. Our goal is to ensure a smooth transition and maximize user adoption of the new features.

Enhanced User Experience

The Contentful update will deliver a significantly improved user experience. Key improvements include:

- **Content Editing Interface:** A redesigned interface for more intuitive content creation and editing.
- **Content Preview:** Enhanced content preview capabilities for real-time visualization of content changes.
- **Mobile-Friendly Design:** A fully responsive design that ensures optimal usability across all devices.

These UX improvements will empower ACME-1's content teams to create and manage content more efficiently.

Training and Support

Docupal Demo, LLC will provide comprehensive training resources to support ACME-1's teams during and after the Contentful update. These resources include:

- **Online Tutorials:** A library of self-paced online tutorials covering all aspects of the updated Contentful platform.



- **Webinars:** Interactive webinars led by Docupal Demo, LLC experts, providing in-depth training and Q&A sessions.
- **On-Site Training:** On-site training sessions tailored to ACME-1's specific needs, delivered by our experienced trainers.

Change Management

A proactive change management approach will be implemented to ensure a seamless transition. This includes:

- **Communication Plan:** Regular updates and announcements to keep all stakeholders informed.
- **Stakeholder Engagement:** Active engagement with key stakeholders to gather feedback and address concerns.
- **Phased Rollout:** A phased rollout approach to minimize disruption and allow for thorough testing and refinement.

Conclusion and Recommendations

The Contentful upgrade offers ACME-1 a path to a modern, efficient, and secure content management system. This modernization will streamline content workflows and improve overall team productivity.

Key Benefits

The primary advantages of upgrading include:

- **Enhanced Security:** Protection against evolving cyber threats.
- **Improved Efficiency:** Streamlined content creation and delivery.
- **Modernized CMS:** Access to the latest features and functionalities.

Next Steps

To ensure a smooth transition, we recommend the following immediate actions:

1. **Schedule a Kickoff Meeting:** Align stakeholders and define project scope.
2. **Perform a Detailed Audit:** Analyze the current Contentful setup.

Measuring Success

Post-upgrade success will be measured by:

- **Content Velocity:** Increased speed of content creation and deployment.
- **User Satisfaction:** Positive feedback from content creators and users.
- **Cost Savings:** Reduction in operational expenses related to content management.

By following these recommendations, ACME-1 can maximize the benefits of the Contentful upgrade and achieve its content management goals.

Appendices and References

Supporting Documentation

This proposal references the following supporting documents:

- Contentful Documentation
- Project Plan

These documents provide detailed technical specifications and project timelines. They are available upon request.

Reusable Content Blocks

The following content blocks are available for reuse in other proposals:

- Executive Summary use_block: true
- Cost Breakdown use_block: true

These blocks ensure consistency and efficiency in proposal generation.

Docupal Demo, LLC Information

Docupal Demo, LLC is a United States-based company located at 23 Main St, Anytown, CA 90210. Our base currency is USD. use_block: true

