

# Table of Contents

<b>Introduction and Project Overview</b>	<b>3</b>
Project Objectives	3
Business Drivers	3
Expected Benefits	3
Key Stakeholders and Sponsors	4
<b>Current Content and System Assessment</b>	<b>4</b>
Existing CMS and Content Types	4
Pain Points	4
Content Inventory	5
<b>Migration Strategy and Approach</b>	<b>5</b>
Migration Methodology	5
Migration Phases	6
Tools and Automation	6
Content Mapping and Validation	6
Team Roles	6
Project Timeline	7
<b>Technical Architecture and Integration</b>	<b>7</b>
Contentful Architecture	7
API Integrations	8
Customization and Extensions	8
Security and Compliance	8
<b>Content Modeling and Template Migration</b>	<b>8</b>
Content Model Optimization	9
Template Migration Strategy	9
<b>Risk Assessment and Mitigation</b>	<b>10</b>
Technical Risks	10
Operational Risks	10
Business Risks	10
Monitoring and Control	11
Contingency Plans	11
<b>Project Governance and Stakeholder Management</b>	<b>11</b>
Governance Structure	11
Roles and Responsibilities	11



Communication Plan .....	11
Change Management .....	12
<b>Training and Support Plan .....</b>	<b>12</b>
Training Materials .....	12
Ongoing Support .....	12
<b>Conclusion and Next Steps .....</b>	<b>13</b>
Key Milestones .....	13
Required Approvals and Inputs .....	13
Project Tracking and Reporting .....	13
Immediate Next Steps .....	13



# Introduction and Project Overview

Acme, Inc (ACME-1) is partnering with Docupal Demo, LLC to migrate its content management system to Contentful. This initiative aims to modernize ACME-1's content infrastructure. It will address key business challenges related to content agility, omnichannel delivery, and workflow efficiency.

## Project Objectives

The primary objectives of this Contentful migration are to:

- Improve content agility, allowing for faster content creation and updates.
- Enhance omnichannel delivery, ensuring consistent brand messaging across all channels.
- Streamline content workflows, reducing content publishing cycles.

## Business Drivers

ACME-1 currently faces several challenges that this migration will address. These include:

- **Inefficient Content Updates:** Current systems make content updates slow and cumbersome.
- **Inconsistent Brand Messaging:** Lack of a centralized content repository leads to inconsistencies across different channels.
- **Slow Content Publishing Cycles:** Lengthy approval processes and outdated technology hinder timely content delivery.

## Expected Benefits

By migrating to Contentful, ACME-1 anticipates the following benefits:

- Increased efficiency in content creation and management.
- Improved consistency in brand messaging across all channels.
- Faster content publishing cycles, enabling quicker time-to-market.
- Enhanced ability to deliver personalized content experiences.
- Reduction in operational costs associated with content management.



## Key Stakeholders and Sponsors

The success of this project relies on the collaboration of several key individuals:

- **Key Stakeholders:** Marketing Director, IT Manager
- **Sponsors:** CEO, VP of Marketing

## Current Content and System Assessment

ACME-1 currently relies on WordPress as its primary CMS. Our assessment focuses on understanding the current system's capabilities, content structure, and associated pain points to ensure a smooth transition to Contentful.

### Existing CMS and Content Types

The existing infrastructure centers around a WordPress CMS. The main content types are:

- Blog posts
- Product descriptions
- Landing pages

### Pain Points

ACME-1 has identified several key challenges with its current WordPress setup:

- **Content Relationship Management:** Managing relationships between different content pieces is proving difficult.
- **API Limitations:** The current system's API capabilities are restricted, hindering integrations with other services and platforms.
- **Website Performance:** Slow loading times are negatively impacting user experience.

### Content Inventory

We have compiled an inventory of ACME-1's content requiring migration:

- All blog posts will be migrated to Contentful.
- All product descriptions will be migrated.



- All landing pages will be migrated.

Old press releases (older than 5 years) will be archived and will not be migrated to Contentful. The following chart depicts the volume of content by type:

## Migration Strategy and Approach

We will use a phased migration approach to move your content from your current system to Contentful. This approach reduces risk and allows for continuous content updates during the migration.

### Migration Methodology

Our migration methodology includes these key steps:

1. **Assessment and Planning:** We will analyze your existing content structure and plan the new structure in Contentful.
2. **Content Modeling:** We will create content models in Contentful that match your content types.
3. **Content Mapping:** We will map existing content fields to the new Contentful content models.
4. **Migration Scripting:** We will develop custom scripts to transform and migrate the content.
5. **Content Migration:** We will migrate content in phases, starting with a subset of content.
6. **Validation and Testing:** We will validate the migrated content and test its functionality.
7. **Deployment:** We will deploy the migrated content to your Contentful environment.

### Migration Phases

The migration will occur in distinct phases:

- **Phase 1: Setup and Configuration:** Setting up the Contentful environment and configuring the migration tools.
- **Phase 2: Content Model Creation:** Defining content models in Contentful based on the content audit.



- **Phase 3: Script Development:** Developing and testing custom migration scripts.
- **Phase 4: Pilot Migration:** Migrating a small set of content for testing and validation.
- **Phase 5: Full Migration:** Migrating the remaining content in batches.
- **Phase 6: Content Validation:** Validating all migrated content for accuracy and completeness.

## Tools and Automation

We will use a combination of tools and automation to ensure an efficient migration:

- **Contentful Migration API:** We will use the Contentful Migration API to programmatically create and update content.
- **Custom Scripts:** We will develop custom scripts for data transformation and content mapping.
- **Third-Party Migration Tool (Optional):** We may use a third-party migration tool to streamline the migration process.
- **Spreadsheets:** We will use spreadsheets to manage content mapping and track migration progress.

## Content Mapping and Validation

We will use spreadsheets and automated scripts for content mapping. Manual review and automated testing will be used for validation.

## Team Roles

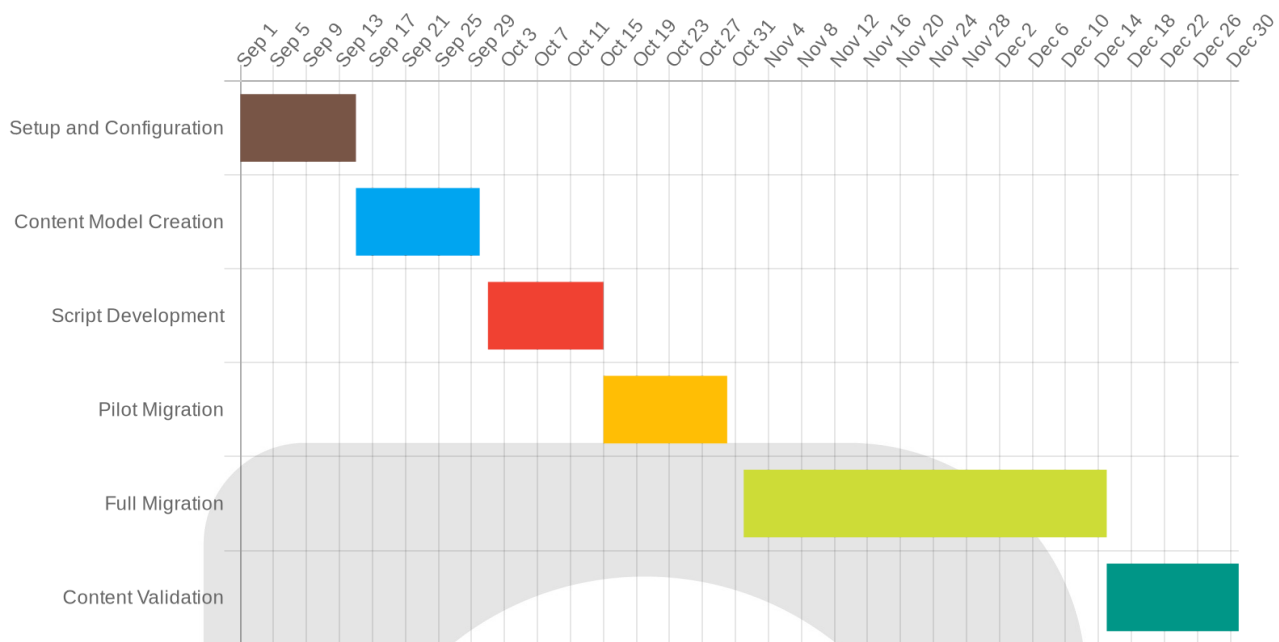
Our team will consist of:

- **Project Manager:** Oversees the entire migration process.
- **Content Architect:** Designs the content models in Contentful.
- **Migration Specialist:** Develops and executes the migration scripts.
- **Quality Assurance Tester:** Validates the migrated content.

## Project Timeline

Below is a high-level project timeline, illustrating key milestones and phases.





## Technical Architecture and Integration

This section outlines the technical architecture and integration strategy for ACME-1's Contentful migration. Our approach ensures a seamless transition and optimal performance within your existing ecosystem.

### Contentful Architecture

We will establish a Contentful architecture tailored to ACME-1's content needs. This includes defining content models that reflect your content types, such as articles, product pages, and marketing campaigns. We will structure these models for reusability and scalability. The architecture will also incorporate environments for development, staging, and production, allowing for thorough testing before content is published.

### API Integrations

Contentful will integrate with ACME-1's existing systems through APIs. Specifically, we will integrate with ACME-1's e-commerce platform to deliver product information directly from Contentful. This ensures consistency and reduces manual

updates. We will also utilize webhooks to connect Contentful with ACME-1's marketing automation tools. This enables automated workflows, such as triggering email campaigns when new content is published.

## Customization and Extensions

To enhance ACME-1's content editing experience, we will implement custom widgets within the Contentful interface. These widgets will provide streamlined access to frequently used functions and data. We will also develop extensions to integrate Contentful with specific marketing tools used by ACME-1. These extensions will further automate content-related tasks and improve marketing efficiency.

## Security and Compliance

Security and compliance are paramount. We will ensure that ACME-1's Contentful implementation meets GDPR requirements. This includes implementing data encryption at rest and in transit to protect sensitive information. We will also configure role-based access control within Contentful, limiting access to content and functionality based on user roles. This ensures that only authorized personnel can create, edit, and publish content. Docupal Demo, LLC will make sure that all data is handled in compliance with industry best practices and regulatory requirements.

# Content Modeling and Template Migration

This section outlines our approach to content modeling within Contentful and the migration of your existing templates. We will transform your current WordPress templates into optimized Contentful content types and associated display components.

## Content Model Optimization

We will analyze your existing content structure to identify opportunities for optimization within Contentful. This includes:

- Consolidating similar content types to reduce redundancy and improve content consistency.



- Optimizing field structures within each content type for better data management and retrieval.
- Implementing content referencing to establish relationships between content entries and enable reusability.

Our goal is to create a content model that is both efficient and scalable, allowing you to manage your content effectively in Contentful.

## Template Migration Strategy

Our template migration strategy focuses on a component-based approach. Each WordPress template will be deconstructed into its core components. These components will then be mapped to Contentful content types and display components. Reusable blocks within your existing templates will be implemented using Contentful's content referencing feature, ensuring consistency and maintainability across your content. This approach allows for a modular and flexible content architecture within Contentful.

The migration process will involve:

1. **Analysis:** Thorough review of existing WordPress templates and content structure.
2. **Content Type Definition:** Defining Contentful content types based on template analysis and optimization opportunities.
3. **Component Mapping:** Mapping template components to Contentful content types and display components.
4. **Content Migration:** Migrating content from WordPress to Contentful, ensuring data integrity and accuracy.
5. **Testing:** Rigorous testing of migrated content and display components to ensure proper functionality and rendering.

## Risk Assessment and Mitigation

Migrating ACME-1's content to Contentful involves inherent risks. We've identified key areas of concern and developed mitigation strategies to minimize potential disruptions.



## Technical Risks

A primary technical risk is data loss during the migration process. To address this, Docupal Demo, LLC will implement comprehensive data backups before, during, and after the migration. We will also develop a detailed rollback plan to revert to the previous CMS in case of critical issues. Downtime during the final switchover is another concern. We will schedule the switchover during off-peak hours to minimize impact and conduct thorough testing in a staging environment to ensure a smooth transition.

## Operational Risks

Operationally, ACME-1 staff may face challenges adapting to the new Contentful environment. Docupal Demo, LLC will provide comprehensive training and ongoing support to facilitate a smooth transition. Workflow disruptions are also possible. We will work closely with ACME-1 to understand existing workflows and configure Contentful to support them effectively.

## Business Risks

Potential business risks include delays in content publishing and a negative impact on SEO. To mitigate publishing delays, we will prioritize the migration of critical content and provide training on Contentful's content creation and publishing workflows. We will also implement SEO best practices during the migration to maintain search engine rankings.

## Monitoring and Control

We will actively monitor these risks using a risk register, which will track identified risks, their likelihood, impact, and mitigation strategies. Regular status meetings with ACME-1 will provide updates on progress and address any emerging concerns.

## Contingency Plans

Our contingency plans include the rollback plan mentioned earlier, extended support from the Docupal Demo, LLC migration team, and a detailed communication plan to manage user expectations throughout the migration process. This plan will ensure all stakeholders are informed of progress, potential issues, and resolutions.

# Project Governance and Stakeholder Management

This section outlines the governance structure for the Contentful migration project. It also details how we will manage communication and change with ACME-1 stakeholders.

## Governance Structure

A steering committee will govern the project. This committee includes representatives from both Docupal Demo, LLC and ACME-1. The committee will oversee project progress, address risks, and make key decisions.

## Roles and Responsibilities

Docupal Demo, LLC will provide project management, technical expertise, and migration execution. ACME-1 will provide subject matter experts, content owners, and internal communication support. Clear roles and responsibilities ensure accountability and smooth project flow.

## Communication Plan

Effective communication is vital for project success. We will conduct regular status meetings to keep stakeholders informed of progress, risks, and upcoming milestones. We will also provide email updates for broader communication. A dedicated Slack channel will facilitate quick questions and answers. This multi-channel approach will ensure everyone stays connected.

## Change Management

We understand that change can be challenging. To ease the transition, we will offer training sessions on the new Contentful environment. We will also provide user guides for quick reference. A support hotline will be available to address any questions or issues. This comprehensive approach minimizes disruption and promotes user adoption.



# Training and Support Plan

DocuPal Demo, LLC will provide comprehensive training and support to ACME-1 to ensure a smooth transition to Contentful. Our plan addresses the needs of content editors, marketers, and web developers.

## Training Materials

We will deliver a range of training materials to suit different learning styles:

- **User Guides:** Detailed written documentation covering all aspects of Contentful.
- **Video Tutorials:** Step-by-step video guides demonstrating key tasks and workflows.
- **In-Person Training Sessions:** Interactive sessions led by DocuPal Demo, LLC experts. These sessions will offer hands-on experience and address specific questions.

## Ongoing Support

Following the go-live date, we will provide dedicated support for one month. This support will be handled by a specialized support team from DocuPal Demo, LLC. After this initial period, ACME-1's internal IT department will assume responsibility for ongoing support. DocuPal Demo, LLC will provide necessary documentation and knowledge transfer to enable their team to effectively manage the Contentful platform. We are committed to empowering ACME-1 with the skills and resources needed to thrive on Contentful.

## Conclusion and Next Steps

This proposal outlines our approach to migrating ACME-1's content to Contentful. We are confident that our expertise and methodology will ensure a smooth and successful transition.



## Key Milestones

Several critical milestones are ahead. These include obtaining content model design approval, developing migration scripts, and completing the first content batch migration. Success hinges on hitting these marks.

## Required Approvals and Inputs

Stakeholder involvement is crucial. We need prompt approval of the content model and sign-off on the migration plan. Input on the training materials will also be essential for user adoption.

## Project Tracking and Reporting

We will use a project management tool to meticulously track progress. Weekly reports will keep all stakeholders informed of our advancements and any potential roadblocks. These reports will provide clear visibility into the migration's status.

## Immediate Next Steps

The immediate next step is to schedule a kickoff meeting. This meeting will finalize the project timeline and assign responsibilities. We will then begin working on the content model design, which requires your prompt review and approval to keep the project on schedule.

