

Table of Contents

Introduction	3
Project Overview	3
Objectives	3
Market Analysis and Trends	3
Technical Specifications and Requirements	5
API Endpoints	5
Data Formats and Protocols	5
Security and Authentication	6
Data Models	6
Error Handling	6
Integration Protocols	6
Rate Limiting	7
Project Scope and Deliverables	7
Scope	7
Key Deliverables	7
Project Milestones and Timeline	8
Exclusions	8
Implementation Plan and Timeline	8
Project Phases	8
Timeline	9
Monitoring and Reporting	9
Security and Compliance	10
Security Protocols	10
Data Protection	10
Regulatory Compliance	10
Quality Assurance and Testing	11
Testing Types	11
QA Tools and Frameworks	11
Bug Tracking	11
Team and Responsibilities	12
Project Team	12
Key Personnel	12
Point of Contact	12



Cost Estimates and Budget	12
Cost Breakdown by Phase	13
Contingency	13
Conclusion and Next Steps	13
Approvals and Decisions	13
Immediate Actions	13



Introduction

Docupal Demo, LLC is pleased to present this proposal to Acme, Inc (ACME-1) for the development of a robust Contentful API solution. Our team understands ACME-1's need for a scalable and efficient content delivery system. This proposal outlines our approach to building that system using Contentful.

Project Overview

This project aims to create a streamlined content management workflow for ACME-1's digital platforms. The Contentful API will enhance ACME-1's ability to deliver personalized content. Improved customer engagement and streamlined content management workflows are key objectives. These objectives directly support revenue growth and operational efficiency.

Objectives

The primary goal is to develop a Contentful API that meets the needs of ACME-1's marketing team, content creators, IT department, and executive leadership. The API will empower these stakeholders with the tools needed to manage and deliver content effectively.

Market Analysis and Trends

The demand for headless Content Management Systems (CMS) and their associated APIs is experiencing significant growth. Businesses increasingly require flexible content delivery solutions that can support diverse channels and digital experiences. This trend is driven by the need to provide personalized and engaging content across websites, mobile apps, and other emerging platforms.

Contentful is a leading headless CMS, well-regarded for its developer-friendly APIs and flexible content management capabilities. This positions Contentful as a strong solution for companies seeking to modernize their content infrastructure and improve their digital agility.



Year	Adoption Rate (Projected)
2020	15%
2021	25%
2022	40%
2023	55%
2024	70%
2025	85%

Several factors contribute to the rising adoption of headless CMS solutions:

- **Omnichannel Content Delivery:** Businesses need to deliver content across a growing number of channels, including websites, mobile apps, IoT devices, and digital signage. Headless CMS solutions enable efficient content delivery to any channel through APIs.
- **Personalization:** Customers expect personalized experiences. Headless CMS platforms allow businesses to tailor content to individual users based on their preferences, behavior, and context.
- **Improved Developer Experience:** Headless CMS platforms provide developers with the tools and flexibility they need to build modern digital experiences. API-first architecture enables developers to use their preferred technologies and frameworks.
- **Scalability and Performance:** Headless CMS solutions are designed to scale to meet the demands of high-traffic websites and applications. Decoupling the content repository from the presentation layer improves performance and reduces complexity.
- **Integration Capabilities:** Headless CMS platforms integrate with a wide range of other systems, such as e-commerce platforms, marketing automation tools, and CRM systems. This allows businesses to create seamless and connected customer experiences.

Technical Specifications and Requirements

This section outlines the technical specifications and requirements for the Contentful API development project for ACME-1. Docupal Demo, LLC will adhere to these guidelines to ensure a robust, secure, and efficient integration with



Contentful.

API Endpoints

The following API endpoints will be developed to manage content within Contentful:

- **Content Retrieval Endpoints:** These endpoints will allow ACME-1 to retrieve content from Contentful based on specified criteria, such as content type, ID, or search parameters. This will include endpoints for fetching single entries and collections of entries.
- **Content Creation Endpoints:** These endpoints will enable ACME-1 to create new content entries within Contentful. The endpoints will support various content types and will include validation to ensure data integrity.
- **Content Update Endpoints:** These endpoints will provide the functionality to modify existing content entries in Contentful. They will support partial updates, allowing specific fields to be updated without affecting other parts of the content.
- **Content Deletion Endpoints:** These endpoints will allow ACME-1 to remove content entries from Contentful. Appropriate safeguards, such as confirmation steps, will be implemented to prevent accidental data loss.

Data Formats and Protocols

All data exchanged between ACME-1's systems and the Contentful API will be formatted as JSON (JavaScript Object Notation). This widely supported format ensures compatibility and ease of integration.

The API will utilize RESTful principles, leveraging standard HTTP methods (GET, POST, PUT, DELETE) for interacting with resources. The communication will be secured using HTTPS protocol to encrypt data in transit and protect against eavesdropping and tampering.

Security and Authentication

Security is a paramount concern. The API will implement OAuth 2.0 for authentication. This industry-standard protocol provides a secure and Delegated approach to authorizing access to Contentful resources. ACME-1 will be able to grant



granular permissions to applications, limiting their access to only the necessary data and functionality.

Docupal Demo, LLC will also ensure that the API adheres to GDPR (General Data Protection Regulation) compliance. This includes implementing measures to protect personal data, providing transparency about data processing activities, and enabling ACME-1 to exercise its rights under GDPR, such as data access, rectification, and erasure.

Data Models

The data models used in the API will reflect the content structures defined within Contentful. Docupal Demo, LLC will work with ACME-1 to understand their specific content types and fields and design the API to efficiently handle these data structures. The models will be well-documented and versioned to ensure maintainability and compatibility.

Error Handling

The API will implement robust error handling to provide informative feedback to ACME-1's systems in case of issues. Error responses will include descriptive error codes and messages to facilitate debugging and troubleshooting. The API will also implement logging to track errors and identify potential problems.

Integration Protocols

The API will be designed to be easily integrated with ACME-1's existing systems and workflows. Docupal Demo, LLC will provide clear and comprehensive documentation, including code samples and examples, to assist ACME-1's developers in integrating with the API.

The API will support standard content delivery mechanisms. This ensures optimal performance and scalability.

Rate Limiting

To ensure fair usage and prevent abuse, the API will implement rate limiting. This will restrict the number of requests that can be made within a specific time period. The rate limits will be set at a level that is sufficient for ACME-1's anticipated usage



while protecting the overall stability of the system. Docupal Demo, LLC will work with ACME-1 to determine appropriate rate limits and provide mechanisms for monitoring usage.

Project Scope and Deliverables

This section details the scope, deliverables, milestones, and exclusions for the Contentful API development project for ACME-1. Docupal Demo, LLC will deliver a fully functional and well-documented Contentful API, integrated with ACME-1's current systems.

Scope

The project encompasses the design, development, testing, and deployment of custom API endpoints using Contentful. These endpoints will allow ACME-1 to manage and distribute content efficiently across their digital platforms. We will configure the API to meet ACME-1's specific requirements.

Key Deliverables

- **Functional API Endpoints:** We will build and deploy a suite of API endpoints tailored to ACME-1's content management needs. These endpoints will allow for content creation, retrieval, updating, and deletion.
- **Comprehensive API Documentation:** Docupal Demo, LLC will provide detailed documentation for all developed API endpoints. This documentation will include endpoint descriptions, request/response formats, authentication methods, and code samples.
- **System Integration:** We will integrate the new Contentful API with ACME-1's existing systems. This integration will ensure seamless data flow and content synchronization across all platforms.

Project Milestones and Timeline

The project is divided into four phases, with an estimated total duration of eleven weeks.

Phase	Description	Duration
1: API Design	API specifications and design	2 weeks



Phase	Description	Duration
2: Development	API endpoint implementation	6 weeks
3: Testing	Comprehensive testing and QA	2 weeks
4: Deployment	API deployment and configuration	1 week

Exclusions

This project specifically excludes integration with any third-party services that are not explicitly defined within the project scope. Any additional integrations requested outside of the original scope will require a separate agreement and may impact the project timeline and cost.

Implementation Plan and Timeline

Our implementation will follow a phased approach to ensure a smooth and efficient development process for the Contentful API integration. The project is broken down into four major phases: API Design, Development, Testing, and Deployment.

Project Phases

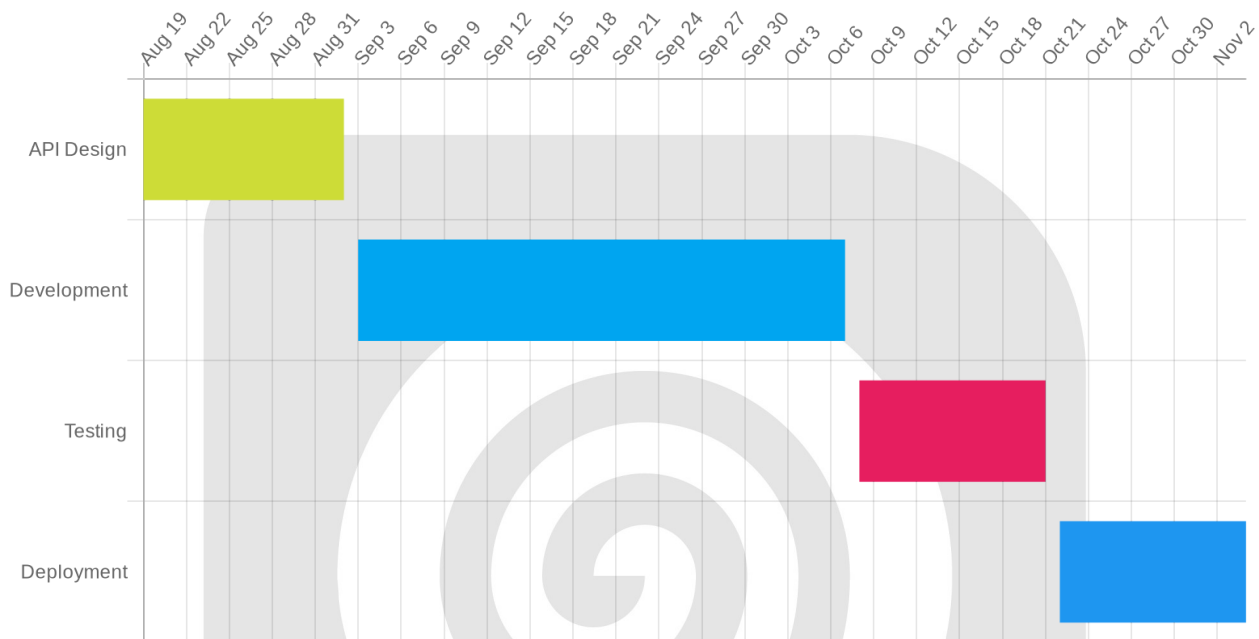
- 1. API Design:** This initial phase focuses on defining the API specifications based on ACME-1's requirements. We will create detailed documentation outlining endpoints, data structures, and authentication methods.
- 2. Development:** Based on the approved API design, our development team will build the necessary API endpoints and integrate them with Contentful.
- 3. Testing:** Thorough testing will be conducted to ensure the API functions correctly, securely, and efficiently. This includes unit tests, integration tests, and performance tests.
- 4. Deployment:** The final phase involves deploying the API to a production environment and providing ongoing support and maintenance.

Timeline

The following table outlines the key deadlines for each phase of the project:



Phase	Completion Date
API Design	2025-09-02
Development	2025-10-07
Testing	2025-10-21
Final Deployment	2025-11-04



Monitoring and Reporting

We will closely monitor project progress and provide regular updates to ACME-1. Our monitoring and reporting strategy includes:

- **Weekly Progress Reports:** Providing a summary of completed tasks, ongoing activities, and any potential roadblocks.
- **Bi-Weekly Stakeholder Meetings:** Conducting meetings with ACME-1 stakeholders to discuss progress, address concerns, and make necessary adjustments to the project plan.
- **Continuous API Performance Monitoring:** Implementing tools and processes to continuously monitor the API's performance, identify any issues, and ensure optimal operation.



Security and Compliance

Docupal Demo, LLC understands the importance of security and compliance for ACME-1. We are committed to ensuring the confidentiality, integrity, and availability of your data. Our approach to security is multi-layered and incorporates industry best practices.

Security Protocols

We will adhere to the OWASP guidelines throughout the API development process. This includes secure coding practices, regular vulnerability assessments, and penetration testing. We will implement appropriate authentication and authorization mechanisms to control access to the API and its resources. All data transmitted between ACME-1 and the Contentful API will be encrypted using industry-standard protocols.

Data Protection

ACME-1's user data will be protected through encryption both in transit and at rest. We will implement strict access controls to limit who can access sensitive information. Regular security audits will be conducted to identify and address potential vulnerabilities. We will also implement data loss prevention (DLP) measures to prevent unauthorized disclosure of data.

Regulatory Compliance

Docupal Demo, LLC recognizes that ACME-1 must comply with certain regulations, including GDPR and CCPA. Our API development will be designed to support ACME-1's compliance efforts. This includes providing mechanisms for data subject access requests (DSARs), data deletion, and data portability. We will also ensure that data processing activities are transparent and comply with the principles of data minimization and purpose limitation. We will provide the necessary documentation and support to demonstrate compliance to relevant authorities.



Quality Assurance and Testing

Docupal Demo, LLC will ensure the quality of the Contentful API development for ACME-1 through rigorous testing methodologies. We will use a combination of automated and manual testing to identify and resolve any issues.

Testing Types

Our testing strategy incorporates three key types of testing:

- **Unit Tests:** These tests verify the functionality of individual components and functions.
- **Integration Tests:** These tests confirm that different parts of the system work together correctly.
- **User Acceptance Testing (UAT):** ACME-1 team members will perform UAT to ensure the API meets your specific needs and expectations.

QA Tools and Frameworks

To facilitate our QA process, we will use the following tools and frameworks:

- **Postman:** For API testing and validation.
- **JUnit:** For writing and running unit tests.
- **Selenium:** For automated user interface testing.

Bug Tracking

All identified bugs and issues will be meticulously tracked using Jira. This ensures transparency and efficient resolution throughout the development lifecycle. We will provide ACME-1 with access to the Jira project for real-time monitoring of progress and issue resolution.



Team and Responsibilities

Project Team

Docupal Demo, LLC will provide a dedicated team to ensure the successful development of the Contentful API for ACME-1. Our team's structure promotes clear communication and efficient execution throughout the project.

Key Personnel

- **Lead Developer:** [Team Member 1] will oversee the technical aspects of the project. This includes architecture, code quality, and adherence to best practices.
- **API Developer:** [Team Member 2] will focus on developing and implementing the Contentful API. They will ensure seamless integration with ACME-1's existing systems.
- **QA Tester:** [Team Member 3] will rigorously test the API. This testing will ensure functionality, performance, and security meet the required standards.

Point of Contact

[Name] will serve as the primary point of contact for ACME-1. [Name] can be reached via email at [Email] or by phone at [Phone Number]. [Name] will be responsible for project updates, addressing concerns, and facilitating communication between Docupal Demo, LLC and ACME-1.

Cost Estimates and Budget

Docupal Demo, LLC will deliver the Contentful API development project for a total estimated cost of \$50,000. This budget covers all phases, from initial design to final deployment.

Cost Breakdown by Phase

The project budget is allocated across four key phases. Each phase has a specific cost associated with the work needed.



Phase	Estimated Cost (USD)
API Design	\$5,000
Development	\$30,000
Testing	\$10,000
Deployment	\$5,000

Contingency

We have included a contingency allowance to address unforeseen issues. This is set at 10% of the total project cost. The contingency fund is \$5,000. This ensures we can handle unexpected challenges without impacting the project's scope or timeline.

Conclusion and Next Steps

This Contentful API development will empower ACME-1 to manage and deliver content more efficiently. The expected result is an improved customer experience and streamlined operational workflows.

Approvals and Decisions

To move forward, we require your approval on the project scope, proposed budget, and outlined timeline. Your prompt attention to these items will ensure the project stays on track.

Immediate Actions

The immediate next step involves scheduling a kick-off meeting. This meeting will include key stakeholders from both Docupal Demo, LLC and ACME-1. During the meeting, we will confirm project goals, establish communication channels, and introduce the project team. Following the kick-off meeting, we will begin the API design phase, working closely with your team to ensure the API meets your specific needs and requirements.

