

Table of Contents

Executive Summary	3
Objectives	3
Key Benefits	3
Strategic Alignment	3
Introduction and Background	4
Current Content Management Challenges	4
Business Needs and Sanity Integration	4
Market and Technology Landscape	5
CMS Market Trends	5
Technology Considerations	5
Proposed Sanity Integration Architecture	5
Core Components	6
Integration Points	6
Data Flow	6
Technical Architecture Diagram	7
Content Modeling and Management Strategy	7
Content Schema	7
Reusable Blocks	7
Editorial Workflows	8
Governance and Best Practices	8
Implementation Plan and Timeline	8
Project Phases & Milestones	8
Resource Allocation	10
Project Timeline (Gantt Chart)	10
Cost-Benefit Analysis	10
Cost Analysis	10
Benefit Analysis	11
Return on Investment (ROI)	12
Risk Analysis and Mitigation	12
Technical Risks	12
Operational Risks	13
Contingency Plans	13
User Training and Support	13



Training Resources	13
Encouraging User Adoption	14
Post-Implementation Support	14
Conclusion and Next Steps	14
Recommendations	14
Required Approvals	14
Immediate Next Steps	15



Executive Summary

DocuPal Demo, LLC proposes a Sanity integration for Acme, Inc., offering a modern content management solution. This initiative aims to transform ACME-1's content operations, driving efficiency and enhancing digital experiences.

Objectives

The primary goal is to equip ACME-1 with a flexible and scalable content management system. This will empower their team to create, manage, and deliver content more effectively across all channels.

Key Benefits

Integrating Sanity will bring several key benefits to ACME-1:

- **Increased Content Velocity:** Streamline content creation and publishing processes.
- **Improved Omnichannel Delivery:** Ensure consistent and optimized content across all platforms.
- **Enhanced Personalization Capabilities:** Deliver tailored content experiences to customers.
- **Reduced Content Management Costs:** Optimize workflows and resource allocation.

Strategic Alignment

This integration directly supports ACME-1's digital transformation strategy. By adopting an API-driven content platform, ACME-1 can achieve greater agility, foster innovation, and focus on customer-centricity. The integration enables ACME-1 to adapt quickly to changing market demands and customer expectations.



Introduction and Background

This proposal outlines how Docupal Demo, LLC can help Acme, Inc. improve its content management capabilities. We propose integrating Sanity, a modern content management system, to address current limitations and support Acme, Inc.'s evolving business needs.

Current Content Management Challenges

Acme, Inc. currently relies on a legacy CMS, Sitecore, to manage its content. While Sitecore has served Acme, Inc. for some time, several pain points have emerged that hinder agility and efficiency. These include:

- **Limited Content Reuse:** The existing system makes it difficult to efficiently reuse content across different channels and platforms.
- **Slow Publishing Cycles:** The content publishing process is often slow and cumbersome, delaying time-to-market for critical updates and campaigns.
- **Multi-Channel Delivery Difficulties:** Delivering content to new and emerging channels is challenging, restricting Acme, Inc.'s reach.
- **High Maintenance Costs:** Maintaining the legacy CMS incurs significant costs, diverting resources from strategic initiatives.

Business Needs and Sanity Integration

Acme, Inc. requires a CMS that supports structured content modeling for greater flexibility and reusability. Flexible content workflows are essential to streamline the content creation, review, and approval processes. The new CMS must also facilitate multi-channel content delivery, enabling Acme, Inc. to reach its audience across various platforms. Robust API accessibility is needed for seamless integration with existing marketing and e-commerce systems, specifically Marketo and Shopify. Sanity, with its headless architecture and flexible content modeling capabilities, directly addresses these needs. By adopting Sanity, Acme, Inc. can overcome the limitations of its current CMS, improve content velocity, reduce costs, and enhance its overall digital presence.



Market and Technology Landscape

The content management system (CMS) market is rapidly evolving. Businesses need flexible and scalable solutions to manage their content effectively. Traditional CMS platforms like Sitecore and WordPress are facing challenges. They often lack the agility and customization options required for modern digital experiences. Headless CMS solutions are gaining traction. These platforms, including Sanity, offer a more decoupled approach. This allows for greater flexibility in content delivery across various channels.

CMS Market Trends

The demand for personalized and omnichannel content experiences drives market trends. Companies seek solutions that can adapt to changing customer expectations. Headless CMS adoption is rising as businesses prioritize API-driven content delivery. This architecture enables developers to use their preferred front-end frameworks. It also integrates content with various applications and devices. Sanity is well-positioned in this market due to its focus on flexibility, scalability, and developer experience. Its structured content approach allows ACME-1 to create and deliver content efficiently across all touchpoints.

Technology Considerations

Successful Sanity integration depends on several key technologies. API design is crucial for seamless data exchange. Data modeling ensures content is structured and easily accessible. Front-end development frameworks like React and Vue.js play a significant role. They are used to build user interfaces that consume content from Sanity. Cloud infrastructure provides the necessary resources for hosting and scaling the CMS. DevOps practices streamline the development and deployment process. These technologies will be central to the integration process for ACME-1. Docupal Demo, LLC possesses the expertise to manage these technological aspects.

Proposed Sanity Integration Architecture

This section details how we propose to integrate Sanity into ACME-1's existing systems. The architecture focuses on leveraging Sanity's capabilities as a central content hub, ensuring seamless content delivery across all channels.



Core Components

The core of the integration revolves around these key components:

- **Sanity Studio:** This is where ACME-1's content creators will author and manage all content. It provides a customizable and intuitive interface for content modeling and creation.
- **Content Lake:** Sanity's Content Lake serves as the single source of truth for all content. It's a fully managed, highly available, and globally distributed data store.
- **GraphQL API:** This API allows ACME-1 to query and retrieve content from the Content Lake for use in websites, applications, and other channels.

Integration Points

Sanity will integrate with ACME-1's existing systems through APIs and webhooks. Specifically, we will focus on integrating with:

- **Marketo:** This integration will enable personalized content delivery within marketing campaigns. Content created and managed in Sanity can be dynamically pulled into Marketo emails and landing pages.
- **Shopify:** This integration will streamline product content management. Product descriptions, images, and other relevant content can be managed in Sanity and automatically synchronized with Shopify.

Data Flow

The data flow within the integrated architecture will follow these steps:

1. **Content Creation:** Content creators use Sanity Studio to create and manage content.
2. **Content Storage:** Content is stored in Sanity's Content Lake.
3. **Content Delivery:** The GraphQL API is used to query and retrieve content from the Content Lake.
4. **Channel Delivery:** Content is delivered to various channels, including websites, applications, Marketo, and Shopify.
5. **Workflow Automation:** Webhooks trigger workflows in other systems when content is created, updated, or deleted in Sanity. For example, publishing content in Sanity could trigger an update to the website or a notification to the marketing team.

Technical Architecture Diagram

This diagram visually represents the components and data flow described above. Sanity Studio is the entry point for content creation, which then flows to the Content Lake for storage. The GraphQL API facilitates content retrieval for delivery to various channels like websites, applications, Marketo, and Shopify.

Content Modeling and Management Strategy

This section details our approach to content modeling and management within Sanity. We aim to create a flexible, scalable, and efficient system for ACME-1's diverse content needs.

Content Schema

We will design a content schema that reflects ACME-1's content types. This includes website content, blog posts, product descriptions, marketing materials, documentation, and customer support articles. Each content type will have a defined structure with specific fields and validation rules. For example, a "Product" schema will include fields for name, description, images, specifications, pricing, and related products. These schemas will be designed to be modular and extensible, allowing for future content types and updates.

Reusable Blocks

Sanity's portable text and block content features will be used to create reusable blocks. These blocks allow editors to build complex layouts and content structures with ease. Examples include call-to-action blocks, image galleries, and quote blocks. These blocks can be used across different content types, ensuring consistency and reducing content duplication. We will establish a library of pre-designed blocks that align with ACME-1's brand guidelines.



Editorial Workflows

We will implement editorial workflows for content creation, review, approval, and publishing. This will involve defining roles and permissions for different users, such as content creators, editors, and publishers. Sanity's workflow features will be configured to support these roles and ensure that content goes through the necessary stages before being published. Notifications and alerts will be set up to keep users informed of their tasks.

Governance and Best Practices

We will establish content governance practices to maintain content quality and consistency. This includes guidelines for content creation, style guides, and naming conventions. Regular content audits will be conducted to identify outdated or inaccurate content. We will provide training to ACME-1's content team on Sanity best practices and content governance procedures. This ensures that the content remains accurate, relevant, and aligned with ACME-1's business goals.

Implementation Plan and Timeline

Our Sanity integration will occur over a structured 12-week period. This plan includes key milestones and deliverables to ensure a smooth and successful transition for ACME-1.

Project Phases & Milestones

We will execute the project in distinct phases, each with specific milestones and deliverables.

Phase 1: Project Kickoff and Requirements Gathering (Week 1)

- **Milestone:** Project Kickoff
- **Activities:** We will formally start the project, aligning stakeholders and defining project scope.
- **Deliverable:** Project Plan.

Phase 2: Sanity Schema Design and Content Modeling (Weeks 2-3)

- **Milestone:** Content Model Finalized



- **Activities:** Our content strategists will design the Sanity schema and content models based on ACME-1's requirements.
- **Deliverable:** Content Model Documentation.

Phase 3: Sanity Studio Configuration and Customization (Weeks 4-5)

- **Milestone:** Studio Configured
- **Activities:** Our team will configure and customize the Sanity Studio to meet ACME-1's specific content management needs.
- **Deliverable:** Configured Sanity Studio.

Phase 4: API Integration (Weeks 6-7)

- **Milestone:** APIs Integrated
- **Activities:** We will integrate Sanity's APIs with Marketo and Shopify.
- **Deliverable:** Integrated APIs.

Phase 5: Content Migration (Weeks 8-9)

- **Milestone:** Content Migrated
- **Activities:** We will migrate ACME-1's existing content into the Sanity platform.
- **Deliverable:** Migrated Content.

Phase 6: User Training (Weeks 10-11)

- **Milestone:** Users Trained
- **Activities:** Docupal Demo, LLC will provide comprehensive training to ACME-1's users on how to use the new Sanity system.
- **Deliverable:** Training Materials and Sessions.

Phase 7: Go-Live (Week 12)

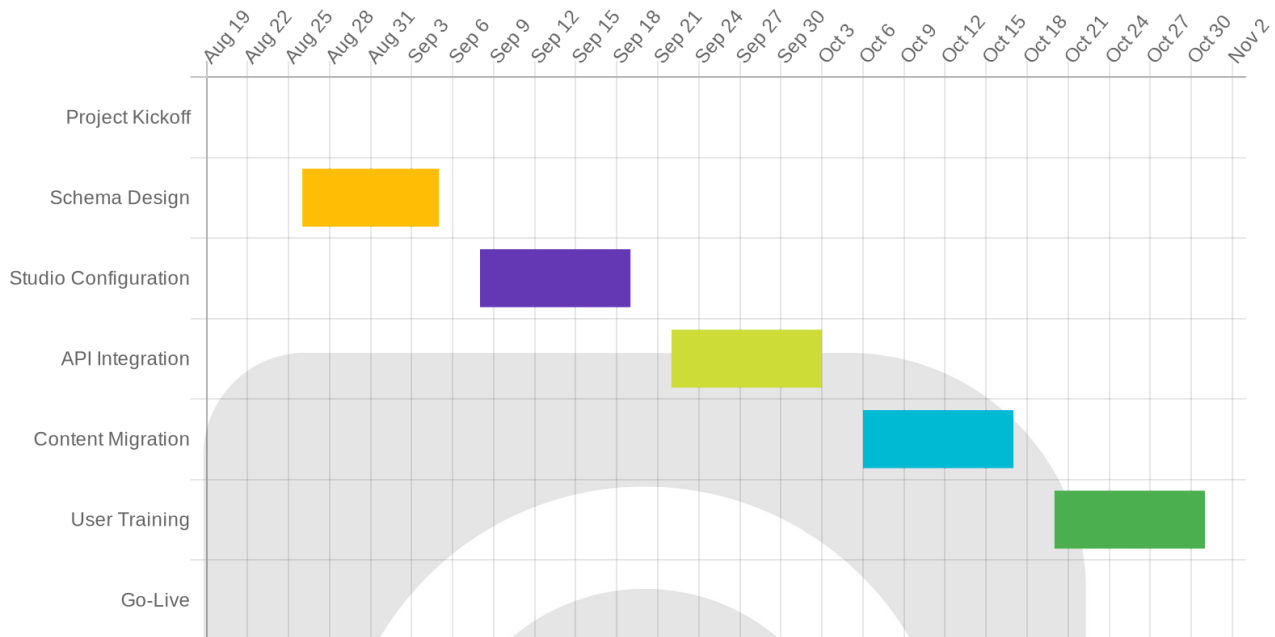
- **Milestone:** Sanity Live
- **Activities:** We will launch the live Sanity implementation.
- **Deliverable:** Live Sanity implementation.

Resource Allocation

Successful integration requires a dedicated team. Docupal Demo, LLC will provide a project manager, content strategists, front-end developers, back-end developers, and Sanity consultants.



Project Timeline (Gantt Chart)



Cost-Benefit Analysis

This section details the costs and benefits associated with integrating Sanity as ACME-1's new content management system. We have analyzed both initial and ongoing expenses, alongside expected gains in productivity and revenue.

Cost Analysis

The implementation of Sanity involves several cost components. These can be categorized into initial and ongoing expenses.

Initial Costs:

- **Sanity Licensing Fees:** These are dependent on the specific Sanity plan chosen by ACME-1, based on their content needs and usage.
- **Consulting Fees:** DocuPal Demo, LLC will provide expert consultation to ensure a smooth and effective integration process.
- **Development Costs:** This includes the cost of customizing Sanity to meet ACME-1's specific requirements, developing custom content models, and integrating Sanity with existing systems.

- **Training Costs:** Training ACME-1's staff to effectively use Sanity is crucial for maximizing its benefits. This includes training content creators, editors, and administrators.

Ongoing Costs:

- **Sanity Hosting Fees:** These fees cover the cost of hosting ACME-1's Sanity instance.
- **Maintenance Costs:** Regular maintenance is essential to ensure the stability and security of the Sanity implementation.
- **Support Costs:** This covers the cost of ongoing support from DocuPal Demo, LLC to address any issues or questions that may arise.

A detailed breakdown of these costs will be provided in the budget section of this proposal.

Benefit Analysis

The benefits of integrating Sanity are substantial and will positively impact ACME-1's operations and revenue.

Productivity Gains:

- **Reduced Content Creation Time:** Sanity's intuitive interface and powerful content modeling capabilities are expected to reduce content creation time by 30%. This will free up ACME-1's content team to focus on more strategic initiatives.
- **Increased Content Reuse:** Sanity's structured content approach enables content to be easily reused across multiple channels. This is projected to increase content reuse by 20%, saving time and resources.

Revenue Impacts:

- **Improved Customer Engagement:** Sanity's ability to deliver personalized and engaging content will improve customer engagement, leading to increased sales and customer loyalty.
- **Faster Time-to-Market:** By streamlining the content creation and publishing process, Sanity will enable ACME-1 to launch new products and services faster, giving them a competitive advantage.



Return on Investment (ROI)

The following bar chart illustrates the distribution of costs associated with the Sanity integration project.

By implementing Sanity, ACME-1 can expect a significant return on investment through increased productivity, improved customer engagement, and faster time-to-market.

Risk Analysis and Mitigation

The integration of Sanity as Acme, Inc's new content management system carries inherent risks. These risks span both technical and operational domains. Proactive identification and mitigation are crucial for successful implementation.

Technical Risks

API integration presents a potential challenge. Integrating Sanity with existing ACME-1 systems may encounter unforeseen complexities. Data migration from legacy systems to Sanity also poses a risk. Incomplete or corrupted data during migration could disrupt operations. Performance bottlenecks are another technical concern. Sanity's performance under ACME-1's expected content load requires careful monitoring.

Mitigation strategies include rigorous testing of all API integrations. This will identify and resolve compatibility issues early. A phased data migration approach, coupled with thorough data cleansing, will minimize data corruption. Continuous performance monitoring and optimization will address any bottlenecks that arise.

Operational Risks

User adoption represents a significant operational risk. If ACME-1 employees are resistant to using the new system, the investment will not yield the desired returns. A lack of internal expertise in Sanity is another concern. Without adequate training and support, employees may struggle to use the system effectively.

To mitigate user adoption challenges, Docupal Demo, LLC will provide comprehensive training programs. Ongoing support and readily available documentation will further assist users. Building a Sanity Center of Excellence

within ACME-1 can foster internal expertise. This would ensure long-term sustainability and knowledge retention.

Contingency Plans

Contingency plans are essential for addressing unforeseen issues. A rollback strategy will be in place. This allows for reverting to the previous system in case of critical problems during deployment. A dedicated team will be prepared to address performance bottlenecks promptly. This ensures minimal disruption to ACME-1's operations.

User Training and Support

Effective user training and support are crucial for a successful Sanity implementation at Acme Inc. We will ensure a smooth transition and maximize user adoption through comprehensive resources and ongoing assistance.

Training Resources

Sanity offers extensive documentation and training materials. These include online tutorials, webinars, and workshops. Docupal Demo, LLC will supplement these resources with custom training sessions. These sessions will be tailored to Acme Inc.'s specific content management needs and workflows. Hands-on exercises and real-world examples will be used to ensure practical understanding.

Encouraging User Adoption

We understand that adopting a new CMS requires more than just training. To encourage user adoption, we will focus on showcasing the benefits of Sanity. This includes demonstrating how it streamlines content creation, improves collaboration, and enhances overall efficiency. Our training approach includes:

- **Hands-on training:** Practical sessions where users can directly interact with the system.
- **Ongoing support:** Readily available assistance to address questions and resolve issues.
- **Benefit highlights:** Clear demonstrations of how Sanity simplifies tasks and improves workflows.



Post-Implementation Support

Docupal Demo, LLC will provide robust post-implementation support to ensure continued success with Sanity. Support channels include:

- **Email:** For general inquiries and non-urgent issues.
- **Phone:** For immediate assistance and critical problems.
- **Dedicated Support Portal:** A centralized platform for submitting tickets, tracking progress, and accessing knowledge base articles.

Our support team will be readily available to address any questions or concerns that may arise, ensuring a seamless and positive experience with the new CMS.

Conclusion and Next Steps

Recommendations

Based on our assessment, we advise moving forward with the Sanity integration as described in this proposal. This implementation is expected to address ACME-1's content management challenges and support its strategic goals.

Required Approvals

To proceed, we require formal approval from ACME-1's CIO and Marketing Director. Their sign-off will authorize the project's initiation and resource allocation.

Immediate Next Steps

Following the necessary approvals, our first action will be to schedule a kickoff meeting. This meeting will serve to:

- Review the detailed project plan.
- Define roles and responsibilities for both Docupal Demo, LLC and ACME-1 team members.
- Establish communication protocols.

This kickoff meeting is crucial to ensuring a smooth and well-coordinated project execution. We are prepared to schedule this meeting promptly upon receiving the green light.

