

Table of Contents

Executive Summary	3
Objectives	3
Key Benefits	3
Stakeholders	3
Current Infrastructure Assessment	3
Current CMS: WordPress	4
Pain Points and Limitations	4
Integrations and Workflows	4
System Usage and Performance	4
Migration Strategy and Approach	4
Phased Migration	4
Data Integrity and Security	5
Fallback and Rollback	5
Migration Timeline and Milestones	5
Content Model Mapping and Adaptation	6
Current Content Structure Analysis	6
Sanity Schema Design	6
Content Type Mapping	7
Customization and Extensions	7
Visualizing Content Type Distribution	7
Risk Analysis and Mitigation	8
Technical Risks	8
Operational Challenges	8
Mitigation and Contingency Plans	8
Risk Matrix	8
Resource Allocation and Budget Estimation	9
Personnel and Expertise	10
Budget Overview	10
Stakeholder Engagement and Communication Plan	11
Key Stakeholders and Roles	11
Communication Channels and Frequency	11
Feedback Collection and Action	12
Post-Migration Support and Maintenance	12



Support Resources	12
Issue Tracking and Resolution	13
Maintenance Schedule	13
Rollback and Contingency Planning	13
Rollback Triggers	13
Rollback Procedure	14
Data Consistency	14
Contingency Measures	14



Executive Summary

This document presents a comprehensive plan for migrating Acme, Inc. (ACME-1)'s content to Sanity. Docupal Demo, LLC will execute the migration. Our primary goals are to enhance content authoring, improve content delivery performance, and provide greater development flexibility.

Objectives

The migration aims to address key pain points with ACME-1's current CMS. The move to Sanity will provide a more streamlined content creation process for the marketing team and content creators. It also allows for faster website performance.

Key Benefits

This migration will unlock several benefits for ACME-1. We anticipate increased content velocity, allowing for quicker content creation and publishing cycles. Improved website performance will lead to better user engagement and satisfaction. Reduced maintenance overhead will free up IT resources for other strategic initiatives.

Stakeholders

Key stakeholders in this project include the marketing team, content creators, and the IT department. Their collaboration will be crucial for a successful migration. Docupal Demo, LLC will work closely with these stakeholders throughout the entire process.

Current Infrastructure Assessment

ACME-1 currently relies on WordPress as its primary content management system. Our assessment reveals several key aspects of this infrastructure that are relevant to a potential migration to Sanity.



Current CMS: WordPress

WordPress hosts over 5,000 pages comprising diverse content types. These include text-based articles, images, videos, and downloadable documents. While WordPress is a widely used platform, ACME-1 experiences several limitations.

Pain Points and Limitations

Content editing within WordPress presents challenges. The existing system also contributes to slow page load times, negatively impacting user experience and potentially search engine rankings. A significant limitation is the restricted API capabilities of the current WordPress setup. This hinders seamless integration with other essential business tools.

Integrations and Workflows

The current infrastructure supports integrations with marketing automation platforms, CRM systems, and ACME-1's e-commerce platform. The migration to Sanity must maintain or improve these integrations to avoid disruption. The existing workflows rely on these integrations, and any changes must be carefully managed.

System Usage and Performance

Migration Strategy and Approach

Docupal Demo, LLC will employ a phased migration approach to transition ACME-1's content to Sanity. This method minimizes disruption and allows for thorough testing and validation at each stage. Our strategy focuses on data integrity, security, and a smooth transition for ACME-1's team.

Phased Migration

We will divide the migration into four key phases:

- 1. Content Audit & Schema Design:** This initial phase involves a comprehensive audit of ACME-1's existing content. We will analyze content types, structures, and dependencies. Based on this audit, we'll design a robust and flexible Sanity



schema tailored to ACME-1's specific needs. This phase is estimated to take 2 weeks.

2. **Development & Testing:** In this phase, we will develop the necessary tools and scripts for content transformation and migration. We will set up a dedicated testing environment to rigorously test the migration process, ensuring data integrity and identifying any potential issues. This phase is estimated to take 4 weeks.
3. **Content Migration:** With the schema designed and tools tested, we will begin migrating content in batches. We will prioritize content based on ACME-1's needs. We will continuously monitor the migration process and validate the migrated content within Sanity. This phase is estimated to take 3 weeks.
4. **Go-Live & Monitoring:** The final phase involves launching the new Sanity-powered content platform. We will provide ongoing monitoring and support to ensure a stable and optimal performance. This phase is estimated to take 1 week.

Data Integrity and Security

Maintaining data integrity and security is paramount. We will implement strict data validation rules throughout the migration process. All data transfers will use secure protocols. Regular backups will be performed to safeguard against data loss.

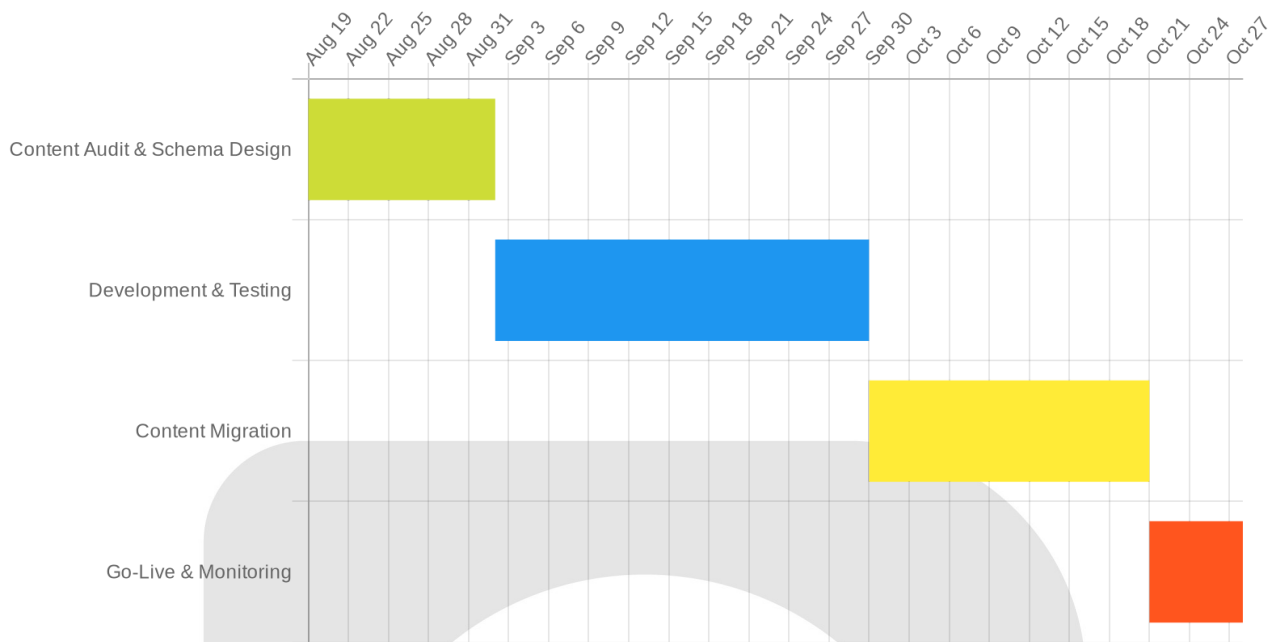
Fallback and Rollback

We have a detailed rollback plan in place. This plan includes comprehensive backup procedures, allowing us to revert to the previous CMS if needed. In the event of unforeseen issues, we can quickly restore ACME-1's content to its original state.

Migration Timeline and Milestones

The following Gantt chart illustrates the migration timeline and key milestones:





Content Model Mapping and Adaptation

This section details how ACME-1's existing content models will transition to Sanity's flexible schema. We will migrate Pages, Blog Posts, Product Descriptions, Case Studies, and Media Assets. Our approach focuses on optimizing the structure and relationships within the content for better performance and maintainability in Sanity.

Current Content Structure Analysis

We will begin by thoroughly analyzing ACME-1's current CMS to understand existing content types, fields, and relationships. This involves documenting the data structure of each content type. We'll examine how content is currently organized and delivered to identify areas for improvement and optimization.

Sanity Schema Design

Based on our analysis, we will design new content schemas in Sanity. These schemas will take full advantage of Sanity's flexibility and structured content approach. We will define clear content types with specific fields, validation rules,



and relationships. This ensures data consistency and a streamlined content creation experience.

Content Type Mapping

The following table illustrates the mapping of current content types to new Sanity schemas:

Current Content Type	Sanity Schema Equivalent	Key Adaptations
Pages	Page	Modular content blocks for flexible layout, improved SEO fields.
Blog Posts	Blog Post	Enhanced authoring experience, category and tag management, related content linking.
Product Descriptions	Product	Structured data for product attributes, improved image handling, integration with e-commerce systems.
Case Studies	Case Study	Clear problem/solution/result sections, customer testimonials, downloadable assets.
Media Assets	Media	Centralized media library, optimized image transformations, improved metadata management.

Customization and Extensions

We will implement custom content blocks within Sanity to allow ACME-1 to create unique and engaging content experiences. API integrations will be developed to connect Sanity with other systems, such as marketing automation platforms or e-commerce solutions. Workflow enhancements will streamline the content creation and publishing process, ensuring efficient content management.

Visualizing Content Type Distribution

The following area chart shows the distribution of content types before and after the migration. This visual representation helps to understand the changes in content structure and organization.

Risk Analysis and Mitigation

Migrating ACME-1's content to Sanity involves potential risks. We have identified key areas of concern and developed mitigation strategies to ensure a smooth transition.

Technical Risks

Data migration errors could occur during the transfer of content to Sanity. To minimize this, we will implement thorough testing procedures. We will also validate data integrity at each stage. Compatibility issues with ACME-1's existing integrations are another concern. We will conduct compatibility testing early in the process. Addressing performance bottlenecks proactively is key. We will monitor system performance closely and optimize configurations as needed.

Operational Challenges

User adoption is crucial for a successful migration. We plan to provide comprehensive training to ACME-1's users. Workflow disruptions could arise during the transition. We will develop a detailed migration schedule and communicate it clearly. Dedicated support resources will be available to address user queries and resolve issues promptly.

Mitigation and Contingency Plans

Our mitigation plans include rigorous testing of the migration process. We will also provide extensive user training. Dedicated support resources will address any arising issues. These measures aim to minimize disruptions. A rollback plan is also in place, in case of critical issues during the migration.

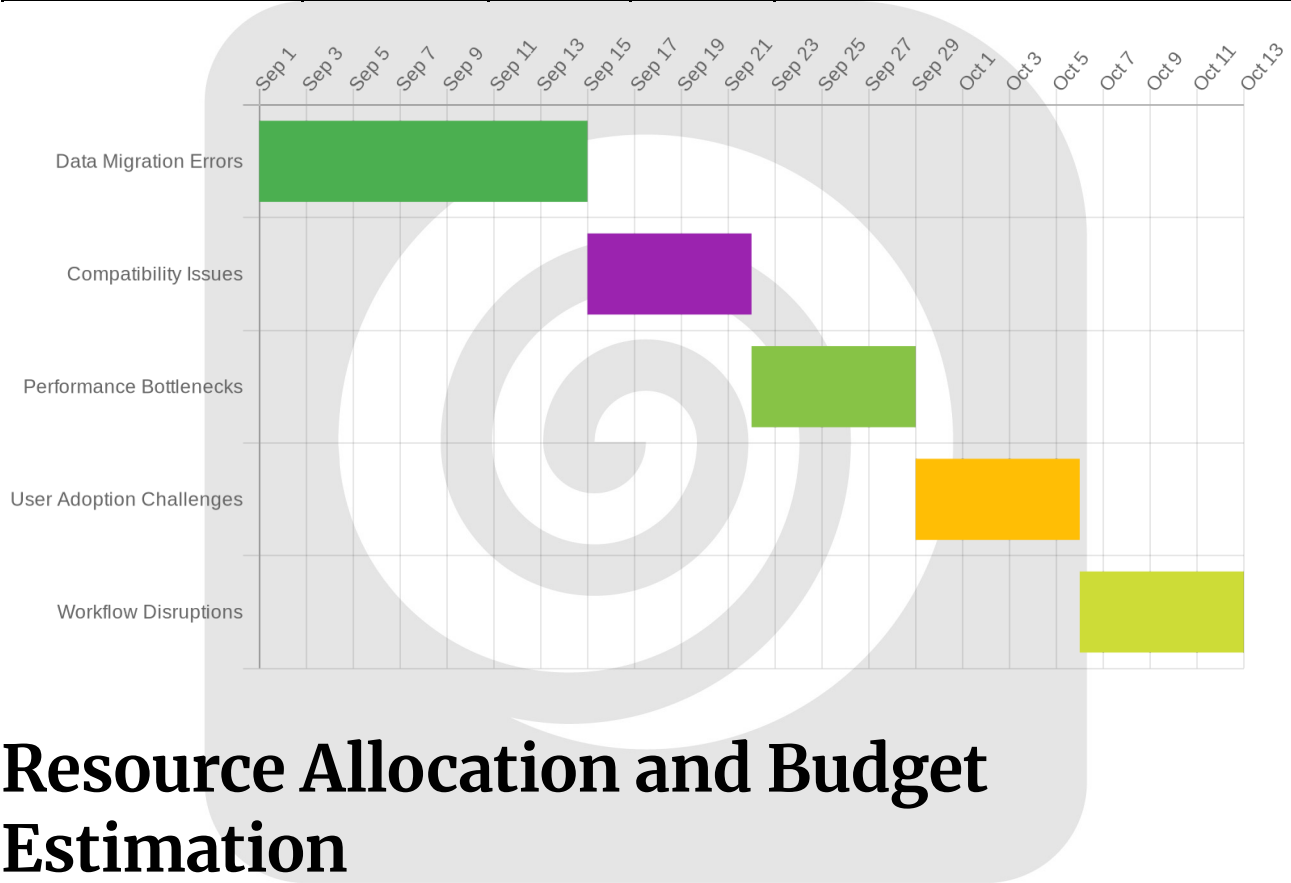
Risk Matrix

The following risk matrix prioritizes potential risks based on their likelihood and impact:

Risk	Likelihood	Impact	Priority	Mitigation Strategy
Data Migration Errors	Medium	High	High	Thorough testing and data validation



Risk	Likelihood	Impact	Priority	Mitigation Strategy
Compatibility Issues	Medium	Medium	Medium	Early compatibility testing with existing integrations
Performance Bottlenecks	Low	Medium	Low	Performance monitoring and configuration optimization
User Adoption Challenges	Medium	High	High	Comprehensive user training and support
Workflow Disruptions	Medium	Medium	Medium	Detailed migration schedule and clear communication



Resource Allocation and Budget Estimation

Successful migration requires the right team and a well-defined budget. We will allocate resources to ensure a smooth transition for ACME-1. Our team will consist of Sanity developers, content strategists, and a dedicated project manager.



Personnel and Expertise

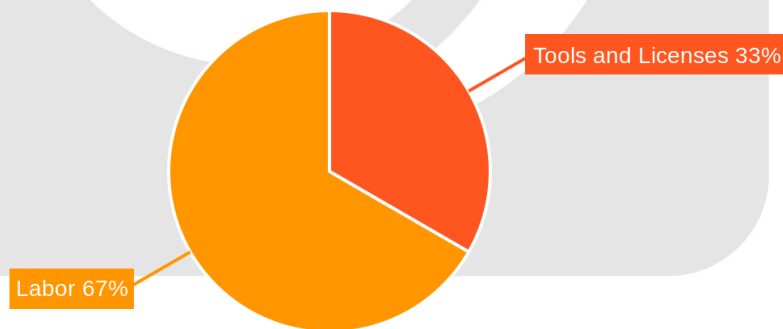
- **Sanity Developers:** These developers will handle the technical aspects. This includes schema design, data migration scripts, and API integrations.
- **Content Strategists:** They will focus on content modeling and information architecture. They will also ensure content quality and consistency.
- **Project Manager:** The project manager will oversee the entire migration. Their responsibilities include planning, coordination, and communication.

We will prioritize tasks effectively. We will also communicate transparently to resolve any resource conflicts.

Budget Overview

The estimated budget covers tools, licenses, and labor costs.

Item	Estimated Cost (USD)
Tools and Licenses	15,000
Labor (Project Team)	30,000
Total	45,000



The "Tools and Licenses" category includes costs for any necessary software. It also includes Sanity CMS licenses. The "Labor" category covers the salaries and hourly rates. It includes our team involved in the migration project. This budget is an estimate and may be adjusted based on the final project scope. Any changes will be communicated and approved by ACME-1.

Stakeholder Engagement and Communication Plan

Effective communication and stakeholder engagement are critical for a successful Sanity migration. We will maintain open and transparent communication throughout the project. This ensures everyone is informed and potential issues are addressed quickly.

Key Stakeholders and Roles

The primary stakeholders for this migration project include:

- **Project Manager (DocuPal Demo, LLC):** Responsible for overseeing the entire project execution, managing timelines, and ensuring deliverables are met.
- **Content Lead (Acme, Inc):** Responsible for managing the content migration process, ensuring content quality, and coordinating content-related tasks.
- **IT Lead (Acme, Inc):** Responsible for ensuring the technical infrastructure is ready for the Sanity migration and addressing any technical issues that may arise.

Communication Channels and Frequency

We will use multiple communication channels to keep stakeholders informed:

- **Weekly Status Reports:** We will provide weekly written status reports summarizing progress, highlighting key achievements, and identifying any potential roadblocks.
- **Regular Meetings:** We will hold regular meetings (frequency to be determined based on project needs) to discuss progress, address concerns, and make decisions collaboratively.



- **Dedicated Communication Channel:** A dedicated Slack channel will be established for quick communication, questions, and updates between the DocuPal Demo, LLC team and Acme, Inc stakeholders.

Feedback Collection and Action

We value feedback and will actively seek it throughout the migration process:

- **Surveys:** We will conduct surveys at key milestones to gather feedback on the migration process and identify areas for improvement.
- **Feedback Sessions:** We will hold feedback sessions with stakeholders to discuss their experiences and gather insights.
- **Dedicated Feedback Form:** A dedicated online feedback form will be available for stakeholders to submit comments, suggestions, and concerns at any time. All feedback will be reviewed and addressed promptly.

Post-Migration Support and Maintenance

Following the successful migration of your content to Sanity, DocuPal Demo, LLC will provide comprehensive support and maintenance to ensure the ongoing health and performance of your new content infrastructure. Our commitment extends beyond the migration phase, offering you the resources and expertise needed to maximize the benefits of Sanity.

Support Resources

We provide multiple avenues for support, including:

- **Sanity Documentation:** Access the official Sanity documentation for in-depth information and guides.
- **Community Forums:** Engage with the Sanity community to share knowledge, ask questions, and find solutions.
- **DocuPal Demo, LLC Dedicated Support:** Benefit from direct support from our team of Sanity experts. We will be available to address your specific questions and concerns.



Issue Tracking and Resolution

To maintain a stable and reliable platform, we will employ a robust issue tracking system. This system allows us to:

- Log and categorize all reported issues.
- Prioritize issues based on impact and severity.
- Track progress on issue resolution.
- Provide regular updates on issue status.

We will also implement regular bug fixes and proactive monitoring to identify and resolve potential issues before they impact your operations.

Maintenance Schedule

To ensure optimal performance and security, we will perform monthly maintenance. These maintenance windows will be scheduled to minimize disruption to your workflow. We will provide advance notice of all planned maintenance activities. During these windows, we will perform tasks such as:

- Security patches.
- Performance optimization.
- System updates.
- Plugin updates.

Rollback and Contingency Planning

This section details the procedures for reverting to the original state and managing unforeseen issues during the Sanity migration.

Rollback Triggers

A rollback will be initiated if any of the following critical issues occur:

- Critical errors during the migration process.
- Significant data loss is detected.
- Unacceptable performance degradation of the new Sanity environment.

Rollback Procedure

Should a rollback become necessary, the following steps will be taken:

1. **Restore from Backup:** We will restore the ACME-1's content management system from the most recent backup taken before the migration began.
2. **Revert DNS Changes:** DNS settings will be reverted to point back to the original CMS to ensure that the website returns to its pre-migration state.
3. **Communication:** Stakeholders will be immediately informed about the rollback, including the reasons for it and the expected timeline for resolution.

Data Consistency

Data validation checks will be performed after the migration and during any rollback to confirm accuracy and completeness. These checks are necessary to maintain data consistency.

Contingency Measures

Besides the rollback plan, Docupal Demo, LLC will also implement the following contingency measures:

- **Continuous Monitoring:** We will actively monitor the migration process to quickly identify and address any issues.
- **Staging Environment:** Rigorous testing in a staging environment will precede the production migration to minimize risks.
- **Resource Allocation:** Adequate resources, including personnel and technical support, will be allocated to resolve unforeseen problems efficiently.

