

Table of Contents

Introduction	3
Project Overview	3
Proposal Purpose	3
Market Analysis	3
E-commerce Trends	3
Marketing Landscape	4
Svelte Adoption	4
Technology Considerations	4
Project Scope and Deliverables	4
Core Features and Functionalities	5
Project Boundaries and Exclusions	5
Deliverables	5
Acceptance Criteria	6
Technical Approach	6
Svelte Integration	6
Development Tools and Frameworks	6
Architectural Overview	6
Timeline and Milestones	7
Project Timeline	7
Project Phases and Deadlines	7
Milestones	7
Contingency	8
Budget and Cost Breakdown	8
Cost Breakdown	8
Payment Schedule	9
Potential Cost Risks	9
Team and Expertise	10
Key Personnel	10
Communication and Collaboration	10
Portfolio and Case Studies	11
Relevant Data	11
Q&A	12
Risk Management	12



Potential Risks	12
Mitigation Strategies	13
Contingency Plans	13
Support and Maintenance	13
Post-Launch Support	13
Bug Tracking and Resolution	13
Regular Maintenance and Updates	14
Conclusion and Next Steps	14
Immediate Actions	14
Further Engagement	14



Introduction

Project Overview

Docupal Demo, LLC presents this proposal to Acme, Inc. to outline the development of a modern website. Our team will leverage the Svelte framework to create a fast, efficient, and easily maintainable online presence. This project directly addresses ACME-1's need for improved website performance, leading to better user experiences and enhanced business results.

Proposal Purpose

This document details our proposed approach, development timeline, and investment. We aim to provide ACME-1 with a clear understanding of our capabilities and how we can deliver a website that meets your specific requirements. The new website will aim to improve ACME-1's digital footprint.

Market Analysis

The proposed Svelte website development project for ACME-1 exists within the dynamic sectors of e-commerce and marketing. These industries demand fast, efficient, and engaging web experiences. Svelte, as a modern JavaScript compiler, directly addresses these needs.

E-commerce Trends

E-commerce continues its strong growth trajectory. Customers expect seamless mobile experiences, fast loading times, and personalized content. Websites must be optimized for conversion, meaning every element needs to contribute to a smooth purchase process. Svelte's performance characteristics make it well-suited for building high-performing e-commerce platforms. A slow or clunky website can directly impact sales. Svelte helps minimize these risks.



Marketing Landscape

Marketing relies heavily on data-driven insights and personalized customer journeys. Websites serve as central hubs for marketing campaigns. They must integrate with various marketing tools, such as analytics platforms and CRM systems. Svelte's component-based architecture facilitates the creation of modular and maintainable websites. This makes it easier to adapt to evolving marketing strategies and integrate new technologies.

Svelte Adoption

Svelte has gained traction in recent years as a compelling alternative to traditional JavaScript frameworks. Its unique approach to compiling code at build time results in smaller bundle sizes and faster runtime performance. This translates to better user experiences.

The chart indicates the rise in Svelte adoption from 2020 to 2025.

Svelte's increasing popularity is also driven by its ease of use and developer-friendly syntax. The framework's clear documentation and supportive community contribute to a smooth learning curve. This allows developers to quickly build and deploy high-quality websites.

Technology Considerations

Svelte offers advantages in terms of performance, bundle size, and developer experience. These factors can translate into cost savings and improved business outcomes for ACME-1. By leveraging Svelte, ACME-1 can create a website that is not only visually appealing but also technically sound and optimized for success in the competitive e-commerce and marketing landscapes.

Project Scope and Deliverables

This section outlines the scope of the website development project for ACME-1, detailing the features to be developed and the specific deliverables Docupal Demo, LLC will provide. The project focuses on building a functional and user-friendly website that meets ACME-1's core business needs.



Core Features and Functionalities

The website will include these key features:

- **User Authentication:** Secure user registration and login functionality to manage user accounts.
- **Product Catalog:** A comprehensive and easily navigable display of ACME-1's products.
- **Shopping Cart:** A user-friendly shopping cart system for customers to add and manage their selected items.
- **Checkout Process:** A secure and streamlined checkout process for completing purchases.
- **Content Management System (CMS) Integration:** Integration with a CMS to allow ACME-1 to easily manage and update website content.

Project Boundaries and Exclusions

This project specifically excludes the following:

- Mobile app development.
- Third-party integrations beyond those required for the core features listed above.
- Ongoing content creation for the website.

Deliverables

The following deliverables will be provided to ACME-1 throughout the project:

- **Project Plan:** A detailed project plan outlining tasks, timelines, and responsibilities.
- **Website Design Mockups:** Visual representations of the website's design and layout for review and approval.
- **Functional Website:** A fully functional website incorporating all core features and functionalities.
- **CMS Integration:** Seamless integration with a content management system.
- **Testing and Quality Assurance:** Thorough testing to ensure the website functions correctly and meets quality standards.
- **User Documentation:** Documentation to guide ACME-1 on how to use and maintain the website and CMS.
- **Source Code:** Complete source code of the website.



Acceptance Criteria

Each deliverable will be clearly defined by user stories and acceptance criteria. Success will be measured through rigorous testing and comprehensive client feedback at each stage of development. This iterative approach ensures that the final product aligns perfectly with ACME-1's requirements and expectations.

Technical Approach

Our team will use an Agile/Scrum development methodology. This allows for flexibility and iterative progress. We will deliver working software frequently. This ensures the solution aligns with ACME-1's evolving needs.

Svelte Integration

Svelte will be the core framework for building ACME-1's website. It offers a component-based architecture. This promotes code reusability and maintainability. Svelte's approach to reactivity will ensure a fast and responsive user experience. We will use Svelte to manage the application state.

Development Tools and Frameworks

We will use VSCode as our primary code editor. VSCode offers powerful features for Svelte development. SvelteKit will serve as the meta-framework. It provides routing, server-side rendering, and other essential features. Netlify will handle deployment and hosting. It offers a reliable and scalable infrastructure.

Architectural Overview

The website architecture will follow a modular design. Each module will correspond to a specific feature or section of the website. Svelte components will encapsulate the logic and presentation for each module. This approach enhances maintainability and testability. The front end will communicate with backend services via API calls, if required. We will define clear API contracts to ensure seamless integration. The architecture will support future scalability and feature additions.



Timeline and Milestones

Project Timeline

This section outlines the anticipated project schedule. It details key milestones and deliverables for the Svelte website development. We will use weekly progress reports. Daily stand-up meetings will also help. We will use project management software (e.g., Jira) for tracking.

Project Phases and Deadlines

The project is divided into four main phases:

1. **Requirements Gathering:** This phase will take approximately 2 weeks. We will define project scope and gather all necessary information.
2. **Design and Prototyping:** This phase will take about 3 weeks. We will create website designs and interactive prototypes.
3. **Development:** The development phase is estimated to last 8 weeks. We will build the Svelte website based on approved designs.
4. **Testing and Deployment:** This final phase will take around 3 weeks. We will conduct thorough testing and deploy the website to the live environment.

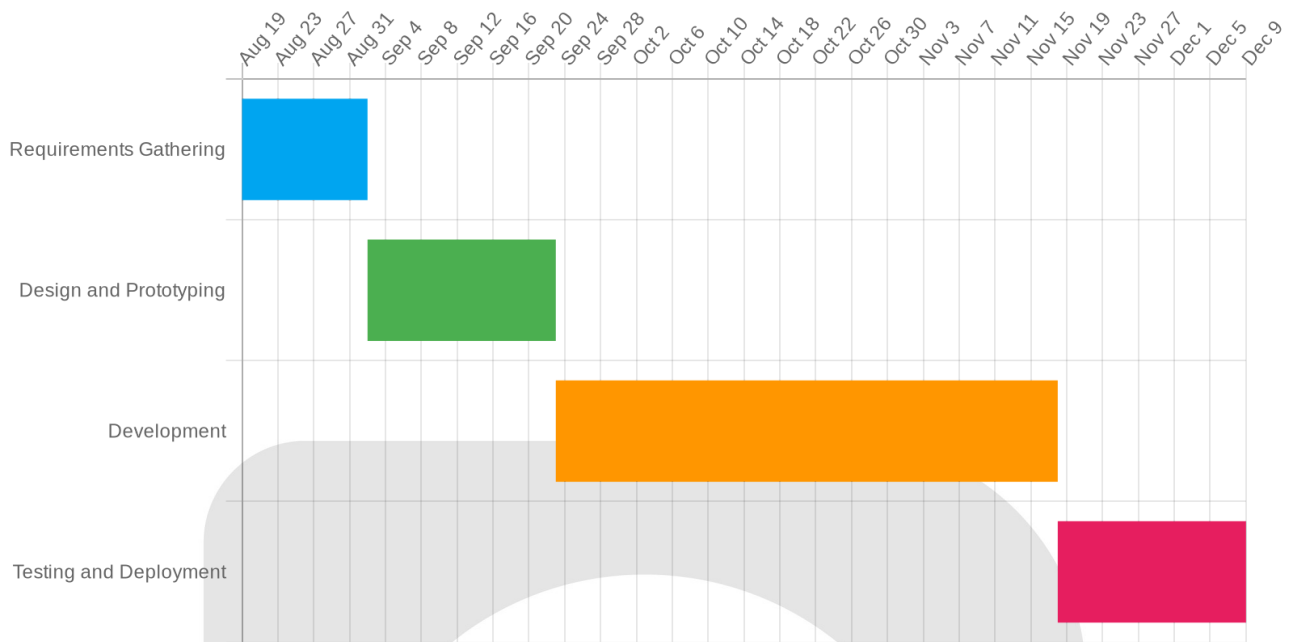
Milestones

- **Milestone 1: Requirements Document Completion.** End of week 2.
- **Milestone 2: Design Prototype Approval.** End of week 5.
- **Milestone 3: Core Functionality Completion.** End of week 13.
- **Milestone 4: Website Launch.** End of week 16.

Contingency

Any change requests will be reviewed. We will evaluate their impact on the timeline and budget. We will make adjustments as needed.





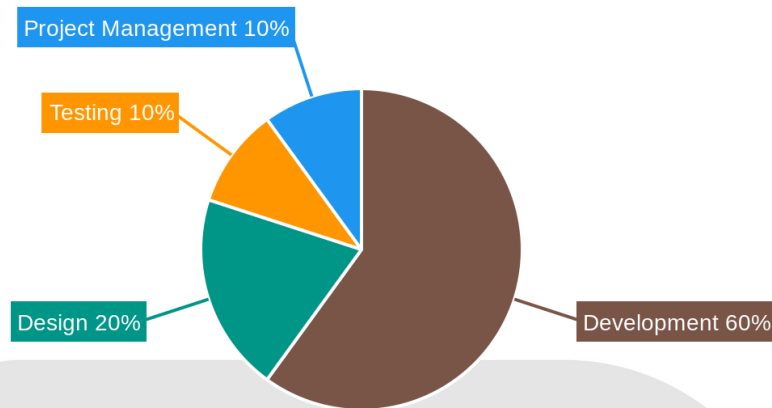
Budget and Cost Breakdown

Our proposed budget for the Svelte website development project is detailed below. This budget reflects our commitment to delivering a high-quality, effective solution for ACME-1.

Cost Breakdown

The total estimated cost for the project is \$50,000. This encompasses all aspects of the website development, from initial design to final deployment. The costs are distributed across the following key categories:

- **Development:** \$30,000
- **Design:** \$10,000
- **Testing:** \$5,000
- **Project Management:** \$5,000



Payment Schedule

We propose the following payment schedule to ensure a smooth and transparent process:

Phase	Percentage	Amount
Upfront	30%	\$15,000
Completion of Design	30%	\$15,000
Completion of Development	30%	\$15,000
Final Deployment & Acceptance	10%	\$5,000

Potential Cost Risks

While we have made every effort to provide an accurate estimate, certain risks could potentially impact the final cost. These include:

- **Scope Creep:** Changes or additions to the project requirements beyond the initial agreement may require additional resources and time.
- **Integration Challenges:** Integrating with third-party systems or APIs may present unforeseen technical difficulties.

- **Third-Party Dependencies:** Delays or changes implemented by third-party vendors we rely on may affect the project timeline and budget.

We will proactively communicate any potential risks and work collaboratively with ACME-1 to mitigate their impact.

Team and Expertise

Docupal Demo, LLC brings together a skilled team ready to deliver a high-quality Svelte website for ACME-1. Our team's expertise ensures a smooth and efficient development process. We are based in Anytown, CA.

Key Personnel

Our core team consists of experienced professionals dedicated to this project's success:

- **John Doe, Project Manager:** John will oversee the project, ensuring it stays on schedule and within budget. He will be your primary point of contact.
- **Jane Smith, Lead Developer:** Jane will lead the development efforts. She has over five years of Svelte and web development experience. Her expertise includes projects with architectures similar to what ACME-1 requires.
- **Peter Jones, UI/UX Designer:** Peter will focus on creating an intuitive and engaging user experience.

Communication and Collaboration

We believe in clear and consistent communication. Our team will conduct daily stand-up meetings to address immediate needs. We will also hold weekly meetings with ACME-1 to provide updates and gather feedback. We will primarily communicate via Slack and email. This multi-channel approach ensures everyone stays informed and aligned throughout the project.



Portfolio and Case Studies

Relevant Data

Docupal Demo, LLC has successfully delivered numerous Svelte website projects. These projects span various industries, demonstrating our adaptability and expertise.

Project 1: Streamline SaaS Platform

- Client: TechForward Inc.
- Industry: SaaS
- Project Goal: Improve user experience and website performance.
- Solution: Developed a new Svelte-based front-end.
- Outcome:
 - 40% faster page load times.
 - 25% increase in user engagement.
- Client Testimonial: "Docupal Demo's Svelte expertise transformed our platform. The performance improvements were remarkable." – John Smith, CEO, TechForward Inc.

Project 2: Modern E-commerce Website

- Client: FashionHub
- Industry: E-commerce
- Project Goal: Create a modern, fast, and responsive e-commerce website.
- Solution: Built a Svelte-powered e-commerce platform.
- Outcome:
 - 30% increase in conversion rates.
 - 15% reduction in bounce rate.
- Client Testimonial: "Our new Svelte website from Docupal Demo is a game-changer. It's fast, beautiful, and drives sales." – Emily Johnson, Marketing Director, FashionHub

Project 3: Enhanced Blog Platform

- Client: Global News Network
- Industry: Media
- Project Goal: Enhance the performance and user experience of their blog platform.



- Solution: Migrated the existing platform to Svelte.
- Outcome:
 - 50% improvement in website speed.
 - Increased mobile traffic by 20%.
- Client Testimonial: "Docupal Demo's Svelte development skills have significantly improved our blog's performance and user experience." – David Lee, CTO, Global News Network

Q&A

- Q: What kind of projects has Docupal Demo, LLC done before? A: We have worked on various Svelte projects, including SaaS platforms, e-commerce websites, and blog platforms.
- Q: Can you provide specific examples of past projects? A: Yes, we have case studies for TechForward Inc. (SaaS), FashionHub (e-commerce), and Global News Network (media).
- Q: What were the outcomes of these projects? A: Outcomes included improved website performance, increased user engagement, higher conversion rates, and reduced bounce rates.
- Q: Do you have testimonials from past clients? A: Yes, we have included testimonials from the clients in the case studies.
- Q: What were the goals of the projects? A: Project goals varied, but common goals included improving user experience, increasing website speed, and creating responsive designs.
- Q: What metrics do you use to measure success? A: We track metrics such as page load times, user engagement, conversion rates, and bounce rates.

Risk Management

This section outlines potential risks associated with the Svelte website development project for ACME-1, along with mitigation strategies and contingency plans.

Potential Risks

Technical risks include potential performance bottlenecks within the Svelte application and the discovery of security vulnerabilities that could compromise ACME-1's data. Operational risks consist primarily of resource constraints, such as



team member unavailability, and communication breakdowns that could lead to misunderstandings or delays.

Mitigation Strategies

We will conduct regular code reviews to identify and address performance issues early in the development lifecycle. Security audits will be performed throughout the project to detect and remediate potential vulnerabilities. To mitigate operational risks, we will hold regular risk assessment meetings to proactively identify and address potential resource constraints or communication issues.

Contingency Plans

In the event of unforeseen issues, we have several fallback solutions in place. We have identified alternative hosting providers to ensure continuous website availability. Our code is backed up in multiple repositories to prevent data loss. The project team has redundancy, with multiple team members capable of performing key tasks. These measures will help ensure project continuity and minimize the impact of any disruptions.

Support and Maintenance

Docupal Demo, LLC will provide comprehensive support and maintenance services for the ACME-1 website following its launch. We aim to ensure the website remains secure, functional, and up-to-date.

Post-Launch Support

We offer 3 months of complimentary support. This covers bug fixes and minor enhancements identified after the website goes live. We will address any issues that arise promptly.

Bug Tracking and Resolution

We will use a dedicated bug tracking system, such as Jira. This system allows ACME-1 to log and monitor issues. It also helps us to prioritize and resolve them efficiently.



Regular Maintenance and Updates

ACME-1 will receive quarterly updates. These updates include security patches to protect against vulnerabilities. We will also deliver feature enhancements to improve the website's functionality. These updates ensure the website remains current with evolving technologies and user expectations.

Conclusion and Next Steps

Svelte provides a fast, efficient, and maintainable solution tailored to ACME-1's website requirements. This approach ensures optimal performance and a streamlined user experience.

Immediate Actions

To initiate the project, we require approval of this proposal and the initial payment as outlined. This will allow us to allocate resources and commence the development process promptly.

Further Engagement

For any questions or clarifications, please contact John Doe at john.doe@docupaldemo.com or by phone at 555-123-4567. We are ready to discuss the next steps and answer any queries you may have.

