

Table of Contents

Introduction	3
Project Overview	3
Key Benefits	3
Market Analysis	3
E-commerce Growth Drivers	4
E-commerce Market Growth Trends (2020-2025)	4
Svelte in the Frontend Landscape	4
Technical Architecture and Solution Overview	5
Core Technologies	5
Architecture Diagram	5
Scalability and Performance	5
Security Measures	5
Design and User Experience Strategy	6
UI/UX Principles	6
Responsive Design	6
Accessibility Standards	6
Customer Journey Focus	7
Team Introduction and Expertise	7
Core Competencies	7
Team Roles and Experience	7
Project Timeline and Milestones	8
Project Phases and Milestones	8
Project Timeline Visualization	9
Budget and Cost Breakdown	9
Cost Allocation	10
Pricing Structure	10
Payment Schedule	11
Testing, Quality Assurance, and Launch Plan	11
Testing and Quality Assurance	11
Bug Tracking and Resolution	12
Launch Plan	12
Post-launch Maintenance and Support	12
Ongoing Maintenance	12



Support Services	12
Performance Monitoring and Optimization	13
Portfolio and Case Studies	13
Svelte Ecommerce Examples	13
Conclusion and Call to Action	14
Proposal Advantages	14
Next Steps	14
Call to Action	14



Introduction

DocuPal Demo, LLC is pleased to present this proposal to Acme, Inc (ACME-1) for the development of a cutting-edge ecommerce platform. Our goal is to help ACME-1 significantly increase online sales and dramatically improve the customer experience through a modern, efficient, and user-friendly online store. This document outlines our proposed approach, leveraging the Svelte framework to deliver a cost-effective, high-performance solution.

Project Overview

This project focuses on creating a scalable ecommerce architecture tailored to ACME-1's specific needs. We will utilize the Svelte framework to build a platform that offers enhanced user experiences and is easy to maintain and update. Our proposed solution emphasizes not only the aesthetic design but also the underlying technology, ensuring a secure, accessible, and robust online presence for ACME-1.

Key Benefits

Our Svelte-based ecommerce platform offers several key advantages:

- **Enhanced User Experience:** Svelte's reactive nature allows for fast and fluid interactions, leading to higher customer satisfaction.
- **Cost-Effective Development:** Svelte's efficient compilation process reduces code size and improves performance, translating to lower hosting costs and faster loading times.
- **Scalable Architecture:** Our design will accommodate future growth and evolving business needs.

Market Analysis

The North American e-commerce market continues to expand, particularly among tech-savvy millennials and Gen X. Several factors fuel this growth, creating opportunities for ACME-1.



E-commerce Growth Drivers

- **Mobile Commerce:** Consumers increasingly shop via smartphones and tablets. A mobile-first approach is now essential.
- **Personalized Shopping:** Customers expect tailored experiences. Recommending products and customizing content based on user data is critical.
- **Social Media Marketing:** Platforms like Instagram and Facebook are powerful sales channels. Integrating social commerce features can drive significant revenue.

E-commerce Market Growth Trends (2020-2025)

The e-commerce sector has seen consistent growth. The following bar chart illustrates this trend from 2020 to 2025.

Units: Trillions of USD

Svelte in the Frontend Landscape

Svelte presents a compelling alternative to established JavaScript frameworks like React and Angular. Its key advantages include:

- **Performance:** Svelte compiles code to highly efficient vanilla JavaScript during the build process. This results in faster load times and smoother user interactions.
- **Efficiency:** Svelte's architecture minimizes the amount of code shipped to the browser, reducing bloat and improving overall performance.
- **Developer Experience:** Svelte's simpler syntax and component-based approach can lead to faster development cycles.

By leveraging Svelte, ACME-1 can create a high-performance e-commerce platform that delivers an exceptional user experience. This can translate into increased conversions and customer satisfaction.

Technical Architecture and Solution



Overview

This section details the technical foundation for ACME-1's new e-commerce platform. We will leverage the Svelte framework to build a fast, efficient, and maintainable application. Svelte's component-based architecture promotes code reusability and simplifies development. Its compiler optimizes performance by shifting work from the browser to the build process.

Core Technologies

The platform will integrate several key technologies:

- **Svelte:** The primary front-end framework, providing a reactive and performant user interface.
- **Node.js:** A JavaScript runtime environment for building the server-side application logic.
- **PostgreSQL:** A robust and scalable open-source relational database to store product catalogs, customer data, and order information.
- **Shopify API:** This will enable integration with Shopify for inventory management, payment processing, and other e-commerce functionalities.

Architecture Diagram

Scalability and Performance

To handle increasing traffic and data, the architecture will be designed for scalability. We will use load balancing and caching techniques. The database will be optimized for query performance. We also recommend using a Content Delivery Network (CDN) to deliver static assets quickly. For hosting, we suggest Netlify or AWS, both offering scalable infrastructure.

Security Measures

Security is a top priority. The platform will use HTTPS for secure communication. We will implement secure data storage practices, including encryption of sensitive information. Regular security audits and penetration testing will be conducted. We will also follow industry best practices to protect against common web vulnerabilities like Cross-Site Scripting (XSS) and SQL Injection.



Design and User Experience Strategy

Our design and user experience (UX) strategy for ACME-1's e-commerce platform centers on creating a seamless, engaging, and accessible shopping experience. We will focus on a clean user interface (UI), intuitive navigation, and engaging visuals to maximize user engagement.

UI/UX Principles

We will adhere to the following core UI/UX principles:

- **Clarity:** Presenting information clearly and concisely.
- **Simplicity:** Avoiding unnecessary complexity in design and functionality.
- **Consistency:** Maintaining a uniform look and feel across the platform.
- **Efficiency:** Enabling users to find and purchase products quickly.
- **Accessibility:** Ensuring the platform is usable by people with disabilities.

Responsive Design

To ensure a consistent experience across all devices, we will implement a responsive design using CSS Grid and Flexbox. This approach will allow the platform to adapt seamlessly to different screen sizes and resolutions, providing optimal viewing and interaction on desktops, tablets, and smartphones.

Accessibility Standards

We are committed to making the e-commerce platform accessible to all users. Our design will adhere to WCAG 2.1 AA standards, covering aspects such as:

- Sufficient color contrast
- Keyboard navigation
- Alternative text for images
- Clear and consistent page structure

Customer Journey Focus

We will map the customer journey from initial product discovery to order completion, identifying key touchpoints and opportunities for optimization. This involves creating user flows that are intuitive and efficient, minimizing friction and



maximizing conversion rates. We will focus on:

- Streamlined product search and filtering
- Clear and informative product pages
- A simple and secure checkout process
- Easy access to customer support

Team Introduction and Expertise

DocuPal Demo, LLC assembles a dedicated team of experts for your ACME-1 ecommerce platform development. Our team structure includes a Project Manager, a Lead Developer, a UI/UX Designer, and several Frontend Developers. Each member brings specialized skills to ensure a successful project outcome.

Core Competencies

Our core competencies encompass Svelte framework proficiency, JavaScript expertise, UI/UX design, and seamless backend integration. These skills are essential for creating a modern, efficient, and user-friendly ecommerce experience.

Team Roles and Experience

The Project Manager will oversee all aspects of the project, ensuring timely delivery and effective communication. The Lead Developer will guide the technical implementation, maintaining code quality and adherence to best practices. Our UI/UX Designer will focus on creating an intuitive and engaging user interface. The Frontend Developers will translate designs into functional Svelte components. We are confident in our team's ability to deliver a high-quality Svelte ecommerce platform tailored to your needs.

Project Timeline and Milestones

This section outlines the proposed project timeline, including key milestones and deliverables for the development of ACME-1's ecommerce platform. The project is structured into distinct phases, each with specific goals and measurable outcomes. Each development sprint will last two weeks. The timeline is subject to adjustments based on the timely completion of third-party API integrations.



Project Phases and Milestones

1. Discovery and Planning (2025-08-19 – 2025-08-26)

- **Milestone:** Project kickoff meeting and requirements gathering completed.
- **Deliverables:** Detailed project plan, finalized requirements document, and initial project schedule.

2. Design and Prototyping (2025-08-26 – 2025-09-09)

- **Milestone:** Completion of wireframes and mockups.
- **Deliverables:** Wireframes, mockups, and user interface design.

3. Frontend Development (2025-09-09 – 2025-10-07)

- **Milestone:** Development of the user interface and key components.
- **Deliverables:** Functional prototypes, responsive design implementation.

4. Backend Development (2025-10-07 – 2025-11-04)

- **Milestone:** API integrations and database setup completed.
- **Deliverables:** Fully functional backend system with API endpoints.

5. Testing and Quality Assurance (2025-11-04 – 2025-11-18)

- **Milestone:** Completion of system testing and user acceptance testing.
- **Deliverables:** Test reports and bug fixes.

6. Deployment (2025-11-18 – 2025-11-25)

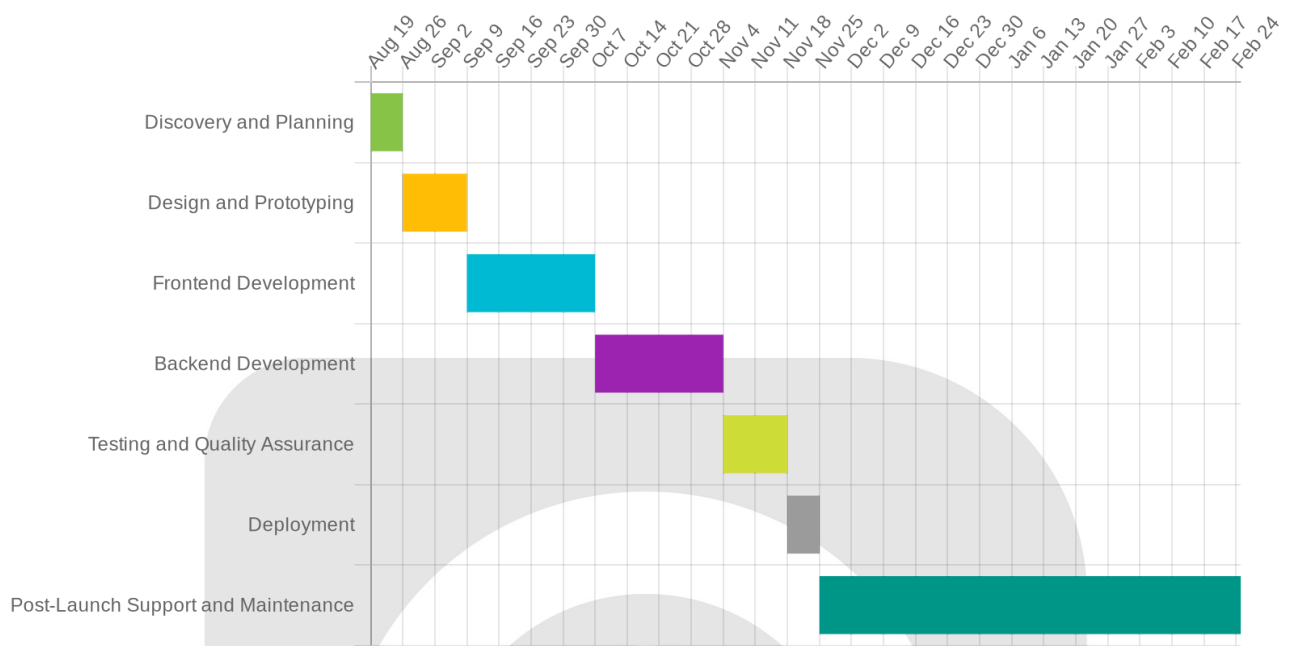
- **Milestone:** Successful deployment of the ecommerce platform to the production environment.
- **Deliverables:** Fully deployed ecommerce platform.

7. Post-Launch Support and Maintenance (2025-11-25 onwards)

- **Milestone:** Ongoing monitoring and maintenance of the platform.
- **Deliverables:** Regular updates, security patches, and technical support.



Project Timeline Visualization



Budget and Cost Breakdown

This section details the budget for the development of ACME-1's ecommerce platform. Our pricing reflects a commitment to delivering a high-quality, scalable, and secure solution. The total project cost is estimated at \$150,000. This encompasses all phases, from initial design to final deployment and testing.

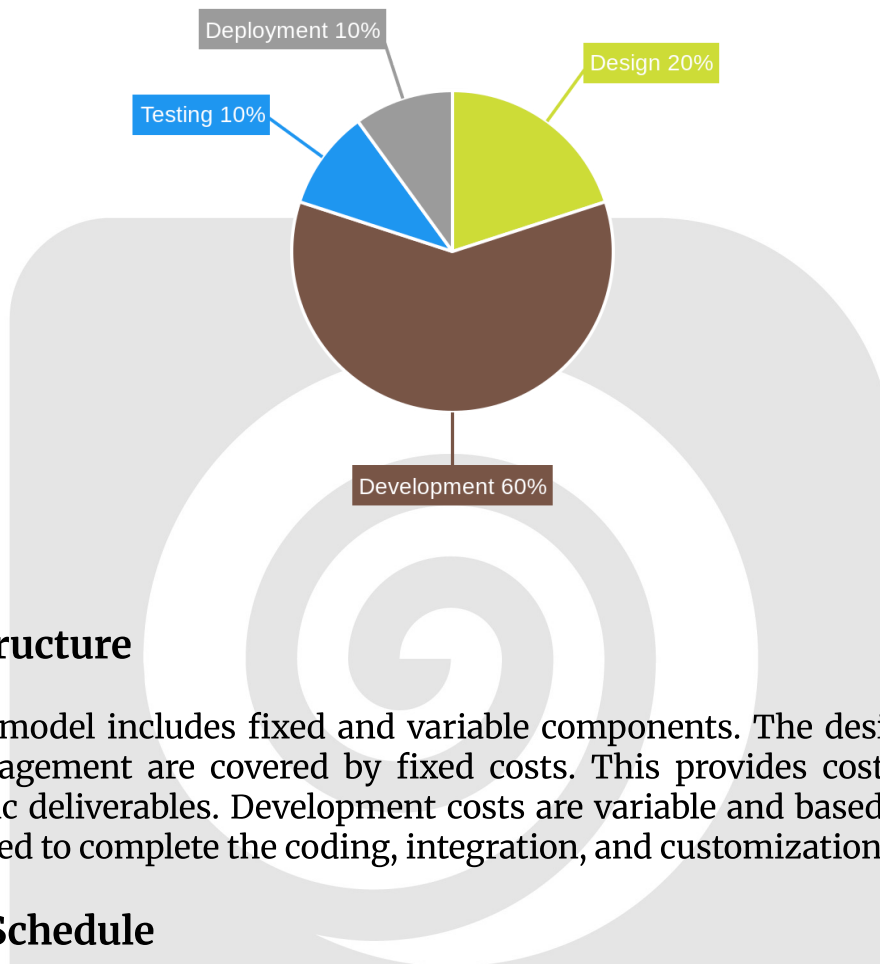
Cost Allocation

The budget is strategically allocated across key project activities to ensure efficiency and quality.

Activity	Percentage	Estimated Cost
Design	20%	\$30,000
Development	60%	\$90,000
Testing	10%	\$15,000
Deployment	10%	\$15,000



Activity	Percentage	Estimated Cost
Total	100%	\$150,000



Pricing Structure

Our pricing model includes fixed and variable components. The design phase and project management are covered by fixed costs. This provides cost certainty for these specific deliverables. Development costs are variable and based on the actual hours required to complete the coding, integration, and customization tasks.

Payment Schedule

We offer flexible payment options based on the achievement of key project milestones. This phased approach ensures alignment and allows ACME-1 to monitor progress and manage budget effectively. The payment schedule will be mutually agreed upon before the project commences.

Testing, Quality Assurance, and Launch



Plan

We will ensure the ecommerce platform meets ACME-1's requirements through rigorous testing and quality assurance processes. Our approach focuses on delivering a stable, reliable, and user-friendly platform.

Testing and Quality Assurance

Our testing strategy includes unit tests, integration tests, and user acceptance testing (UAT). We will use staging environments that mirror the production environment to conduct thorough testing. Jest will be our primary tool for unit testing, ensuring individual components function correctly. Our dedicated QA team will perform functional, performance, security, and usability testing.

Testing Phase	Description	Tools
Unit Testing	Testing individual components in isolation.	Jest
Integration Testing	Testing the interaction between different components.	
User Acceptance Testing	Allowing ACME-1's team to test the platform and provide feedback.	
Performance Testing	Ensuring the platform can handle expected traffic loads.	
Security Testing	Identifying and addressing potential security vulnerabilities.	
Usability Testing	Evaluating the platform's ease of use and overall user experience.	

Bug Tracking and Resolution

We will use Jira for bug tracking and issue resolution. All identified bugs will be logged, prioritized, and assigned to the appropriate development team members for resolution. Regular bug review meetings will be held to ensure timely resolution and prevent recurrence.



Launch Plan

We will implement a phased rollout strategy to ensure a smooth launch. This involves initially releasing the platform to a small group of users, monitoring its performance, and gradually expanding access to the entire user base. During the launch phase, our team will provide continuous monitoring and support to address any issues that may arise. We will closely monitor key metrics such as website traffic, conversion rates, and error rates to ensure the platform is performing optimally.

Post-launch Maintenance and Support

DocuPal Demo, LLC understands that launching your new ecommerce platform is just the beginning. We offer comprehensive post-launch maintenance and support services to ensure your site remains secure, performs optimally, and continues to meet your business needs.

Ongoing Maintenance

We provide proactive maintenance to keep your Svelte ecommerce platform running smoothly. This includes monthly security patches to address potential vulnerabilities and protect your data. We also schedule quarterly feature updates to enhance functionality and improve the user experience.

Support Services

Our support team is available to assist you with any questions or issues that may arise. We offer multiple channels for support:

- **Email Support:** For general inquiries and non-urgent issues.
- **Phone Support:** For immediate assistance with critical problems.
- **Online Support:** Access to our knowledge base and support ticket system.

Performance Monitoring and Optimization

We use Google Analytics to monitor your website's performance and identify areas for improvement. Our team conducts regular performance audits to ensure fast loading times, optimal user experience, and high conversion rates. We will provide



recommendations and implement updates to optimize your platform's performance over time.

Portfolio and Case Studies

We bring strong experience in building ecommerce solutions. We focus on modern technologies like Svelte. Our past projects show our ability to deliver fast, secure, and user-friendly online stores.

Svelte Ecommerce Examples

Here are a few examples of our work:

- **Project: "Green Grocer Online":** We built an online grocery store for a local farm. It features product browsing, shopping cart, secure checkout, and order management. The site uses Svelte for a fast and responsive user experience. We integrated a payment gateway for secure transactions. The result was a 30% increase in the farm's online sales within the first quarter.
- **Project: "Tech Gadgets Shop":** We developed an ecommerce platform for a tech gadget retailer. Key features included advanced product filtering, customer reviews, and a personalized recommendation engine. The platform was built using Svelte and a headless CMS. This allowed for flexible content management and a seamless shopping experience across devices. The client saw a 20% boost in conversion rates after launch.
- **Project: "Fashion Forward Boutique":** We created a stylish online boutique for a clothing store. The site included high-quality product images, a lookbook feature, and social media integration. We used Svelte to create a visually appealing and highly performant website. This helped the boutique reach a wider audience and increase online sales by 25%.

These projects demonstrate our ability to deliver high-quality ecommerce solutions using Svelte. We are confident we can bring the same level of success to your project. We understand the importance of speed, security, and user experience in the ecommerce space.



Conclusion and Call to Action

Proposal Advantages

Choosing our proposal means ACME-1 gets a faster, modern ecommerce platform. Development costs will be lower. Users will experience a superior interface.

Next Steps

We want to make moving forward easy. We will assign a dedicated project manager to your project. You'll receive regular updates on our progress.

Call to Action

Let's schedule a follow-up meeting. We can discuss the details and plan our next steps for your project.

