

Table of Contents

Introduction	3
Proposal Overview	3
Why Svelte?	3
Our Value Proposition	3
Project Scope and Objectives	3
Core Functionalities	4
Key Features	4
Project Objectives	4
Technology Stack and Tools	5
Core Technologies	5
Development and Build Tools	5
Deployment	5
Development Timeline and Milestones	6
Project Timeline and Milestones	6
Project Phases	6
Milestones and Deliverables	6
Progress Tracking and Communication	7
Contingency Plans	7
Pricing and Payment Terms	8
Pricing Structure	8
Project Cost	8
Payment Terms	8
Ongoing Support and Maintenance	8
Team and Expertise	9
Our Team	9
Quality and Delivery	9
Testing and Quality Assurance	9
Testing Procedures	9
Tools and Tracking	10
Quality Standards	10
Deployment and Maintenance Strategy	10
Deployment	10
Maintenance and Support	10



Risk Management and Mitigation	10
Potential Risks	11
Mitigation Strategies	11
Terms and Conditions	11
Project Ownership	11
Payment Terms	11
Cancellation and Refunds	12
Warranty and Liability	12
Conclusion and Next Steps	12
Approval and Kickoff	12
Timeline	12
About Us	12
Our Commitment to Innovation	13
Expertise in Svelte Development	13
Portfolio Highlights	13



Introduction

Proposal Overview

This document outlines Docupal Demo, LLC's proposal to develop a custom Svelte application for ACME-1. ACME-1 seeks to streamline its user interface, improve application performance, and enhance the overall user experience. Our team understands these challenges and believes a Svelte-based solution offers the best path forward.

Why Svelte?

We propose Svelte due to its superior performance capabilities. Svelte's architecture results in smaller bundle sizes and a highly reactive component model. This translates to faster loading times and a more responsive user interface for ACME-1's users.

Our Value Proposition

Docupal Demo, LLC brings deep Svelte expertise to this project. We combine this technical skill with an agile development process. Our commitment is to deliver a high-quality product on time, within budget, and to ACME-1's complete satisfaction. We're confident our approach will provide exceptional value.

Project Scope and Objectives

This document outlines the scope and objectives for the custom Svelte development project for ACME-1. Docupal Demo, LLC will deliver a solution tailored to ACME-1's specific needs, focusing on user engagement and seamless integration with existing systems.

Core Functionalities

The project will encompass the development of a web application with the following core functionalities:



- **User Authentication and Authorization:** Secure user login and role-based access control.
- **Data Management:** Efficient storage, retrieval, and manipulation of relevant data.
- **Reporting and Analytics:** Generation of insightful reports based on user activity and key performance indicators (KPIs).
- **Integration with ACME-1's CRM:** Bi-directional data synchronization between the new application and ACME-1's existing CRM system.
- **Payment Gateway Integration:** Secure processing of online payments through integration with ACME-1's chosen payment gateway.

Key Features

The application will include the following key features:

- **Intuitive User Interface:** A user-friendly design that promotes ease of navigation and a positive user experience.
- **Responsive Design:** Compatibility across various devices, including desktops, tablets, and smartphones.
- **Customizable Dashboards:** Personalized dashboards displaying relevant information to each user.
- **Real-time Notifications:** Instant alerts and updates to keep users informed.
- **Search and Filtering:** Robust search capabilities for efficient data discovery.

Project Objectives

The primary objectives of this project are:

- **Successful Launch:** Deploy a fully functional and stable application within the agreed-upon timeframe.
- **Positive User Feedback:** Achieve high levels of user satisfaction based on usability and performance.
- **Improved Engagement Metrics:** Increase user activity, time spent on the platform, and overall engagement.
- **Seamless Integration:** Ensure smooth and reliable integration with ACME-1's existing CRM and payment gateway systems.
- **Scalability and Maintainability:** Develop a solution that can easily scale to accommodate future growth and is maintainable with minimal effort.



Technology Stack and Tools

We propose a modern technology stack to deliver a fast, efficient, and maintainable application for ACME-1. Our choices emphasize developer productivity, application performance, and ease of deployment.

Core Technologies

- **Svelte:** We will use Svelte as our primary JavaScript framework. Svelte's compiler optimizes the application during the build process, resulting in smaller bundle sizes and faster runtime performance. Its component-based architecture promotes code reusability and maintainability.

Development and Build Tools

- **Vite:** We will use Vite as our build tool. Vite offers fast development server startup times and optimized production builds, improving the development experience.

Deployment

- **Netlify:** We propose using Netlify for deploying and hosting the application. Netlify's global content delivery network (CDN) ensures fast loading times for users. Its automated deployment features streamline the release process. Netlify's scalable infrastructure supports the application's growth.

This stack supports scalability and maintainability. Svelte's efficient reactivity, combined with Vite's optimized builds and Netlify's scalable infrastructure, provides a solid foundation for ACME-1.

Development Timeline and Milestones

Project Timeline and Milestones

This section outlines the proposed development timeline for the ACME-1 project. We will use an agile approach, focusing on iterative development and continuous feedback. The project is divided into five major phases: Discovery, Design,



Development, Testing, and Deployment.

Project Phases

- **Discovery (4 weeks):** This initial phase involves detailed requirements gathering, system analysis, and project planning.
- **Design (4 weeks):** During this phase, we will create wireframes, mockups, and prototypes to visualize the user interface and overall system architecture.
- **Development (12 weeks):** This is the core phase where the Svelte application will be built, incorporating the approved designs and functionalities.
- **Testing (4 weeks):** Rigorous testing will be conducted to ensure quality, identify bugs, and validate the application's performance.
- **Deployment (2 weeks):** The final phase involves deploying the application to the production environment and providing initial user training.

Milestones and Deliverables

Milestone	Deliverable	Estimated Completion Date
Discovery Complete	Requirements Document, Project Plan	2025-09-09
Design Complete	Wireframes, Mockups, Prototypes	2025-10-07
Development - Phase 1	Core Functionality Implementation	2025-11-04
Development - Phase 2	Integration of Key Features	2025-12-02
Development Complete	Fully Functional Svelte Application	2026-01-27
Testing Complete	Bug Fixes, Performance Optimization	2026-02-24
Deployment Complete	Live Application, User Training Documentation	2026-03-10

Progress Tracking and Communication

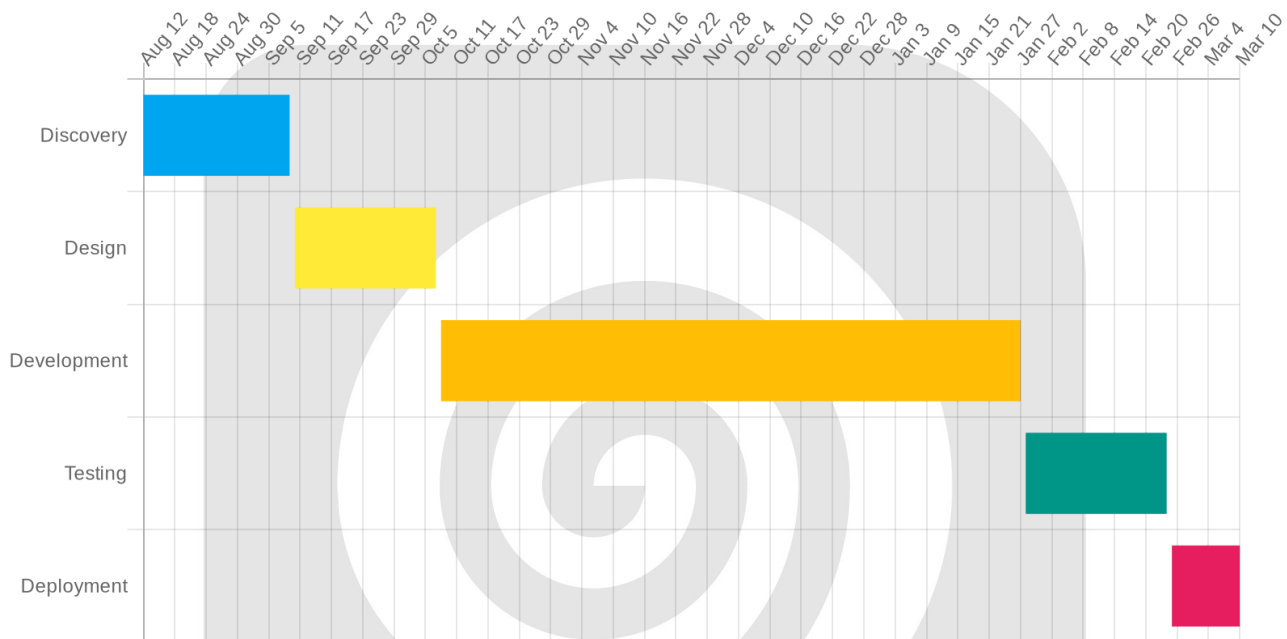
We will maintain transparent communication throughout the project lifecycle. Our team will conduct daily stand-up meetings to track progress and address any roadblocks. Weekly progress reports will be provided to ACME-1, summarizing



accomplishments, upcoming tasks, and potential risks. ACME-1 will also have access to a real-time project dashboard for detailed progress monitoring.

Contingency Plans

Docupal Demo, LLC understands the importance of delivering projects on time and within budget. We have implemented contingency plans to mitigate potential delays, including flexible resource allocation, proactive risk management, and open communication with ACME-1 regarding any challenges that may arise.



Pricing and Payment Terms

Pricing Structure

Our pricing for the Svelte custom development project for ACME-1 is based on a fixed-price model for the defined project scope. This ensures budget predictability. Any changes requested beyond the original scope will be billed on an hourly basis. We will communicate these out-of-scope requests, and their associated costs, to ACME-1 for approval before implementation.

Project Cost

The total fixed price for the project is detailed below:

Phase	Description	Cost (USD)
Phase 1: Planning	Project Planning, Requirements Gathering	\$5,000
Phase 2: Design	UI/UX Design and Prototyping	\$10,000
Phase 3: Development	Svelte Development and Implementation	\$25,000
Phase 4: Testing	Quality Assurance and User Acceptance Testing	\$5,000
Phase 5: Deployment	Deployment and Initial Configuration	\$5,000
Total		\$50,000

Payment Terms

We require a 50% upfront payment to begin the project. The remaining 50% is due upon project completion and ACME-1's acceptance of the deliverables.

Ongoing Support and Maintenance

Please note that the above pricing does not include ongoing maintenance or support. A separate maintenance and support package is available. We can provide details on this package upon request.

Team and Expertise

Docupal Demo, LLC offers a dedicated team with the skills to ensure the success of your Svelte custom development project. Our team's expertise in modern web development practices, combined with a commitment to quality, allows us to deliver solutions that meet your needs.

Our Team

- **John Doe, Project Manager:** John will oversee the project lifecycle, ensuring clear communication, on-time delivery, and adherence to your requirements.
- **Jane Smith, Svelte Developer:** Jane is a skilled Svelte developer with extensive experience in building performant and scalable web applications.



- **Peter Jones, UI/UX Designer:** Peter will create intuitive and engaging user interfaces that enhance the overall user experience.

Quality and Delivery

We are committed to delivering high-quality solutions on time and within budget. Our development process incorporates:

- **Rigorous code reviews** to maintain code quality and identify potential issues early.
- **Automated testing** to ensure the stability and reliability of the application.
- **CI/CD pipelines** for efficient and frequent deployments.

Testing and Quality Assurance

Docupal Demo, LLC will employ a comprehensive testing strategy to ensure the quality and reliability of the Svelte application developed for ACME-1. This includes unit, integration, and end-to-end (e2e) testing.

Testing Procedures

Unit tests will validate individual components and functions in isolation. Integration tests will verify the interaction between different parts of the application. End-to-end tests will simulate real user scenarios to ensure the application functions correctly as a whole.

Tools and Tracking

We will use industry-standard testing frameworks suitable for Svelte applications. Jira will be used for bug tracking and issue management, providing transparency and facilitating efficient resolution.

Quality Standards

Before delivery, all code must pass unit and integration tests. The application must also meet established accessibility standards. We will ensure the absence of critical bugs, guaranteeing a stable and user-friendly experience.



Deployment and Maintenance Strategy

We will deploy the Svelte application to Netlify. This platform offers a global CDN for optimal performance and reliability.

Deployment

Our deployment process utilizes a CI/CD pipeline. Every update is managed through a version control system. This ensures controlled and efficient deployments to Netlify.

Maintenance and Support

Our maintenance services include bug fixes and security updates. We also provide minor enhancements to keep your application up-to-date. Maintenance is billed hourly, allowing flexibility.

We provide comprehensive support via both email and phone.

Risk Management and Mitigation

Docupal Demo, LLC recognizes that custom Svelte development projects carry inherent risks. We proactively identify and mitigate these risks to ensure project success for ACME-1.

Potential Risks

Our primary concerns include scope creep, integration challenges, and potential performance bottlenecks. Scope creep can lead to timeline extensions and budget overruns. Integration with existing systems may present unforeseen technical hurdles. Performance issues can negatively impact the user experience.

Mitigation Strategies

To manage scope creep, we will implement a formal change request process. All change requests will undergo a thorough evaluation to determine their impact on the project timeline and budget. Approved changes will be documented and integrated into the project plan. We will address integration challenges through



Careful planning, thorough testing, and close collaboration with ACME-1's technical team. We will optimize code and data structures throughout the development process to minimize performance bottlenecks.

Terms and Conditions

This section outlines the terms and conditions governing the Svelte custom development project between Docupal Demo, LLC and Acme, Inc (ACME-1). These terms are effective as of 2025-08-12.

Project Ownership

ACME-1 retains full ownership of all intellectual property rights associated with the developed software and related materials.

Payment Terms

Payment schedule and amounts are detailed in the "Project Costs and Payment Schedule" section. All payments must be made in United States Dollars (USD).

Cancellation and Refunds

ACME-1 may cancel the project with 30 days' written notice. Upon cancellation, Docupal Demo, LLC will provide a prorated refund based on the percentage of work completed up to the cancellation date.

Warranty and Liability

Docupal Demo, LLC warrants its work for a period of 90 days following delivery. Our liability for any claims arising from this agreement is limited to the total contract value.

Conclusion and Next Steps

This proposal outlines a custom Svelte development plan tailored to ACME-1's specific needs. Docupal Demo, LLC is ready to deliver a high-quality solution that meets your objectives.



Approval and Kickoff

To move forward, we request your approval of this proposal. You can reach John Doe at john.doe@docupaldemo.com or 555-123-4567 with your approval or any questions.

Timeline

We aim to sign the contract within one week of your approval. The project will commence within two weeks of the contract being signed. Following contract signature, we will schedule a kickoff meeting to align on project specifics. Please provide access to the necessary systems to facilitate a smooth project start.

About Us

Our Commitment to Innovation

DocuPal Demo, LLC, located at 23 Main St, Anytown, CA 90210, is dedicated to providing innovative web solutions. Our mission is to drive business growth through cutting-edge technology and customized development strategies.

Expertise in Svelte Development

We specialize in Svelte development. Our team is proficient in creating high-performance, reactive web applications. We are based in the United States and committed to delivering solutions that meet the unique needs of each client.

Portfolio Highlights

Our portfolio showcases our ability to deliver sophisticated web applications using Svelte and related technologies. We have successfully completed projects that range from single-page applications to complex e-commerce platforms.

For example, we developed a customer relationship management (CRM) system for a national retail chain, improving their customer engagement and sales tracking. We also built a data visualization dashboard for a leading financial institution, enabling them to make data-driven decisions.



We are confident that our expertise with Svelte, combined with our focus on innovation, makes us the ideal partner for your project.

