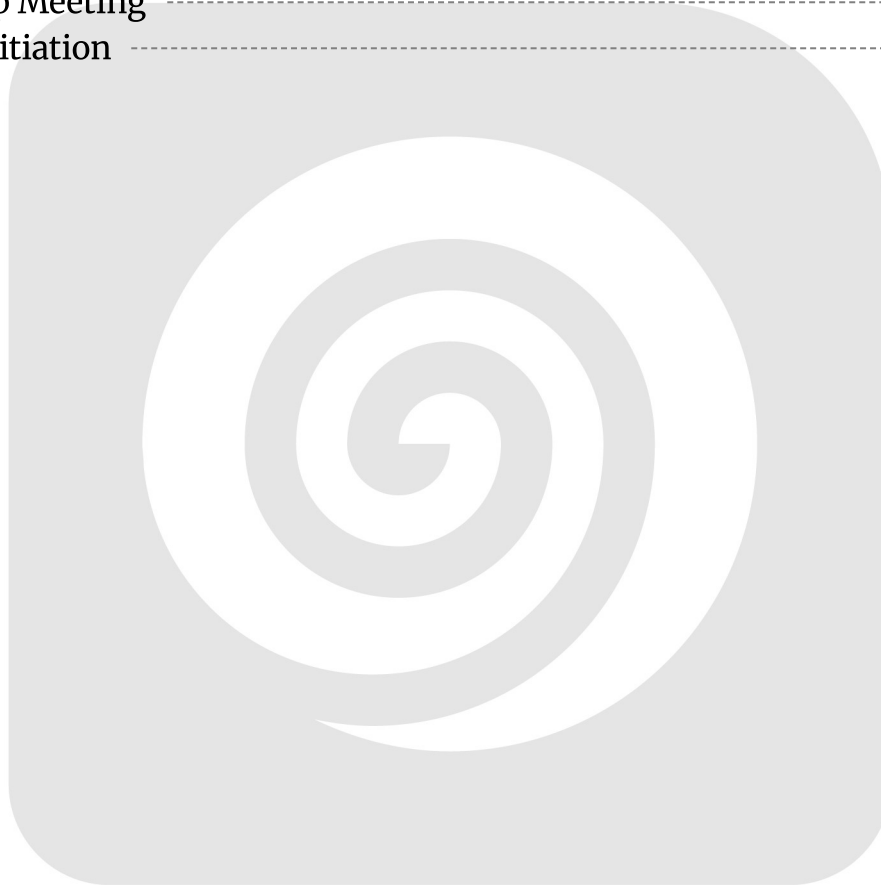


Table of Contents

Introduction	3
Objectives	3
SvelteKit Advantage	3
Market Analysis	3
Target Markets	4
Ecommerce Trends	4
Competitive Landscape	4
Global Ecommerce Growth Projections	5
Project Scope & Deliverables	5
Core Ecommerce Features	5
Custom and AI-Powered Features	5
Integrations	6
Deliverables	6
Technical Approach	7
Frontend Development	7
Backend Development	7
Database Design	7
API Communication	7
Scalability, Security, and Performance	7
System Architecture	8
Deployment Strategy	8
User Experience & Design	9
Mobile-First Approach	9
Accessibility	9
Key Design Elements	9
Project Timeline & Milestones	10
Project Phases and Durations	10
Key Milestones and Deliverables	10
Budget & Pricing	11
Development Costs	11
Post-Launch Support	11
Team & Expertise	11
Our Team	12



Relevant Experience	12
Partner	12
Portfolio & Case Studies	12
Fashion Ecommerce Platform	13
AI-Powered Product Recommendations	13
Additional Information	13
Conclusion & Next Steps	13
Project Benefits	13
Next Steps	14
Follow-Up Meeting	14
Project Initiation	14



Introduction

This document presents a comprehensive proposal from Docupal Demo, LLC to Acme Inc. for the development of a high-performance ecommerce platform. Our aim is to provide a clear roadmap for creating a user-friendly online store that aligns directly with ACME-1's business objectives. We understand Acme Inc.'s goals to increase online sales, improve customer engagement, and expand market reach. This proposal details how we will achieve these goals through a custom-built ecommerce solution.

Objectives

The primary objectives of this ecommerce project are to:

- Significantly increase ACME-1's online sales revenue.
- Enhance customer engagement through a seamless and intuitive user experience.
- Expand ACME-1's market reach by providing a scalable and SEO-optimized platform.

SvelteKit Advantage

We propose using SvelteKit for this project due to its superior performance capabilities compared to other frameworks. SvelteKit offers a streamlined development experience, resulting in faster development cycles and reduced costs. Furthermore, its excellent SEO capabilities will ensure high visibility in search engine results, driving organic traffic to ACME-1's online store. The result is a faster, more efficient, and more discoverable online presence for ACME-1.

Market Analysis

The ecommerce market is experiencing rapid growth. Consumers are increasingly turning to online shopping for convenience and variety. This trend is expected to continue in the coming years, making a robust ecommerce platform essential for businesses like ACME-1. Our analysis focuses on key market dynamics, target demographics, and competitive factors.



Target Markets

Our primary target markets are North America and Europe. Within these regions, we will concentrate on tech-savvy millennials and Gen Z consumers. These demographics are highly active online shoppers and are receptive to innovative ecommerce experiences. They value personalization, mobile accessibility, and seamless user interfaces.

Ecommerce Trends

Several key trends are shaping the ecommerce landscape:

- **Personalized Shopping Experiences:** Customers expect tailored recommendations and offers based on their browsing history and preferences.
- **Mobile Commerce (m-commerce):** A significant portion of online shopping occurs on mobile devices. A mobile-first approach is crucial for reaching a wider audience.
- **AI-Powered Recommendations:** Artificial intelligence is being used to provide more accurate and relevant product recommendations, enhancing the shopping experience.

Competitive Landscape

The ecommerce platform market is competitive. Major players include:

- Shopify
- WooCommerce

Our solution differentiates itself through:

- **Customizability:** SvelteKit allows for a highly customized platform tailored to ACME-1's specific needs.
- **Performance:** SvelteKit's optimized performance ensures a fast and responsive shopping experience.
- **Cutting-Edge Technologies:** We leverage the latest technologies, including AI, to provide advanced features and capabilities.



Global Ecommerce Growth Projections

The following chart illustrates the projected growth of the global ecommerce market from 2020 to 2025.

Project Scope & Deliverables

This section details the scope of the SvelteKit ecommerce platform development for ACME-1, outlining the specific deliverables Docupal Demo, LLC will provide. Our focus is on delivering a high-performance, feature-rich platform tailored to ACME-1's needs.

Core Ecommerce Features

We will develop the following core ecommerce functionalities:

- **Product Catalog Management:** Tools for ACME-1 to efficiently manage and update their product listings, including descriptions, images, and pricing.
- **Shopping Cart:** A user-friendly shopping cart system allowing customers to easily add, remove, and modify items before checkout.
- **Checkout Process:** A streamlined and secure checkout process that guides customers through order placement.
- **User Accounts:** Functionality for customers to create and manage their accounts, save addresses, and view order history.
- **Order Management:** A robust order management system for ACME-1 to track and fulfill customer orders efficiently.
- **Customer Support:** Basic customer support features integrated into the platform.

Custom and AI-Powered Features

To differentiate ACME-1's platform, we will incorporate these advanced features:

- **AI-Powered Product Recommendations:** Personalized product recommendations using AI algorithms to enhance the shopping experience and increase sales.
- **AI-Driven Chatbot:** An AI chatbot to provide instant customer support, answer frequently asked questions, and assist with issue resolution.



Integrations

The platform will integrate with the following services:

- **Payment Gateways:**
 - Stripe
 - PayPal
- **Analytics:**
 - Google Analytics
 - Mixpanel
- **Shipping Providers:**
 - FedEx
 - UPS
 - USPS

Deliverables

The project deliverables include:

1. **Functional Ecommerce Platform:** A fully functional SvelteKit ecommerce platform with all the features and integrations described above.
2. **Admin Panel:** An intuitive admin panel for ACME-1 to manage products, orders, customers, and content.
3. **Mobile-Responsive Design:** A responsive design that ensures the platform works seamlessly on all devices (desktops, tablets, and smartphones).
4. **Documentation:** Comprehensive documentation covering platform usage, administration, and code structure.
5. **Source Code:** Complete source code of the SvelteKit ecommerce platform.
6. **Training:** Training sessions for ACME-1 personnel on how to use and maintain the platform.

Technical Approach

Our approach focuses on building a fast, scalable, and secure e-commerce platform using a modern technology stack. SvelteKit will be the foundation for the frontend, ensuring excellent performance and SEO. Node.js will power the backend, providing a robust and scalable server-side environment. PostgreSQL will serve as the database, offering reliability and efficient data management.



Frontend Development

We'll use SvelteKit to create a dynamic and responsive user interface. SvelteKit's server-side rendering capabilities will improve initial load times and SEO. Tailwind CSS will help us rapidly prototype and style the application with a consistent design. The frontend will be structured into reusable components, promoting maintainability and scalability.

Backend Development

The backend will be built using Node.js and Express.js. This provides a flexible and scalable environment for handling API requests, managing data, and processing business logic. We will follow industry best practices for security and code quality.

Database Design

PostgreSQL will be used as the primary database. We will design a relational schema optimized for e-commerce data, including products, categories, users, orders, and payments. Data integrity and security will be paramount.

API Communication

The frontend and backend will communicate via REST APIs. We will design clear and well-documented API endpoints for all necessary operations, such as product browsing, adding items to the cart, placing orders, and managing user accounts. API authentication and authorization will be implemented to ensure security.

Scalability, Security, and Performance

To ensure scalability, we will implement load balancing to distribute traffic across multiple servers. A Content Delivery Network (CDN) will be used to cache static assets and reduce latency for users around the world. Regular security audits will be conducted to identify and address potential vulnerabilities. Database queries will be optimized to ensure fast response times.

System Architecture

The system architecture will comprise the following key elements:



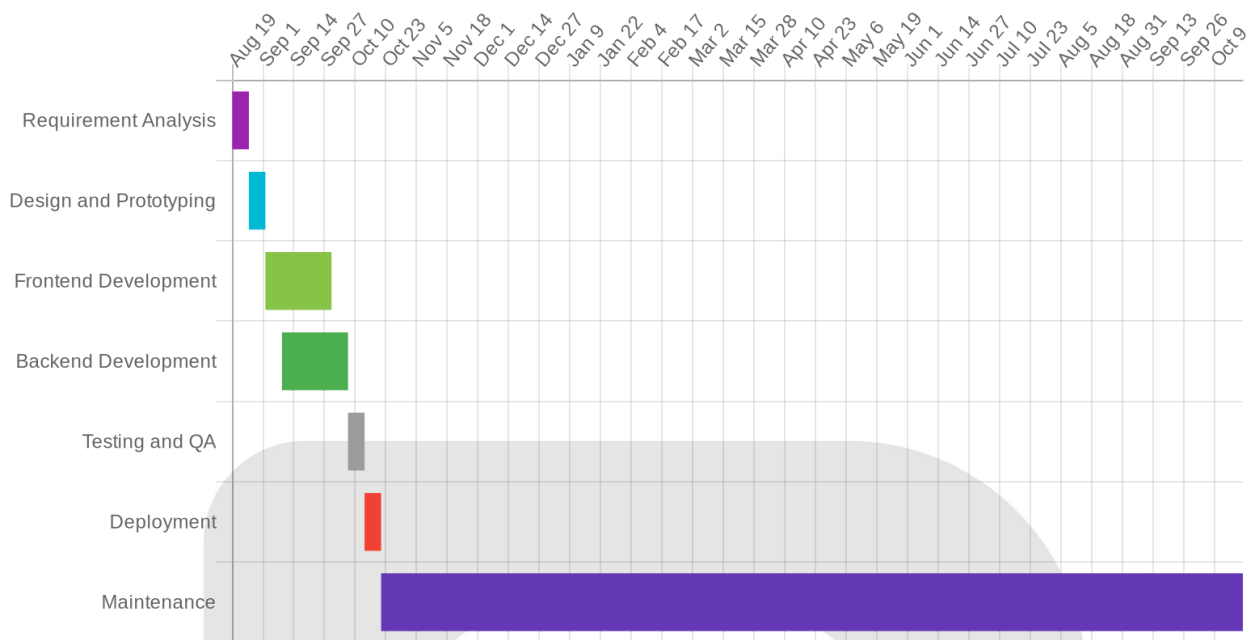
- **Client:** User interacts with the SvelteKit frontend in their web browser.
- **SvelteKit Frontend:** Handles user interface, routing, and API requests to the backend.
- **Node.js Backend:** Processes API requests, manages business logic, and interacts with the database.
- **PostgreSQL Database:** Stores all application data, including products, users, and orders.
- **CDN:** Delivers static assets (images, CSS, JavaScript) to improve performance.
- **Load Balancer:** Distributes traffic across multiple backend servers for scalability.

Deployment Strategy

We will use a modern deployment strategy that includes:

- **Containerization:** Docker will be used to containerize the application, ensuring consistent deployment across different environments.
- **Orchestration:** Kubernetes will be used to orchestrate the containers, providing scalability, high availability, and automated deployments.
- **Cloud Platform:** We recommend deploying the application to a cloud platform such as AWS, Google Cloud, or Azure, which offer robust infrastructure and services for hosting and managing the application.
- **CI/CD:** A Continuous Integration/Continuous Deployment (CI/CD) pipeline will be set up to automate the build, test, and deployment process.





User Experience & Design

Our design philosophy centers on creating a seamless and engaging shopping experience for your customers. We will focus on intuitive navigation, clear product presentation, and a streamlined checkout process.

Mobile-First Approach

We will adopt a mobile-first design approach. This ensures optimal viewing and interaction on smartphones and tablets. We will also explore the potential for a progressive web app (PWA) implementation to further enhance the mobile experience.

Accessibility

We are committed to making your ecommerce platform accessible to all users. The design will adhere to WCAG 2.1 Level AA accessibility standards. This will ensure usability for individuals with disabilities.



Key Design Elements

- **Intuitive Navigation:** Easy-to-use menus and search functionality will help customers find products quickly.
- **Clear Product Presentation:** High-quality images, detailed descriptions, and customer reviews will inform purchasing decisions.
- **Streamlined Checkout:** A simple and secure checkout process will minimize cart abandonment.

Project Timeline & Milestones

This section outlines the proposed timeline for the SvelteKit ecommerce development project, including key milestones and deliverables. We have incorporated a 10% contingency buffer into the schedule to accommodate unforeseen delays.

Project Phases and Durations

The project will be executed in four key phases:

1. **Planning and Design:** 2 weeks
2. **Frontend Development:** 6 weeks
3. **Backend Development:** 6 weeks
4. **Testing and Deployment:** 2 weeks

Key Milestones and Deliverables

Milestone	Deliverable	Completion Date (Estimated)
End of Planning Phase	Design Mockups	2025-08-26
End of Frontend Phase	Frontend Prototype	2025-10-07
End of Backend Phase	Backend API	2025-11-18
End of Project	Final Product (Go-Live)	2025-12-02

The design mockups will be delivered by the end of week 2. The frontend prototype will be completed by the end of week 8. The backend API will be ready for review at the end of week 14. We expect the final product to be ready for deployment by the end of week 16.



Budget & Pricing

The following outlines the budget for the SvelteKit ecommerce platform development. It covers design, development, testing, deployment, and project management. Post-launch support is also included.

Development Costs

We propose a fixed-price model for the initial development phase. This provides cost certainty and aligns our incentives with delivering a successful project on time and within budget.

Item	Price (USD)
Design	\$5,000
Frontend Development	\$15,000
Backend Development	\$15,000
Testing and Deployment	\$5,000
Project Management	\$5,000
Total	\$45,000

Post-Launch Support

This proposal includes three months of post-launch support. This covers bug fixes, minor enhancements, and platform monitoring. After the initial three-month period, support will be billed at an hourly rate. We will discuss and agree upon this rate before the project commences.

Team & Expertise

Docupal Demo, LLC brings together a skilled team to deliver a powerful ecommerce platform for ACME-1. Our team's experience with SvelteKit and ecommerce development ensures a successful project.



Our Team

We've assembled a core team with extensive experience in web development and ecommerce solutions.

- **John Doe, Project Manager:** John will oversee the project, ensuring timely delivery and clear communication. He has over 5 years of experience managing web development projects.
- **Jane Smith, Frontend Developer:** Jane will lead the frontend development. She has over 5 years of experience creating user-friendly interfaces using modern JavaScript frameworks, including SvelteKit.
- **Peter Jones, Backend Developer:** Peter will handle the backend development. He has over 5 years of experience building robust and scalable server-side applications.

Relevant Experience

Our team has a proven track record of developing successful SvelteKit applications. We also possess specific experience building ecommerce platforms. This includes experience with:

- Developing multiple SvelteKit applications.
- Building and deploying complete ecommerce solutions.
- Integrating payment gateways and shipping providers.
- Optimizing websites for speed and SEO.

Partner

This project will be executed solely by our in-house team at Docupal Demo, LLC. We will not involve external partners or consultants.

Portfolio & Case Studies

We bring substantial experience in developing and deploying successful ecommerce solutions. Our portfolio demonstrates our capability to deliver high-performance, scalable, and innovative platforms.



Fashion Ecommerce Platform

We recently delivered a complete ecommerce platform for a client in the fashion industry. This project highlights our ability to build robust and visually appealing online stores using SvelteKit. The platform includes features such as:

- Product catalog management
- Shopping cart and checkout functionality
- User account management
- Order tracking
- Integrated payment gateway

This platform is designed for high performance and scalability to accommodate growing traffic and sales volume.

AI-Powered Product Recommendations

We integrated AI-powered product recommendations into another ecommerce project. This solution uses machine learning algorithms to analyze customer behavior and suggest relevant products. The result was a 20% increase in sales for the client. This demonstrates our ability to leverage AI to enhance the customer experience and drive revenue growth.

Additional Information

Detailed client testimonials and specific performance metrics are available upon request. We are confident that our experience and expertise make us the ideal partner for your SvelteKit ecommerce development project.

Conclusion & Next Steps

Project Benefits

SvelteKit offers notable advantages for your ecommerce platform. It delivers exceptional performance, scalability, and a cutting-edge development environment. These features combined will provide your customers with a fast and reliable shopping experience.



Next Steps

Follow-Up Meeting

We encourage you to schedule a follow-up meeting. This meeting will allow us to address any questions or concerns you may have. We can discuss the proposal in more detail and tailor our approach to meet your specific needs.

Project Initiation

To formally begin the project, please sign the attached agreement. We also require a 25% deposit to initiate the development process. Once we receive these items, our team will begin the project kickoff phase.

